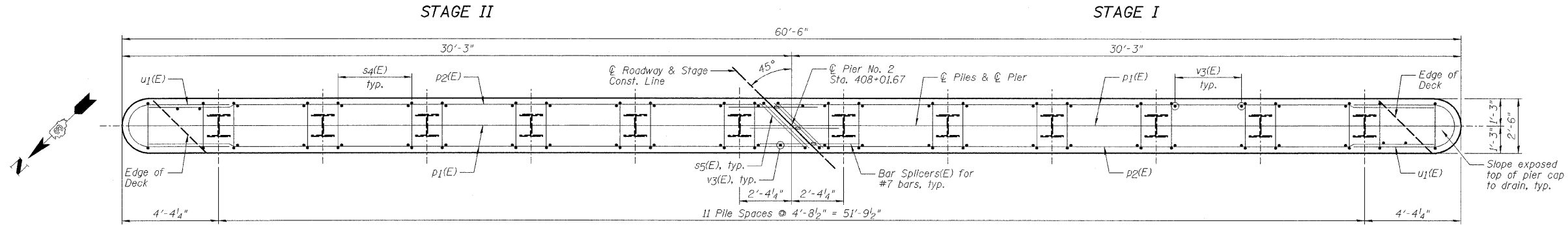


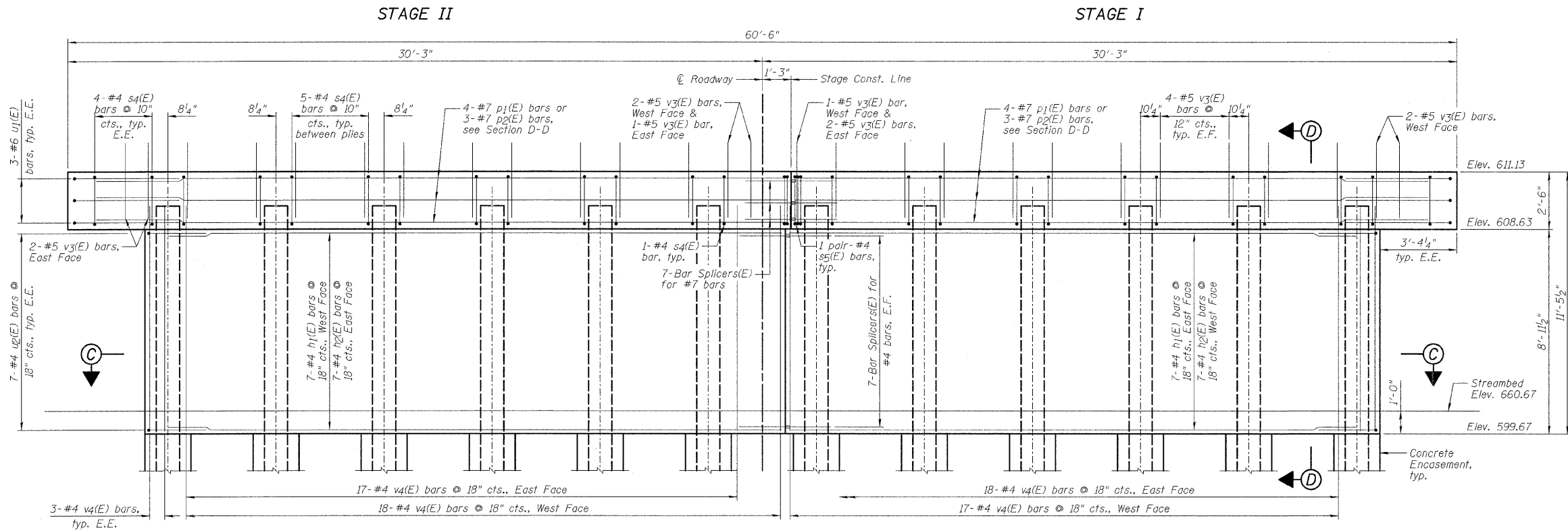
STATE OF ILLINOIS
DEPARTMENT OF TRANSPORTATION

PIER NO. 2
BILL OF MATERIAL

Bar	No.	Size	Length	Shape
h1(E)	14	#4	26'-7"	—
h2(E)	14	#4	24'-11"	—
p1(E)	8	#7	29'-9"	—
p2(E)	6	#7	27'-11"	—
s4(E)	60	#4	9'-5"	□
s5(E)	4	#4	7'-10"	□
u1(E)	6	#6	10'-7"	C
u2(E)	14	#4	6'-0"	C
v3(E)	90	#5	3'-3"	—
v4(E)	76	#4	9'-10"	—
Item	Unit	Quantity		
Structure Excavation	Cu. Yd.	42		
Concrete Structures	Cu. Yd.	49.3		
Concrete Encasement	Cu. Yd.	4.2		
Reinforcement Bars, Epoxy Coated	Pound	2,660		
Furnishing Steel Piles HP12x6.3	Foot	492		
Driving Piles	Foot	492		
Bar Splicers	Each	21		



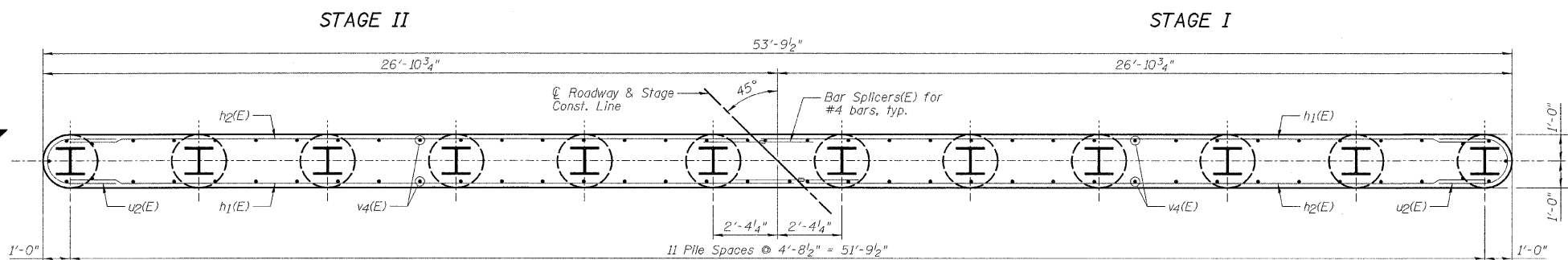
TOP PLAN



ELEVATION
(Looking East)

PILE DATA:

Type	HP12x6.3 Steel
No. Req'd.	12
Est. Length	41 feet
Nominal Required Bearing	256 kips
Allowable Resistance Available	124 kips



SECTION C-C

NOTES:

- 1.) If a portion of the pier wall or concrete encasement is under water, reinforcement may be placed under water into forms. Concrete shall be tremied according to Article 503.08 of the Standard Specifications to an elevation 1'-0" above the water line at the time of construction.
- 2.) E.F. denotes Each Face and E.E. denotes Each End.
- 3.) See Sheet B18 for Section D-D.
- 4.) See Sheet B20 for Bar Splicer Details.

DESIGNED	SDH
CHECKED	JML
DRAWN	JWK/DJM
CHECKED	MSW

DATE 10/07/09

FARNSWORTH GROUP, INC.

PIER NO. 2
STRUCTURE NO. 053-0185

SHEET NO. B17	F.A.P. RTE.	SECTION	COUNTY	TOTAL SHEETS	SHEET NO.
22 SHEETS	41	(15BR-3)-1	LIVINGSTON	45	28
		SN 053-0185	CONTRACT NO. 66833		
FED. ROAD DIST. NO.		ILLINOIS	FED. AID PROJECT		