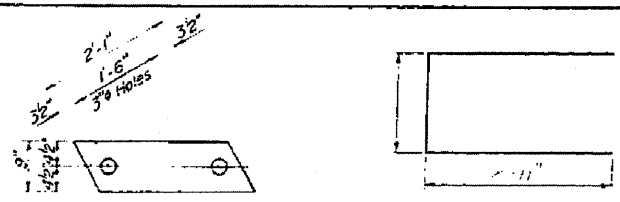


STATE OF ILLINOIS  
DEPARTMENT OF TRANSPORTATION

PROJECT NO.	SECTION	COUNTY	SHEET NO.	SHEET NO.
44	15BR-3	LIVINGSTON	59	39

SHEET NO. 3  
3 SHEETS

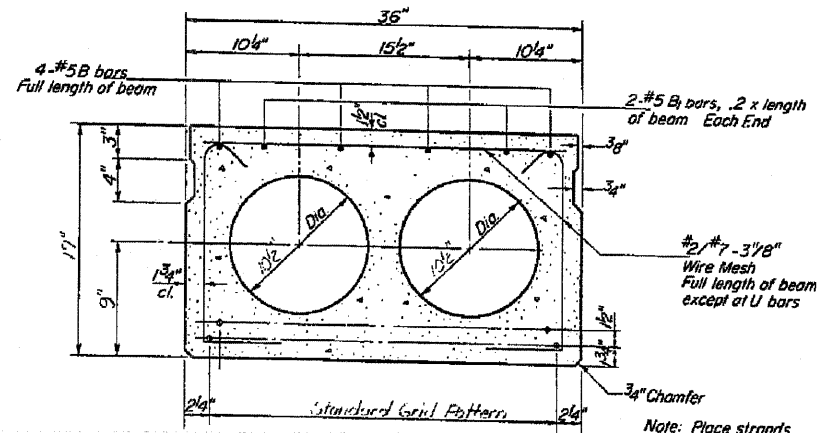
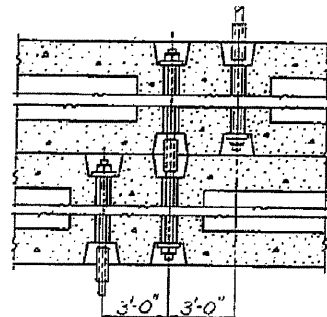


FABRIC BEARING PAD

U1 BAR



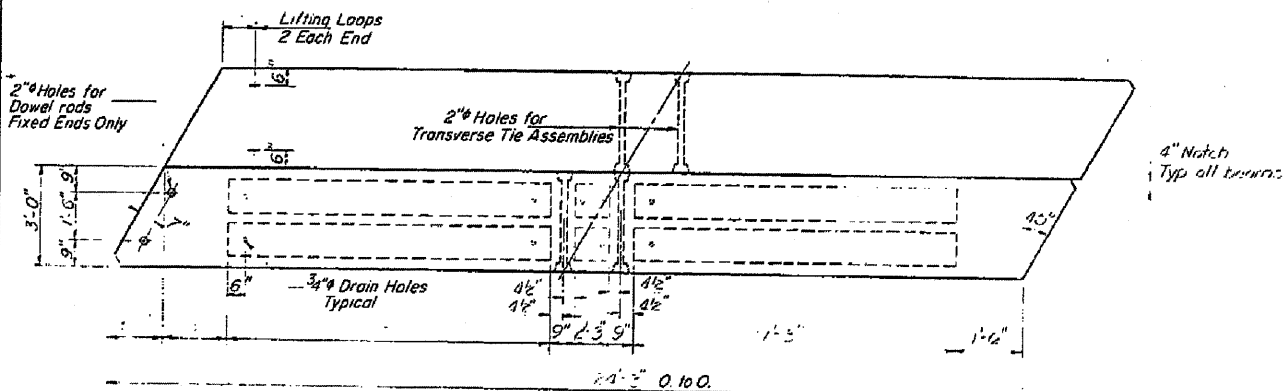
FABRIC SHIM PAD



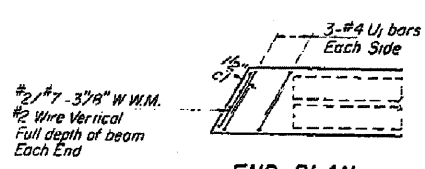
TYPICAL SECTION

4 - 1/2 inch Strands, Each Strand Stressed to 28,900 lbs.  
4 - Strands 1 3/4 inch up,

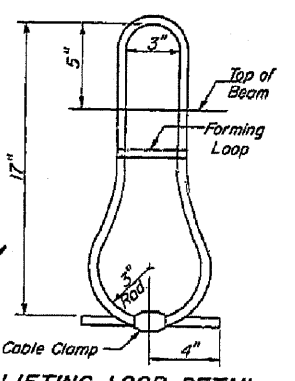
Note: Place strands symmetrically about center of beam



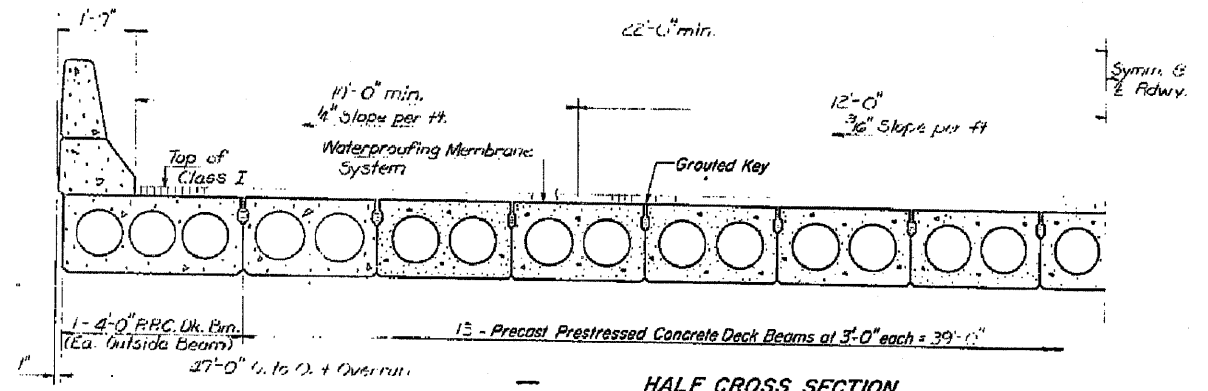
PLAN



END PLAN



LIFTING LOOP DETAIL



HALF CROSS SECTION

NOTES

Prestressing steel shall be non-galvanized high strength, stress-relieved 7-wire strand, Grade 270. The nominal diameter shall be 1/2 inch and the nominal cross-sectional area shall be 0.153 sq. in. Lifting loops shall be 1/2 inch diameter, 6 x 25 class wire rope with fiber core and shall have a minimum ultimate tensile strength of 21,000 lbs. The 1/2 inch rods in the transverse tie assembly shall be tightened to a snug fit and the threads set. Pockets that receive transverse tie bar on outside shall be filled with grout after transverse tie assembly is in place. Longitudinal shear keys shall be packed with a very dry mix of 2-1 sand and P.C. mortar. After beams have been erected, holes for the dowel anchors shall be drilled into the sub-structure and the anchor dowels shall be grouted in place.

Cost of reinforcement and accessories cast into the beam, of bearing pads, of armor angles, and of grouting longitudinal shear keys is included in unit price bid for "Precast Prestressed Concrete Deck Beams."

BILL OF MATERIAL

Bar	No.	Size	Length	Shape
Precast Prestressed Concrete Deck Beams (17")		Sq. Ft.	1833	

DESIGNED	EXAMINED
CHECKED	PASSED
DRAWN	APPROVED
CHECKED	

Sept 22 1918  
C. E. Thompson  
DIRECTOR OF HIGHWAY

PD-1-L 7-15-75

FILE NAME =	USER NAME = duncanbd	DESIGNED -	REVISED -
ca:\pwwork\p1\dot\duncanbd\dms32420\d36833-sht-details.dgn		DRAWN -	REVISED -
		CHECKED -	REVISED -
		DATE -	REVISED -

STATE OF ILLINOIS  
DEPARTMENT OF TRANSPORTATION

FOR INFORMATION ONLY

SCALE: SHEET NO. OF SHEETS STA. TO STA.

F.A.P. RTE.	SECTION	COUNTY	TOTAL SHEETS	SHEET NO.
41	(15BR-3)-1	LIVINGSTON	45	36
			CONTRACT NO. 66833	

ILLINOIS FED. AID PROJECT

SUPERSTRUCTURE  
F.A. RT. 41 SEC. 15BR-3  
LIVINGSTON COUNTY  
STATION 407+84.00