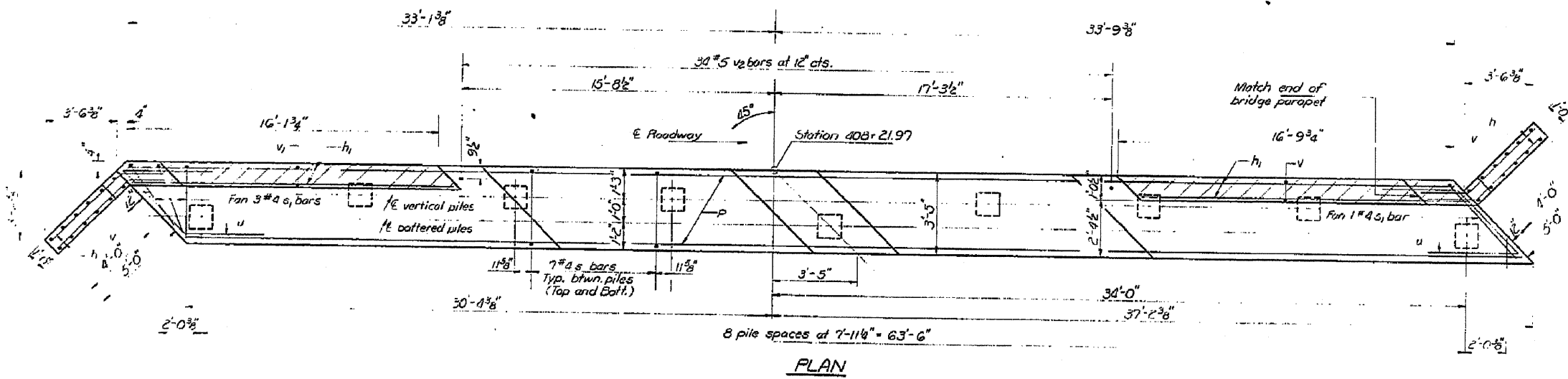
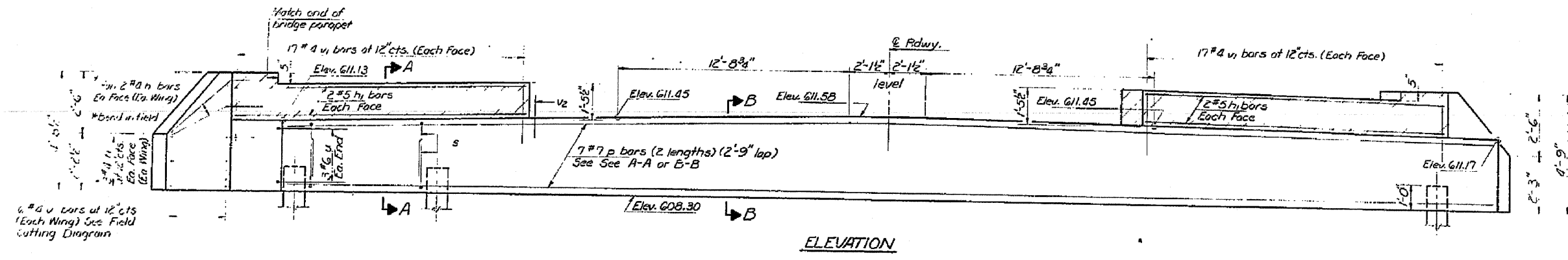
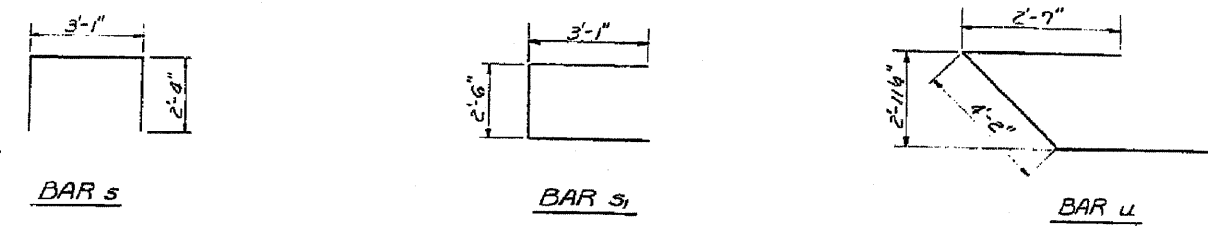


STATE OF ILLINOIS  
DEPARTMENT OF TRANSPORTATION

ROUTE NO.	SECTION	COUNTY	TOTAL SHEETS	SHEET NO.	SHEET NO. 6
41	15BR-3	LIVINGSTON	59	42	8 SHEETS
FED. AID PROJ. NO. 7		ILLINOIS	FED. AID PROJECT		

FIELD CUTTING DIAGRAM

Use 4 bars full length. Cut to fit at ends and use remainder of bars in other face.

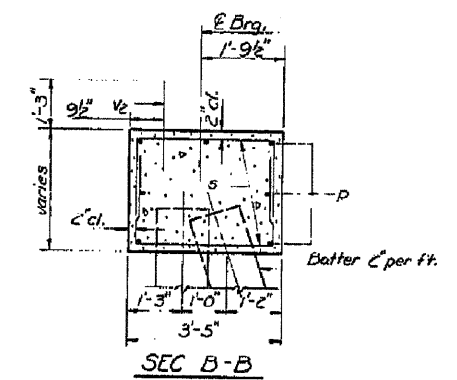
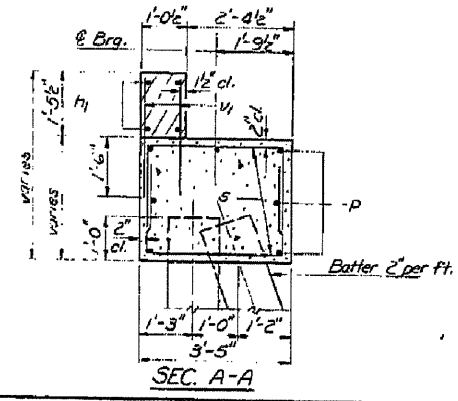


BILL OF MATERIAL

Bar	No	Size	Length	Shape
v	20	#4	7'-6"	—
h	8	#5	15'-10"	—
v	12	#7	35'-0"	—
s	112	#4	7'-9"	□
s	4	#4	8'-8"	□
v	6	#6	9'-4"	—
v	12	#4	6'-6"	—
v <sub>1</sub>	68	#8	2'-10"	—
v <sub>2</sub>	34	#5	2'-6"	—
Class X Concrete			Cu Yd	29.3
Reinforcement Bars			Pound	2190
Concrete Piles			Lin Ft	144

PILE DATA

Type: Concrete  
Capacity: Drive to 25 Ton bearing  
Est. Length: 16'  
No. Required: 9



DESIGNED	EXAMINED	19
CHECKED	PASSED	
DRAWN	APPROVED	
CHECKED		

FILE NAME =	USER NAME = duncanbd	DESIGNED -	REVISED -	STATE OF ILLINOIS DEPARTMENT OF TRANSPORTATION		FOR INFORMATION ONLY		F.A.P. RTE.	SECTION	COUNTY	TOTAL SHEETS	SHEET NO.
6833-sht-details.dgn	6833-sht-details.dgn	DRAWN -	REVISED -					41	(15BR-3)-1	LIVINGSTON	45	38
PLOT SCALE = 50.0000' / IN.		CHECKED -	REVISED -					CONTRACT NO. 66833				
PLOT DATE = Oct 08, 2009 - 02:47:54 PM		DATE -	REVISED -					ILLINOIS FED. AID PROJECT				