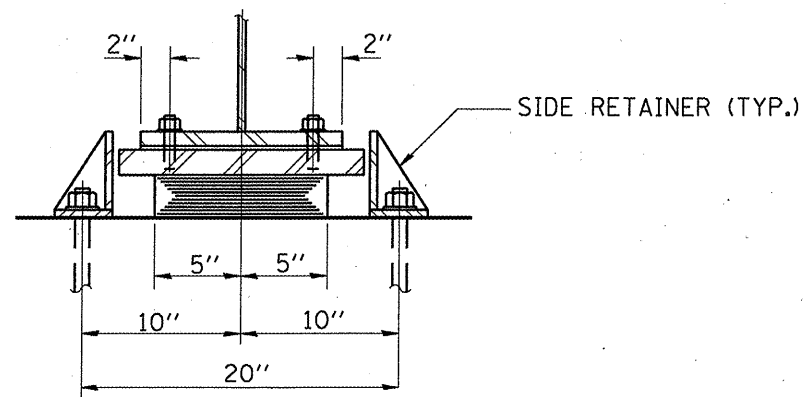
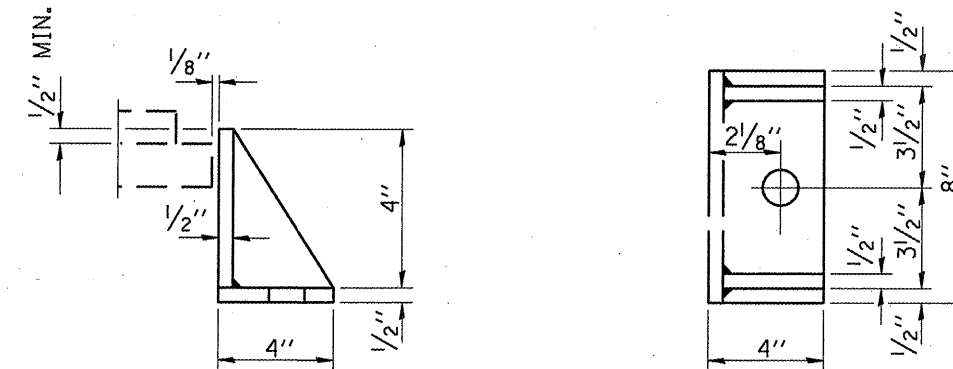


ELEVATION AT ABUT.

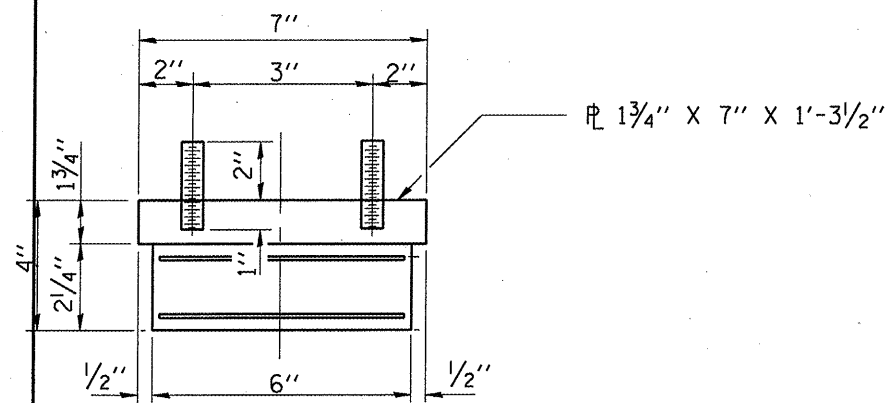


SECTION A-A

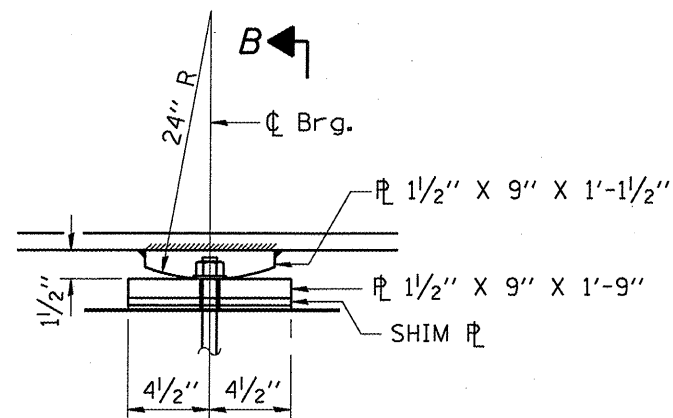
TYPE I ELASTOMERIC EXP. BRG.



SIDE RETAINER
 Equivalent rolled angle with stiffeners will be allowed in lieu of welded plates.

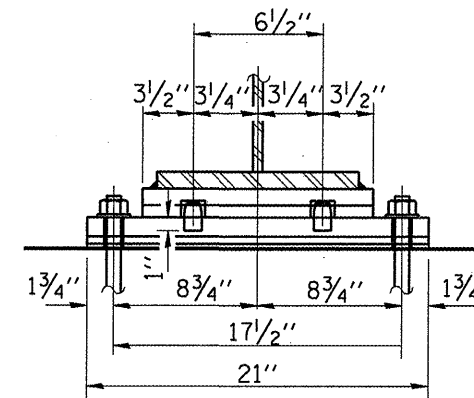


BEARING ASSEMBLY

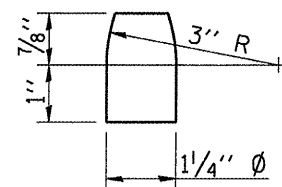


ELEVATION AT PIER

FIXED BEARING



SECTION B-B



PINTLE

THIS SHEET FOR INFORMATION ONLY

FILE NAME =	USER NAME = woodshank-1	DESIGNED - RON WOODSHANK	REVISED -	STATE OF ILLINOIS DEPARTMENT OF TRANSPORTATION	EXISTING STRUCTURE PLANS SN 027-0071	F.A.P. RTE.	SECTION	COUNTY	TOTAL SHEETS	SHEET NO.	
cs:\pw_work\PW100T\WOODSHANKRL\d0138620	0366977-details.dgn	DRAWN - RON WOODSHANK	REVISED -			796	(106BR)BP	FORD	7	6	
	PLOT SCALE = 200.0000' / IN.	CHECKED -	REVISED -			CONTRACT NO. 66977					
	PLOT DATE = Oct 21, 2009 - 10:25:31 AM	DATE -	REVISED -			FED. ROAD DIST. NO. -	ILLINOIS				