

INDEX OF SHEETS

- 1 COVER SHEET
- 2 COMMITMENTS, GENERAL NOTES, ENVIRONMENTAL REVIEWS, STATUS OF UTILITIES
- 3-4 SUMMARY OF QUANTITIES
- 5-6 TYPICAL SECTIONS
- 7-8 SCHEDULES OF QUANTITIES
- 9 ALIGNMENT, TIES AND BENCHMARKS
- 10-11 PLAN & PROFILE SHEETS
- 12-16 STAGES OF CONSTRUCTION
- 17-18 EROSION CONTROL PLAN
- 19 RIGHT-OF-WAY PLAN
- 20-22 EXISTING BRIDGE PLANS
- 23-48 STRUCTURE PLANS
- 49-62 DISTRICT CADD STANDARDS
- 63-76 CROSS SECTIONS STANDARDS

LIST OF STANDARDS

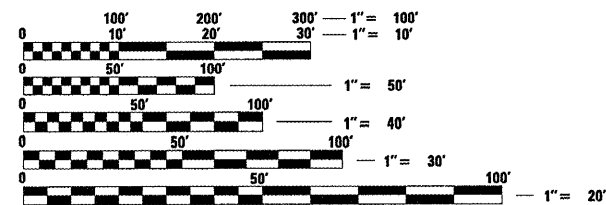
000001-05	635006-03	704001-06
001001-02	635011-02	720001-01
280001-05	701006-03	720006-02
420401-08	701011-02	720011-01
515001-03	701306-02	780001-02
630001-08	701311-03	781001-03
630301-05	701321-10	601101-01
631011-06	701326-03	
631031-08	701901-01	

CADD STANDARDS

205001-D4	406101-D4	440001-D4	630101-D4	780001-D4
280001-D4	406301-D4	631011-D4	667101-D4	

DESIGN DESIGNATION

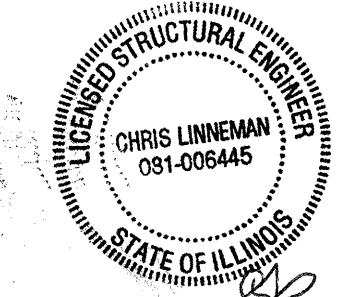
MAJOR COLLECTOR (RURAL)
 ADT = 3100 (2010)
 ADT = 3800 (2030)
 PC = 94.2%
 SU = 3.1%
 MU = 2.7%



FULL SIZE PLANS HAVE BEEN PREPARED USING STANDARD ENGINEERING SCALES. REDUCED SIZED PLANS WILL NOT CONFORM TO STANDARD SCALES. IN MAKING MEASUREMENTS ON REDUCED PLANS, THE ABOVE SCALES MAY BE USED.

J.U.L.I.E.
 JOINT UTILITY LOCATION INFORMATION FOR EXCAVATION
 1-800-892-0123
 OR 811

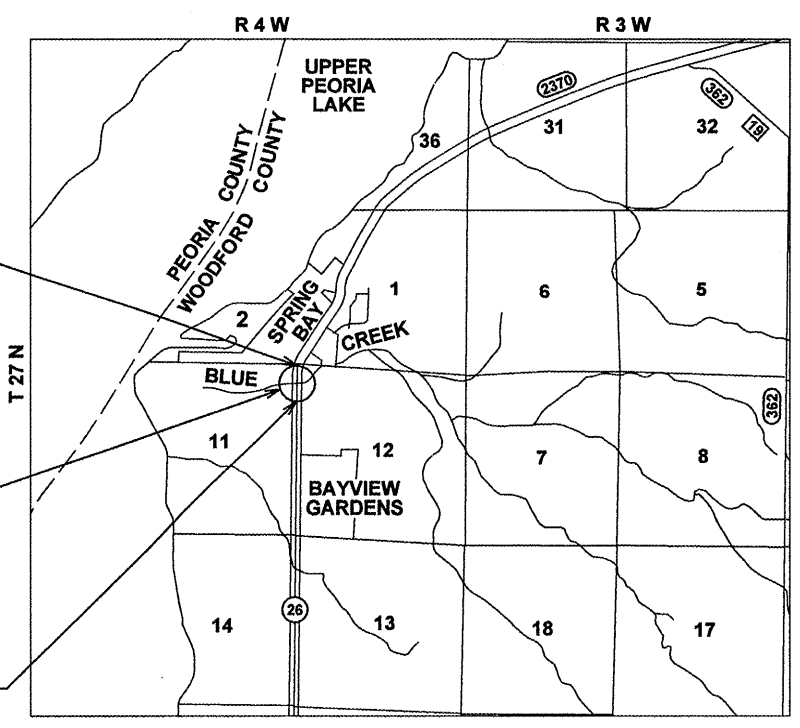
PROJECT ENGINEER: CHRISTOPHER MAUSHARD 309-671-3453
 PROJECT MANAGER: CHRISTOPHER MAUSHARD 309-671-3453
 CATALOG NO. 032681-01D
 CONTRACT NO. 68466



CL 10/8/2009
 EXPIRES 11/30/2010
 SHEETS 23-48

STATE OF ILLINOIS
DEPARTMENT OF TRANSPORTATION
DIVISION OF HIGHWAYS
PROPOSED
HIGHWAY PLANS

FAS ROUTE 2370 (IL 26)
SECTION 29BR-1
PROJECT ACBRS-2370(116)
WOODFORD COUNTY
C-94-054-05



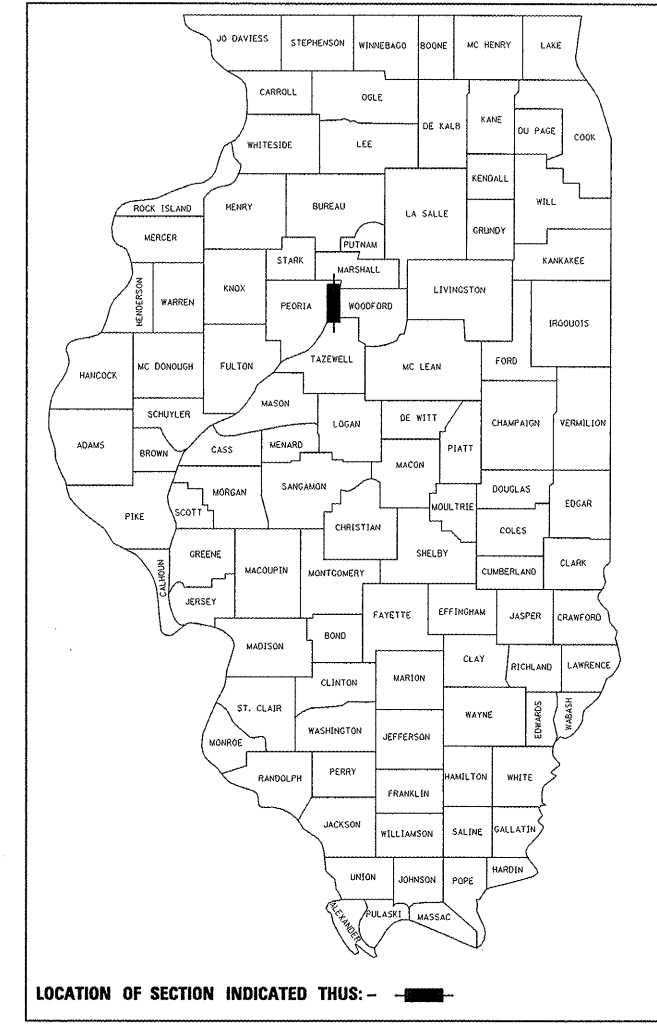
GROSS LENGTH OF PROJECT = 1117.00 FT (0.21 MILES)
 NET LENGTH OF PROJECT = 1117.00 FT (0.21 MILES)



Shelley L. Dintelman
 11/30/09
 EXPIRES 11/30/09

F.A.S. RTE.	SECTION	COUNTY	TOTAL SHEETS	SHEET NO.
2370	29BR-1	WOODFORD	76	1
FED. ROAD DIST. NO.	ILLINOIS	CONTRACT NO.	68466	

D-94-048-05



STATE OF ILLINOIS
 DEPARTMENT OF TRANSPORTATION
 DIVISION OF HIGHWAYS

SUBMITTED 10/14/2009

Charles G. Ingersoll
 DEPUTY DIRECTOR OF HIGHWAYS, REGION ENGINEER

December 4, 2009
Charles G. Ingersoll
 ENGINEER OF DESIGN AND ENVIRONMENT

December 4, 2009
Christine M. Reed
 DIRECTOR OF HIGHWAYS, CHIEF ENGINEER

PRINTED BY THE AUTHORITY
OF THE STATE OF ILLINOIS