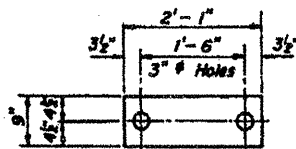
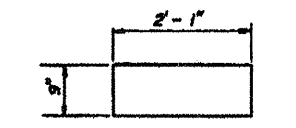


STATE OF ILLINOIS

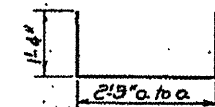
PROJECT NO.	SECTION	CONTRACT	DATE	SHEET NO.	TOTAL SHEETS
168	29BR	WOODFORD	12	6	6



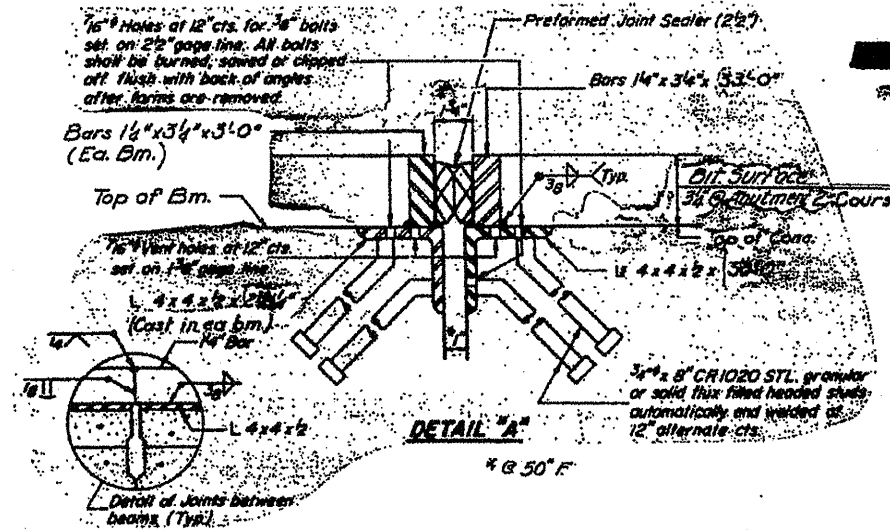
FABRIC BEARING PAD



GRAPHITED ASBESTOS BEARING PAD

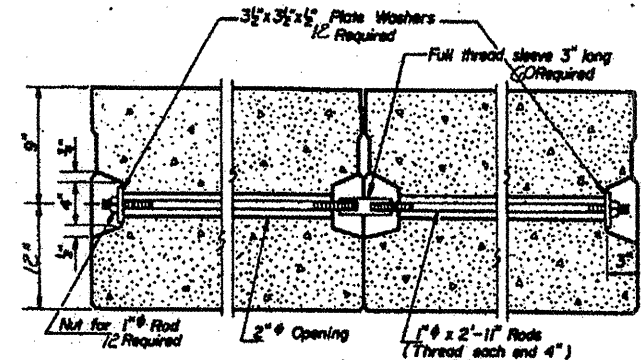


U BAR

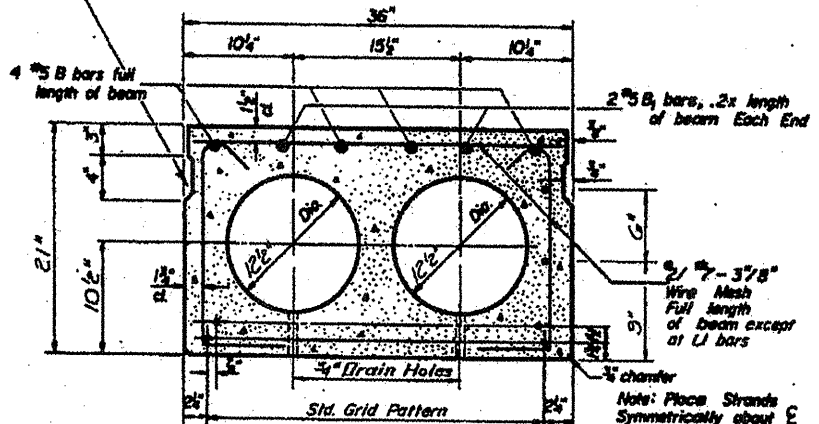


DETAIL 'A'

END DETAIL (at Abut. and)

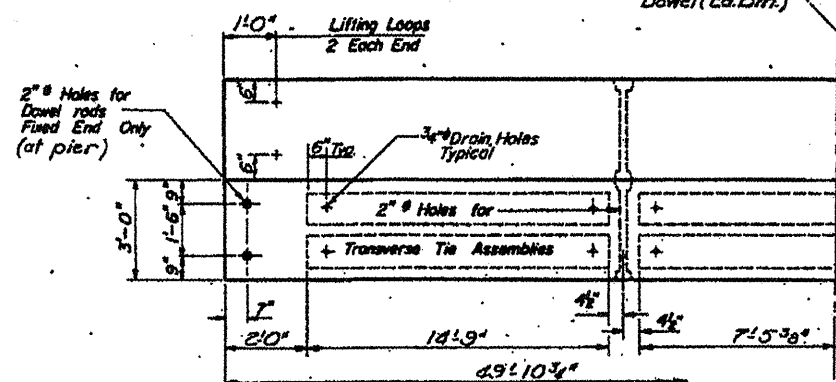


TYPICAL TRANSVERSE TIE ASSEMBLY

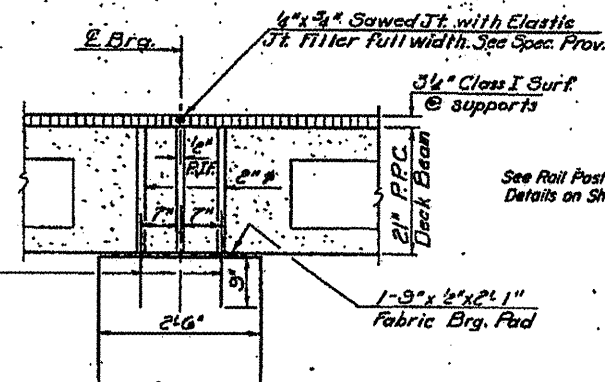


TYPICAL SECTION

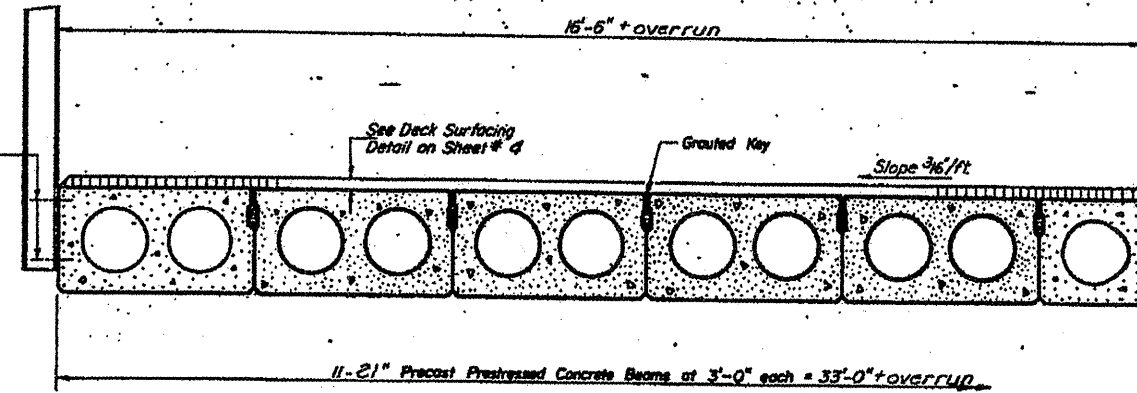
24-1/8" Strands Each Strand Stressed to 18,900 lbs.
16-Strands 1 1/2" up, 4-Strands 3/4" up, 2-Strands 3/8" up, 9-Strands 1/8" up.



PLAN



SECTION THRU PIER

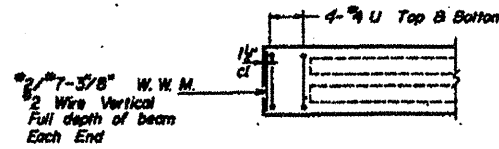


HALF CROSS SECTION

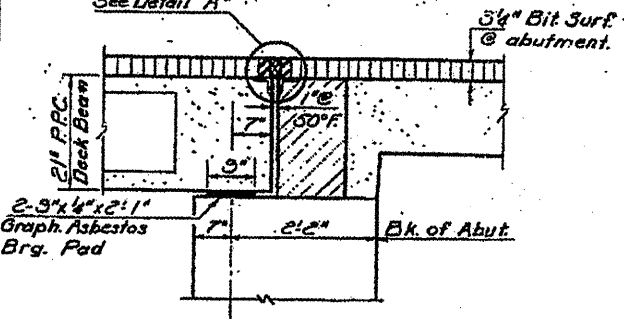
FOR INFORMATIONAL PURPOSES ONLY



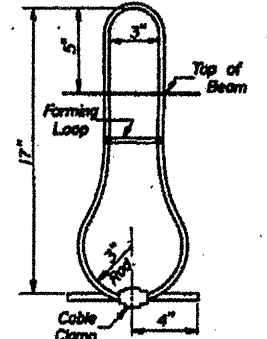
PREFORMED JOINT SEALER (2x2)



END PLAN



SECTION THRU ABUTMENT



LIFTING LOOP DETAIL

GENERAL NOTES

Prestressing steel shall be non-galvanized high strength, stress-relieved 7-wire strand. The nominal diameter shall be 7/8" and the nominal cross-sectional area shall be 0.109 sq. in. Lifting loops shall be 3/4" diameter, 6x19 class wire rope with fiber core and shall have a minimum ultimate tensile strength of 23000 lbs. The 1" rods in the transverse tie assembly shall be tightened to a snug fit and the threads set. Pockets that receive transverse tie bar on outside beam shall be filled with grout after transverse tie assembly is in place. Longitudinal shear keys shall be packed with a very dry mix of 2-1 sand and P.C. mortar. After beams have been erected, holes for the dowel anchors shall be drilled into the sub-structure and the anchor dowels shall be grouted in place. Dowel rods shall be ASTM A-305 or ASTM A-615. Transverse tie rods shall be ASTM A-305, Grade 70-80. After fabrication the transverse tie assemblies (tie rods, nuts, washers and sleeves) shall be hot-dipped galvanized in accordance with A.S.T.M. Designation: A153. Cast of reinforcement and accessories cast into the beam of bearing pads, of armor angles, and of grouting longitudinal shear keys is included in unit price bid for "Precast Prestressed Concrete Deck Beams."

BILL OF MATERIAL

Item	Quantity	Unit	Value
Precast Prestressed Concrete Deck Beams (21')		Sq. Ft.	3293

SUPERSTRUCTURE
F.A. RT. 168, SEC. 29 BR
WOODFORD COUNTY
STA. 262+40

DESIGNED	Sal Felau	EXAMINED	Sept. 15 1971
CHECKED	W. Ham	PASSED	
DRAWN	Fred Coffin	APPROVED	
CHECKED	S.F.		