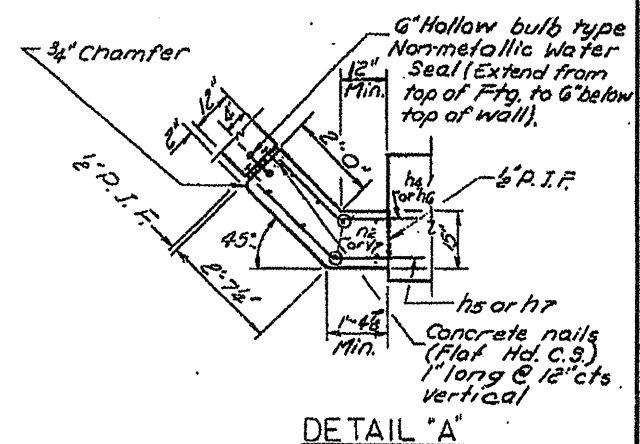
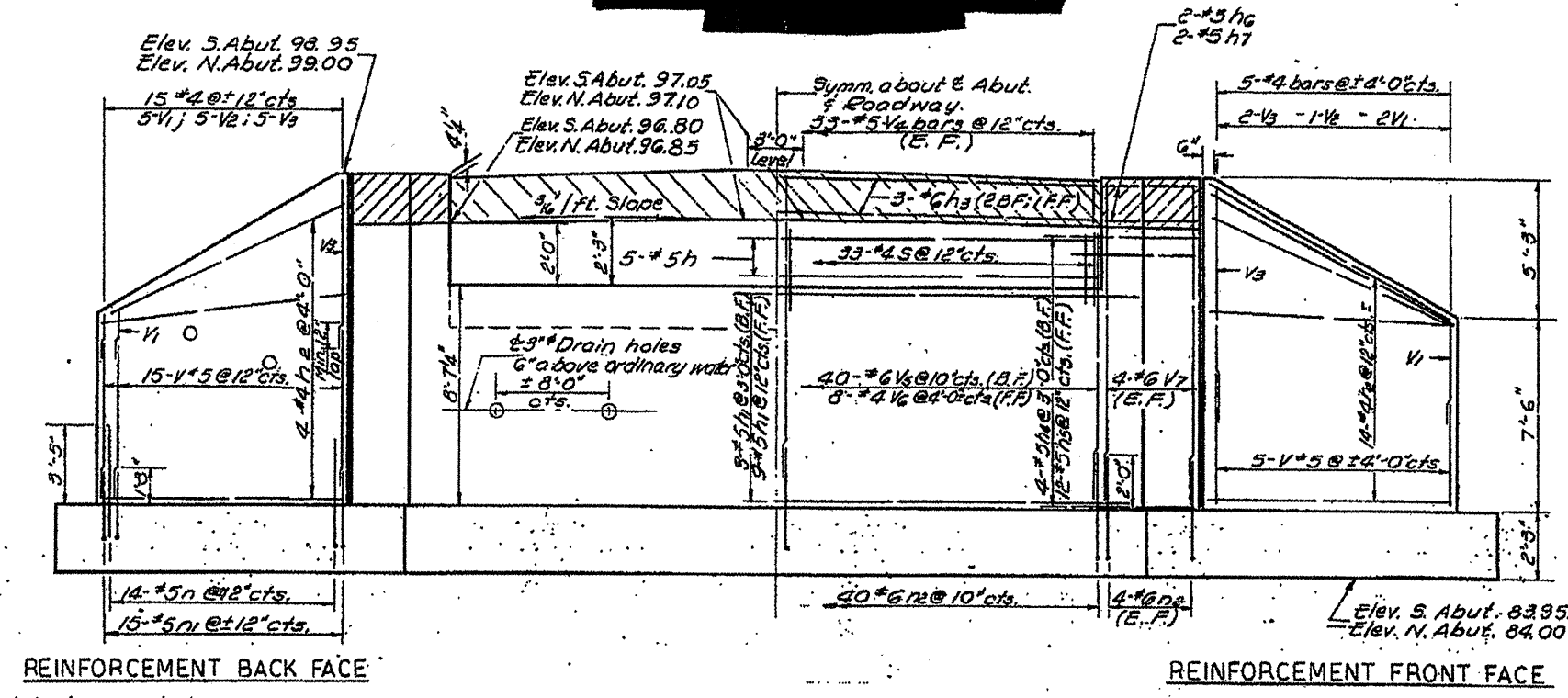
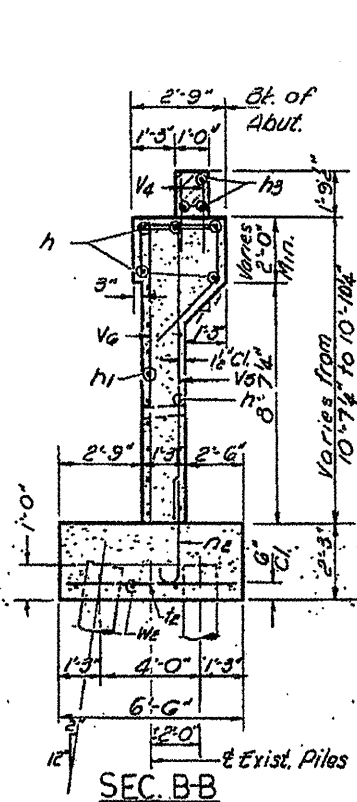


STATE OF ILLINOIS

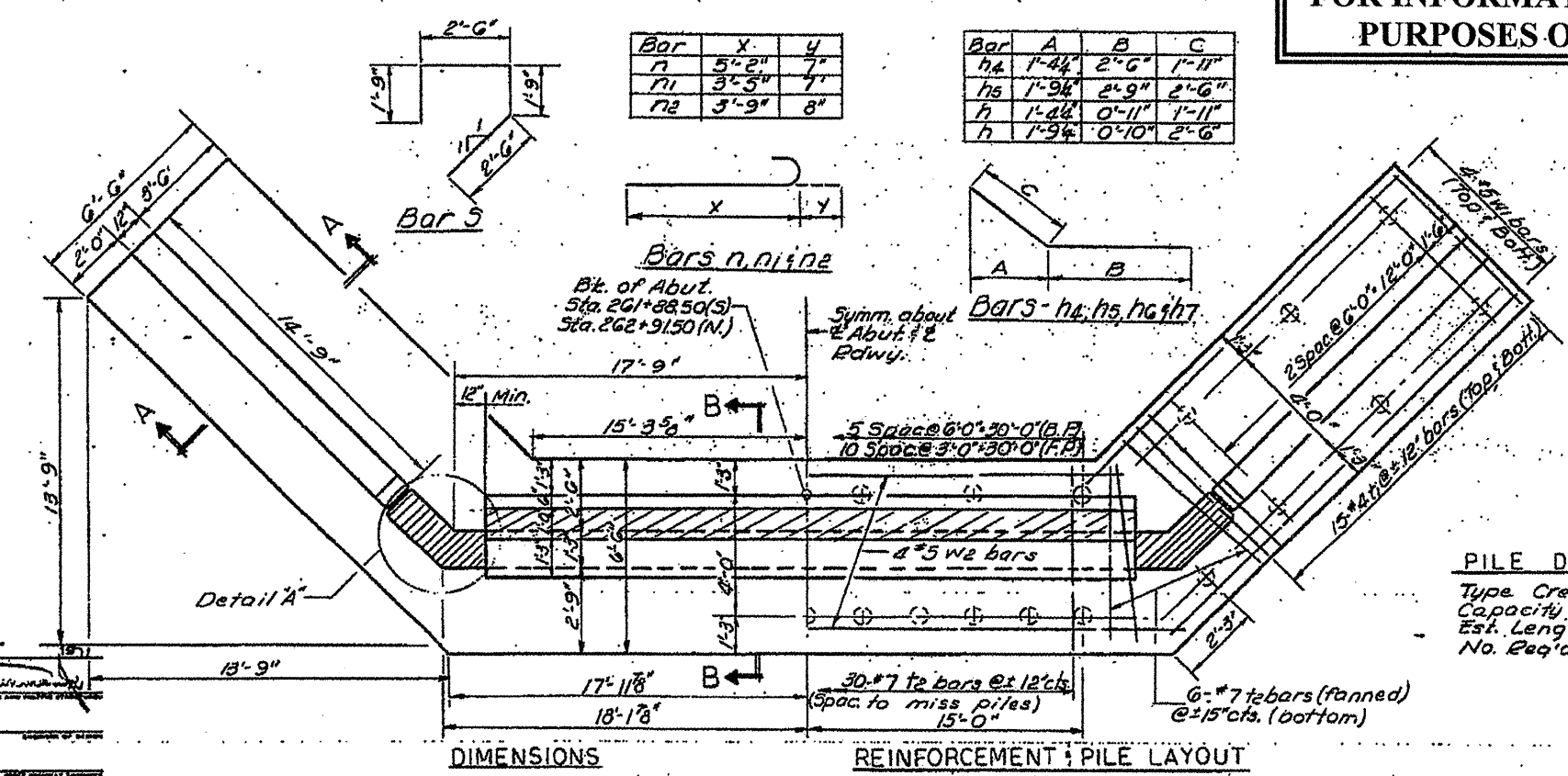
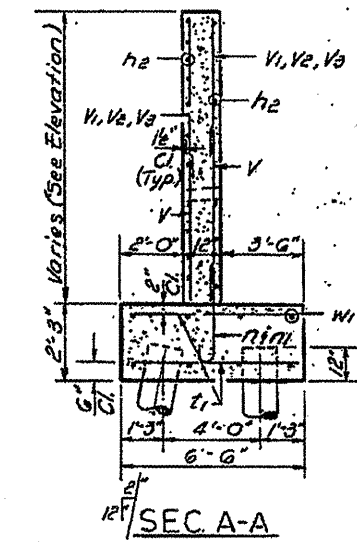
ROUTE NO.	SECTION	POST MILE	TOTAL MILES	SHEET NO.	SHEETS
168	29B	WOODFORD	12	9	6
DESIGNED BY		DRAWN BY		CHECKED BY	
S. F.		S. F.		S. F.	



2 ABUTMENTS
BILL OF MATERIAL

Bar No	Size	Length	Shape
h	#5	33'-3"	—
h1	#5	36'-0"	—
h2	#4	12'-6"	—
h3	#6	33'-3"	—
h4	#5	4'-5"	—
h5	#5	5'-3"	—
h6	#5	2'-10"	—
h7	#5	3'-4"	—
n	#5	5'-9"	—
n1	#5	4'-0"	—
n2	#6	4'-5"	—
s	#5	8'-6"	—
t1	#4	6'-3"	—
t2	#7	6'-3"	—
v	#5	4'-6"	—
v1	#4	6'-0"	—
v2	#4	7'-9"	—
v3	#4	9'-6"	—
v4	#5	3'-0"	—
v5	#6	10'-6"	—
v6	#4	10'-6"	—
v7	#6	12'-0"	—
w1	#5	13'-0"	—
w2	#5	35'-6"	—
Class X Concrete		Cu. Yds.	1538
Reinforcement Bars		Lbs.	10230
Crested Piles		Ln. Ft.	1364

FOR INFORMATIONAL PURPOSES ONLY



PILE DATA
Type Crested
Capacity 20 Tons
Est. Length 22
No. Req'd 62

DESIGNED Sal Fatani
CHECKED W. Heising
DRAWN F. Mercado
CHECKED S.F.

EXAMINED [Signature]
PASSED
APPROVED

ABUTMENTS
F.A. RT. 168 SEC. 29 B.R.
WOODFORD COUNTY
STA. 262+40.00