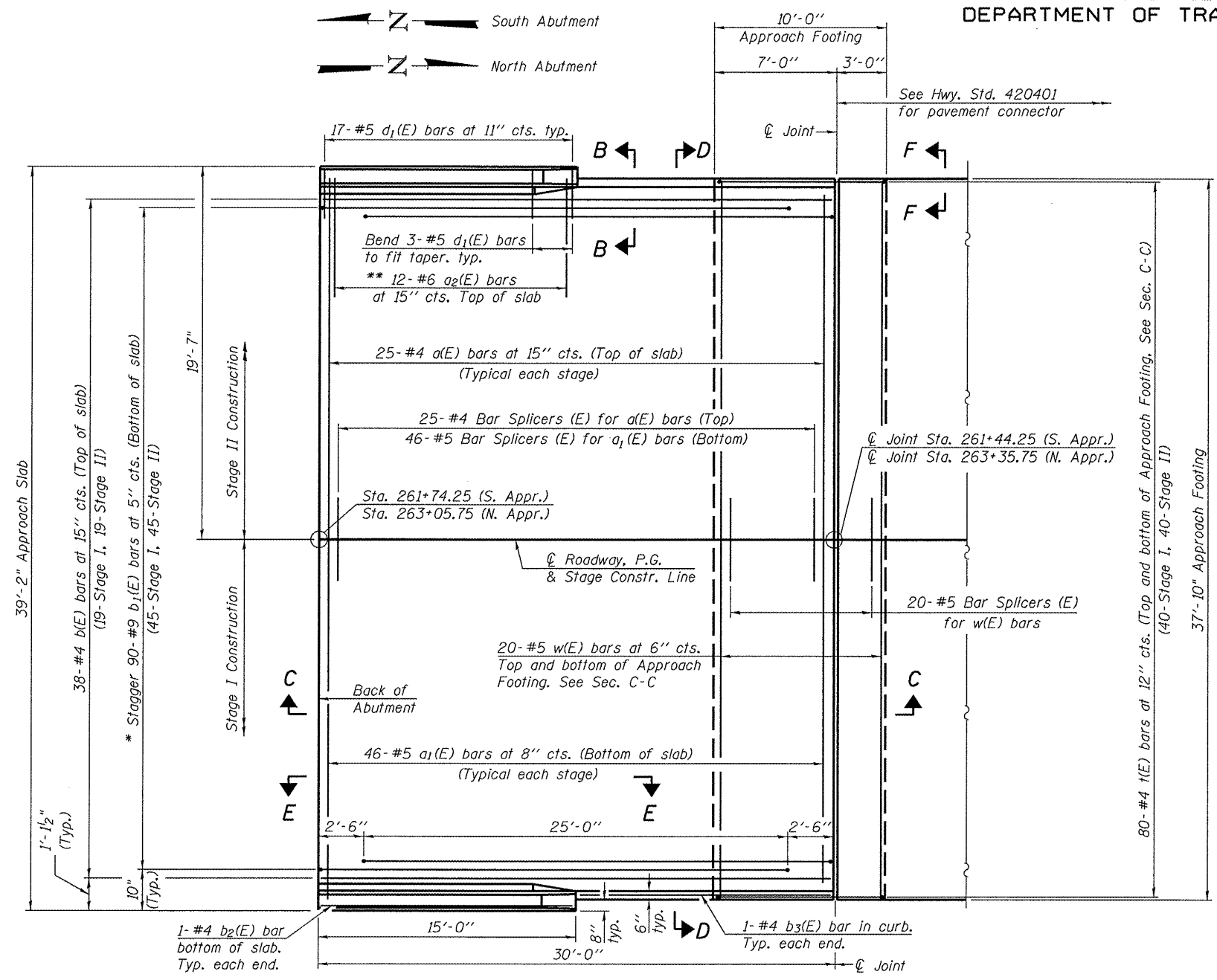


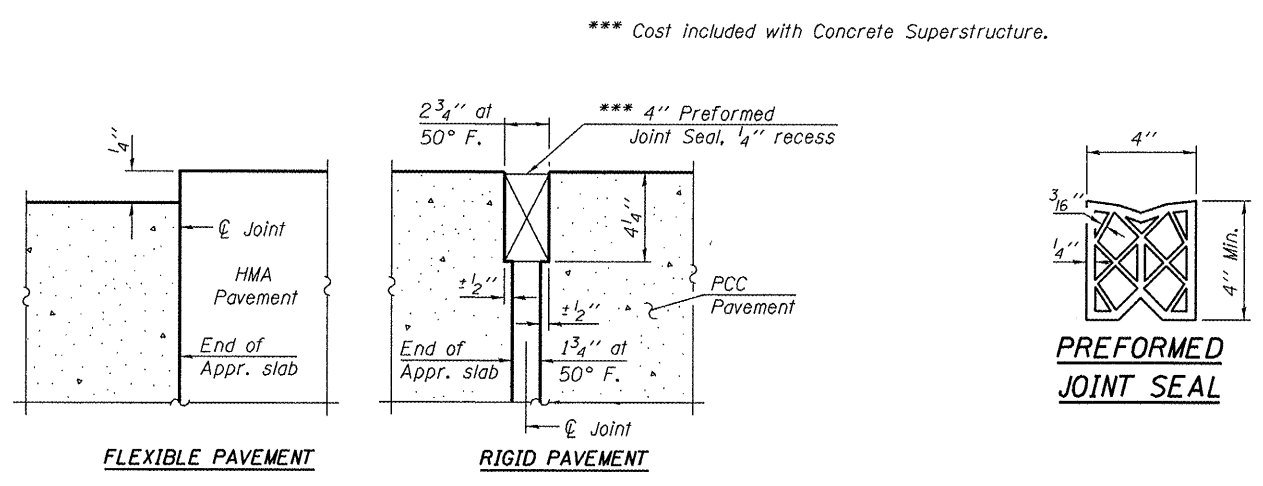
STATE OF ILLINOIS  
DEPARTMENT OF TRANSPORTATION

Notes:  
See sheet 13 of 25 for Sections C-C & D-D and View E-E.  
a(E), a<sub>1</sub>(E), and w(E) bar spacings measured parallel to  $\bar{C}$  Rdwy.

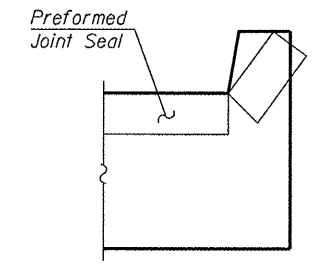


PLAN

\* Tilt #9 b<sub>1</sub>(E) bars as required to maintain clearance.  
\*\* Alternate with a(E) bars, typ. ea. parapet.

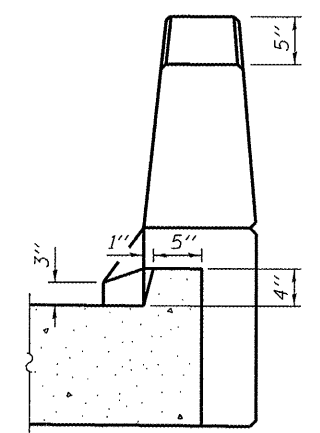


DETAIL A



VIEW F-F

Angle Preformed Joint Seal at 45° at curbs when req'd for drainage.



VIEW B-B

(Exit ends only)

DESIGNED	CTW
CHECKED	CDL
DRAWN	DP
CHECKED	CTW/CDL

BA-0 10-31-08

BRIDGE APPROACH SLAB DETAILS (1 OF 2)  
STRUCTURE NO. 102-0068

SHEET NO. 12  26 SHEETS	<b>EFK Moen, LLC</b> Civil Engineering Design		331 Salem Place Suite 225 Fairview Heights, IL 62208		Phone 618-206-4250 Fax 618-206-4253	
	F.A.S. RTE.	SECTION	COUNTY	TOTAL SHEETS	SHEET NO.	
	2370	29BR-1	WOODFORD	76	34	
FED. ROAD DIST. NO.			ILLINOIS FED. AID PROJECT		CONTRACT NO. 68466	