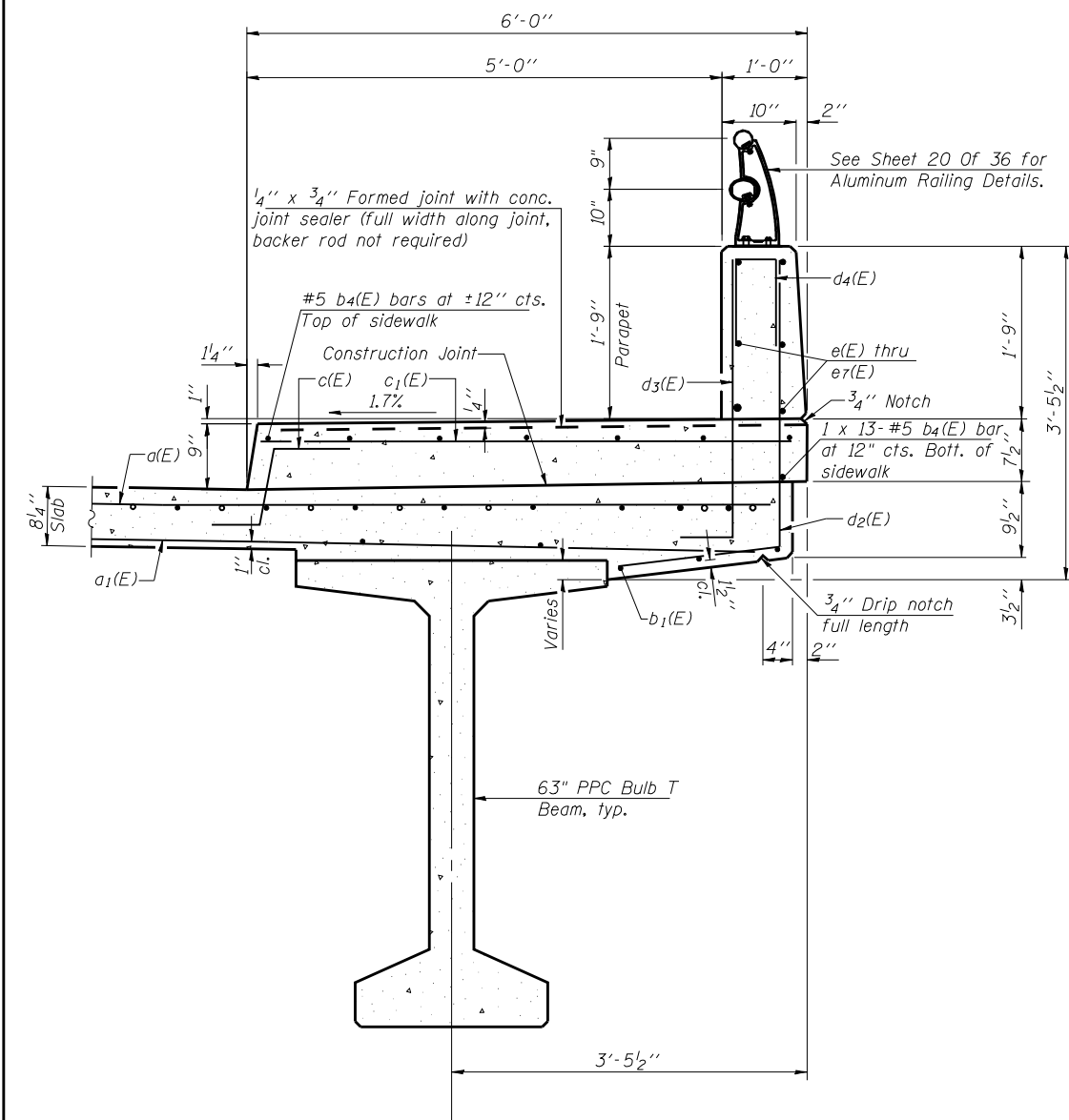
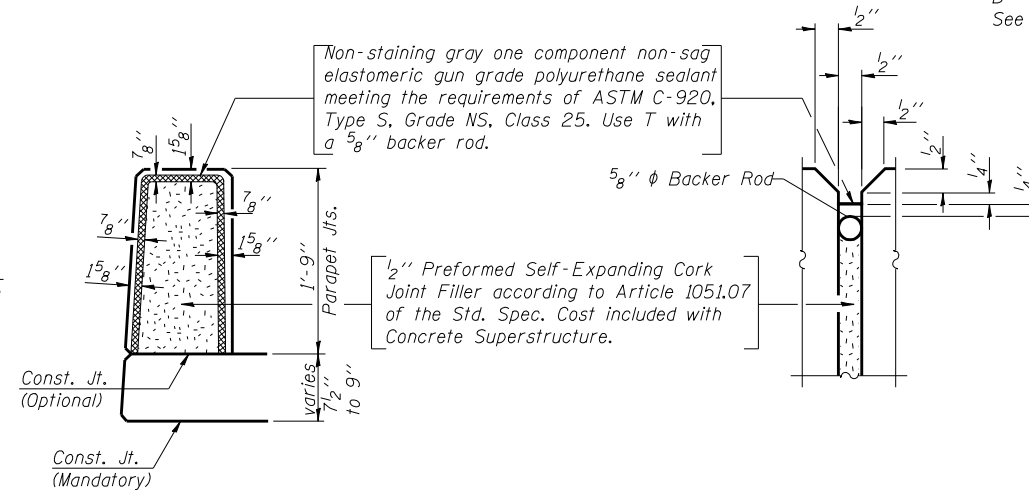


**OUTSIDE ELEVATION OF E. PARAPET**

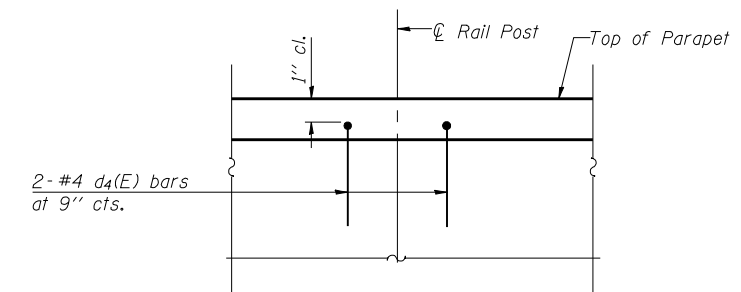
- A = 6-#4 e1(E) bars (span 1)
- B = 6-#4 e3(E) bars (span 2)
- C = 6-#4 e5(E) bars (span 3)
- D = 6-#4 e7(E) bars (span 4)
- See Section Thru E. Parapet



**SECTION THRU E. PARAPET**



**E. PARAPET JOINT DETAILS**



**DETAIL "A"**

Typical at Rail Post locations

**MINIMUM BAR LAP**

- (Parapet)
- #4 bar = 1'-4"
- #8 bar = 3'-5"

PLOT DATE = 9/24/2009  
 FILE NAME = s:\bent-14-super-details-b.dgn  
 FILE SIZE = 1058194 4 / 1K  
 USER NAME = JML

**SUPERSTRUCTURE DETAILS**  
**STRUCTURE NO. 010-0287**

**CB** Coombe-Bloxdorf P.C.  
 - CIVIL ENGINEERS -  
 - STRUCTURAL ENGINEERS -  
 - LAND SURVEYORS -  
 Design Firm License No. 184-002703

PROJECT NO.	06027-3
SCALE	
DATE	9/24/09
DESIGN BY	
DRAWN BY	TFG
CHECKED BY	MCB

SHEET NO. 14  
36 SHEETS

F.A.P. RTE.	SECTION	COUNTY	TOTAL SHEETS	SHEET NO.
326	(137BR)BR	CHAMPAIGN	75	34
SN 010-0287		CONTRACT NO. 70428		
FED. ROAD DIST. NO. 7 ILLINOIS FED. AID PROJECT				