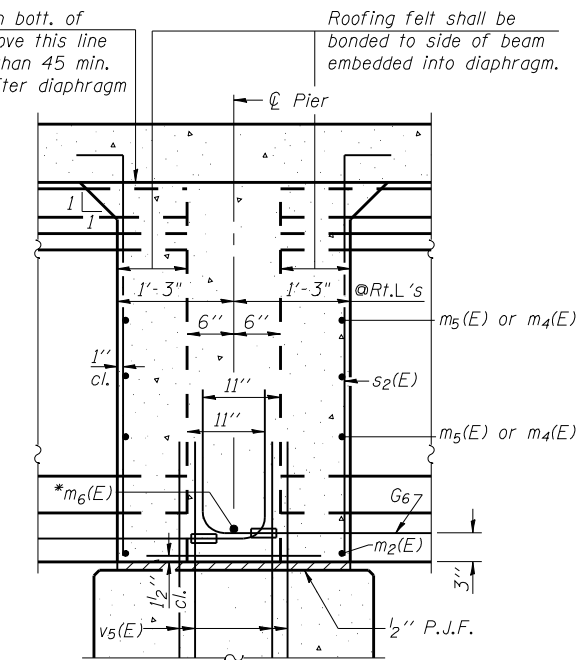


SECTION A-A

Dimensions at right angles to abutment, except as shown.

Beam ends shall be set on an initial 1/2" min. grout (2:1 sand and portland cement, very dry mix) to provide full bearing. Any excess grout squeezed out from under the beam shall be removed. Cost included with Concrete Structures.

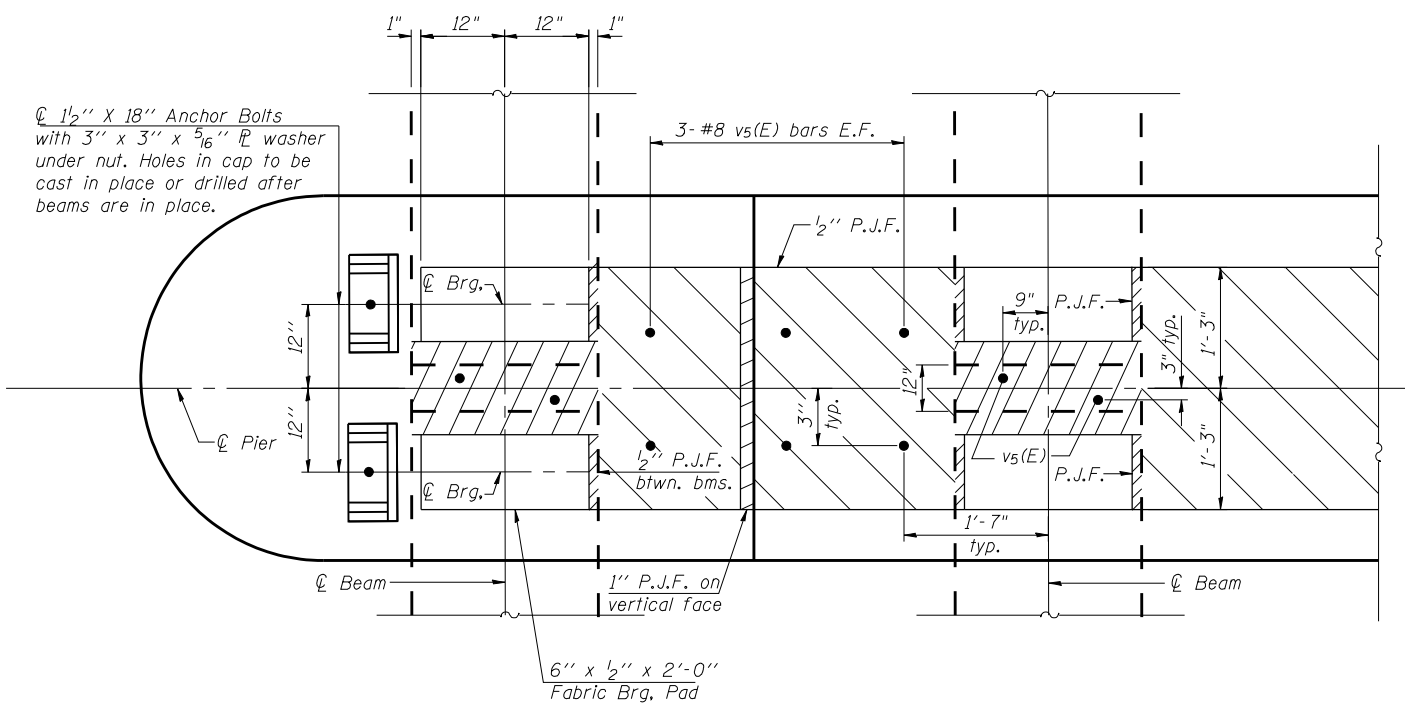
Pour diaphragm flush with bott. of slab. Concrete in slab above this line shall be placed not less than 45 min. nor more than 90 min. after diaphragm has been poured.



SECTION B-B

Dimensions along centerline of beam, except as shown.

*Tightly fasten the #8 bars together with No. 9 wire ties.



PLAN AT PIER

(Showing bearing pad and P.J.F. details)

**DIAPHRAGM DETAILS
STRUCTURE NO. 010-0287**

PLOT DATE = 9/24/2009
 FILE NAME = c:\pbr\eggsent\15-pbt-2DDI.dgn
 FILE SIZE = 10508194 / IN.
 USER NAME = JML

PBT-2DDI

10-1-08

CB Coombe-Bloxdorf P.C.
 - CIVIL ENGINEERS -
 - STRUCTURAL ENGINEERS -
 - LAND SURVEYORS -
 Design Firm License No. 184-002703

PROJECT NO.	06027-3
SCALE	
DATE	9/23/09
DESIGN BY	
DRAWN BY	TFG
CHECKED BY	MCB

SHEET NO. 15	F.A.P. RTE.	SECTION	COUNTY	TOTAL SHEETS	SHEET NO.
	326	(137BR)BR	CHAMPAIGN	75	35
36 SHEETS	SN 010-0287		CONTRACT NO. 70428		
FED. ROAD DIST. NO. 7 ILLINOIS FED. AID PROJECT					