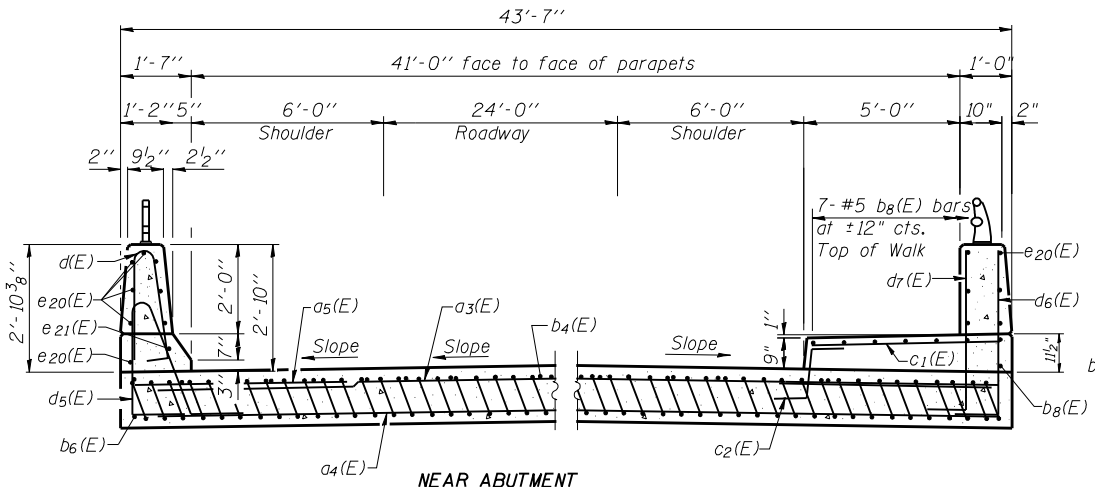


SECTION E-E

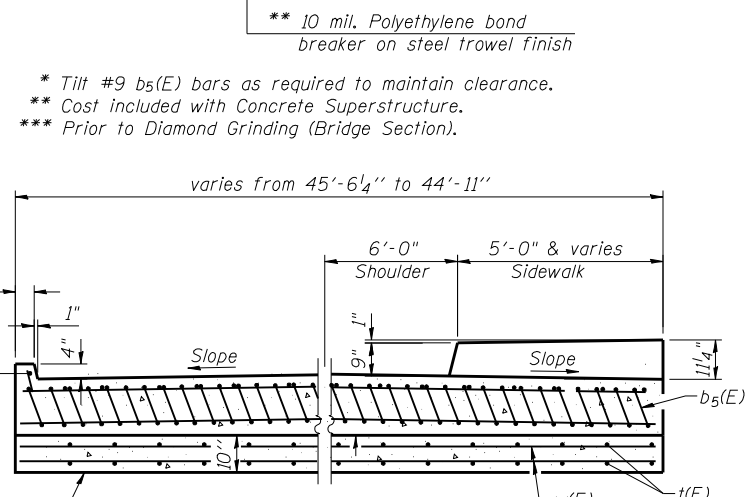
Notes:
 See sheet 17 of 36 for Detail A.
 Approach slab and parapet concrete shall be paid for as Concrete Superstructure.
 Approach footing concrete shall be paid for as Concrete Structures.
 Reinforcement shall be paid for as Reinforcement Bars, Epoxy Coated.
 For v(E) bar details, see sheet 13 of 36.
 The approach footing maximum applied service bearing pressure (Qmax) = 2.0 ksf.
 For bar splicer details, see sheet 33 of 36.
 Cost of excavation for approach footing included with Concrete Structures.
 For Porous Granular Embankment (Special) and drainage treatment details, see sheet 2 of 36.



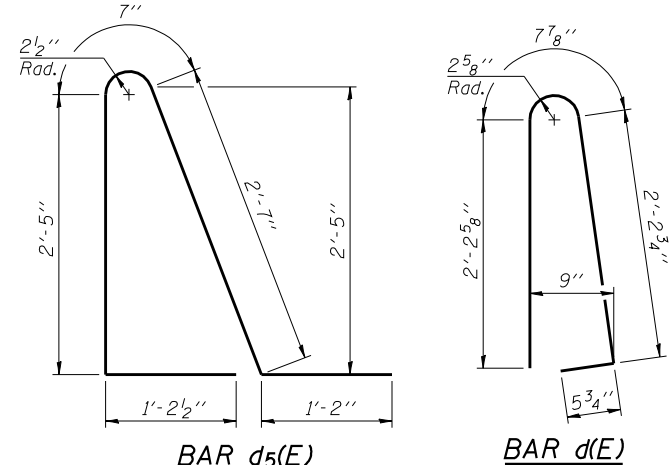
NEAR ABUTMENT

SECTION F-F

(See Plan for dimensions not shown)



AT APPROACH FOOTING

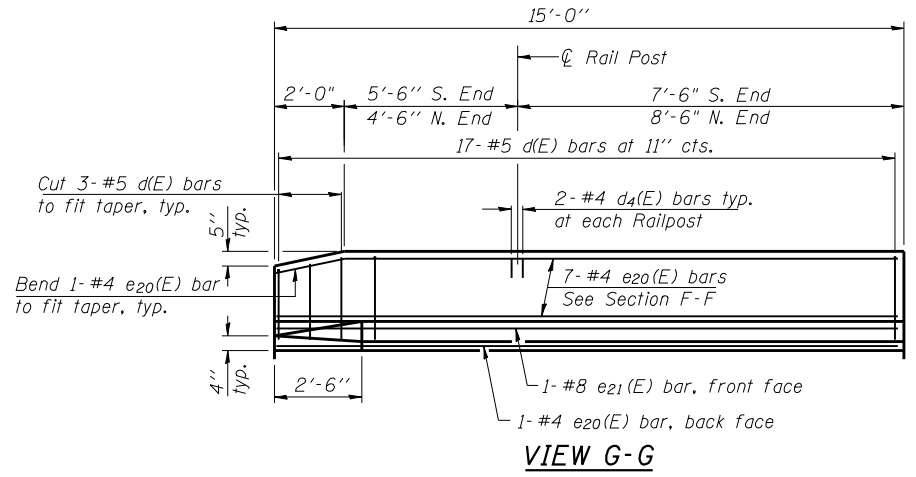


BAR d5(E)

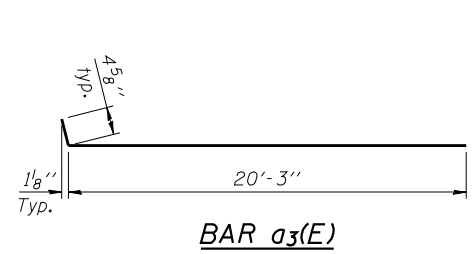
BAR d(E)

TWO APPROACHES
BILL OF MATERIAL

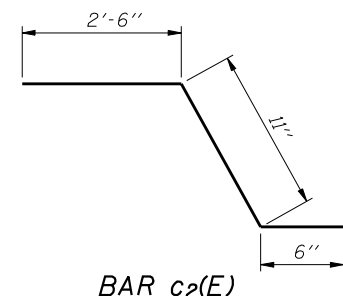
Bar	No.	Size	Length	Shape
a3(E)	100	#4	20'-8"	—
a4(E)	184	#5	20'-5"	—
a5(E)	24	#6	6'-0"	—
a6(E)	52	#4	4'-0"	—
a7(E)	92	#5	4'-0"	—
b5(E)	194	#9	29'-9"	—
b6(E)	4	#4	14'-8"	—
b7(E)	2	#4	14'-11"	—
b8(E)	16	#5	29'-8"	—
b9(E)	68	#4	29'-8"	—
c1(E)	60	#5	5'-8"	—
c2(E)	60	#5	3'-11"	—
d(E)	34	#5	5'-7"	—
d4(E)	8	#4	2'-0"	—
d5(E)	34	#5	7'-11"	—
d6(E)	24	#5	4'-6"	—
d7(E)	24	#6	4'-6"	—
d8(E)	10	#4	6'-4"	—
d9(E)	10	#6	6'-4"	—
e20(E)	28	#4	14'-8"	—
e21(E)	2	#8	14'-8"	—
e22(E)	8	#4	3'-8"	—
f(E)	188	#4	9'-8"	—
w(E)	160	#5	20'-5"	—
w1(E)	160	#5	4'-0"	—
Concrete Superstructure		Cu. Yd.	152.6	
Concrete Structures		Cu. Yd.	27.4	
Reinforcement Bars, Epoxy Coated		Pound	34,680	
Bar Splicers		Each	222	



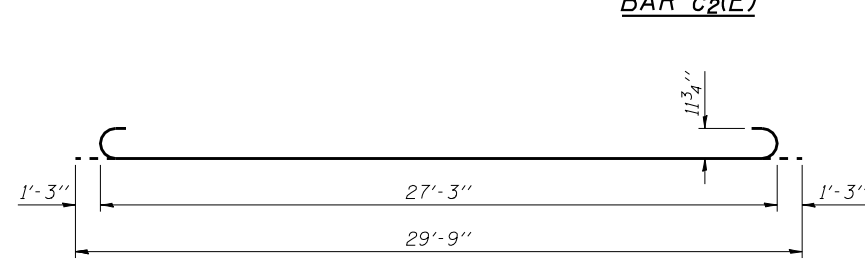
VIEW G-G



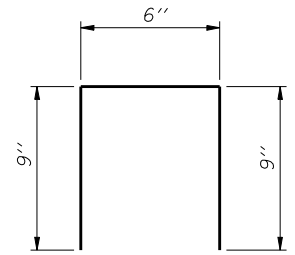
BAR a3(E)



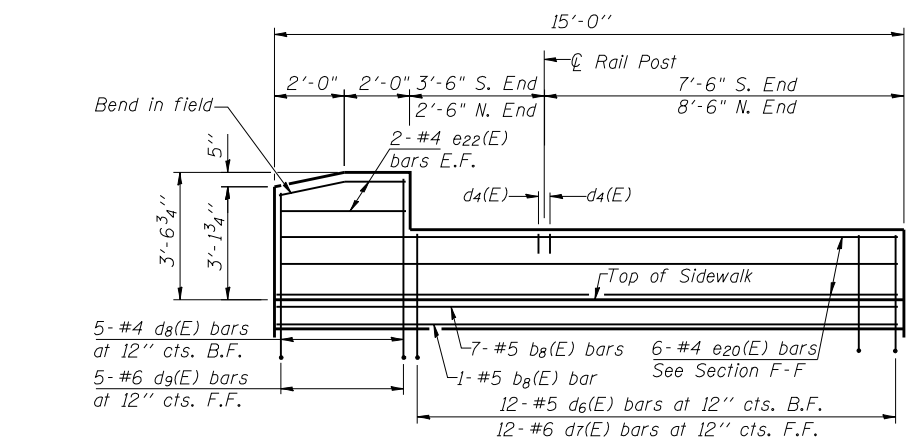
BAR c2(E)



BAR b5(E)



BAR d4(E)



VIEW H-H

BA-0 10-31-08

CB Coombe-Bloxdorf P.C.
 CIVIL ENGINEERS-
 STRUCTURAL ENGINEERS-
 LAND SURVEYORS-
 Design Firm License No. 184-002703

(Sheet 2 of 2)

PROJECT NO. 06027-3	F.A.P. RTE. 326	SECTION (137BR)BR	COUNTY CHAMPAIGN	TOTAL SHEETS 75	SHEET NO. 38
DATE 9/24/09	DESIGN BY TFG	SN 010-0287	CONTRACT NO. 70428		
DRAWN BY TFG	CHECKED BY MCB	FED. ROAD DIST. NO. 7 ILLINOIS FED. AID PROJECT			

PLOT DATE = 9/24/2009
 FILE NAME = c:\p11-18-approach-slab-details.dgn
 FILE SIZE = 1058134
 USER NAME = JML