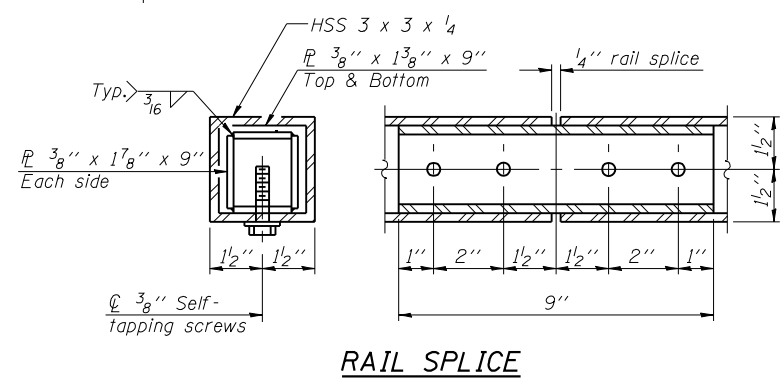
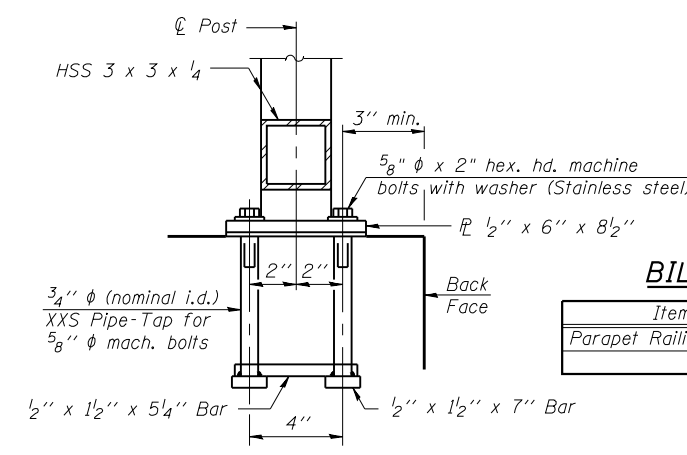
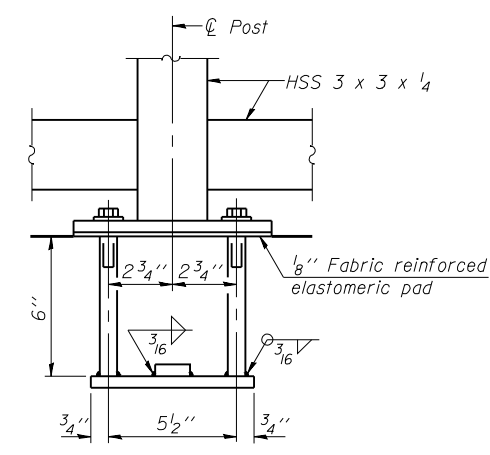
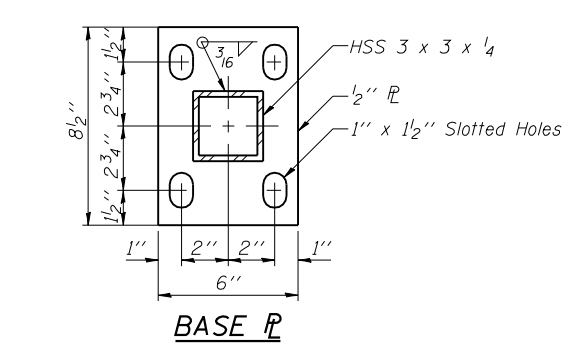
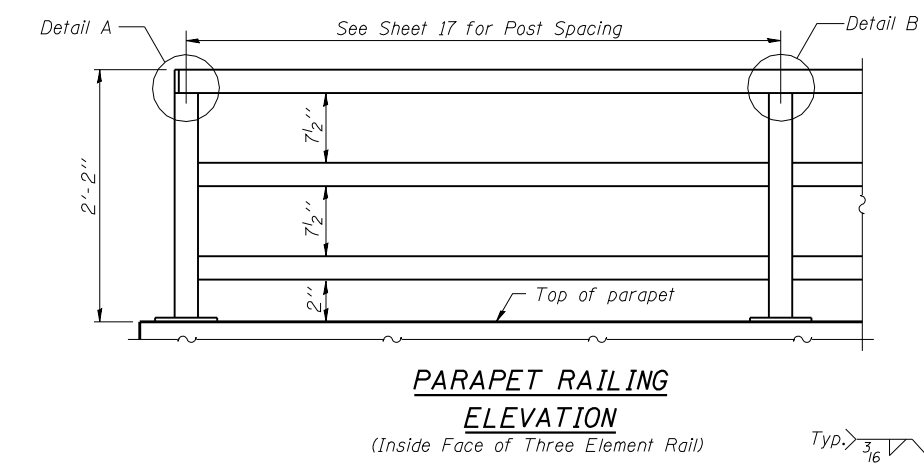
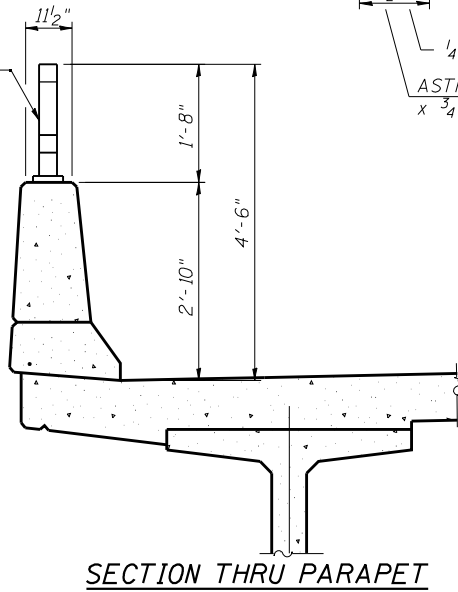
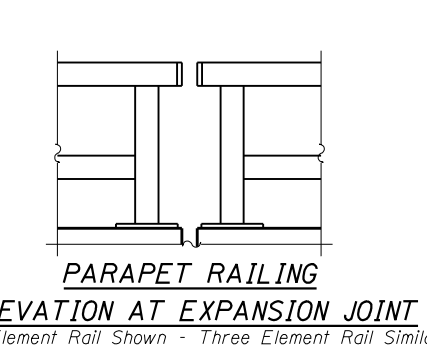
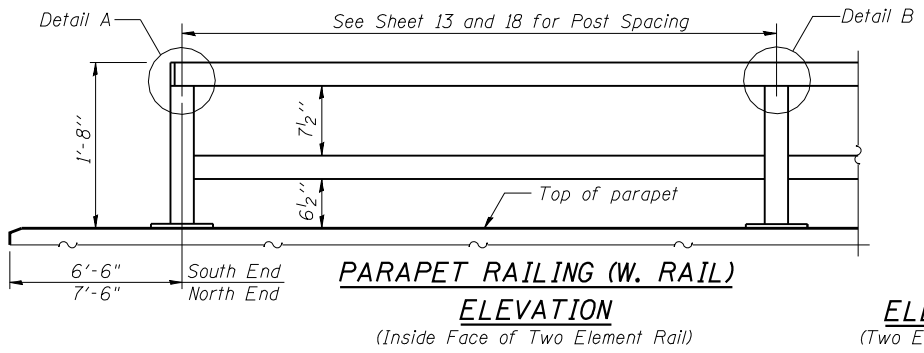


All steel rail elements shall be galvanized according to Article 509.05 of the Standard Specifications.



**ANCHOR BOLT DETAILS**

In lieu of the cast-in-place anchor device shown, the Contractor has the option of drilling and setting 5/8" φ anchor rods according to Article 509.06 of the Standard Specifications. Embedment shall be according to the manufacturer's specifications.

**BILL OF MATERIAL**

Item	Unit	Quantity
Parapet Railing	Foot	396

**PARAPET RAILING (W. RAIL)**  
**STRUCTURE NO. 010-0287**

<p><b>Coombe-Bloxdorf P.C.</b> - CIVIL ENGINEERS - - STRUCTURAL ENGINEERS - - LAND SURVEYORS - Design Firm License No. 184-002703</p>	PROJECT NO. 06027-3 SCALE DATE 8/03/09 DESIGN BY DRAWN BY TFG CHECKED BY MCB	SHEET NO. 19 36 SHEETS	F.A.P. RTE. 326 SECTION (137BR)BR COUNTY CHAMPAIGN SN 010-0287 FED. ROAD DIST. NO. 7 ILLINOIS	COUNTY CHAMPAIGN CONTRACT NO. 70428 FED. AID PROJECT	TOTAL SHEETS 75 SHEET NO. 39
---	---	---------------------------	---	--	---------------------------------

PLOT DATE = 9/24/2009  
 FILE NAME = c:\p\c\eg\egent-19-parapet-rail.dgn  
 FILE SIZE = 1058134 / IN.  
 USER NAME = JML