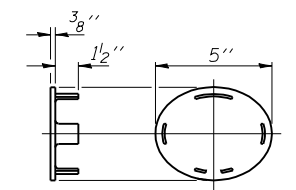


VIEW B-B

SECTION A-A

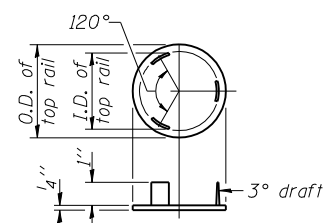
RAIL POST DETAILS

* In lieu of the cast-in-place anchor device shown, the Contractor has the option of drilling and setting stainless steel anchor rods of the same diameter and grade as the specified cap screws according to Article 509.06 of the Standard Specifications. Embedment shall be according to the manufacturer's specifications.



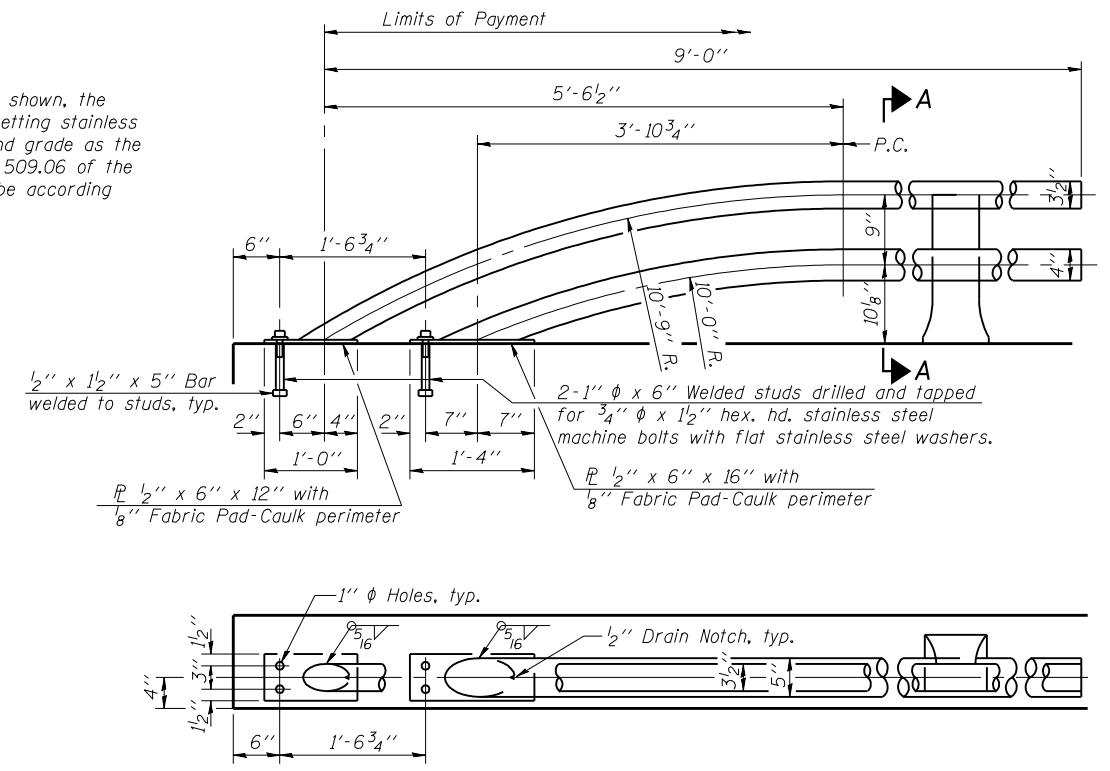
CAST END CAP

For bottom rail
DRIVE FIT TYPE



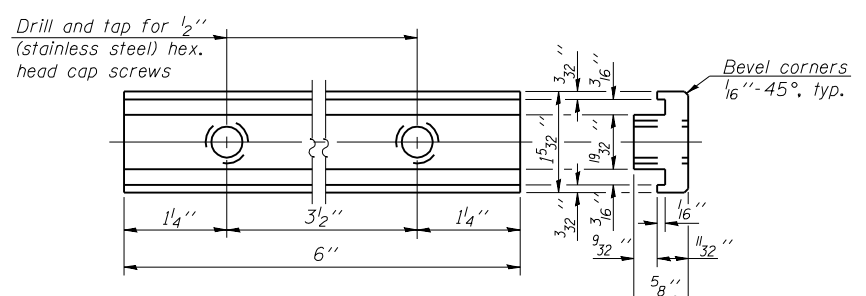
CAST END CAP

For top rail



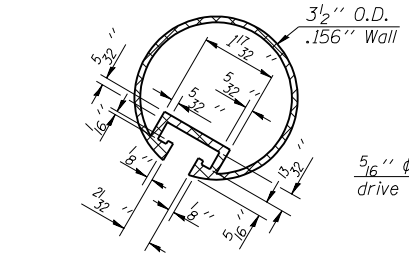
RAIL TERMINAL SECTION

Note:
The end rail post shall be set back as required for the terminal rail section.

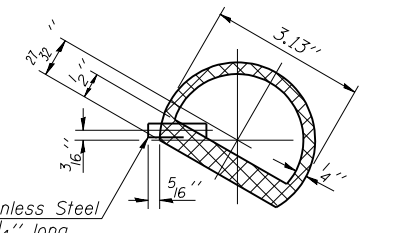


RAIL POST CLAMP BAR

For Top Rail

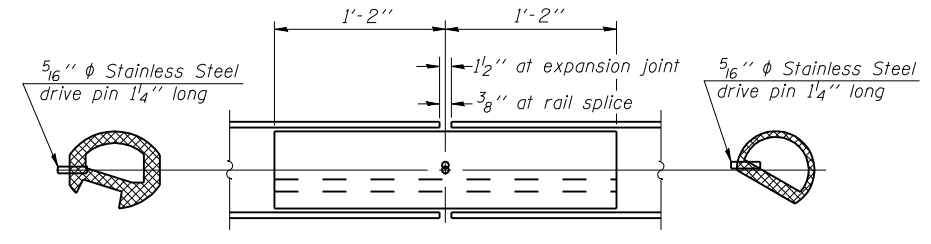


SECTION THRU TOP RAIL



SECTION THRU SPLICE

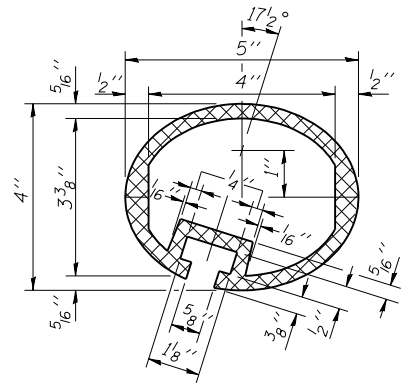
For Top Rail



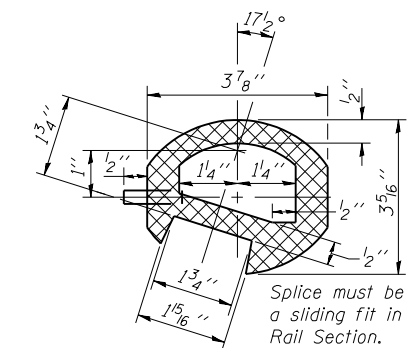
RAIL SPLICE

BOTTOM RAIL

TOP RAIL

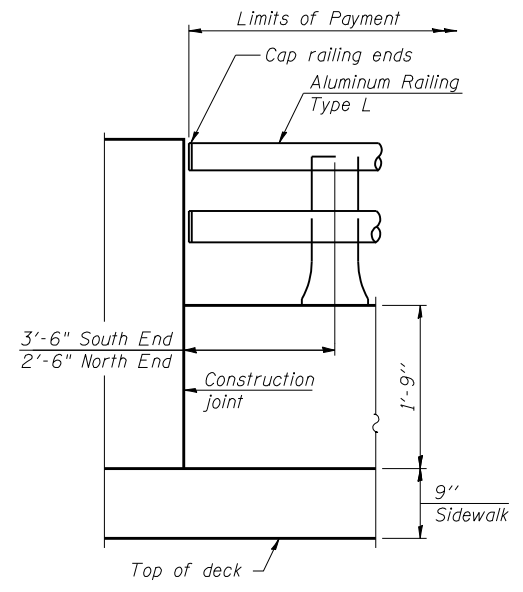


SEC. THRU ELLIPTICAL RAIL SECTION



SEC. THRU SPLICE

Splice must be a sliding fit in Rail Section.



RAIL END TREATMENT FOR TYPE 5 AND 6 TERMINAL

BILL OF MATERIAL

Item	Unit	Quantity
Aluminum Railing, Type L	Foot	402

ALUMINUM RAILING, TYPE L (E. RAIL) STRUCTURE NO. 010-0287

Notes:
All Posts shall be normal to parapet.
All joints in rail shall be spliced per detail.
All exposed rail ends shall be capped per detail.
Provide 1-1/8" and 2-1/16" Aluminum Shims for 25% of the Posts. Rail elements shall be parallel to Grade-high spots will be ground and low spots shimmed.
See sheet 14 & 18 of 36 for rail post spacing.

CB Coombe-Bloxdorf P.C.
- CIVIL ENGINEERS-
- STRUCTURAL ENGINEERS-
- LAND SURVEYORS-
Design Firm License No. 184-002703

PROJECT NO.	06027-3
SCALE	
DATE	8/03/09
DESIGN BY	
DRAWN BY	TFG
CHECKED BY	MCB

SHEET NO. 20
36 SHEETS

F.A.P. RTE.	SECTION	COUNTY	TOTAL SHEETS	SHEET NO.
326	(137BR)BR	CHAMPAIGN	75	40
SN 010-0287		CONTRACT NO. 70428		
FED. ROAD DIST. NO. 7 ILLINOIS FED. AID PROJECT				