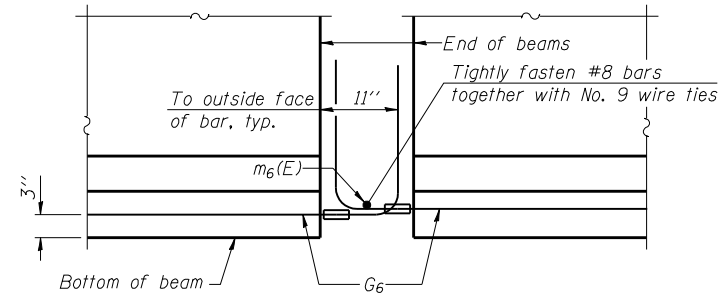
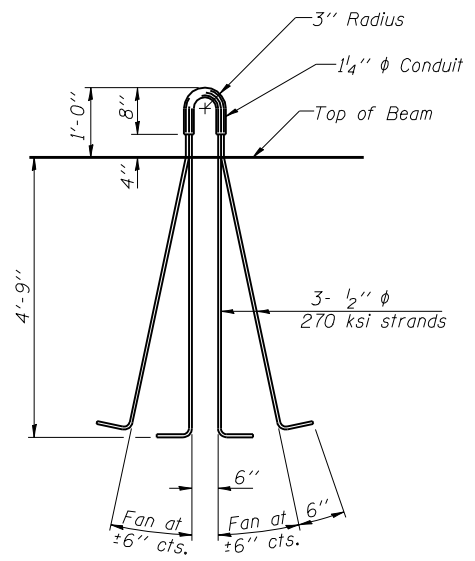


**NOTES**

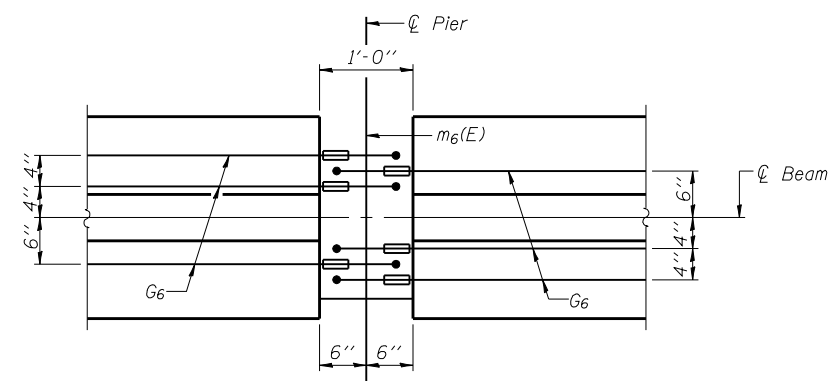
Inserts for  $\frac{3}{4}$ "  $\phi$  threaded dowel rods, when specified, are to be two strut, ferrule type for interior beams and single ferrule, flared loop type for exterior beams.  
 Prestressing steel shall be uncoated high strength, low relaxation 7-wire strand, Grade 270. The nominal diameter shall be  $\frac{1}{2}$ " and the nominal cross-sectional area shall be 0.153 sq. in.  
 Reinforcement bars shall conform to ASTM A 706, Grade 60. (See Special Provisions). A minimum  $2\frac{1}{2}$ "  $\phi$  lifting pin shall be used to engage the lifting loops during handling. Tilt G<sub>6</sub> bars when necessary to maintain  $1\frac{1}{2}$ " clearance.  
 The top and bottom plates shall be AASHTO M270 Grade 50. The bottom plates and studs shall be galvanized according to AASHTO M111. Threaded rods shall be ASTM F 1554 Grade 55.  
 The G<sub>6</sub> bar assembly shall have the threaded ends oversized to ensure no reduction in cross sectional area after threading. The coupler splice shall be capable of developing 125 percent of the yield strength of the reinforcement bar.



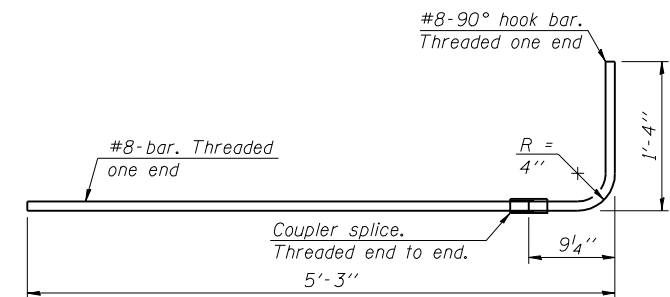
**ELEVATION OF BEAM AT PIER**



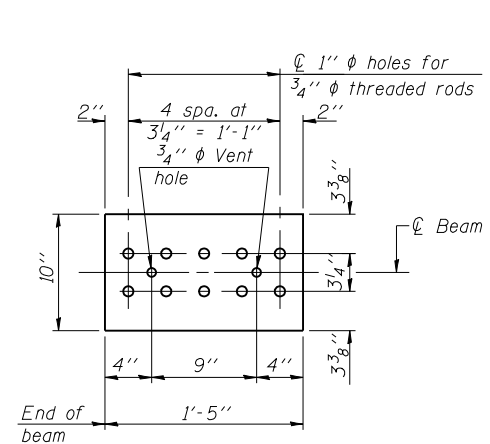
**LIFTING LOOP DETAIL**



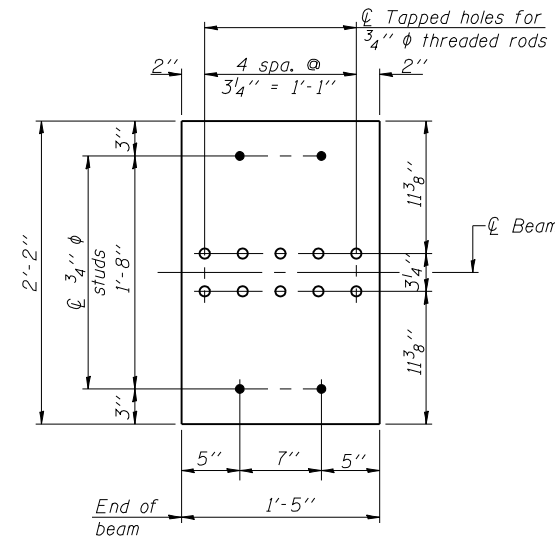
**PLAN OF BEAM AT PIER**



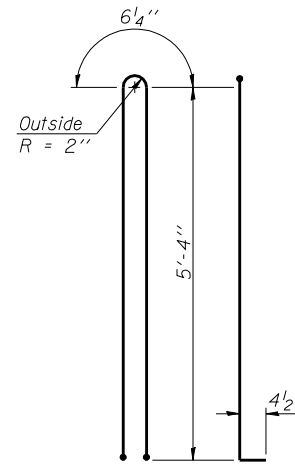
**G6 BAR ASSEMBLY**



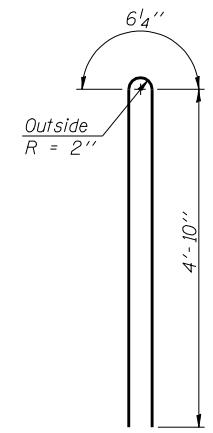
**TOP PLATE**



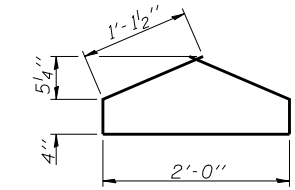
**BOTTOM PLATE**



**BAR G1**



**BAR G2**



**BAR G4**

**BILL OF MATERIAL**

| Item   | Unit | Total |
|--|------|-------|
| Furnishing and Erecting Precast Prestressed Concrete Bulb T-Beams, 63" | Ft.  | 2252  |

**63" PPC BULB T-BEAM DETAILS  
STRUCTURE NO. 010-0287**

|   |   |                               |   |   |
|---|---|-------------------------------|---|---|
| Coombe-Bloxdorf P.C.<br>- CIVIL ENGINEERS -<br>- STRUCTURAL ENGINEERS -<br>- LAND SURVEYORS -<br>Design Firm License No. 184-002703 | PROJECT NO. 06027-3<br>SCALE<br>DATE 8/03/09<br>DESIGN BY<br>DRAWN BY TFG<br>CHECKED BY MCB | SHEET NO. 26<br><br>36 SHEETS | F.A.P. RTE. 326<br>SECTION (137BR)BR<br>COUNTY CHAMPAIGN<br>TOTAL SHEETS 75<br>SHEET NO. 46 | CONTRACT NO. 70428<br>FED. ROAD DIST. NO. 7 ILLINOIS FED. AID PROJECT |
|---|---|-------------------------------|---|---|

PLOT DATE = 9/24/2009  
 FILE NAME = pbt-4-63d-beam-details.dgn  
 FILE SIZE = 1058134 1 / IN.  
 USER NAME = JML