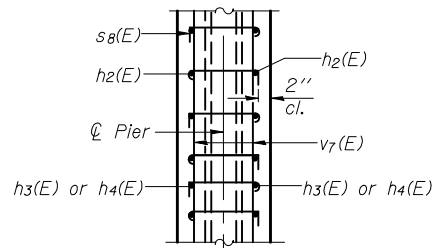
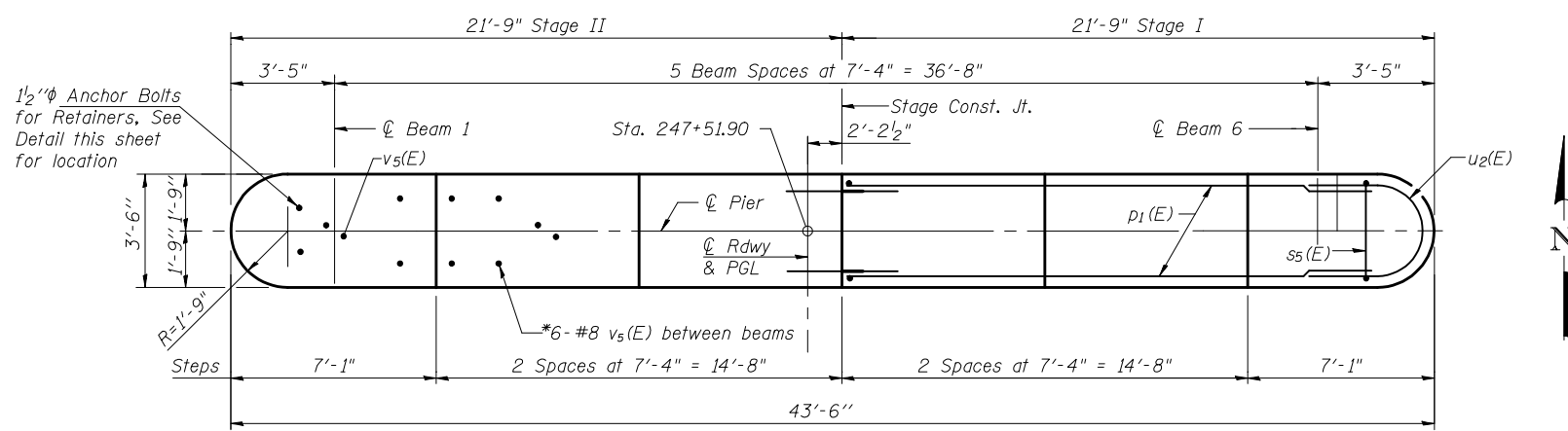


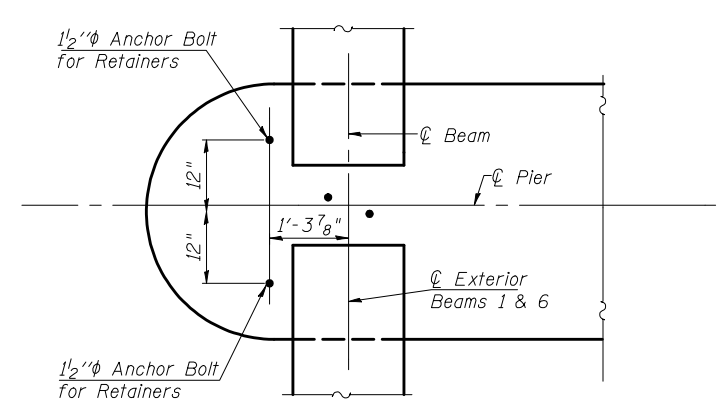
Notes:
 Space reinforcement in cap to miss anchor bolts.
 Pour steps monolithically with cap.
 For details of piles and encasement, see sheet 32 of 36.
 For details of Bar Splicers see sheet 33 of 36.



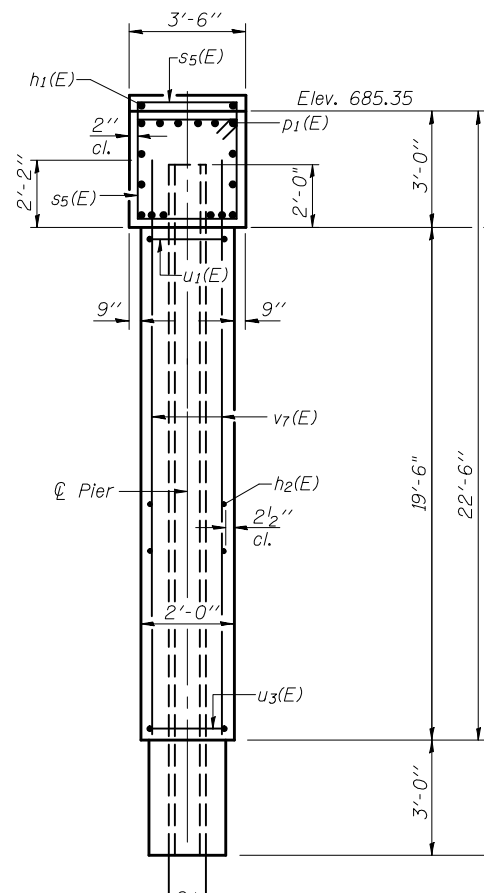
**SECTION THRU WALL
 SHOWING s8(E) BARS**



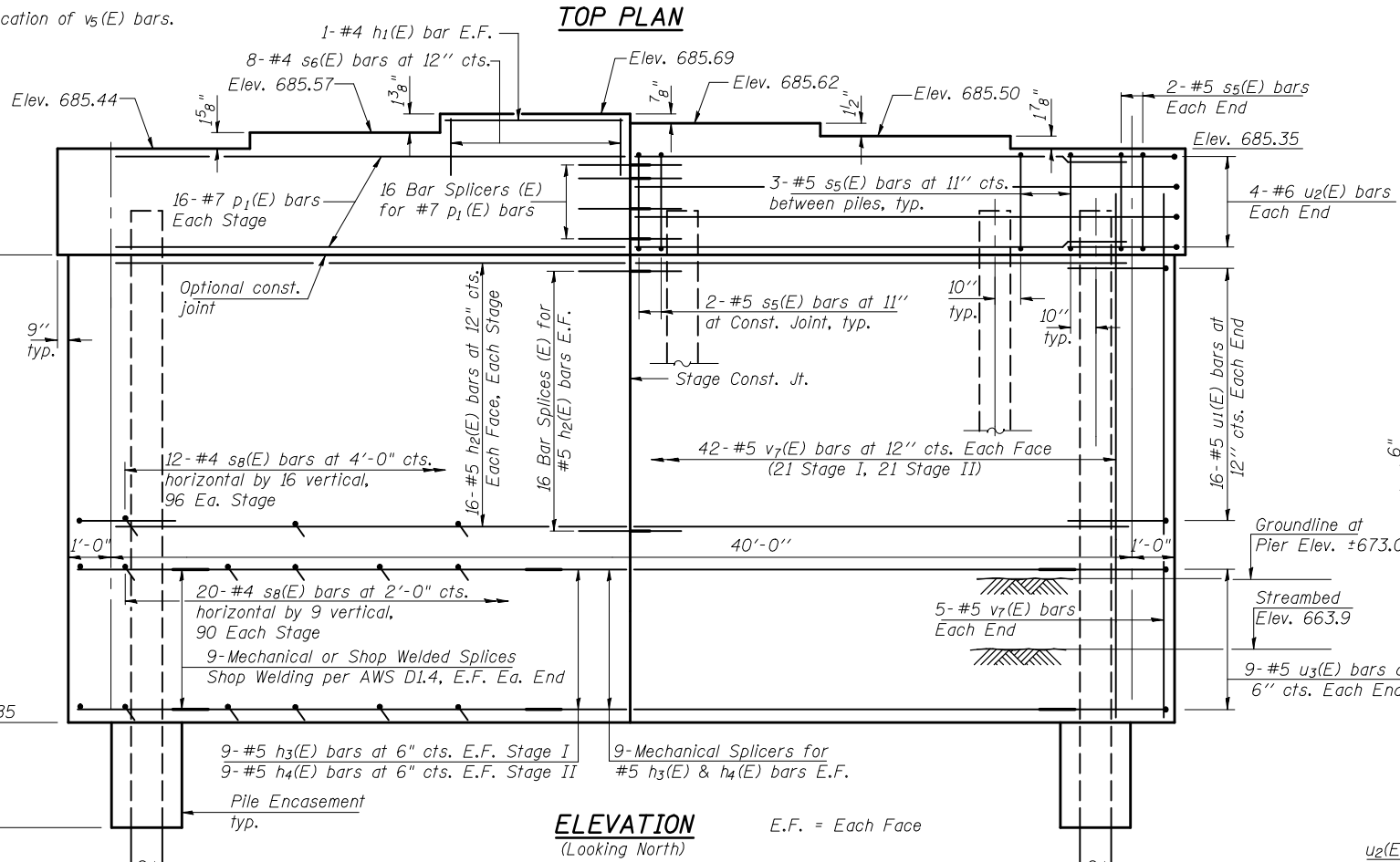
TOP PLAN



ANCHOR BOLT LOCATION DETAIL

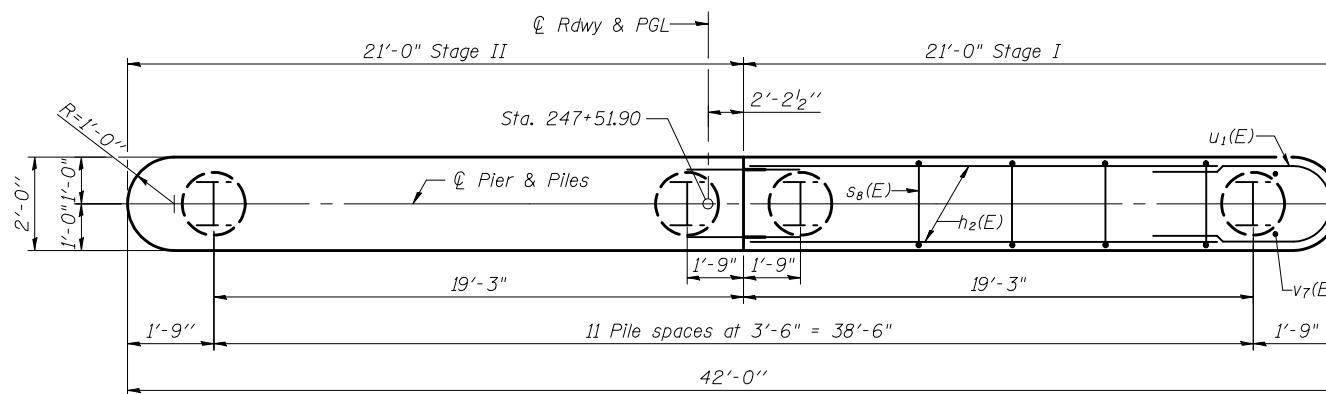


END VIEW

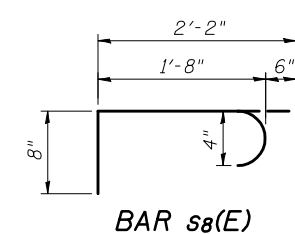


**ELEVATION
 (Looking North)**

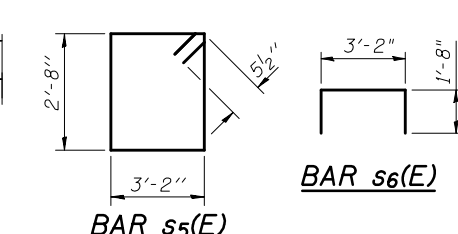
E.F. = Each Face



PLAN

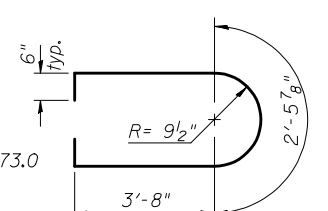


BAR s8(E)

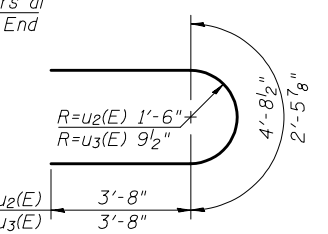


BAR s5(E)

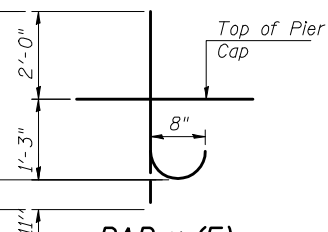
BAR s6(E)



BAR u1(E)



BARS u2(E) & u3(E)



BAR v5(E)

BILL OF MATERIAL

Bar	No.	Size	Length	Shape
h1(E)	2	#4	7'-0"	—
h2(E)	64	#5	19'-10"	—
h3(E)	18	#5	17'-10"	—
h4(E)	18	#5	14'-10"	—
p1(E)	32	#7	19'-10"	—
s5(E)	38	#5	12'-7"	□
s6(E)	8	#4	6'-6"	□
s8(E)	372	#4	2'-10"	□
u1(E)	32	#5	10'-10"	U
u2(E)	8	#6	12'-1"	U
u3(E)	18	#5	9'-10"	U
v5(E)	42	#8	4'-2"	U
v7(E)	94	#5	21'-7"	—
Structure Excavation		Cu. Yd.	103	
Concrete Structures		Cu. Yd.	77.7	
Reinforcement Bars, Epoxy Coated		Pound	7760	
Furnishing Steel Piles HP 14 x 73		Foot	1067	
Driving Piles		Foot	1067	
Test Pile Steel HP 14 x 73		Each	1	
Underwater Structure Excavation Protection, Location 3		Each	1	
Concrete Encasement		Cu. Yd.	6.5	
Bar Splicers		Each	48	
Mechanical Splice		Each	54	

PILE DATA

Type: Steel HP 14x73
 Nominal Required Bearing: 578 kip
 Factored Resistance Available: 285 kip
 Est. Length: 97 ft.
 No. Production Piles: 11
 No. Test Piles: 1

NOTE

If a portion of the pier wall or concrete encasement is under water, reinforcement may be placed underwater into forms. Concrete shall be tremied according to Article 503.08 of the Standard Specifications to an elevation of 1'-0" above the water line at the time of construction.

Coombe-Bloxdorf P.C.
 CIVIL ENGINEERS
 STRUCTURAL ENGINEERS
 LAND SURVEYORS
 Design Firm License No. 184-002708

PROJECT NO. 06027-3	SHEET NO. 31
DATE 9/24/09	36 SHEETS
DESIGN BY RM/MCB	
DRAWN BY TFG	
CHECKED BY MCB	

F.A.P. RTE. 326	SECTION (137BR)BR	COUNTY CHAMPAIGN	TOTAL SHEETS 75	SHEET NO. 51
SN 010-0287		CONTRACT NO. 70428		
FED. ROAD DIST. NO. 7 ILLINOIS FED. AID PROJECT				

**PIER 3
 STRUCTURE NO. 010-0287**

PLOT DATE = 10/23/2009
 FILE NAME = c:\pwworking\cbl\1015\1015.dwg
 FILE SIZE = 1024
 USER NAME = STUFFSJK