

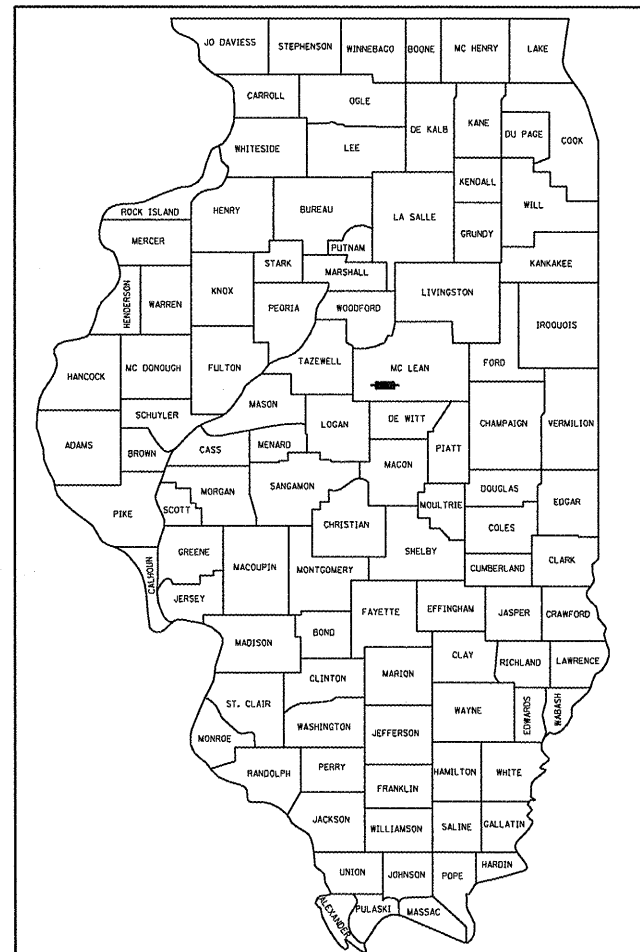
STATE OF ILLINOIS
DEPARTMENT OF TRANSPORTATION
DIVISION OF HIGHWAYS

**PROPOSED
HIGHWAY PLANS**

FAP ROUTE 315 (US 136)
SECTION 121-BR-1
PROJECT ACF-0315(056)
MCLEAN COUNTY
STRUCTURE REPLACEMENT
C-95-048-06
MUD CREEK 2.1 MILES WEST OF US 51

F.A.P. RTE.	SECTION	COUNTY	TOTAL SHEETS	SHEET NO.
315	121-BR-1	MCLEAN	67	1
FED. ROAD DIST. NO.	ILLINOIS	CONTRACT NO. 70528		

D-95-047-06



LOCATION OF SECTION INDICATED THUS: — ■ —

FOR INDEX OF SHEETS, SEE SHEET NO. 2
FOR SUMMARY OF QUANTITIES, SEE SHEET NO. 3

DECATUR, ILLINOIS

ENGINEERS - CONSULTANTS

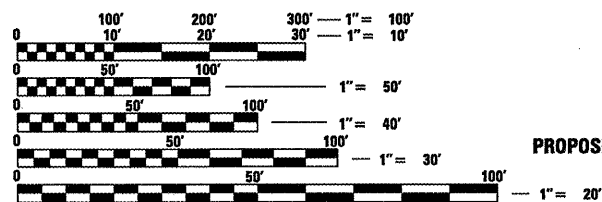
BLANK, WESSELINK, COOK & ASSOCIATES

PROPOSED IMPROVEMENT BEGINS
Sta. 381+00.00

PROPOSED SN 057-2041
TRIPLE 12X12' BOX CULVERT
@ STA. 387+15.00
SKEW 45° (RT. FWD.)
114'-0" OUT TO OUT HEADWALLS

PROPOSED IMPROVEMENT ENDS
Sta. 398+00.00

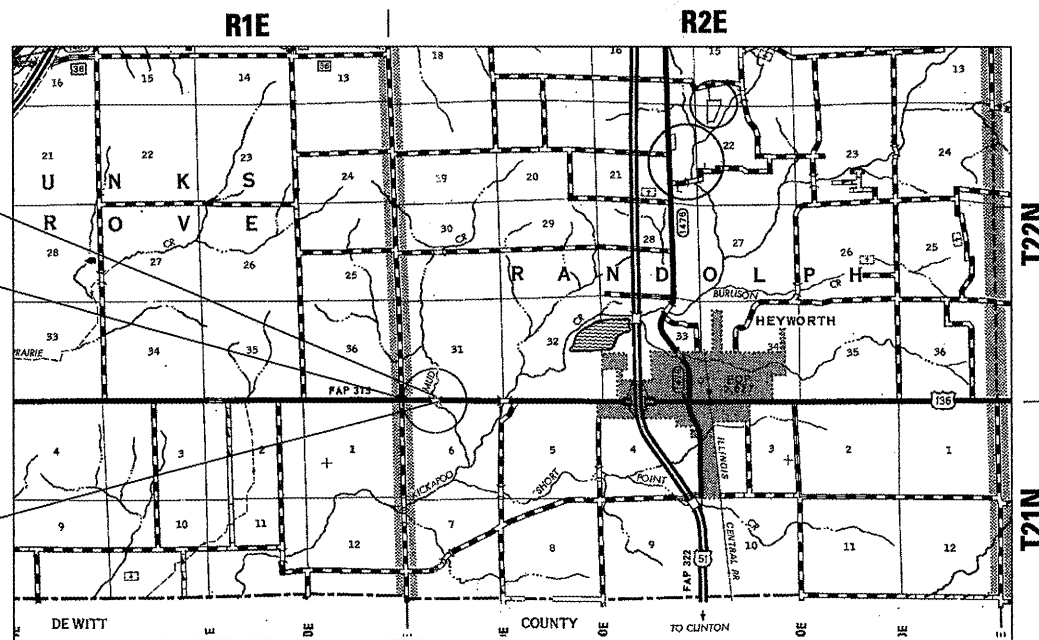
OTHER PRINCIPAL ARTERIAL
ADT=2700 (2007)
SU=11.4%, MU=25.1%
PC=63.5%



FULL SIZE PLANS HAVE BEEN PREPARED USING STANDARD
ENGINEERING SCALES. REDUCED SIZED PLANS WILL NOT
CONFORM TO STANDARD SCALES. IN MAKING MEASUREMENTS
ON REDUCED PLANS, THE ABOVE SCALES MAY BE USED.

J.U.L.I.E.
JOINT UTILITY LOCATION INFORMATION FOR EXCAVATION
1-800-892-0123
OR 811 RANDOLPH TOWNSHIP

PROJECT ENGINEER: NANCY FASIG
CONSULTANT LIASON: JASON STULTS
DISTRICT 5 NO. 217-465-4181
CONTRACT NO. 70528



LOCATION MAP

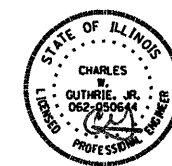


GROSS & NET LENGTH OF PROJECT = 1700.00 FEET = 0.32 MILES

STATE OF ILLINOIS
DEPARTMENT OF TRANSPORTATION
DIVISION OF HIGHWAYS

SUBMITTED 10/22 20 09
Joseph E. Cowger
DEPUTY DIRECTOR OF HIGHWAYS, REGION ENGINEER
December 4, 20 09
Charles G. Ingersoll
ENGINEER OF DESIGN AND ENVIRONMENT
December 4, 20 09
Christine M. Reed
DIRECTOR OF HIGHWAYS, CHIEF ENGINEER

BLANK, WESSELINK, COOK & ASSOCIATES
ENGINEERS - CONSULTANTS
DECATUR, ILLINOIS



Charles W. Guthrie, Jr.
CHARLES W. GUTHRIE, JR., P.E.

DATE October 21 20 09
EXPIRES NOVEMBER 30, 2009

PRINTED BY THE AUTHORITY
OF THE STATE OF ILLINOIS