

STATE OF ILLINOIS
DEPARTMENT OF TRANSPORTATION

GENERAL NOTES

Reinforcement bars shall conform to the requirements of ASTM A 706 Gr 60. See Special Provisions.

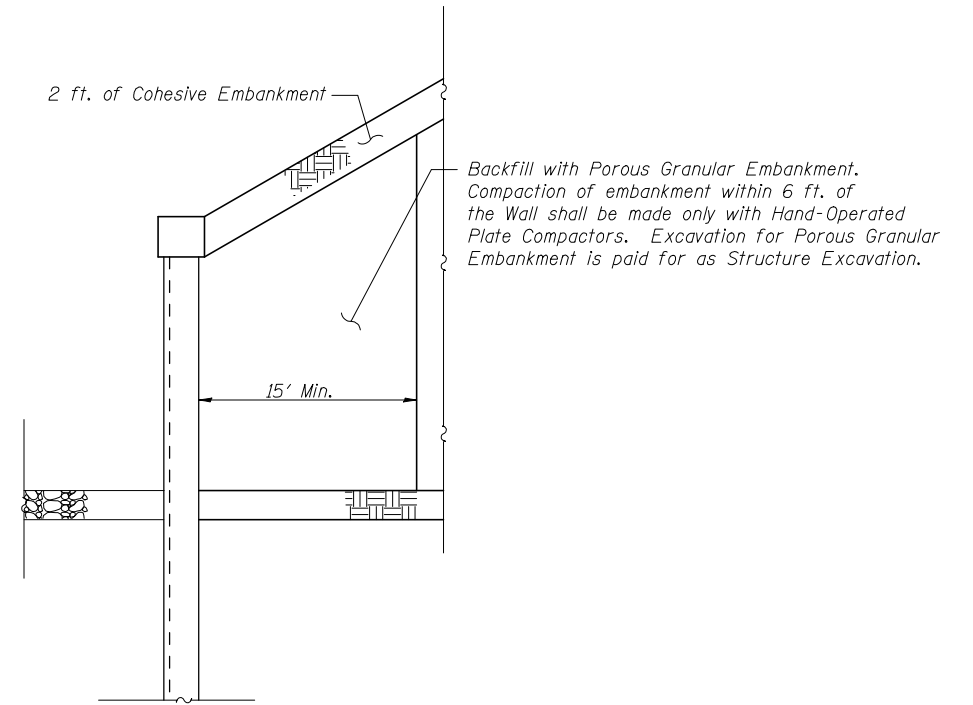
Layout of the slope protection system may be varied to suit ground conditions in the field as directed by the Engineer.

Precast Alternative not allowed.

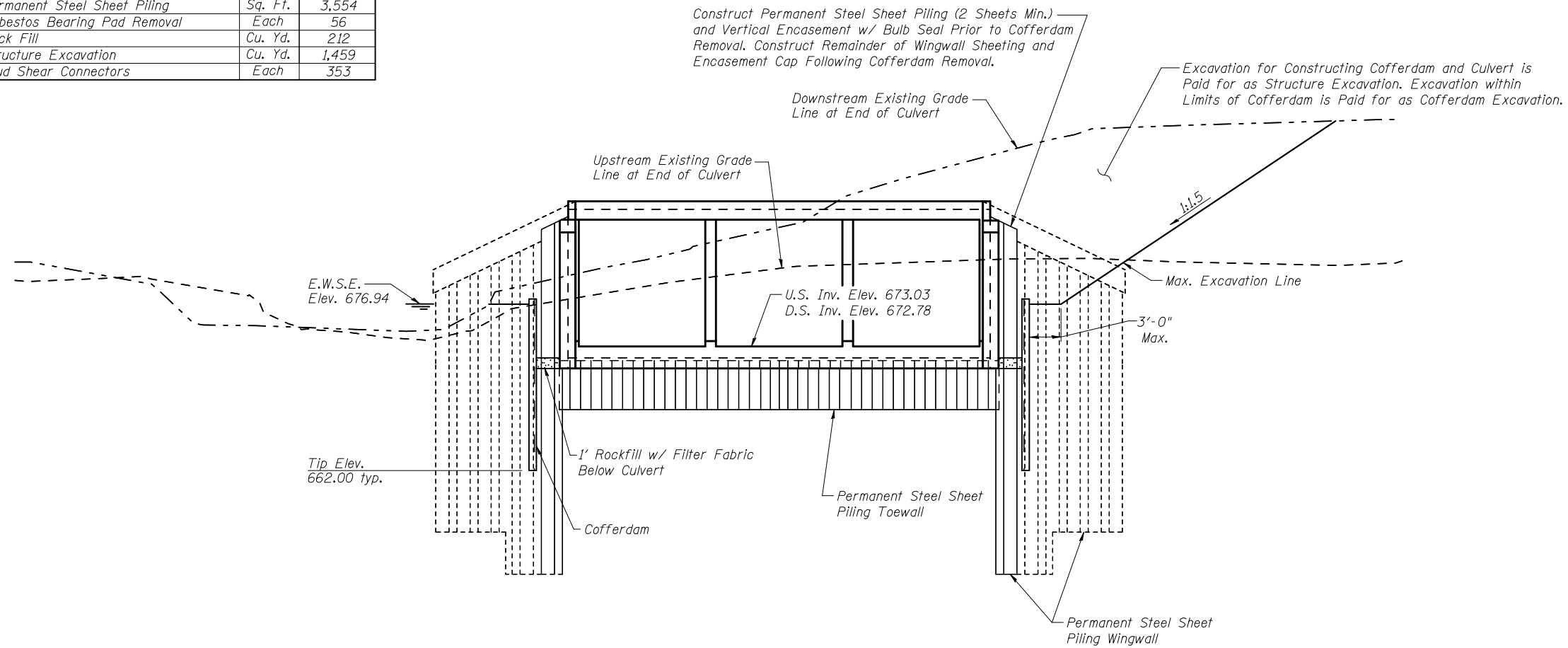
Design of Cofferdam and Dewatering System by Contractor per Sec. 502.06.

TOTAL BILL OF MATERIAL

ITEM	UNIT	TOTAL
Stone Riprap, Class A4	Sq. Yd.	620
Filter Fabric	Sq. Yd.	1,197
Porous Granular Embankment	Cu. Yd.	834
Removal of Existing Structures	Each	1
Reinforcement Bars	Pound	126,360
Concrete Box Culverts	Cu. Yd.	586
Cofferdams	Each	1
Cofferdam Excavation	Cu. Yd.	1,329
Name Plates	Each	1
Permanent Steel Sheet Piling	Sq. Ft.	3,554
Asbestos Bearing Pad Removal	Each	56
Rock Fill	Cu. Yd.	212
Structure Excavation	Cu. Yd.	1,459
Stud Shear Connectors	Each	353



**TYPICAL SECTION
AT WINGWALLS**



COFFERDAM AND STAGING DETAILS

**GENERAL NOTES AND DETAILS
STRUCTURE NO. 057-2041**

SHEET NO. 2	F.A.P. RTE.	SECTION	COUNTY	TOTAL SHEETS	SHEET NO.
	315	121-BR-1	MCLEAN	67	30
7 SHEETS	CONTRACT NO. 70528				
FED. ROAD DIST. NO.		ILLINOIS	FED. AID PROJECT		