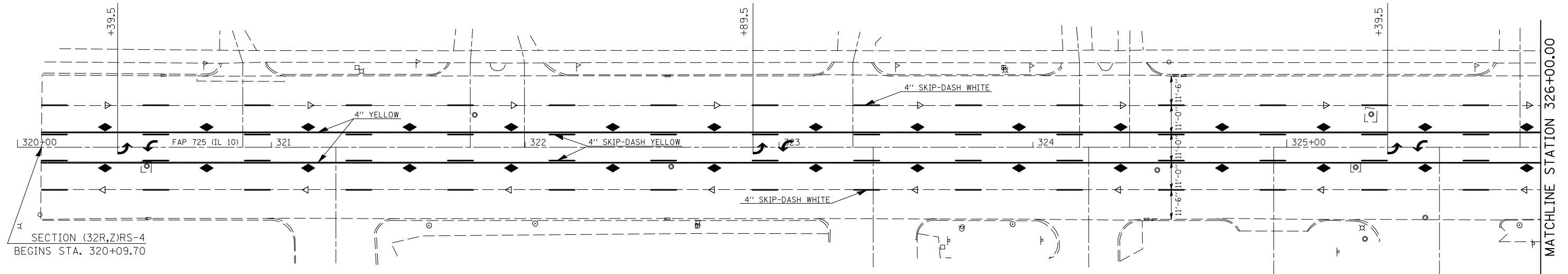
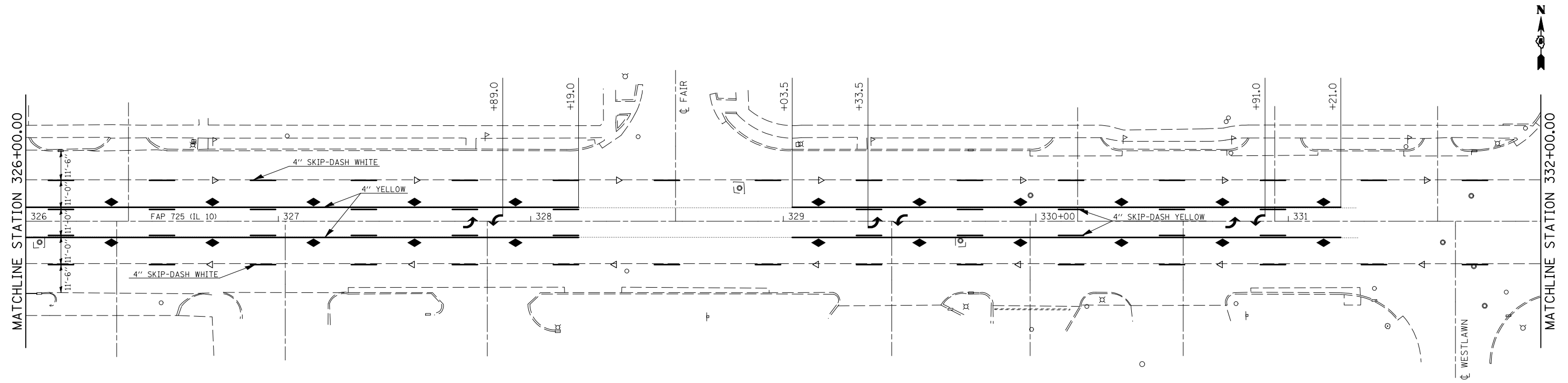


SEC. 11, T 19 N, R 12 W, 2ND PM



SEC. 14, T 19 N, R 12 W, 2ND PM
SEC. 11, T 19 N, R 12 W, 2ND PM



SEC. 14, T 19 N, R 12 W, 2ND PM

FILE NAME = c:\pwwork\pwidot\HOGANBJ\d0142445\0570782.sht\pmk.dgn	USER NAME = hoganbj	DESIGNED -	REVISED -	STATE OF ILLINOIS DEPARTMENT OF TRANSPORTATION	PAVEMENT MARKING PLANS			F.A.P. RTE. 725	SECTION (32R,Z)RS-4	COUNTY CHAMPAIGN	TOTAL SHEETS 35	SHEET NO. 21
PLOT SCALE = 40.0000' / IN.	CHECKED -	REVISED -	REVISED -		SCALE: 1" = 20'	SHEET NO. 1 OF 4 SHEETS	STA.	TO STA.	CONTRACT NO. 70782			
PLOT DATE = 10/19/2009	DATE -	REVISED -	REVISED -		ILLINOIS FED. AID PROJECT							