

F.A.D. RTE.	SECTION	COUNTY	TOTAL SHEETS	SHEET NO.
SBI4	L-1501B	MACOUPIN	21	12
STA. 1614+50 TO STA. 1618+81.33				
FED. ROAD DIST. NO. 6 ILLINOIS FED. AID PROJECT				

BM*2 CHSLD."□" ON N.E. WINGWALL OF STRUCTURE #059-0046. ELEV. = 645.02

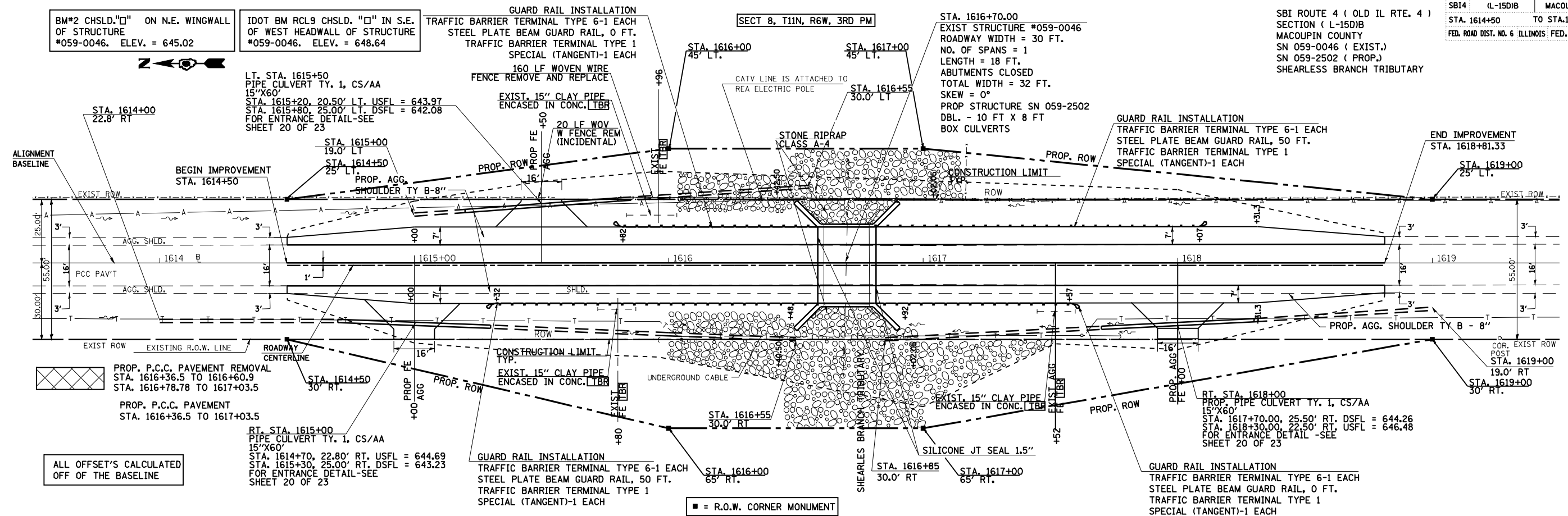
IDOT BM RCL9 CHSLD. "□" IN S.E. OF WEST HEADWALL OF STRUCTURE #059-0046. ELEV. = 648.64

SECT 8, T11N, R6W, 3RD PM

STA. 1616+70.00
EXIST STRUCTURE #059-0046
ROADWAY WIDTH = 30 FT.
NO. OF SPANS = 1
LENGTH = 18 FT.
ABUTMENTS CLOSED
TOTAL WIDTH = 32 FT.
SKEW = 0°
PROP STRUCTURE SN 059-2502
DBL. - 10 FT X 8 FT
BOX CULVERTS

SBI ROUTE 4 (OLD IL RTE. 4)
SECTION (L-1501B
MACOUPIN COUNTY
SN 059-0046 (EXIST.)
SN 059-2502 (PROP.)
SHEARLESS BRANCH TRIBUTARY

PLAN	SURVEYED	DATE
	PLOTTED	
	CHECKED	
	BY	
	NO. OF WAY CHECKED	
	CADD FILE NAME	
	NO.	



PROFILE	SURVEYED	DATE
	PLOTTED	
	CHECKED	
	BY	
	NO. OF WAY CHECKED	
	STRUCTURE NOTATIONS CHRD	
	NO.	

