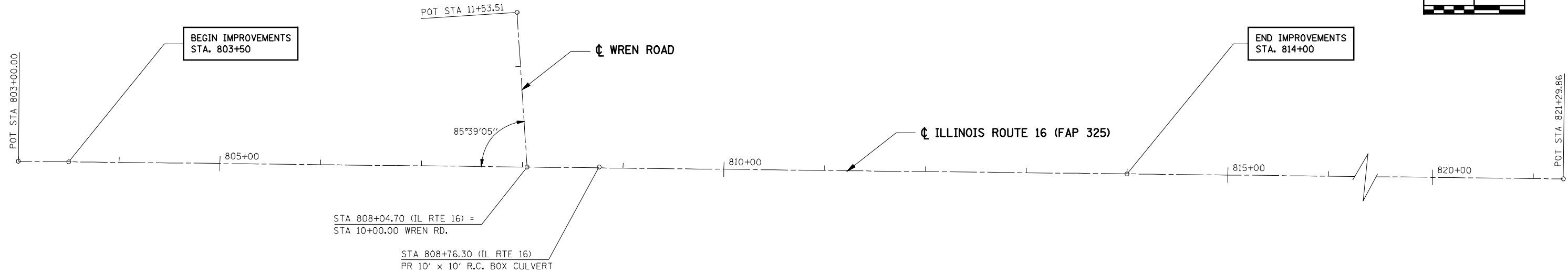
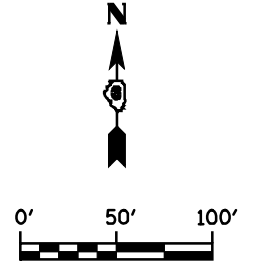
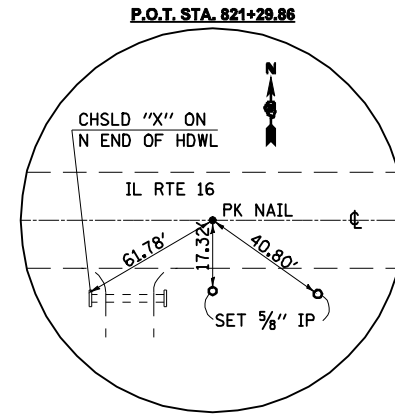
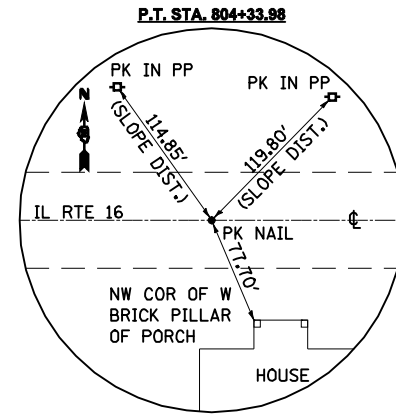
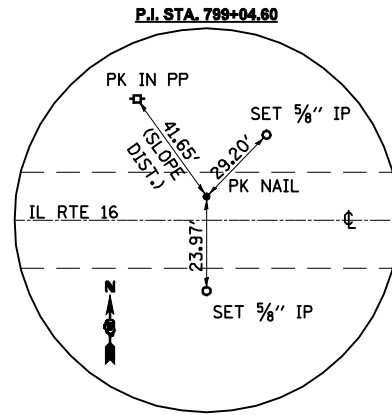
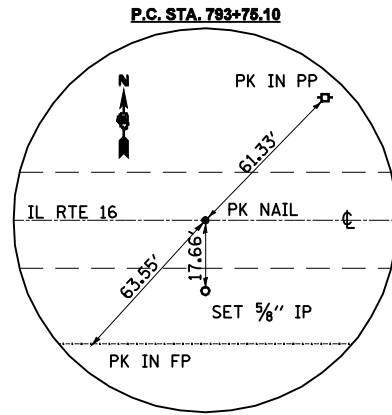
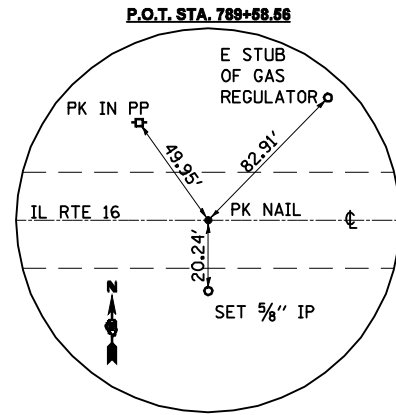


BMCL 204: SET CHISELED SQUARE IN CENTER OF SOUTH HEADWALL OF 10x10 BOX CULVERT ON IL 16 JUST EAST OF INTERSECTION OF IL 16 AND WREN RD (425E) STA. 808+58, 28' RT. NAVD 88 ELEV = 602.24



FILE NAME =	USER NAME = laughlinr1	DESIGNED -	REVISED -
e:\pwwork\pwidot\LAUGHLINRL\10169540\10169540.dgn		DRAWN -	REVISED -
PLOT SCALE = 100.0000' / IN.		CHECKED -	REVISED -
PLOT DATE = Oct-21-2009 11:08:35AM		DATE -	REVISED -

**STATE OF ILLINOIS
DEPARTMENT OF TRANSPORTATION**

**ALIGNMENT, TIES &
BENCHMARKS**

SCALE: SHEET NO. OF SHEETS STA. TO STA.

F.A.P. RTE.	SECTION	COUNTY	TOTAL SHEETS	SHEET NO.
325	114 (B-1)	MACOUPIN	57	12
CONTRACT NO. 72646				
ILLINOIS FED. AID PROJECT				