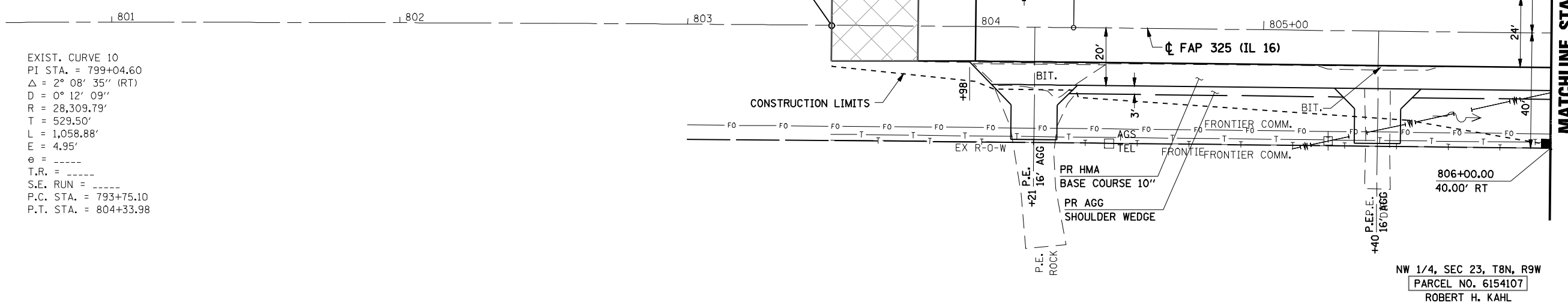
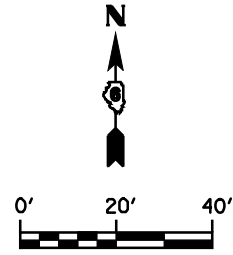
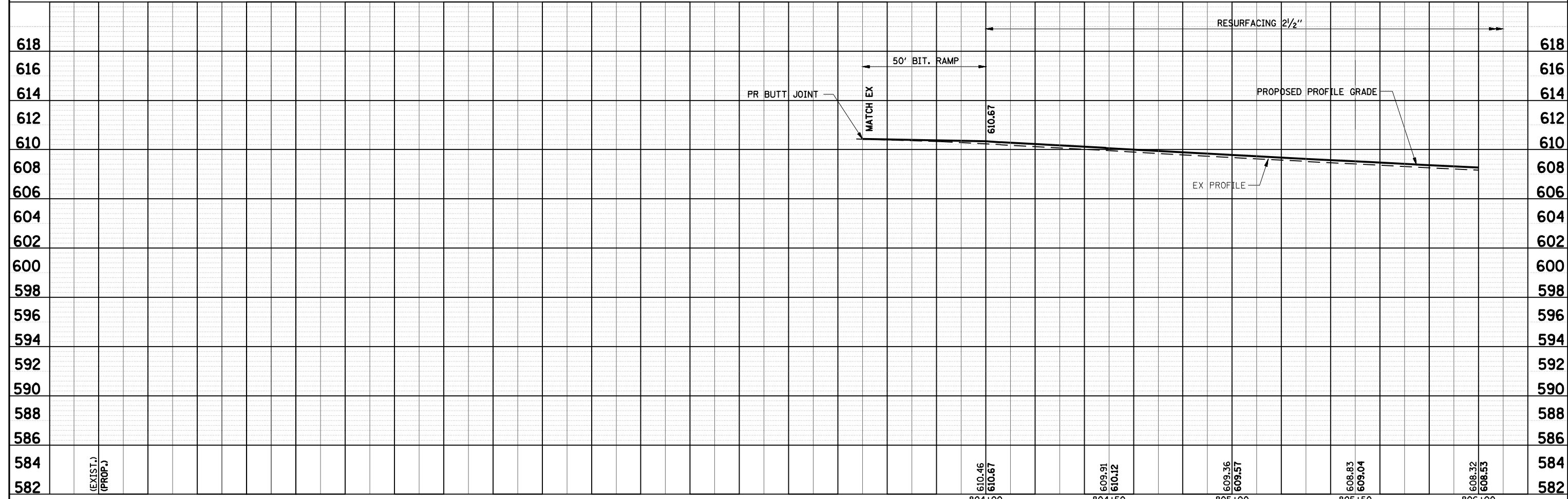


PLAN	REVIEWED	DATE
	PLOTTED	
	ALIGNED	
	CHECKED	
	CADD FILE NAME	
NOTE BOOK NO.		

PROFILE	REVIEWED	DATE
	PLOTTED	
	GRADES CHECKED	
	STRUCTURE NOTATIONS OK'D	
NOTE BOOK NO.		



EXIST. CURVE 10
 PI STA. = 799+04.60
 $\Delta = 2^\circ 08' 35''$ (RT)
 $D = 0^\circ 12' 09''$
 $R = 28,309.79'$
 $T = 529.50'$
 $L = 1,058.88'$
 $E = 4.95'$
 $\theta = \text{---}$
 $T.R. = \text{---}$
 $S.E. RUN = \text{---}$
 $P.C. STA. = 793+75.10$
 $P.T. STA. = 804+33.98$



FILE NAME =	USER NAME = #USER#	DESIGNED -	REVISED -	STATE OF ILLINOIS DEPARTMENT OF TRANSPORTATION	ROADWAY PLAN AND PROFILE			F.A.P. RTE.	SECTION	COUNTY	TOTAL SHEETS	SHEET NO.	
*FILE#		DRAWN - TRF	REVISED -		SCALE: 1"=20'	SHEET NO.	OF SHEETS	STA. 803+50 TO STA. 806+00	325	114 (B-1)	MACOUPIN	57	27
		CHECKED - RG	REVISED -								CONTRACT NO. 72646		
		DATE - 7/31/09	REVISED -								ILLINOIS FED. AID PROJECT		