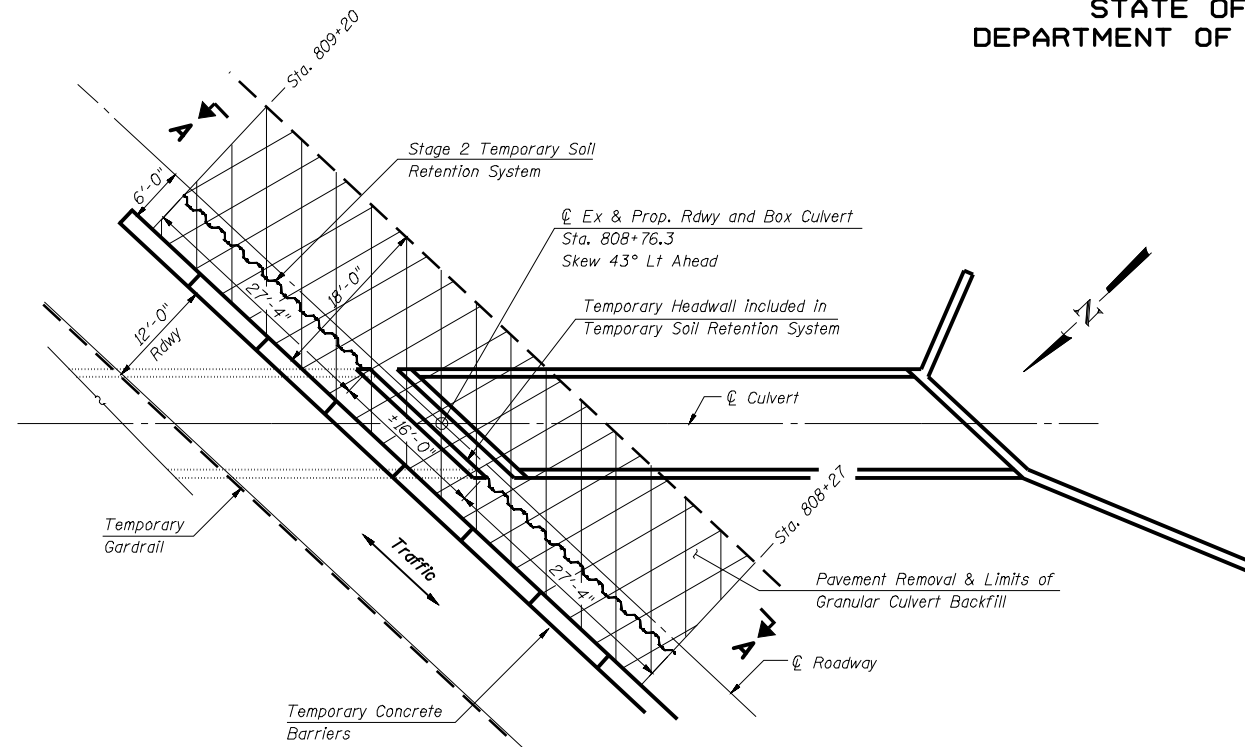
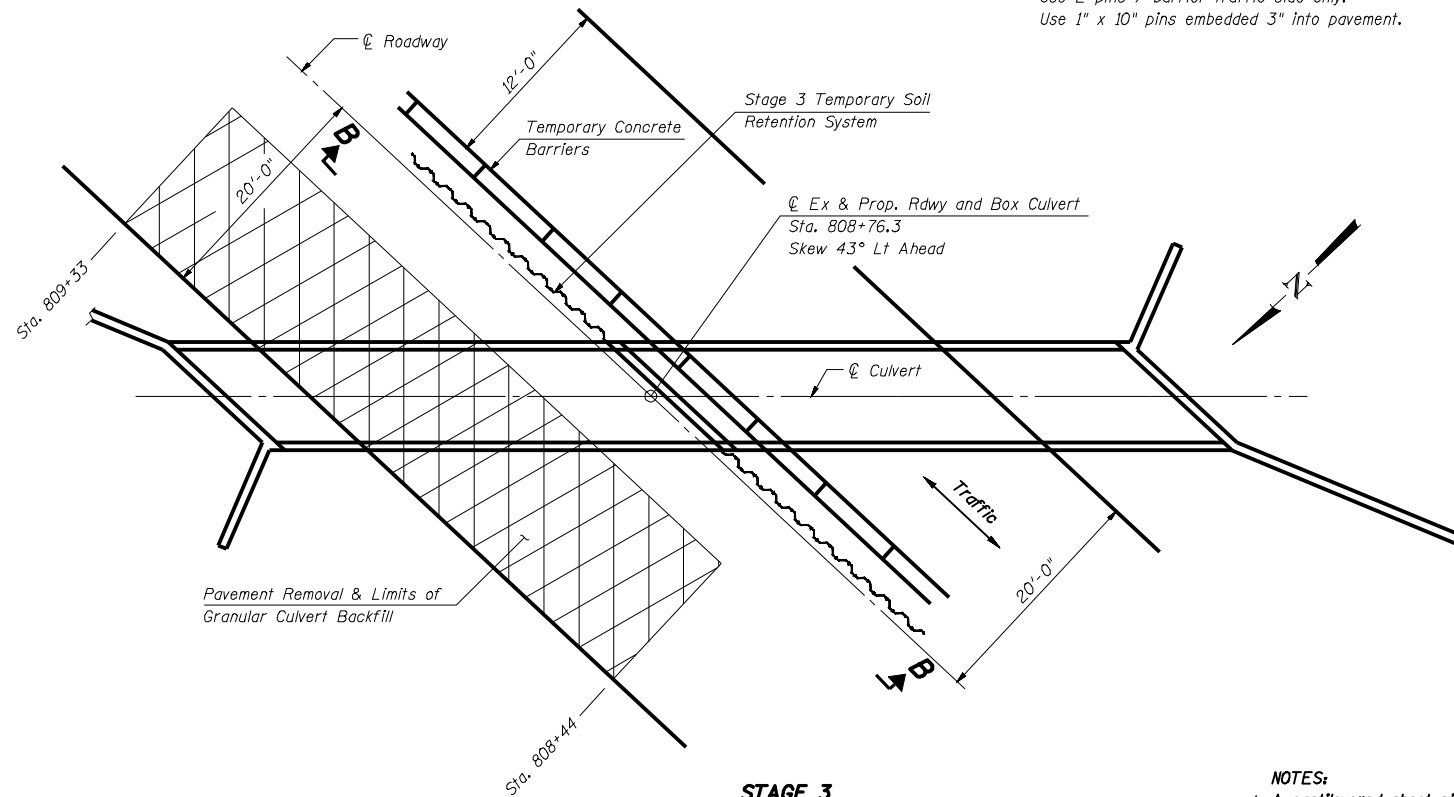


STATE OF ILLINOIS
DEPARTMENT OF TRANSPORTATION

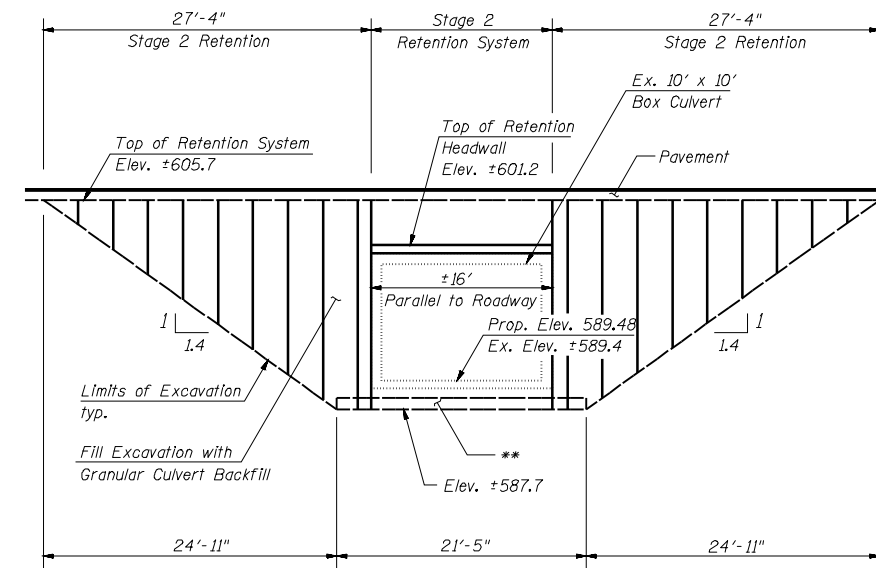


STAGE 2

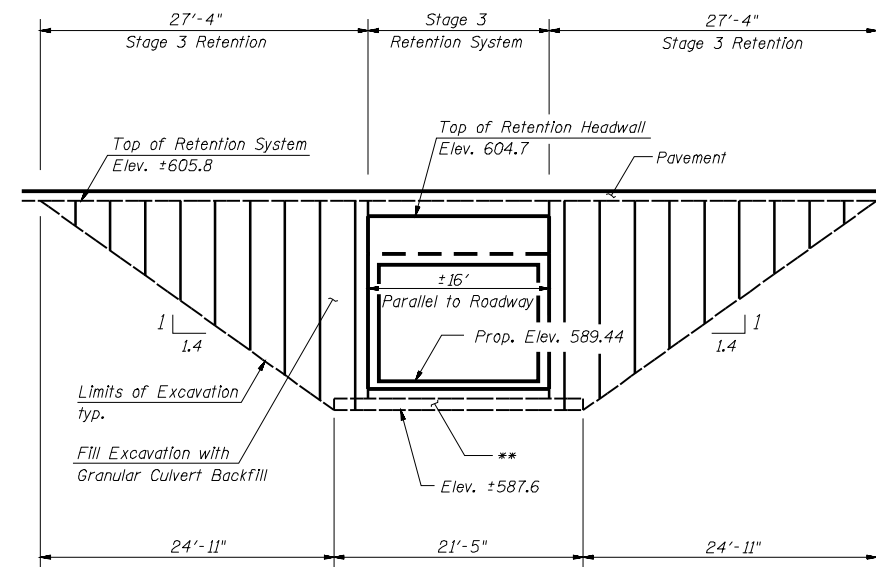
NOTE:
Pin all Barriers along Pavement Removal.
Use 2 pins / barrier traffic side only.
Use 1" x 10" pins embedded 3" into pavement.



STAGE 3



SECTION A-A
(Parallel to Roadway)



SECTION B-B
(Parallel to Roadway)

** Removal and replacement of weak soils with rockfill foundations may be required beneath the culvert. The Engineer will determine the required depth following excavation to Plan Grade.

BILL OF MATERIALS

ITEM	UNIT	QTY.
TEMPORARY SOIL RETENTION SYSTEM	SQ FT	1,256
GRANULAR CULVERT BACKFILL	CU YD	1,834
ROCK FILL - FOUNDATION	TON	130

**STAGE CONSTRUCTION DETAILS
& TEMPORARY SOIL RETENTION
STRUCTURE No. 059-7102**

DESIGNED	SCD
CHECKED	DRB
DRAWN	THW
CHECKED	SCD

ie
consultants
IE CONSULTANTS, INC
6420 SOUTH SIXTH STREET
SPRINGFIELD, ILLINOIS 62712
TEL. (217) 529-8027
FAX (217) 529-4543
WWW.IE-CONSULTANTS.COM

- NOTES:
- A cantilevered sheet piling design does not appear feasible and additional members or other retention system may be necessary. The Contractor shall submit a temporary soil retention system design including plan details and calculations for review and acceptance by the Engineer.
 - Pay Item for Temporary Concrete Barrier are Included in Roadway Plans.
 - Removal of existing culvert and wingwalls shall be paid for as REMOVAL OF EXISTING STRUCTURE #1.
 - Removal of Unsuitable Material Shall be Included in the cost for Rock-Fill Foundation.

SHEET NO. 2 OF 5 SHEETS	F.A.P. RTE.	SECTION	COUNTY	TOTAL	SHEET NO.
	325	114 (B-1)	MACOUPIN	57	40
FED. ROAD DIST. NO.			ILLINOIS FED. AID PROJECT		
CONTRACT NO. 72646					