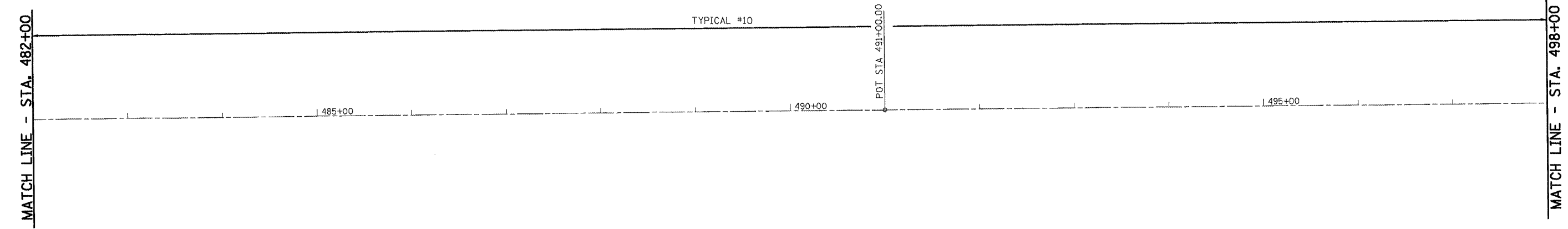
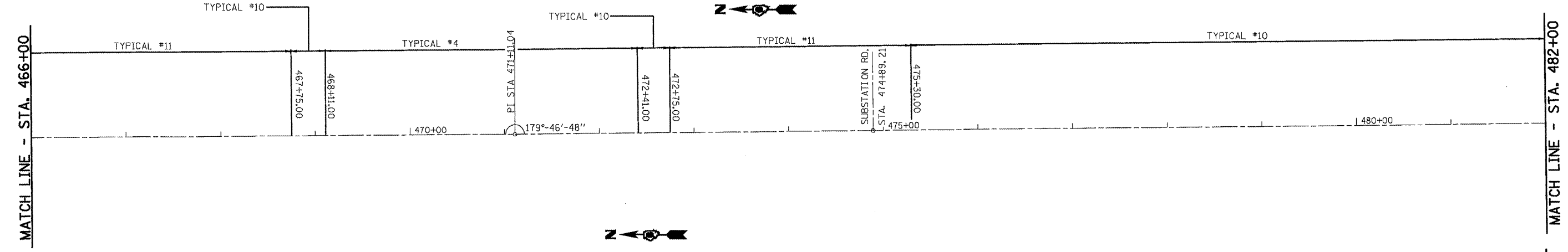
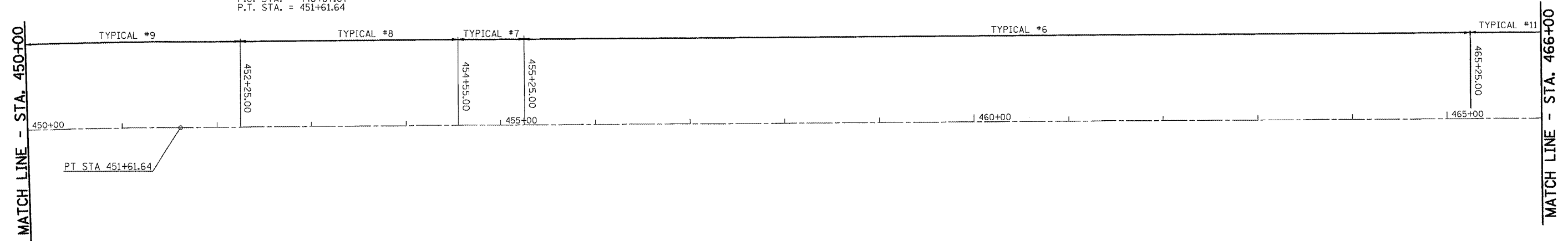


EXIST. CURVE 53
 P.I. STA. = 450+24.67
 $\Delta = 2^{\circ} 07' 30''$ (RT)
 $DO = 0^{\circ} 46' 32''$
 $TR = 7,386.61'$
 $L = 137.00'$
 $UM = 273.97'$
 $DM = 1.27'$
 P.C. STA. = 448+87.67
 P.T. STA. = 451+61.64



FILE NAME = S:\PROJ ENGR 1 (Negangard)\Dust Squad\FAP

USER NAME = madonnavj
 662 (IL 4) Henderson pdfa\CADD Sheets\067

DESIGNED -
 DRAWN -
 CHECKED -
 DATE -

REVISED -
 REVISED -
 REVISED -
 REVISED -



Allen Henderson & Associates, Inc.
 Civil and Structural Engineers Springfield, IL.
 62703 Phone: (217)544-8033 IL Design Firm
 No. 184-001907

LINE DIAGRAM
 SCALE: SHEET NO. 3 OF 4 SHEETS STA. 450+00 TO STA. 498+00

F.A.P. RTE.	SECTION	COUNTY	TOTAL SHEETS	SHEET NO.
662	DW-3,RS-11,CR	MACOUPIN	102	19
FED. ROAD DIST. NO. ILLINOIS FED. AID PROJECT			CONTRACT NO. 72765	