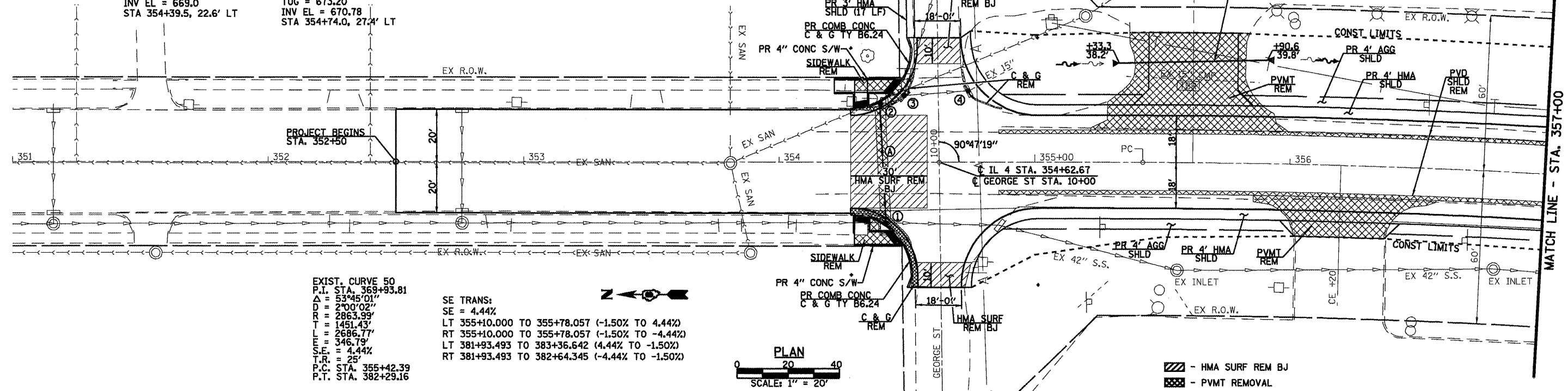


DATE	
BY	
PLAN	
SURVEYED	
PLOTTED	
CHECKED	
DATE	
BY	
NOTE BOOK	
NO.	
DATE	
BY	
STRUCTURE	
NO.	
DATE	
BY	

- ① EX F & G [TBR]
EX MH TO BE ADJ
W/ NEW TY 3 F & G
TOG EL. 672.67
INV EL = 666.25
STA 354+41.8, 23.5' RT.
- ② PR INLET TY A W/
TY 3 F & G
TOG EL. 672.67
INV EL = 669.0
STA 354+39.5, 22.6' LT
- ③ EX F & G [TBR]
EX INLET TO BE ADJ
W/ NEW TY 1 FR & OPEN LID
TOG EL = 673.00
INV EL = 670.65
STA 354+48.9, 25.5' LT
- ④ EX F & G [TBR]
EX INLET TO BE ADJ W/
NEW TY 1 FR & CLOSED LID
TOG = 673.20
INV EL = 670.78
STA 354+74.0, 27.4' LT

⑤ 44 LF STORM SEWERS, CL A, TY 1 15"
354+39.5, 21.3' LT. USFL = 669.0
354+41.8, 22.5' RT. DSFL = 668.5



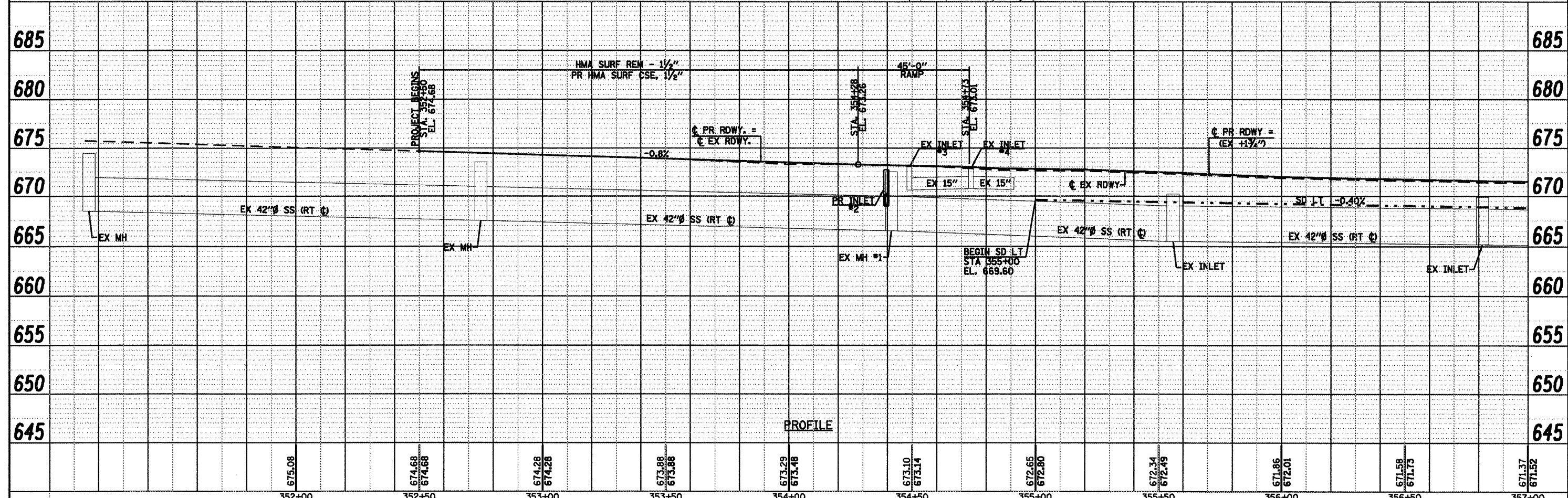
EXIST. CURVE 50
P.I. STA. 369+93.81
Δ = 53°45'01"
D = 270'00"
R = 2863.99'
L = 1451.43'
T = 2686.77'
E = 346.79'
S.E. = 4.44%
T.R. = 25'
P.C. STA. 355+42.39
P.T. STA. 382+29.16

SE TRANS:
SE = 4.44%
LT 355+10.000 TO 355+78.057 (-1.50% TO 4.44%)
RT 355+10.000 TO 355+78.057 (-1.50% TO -4.44%)
LT 381+93.493 TO 383+36.642 (4.44% TO -1.50%)
RT 381+93.493 TO 382+64.345 (-4.44% TO -1.50%)

PLAN
SCALE: 1" = 20'

▨ - HMA SURF REM BJ
▩ - PVMT REMOVAL

DATE	
BY	
PROFILE	
SURVEYED	
PLOTTED	
CHECKED	
DATE	
BY	
NOTE BOOK	
NO.	
DATE	
BY	
STRUCTURE	
NO.	
DATE	
BY	



FILE NAME =	USER NAME = laughlinrj	DESIGNED -	REVISED -		Allen Henderson & Associates, Inc. Civil and Structural Engineers Springfield, IL. 62703 Phone: (217)544-8033 IL Design Firm No. 184-001907	PLAN & PROFILE SCALE: 1" = 20' SHEET NO. 1 OF 4 SHEETS STA. 351+00 TO STA. 357+00	F.A.P. RTE. 662 SECTION DIW-3,RS-1L,CRJ COUNTY MACOUPIN TOTAL SHEETS 102 CONTRACT NO. 72765 SHEET NO. 29
DESIGNED -	REVISED -	DRAWN -	REVISED -				
CHECKED -	REVISED -	CHECKED -	REVISED -				
DATE = 11-28-09 03:17:43PM							