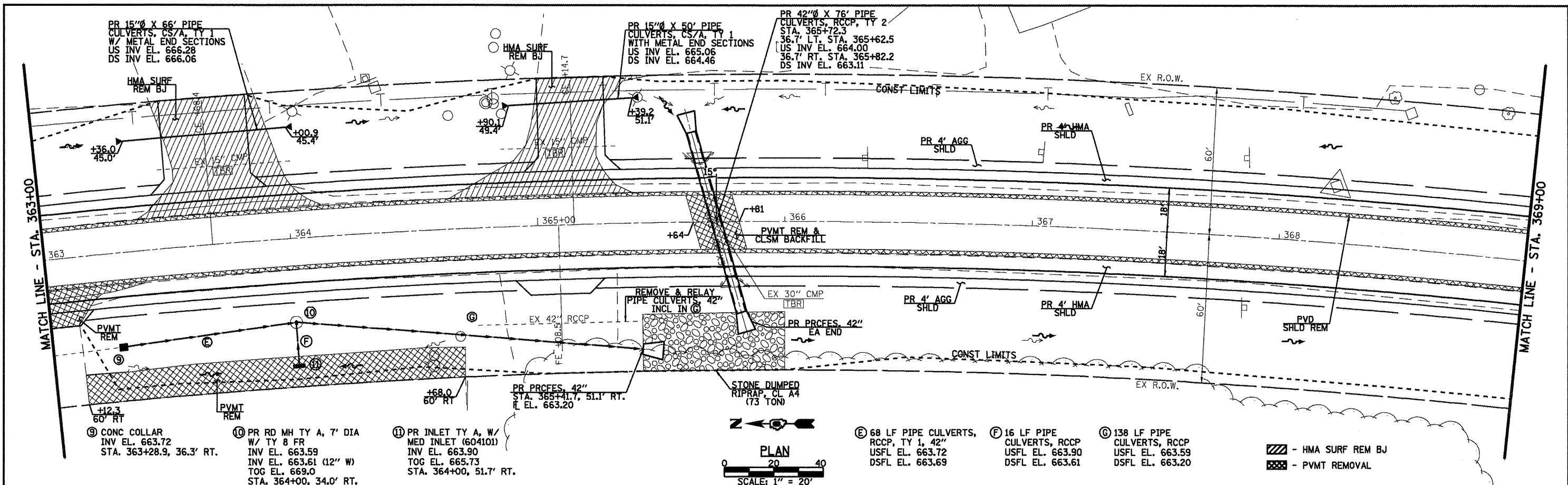
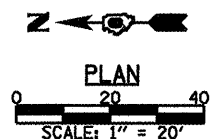


DATE	
BY	
SURVEYED	
PLANNED	
NOTED	
NO.	



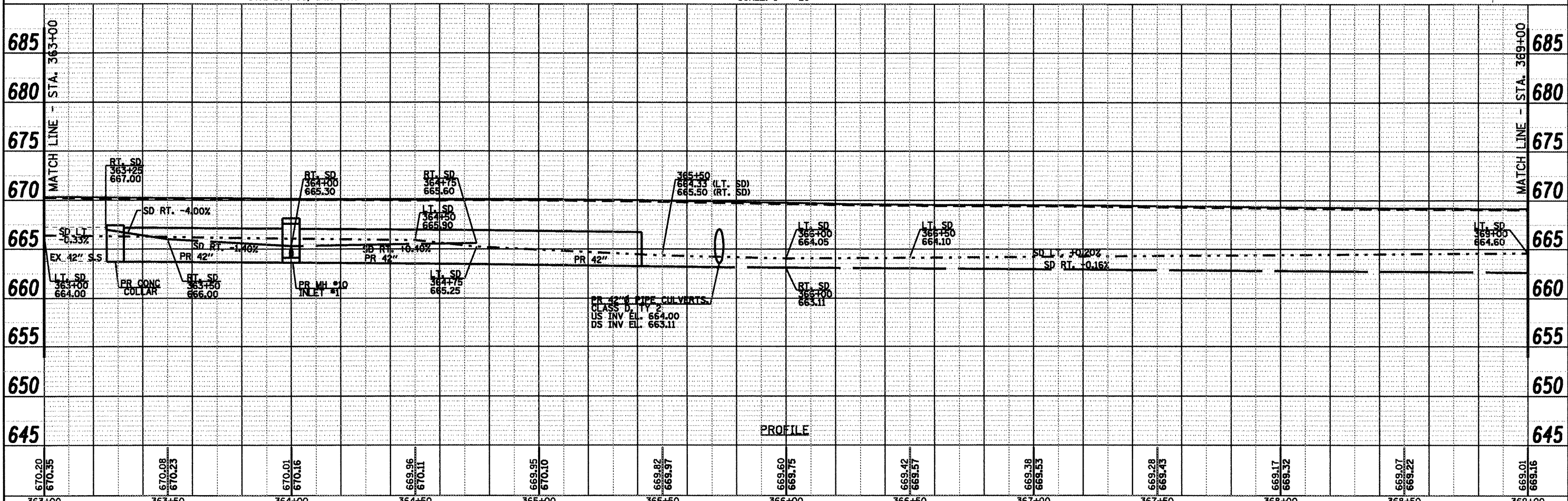
- ⑨ CONC COLLAR
INV EL. 663.72
STA. 363+28.9, 36.3' RT.
- ⑩ PR RD MH TY A, 7' DIA
W/ TY 8 FR
INV EL. 663.59
INV EL. 663.61 (12" W)
TOG EL. 669.0
STA. 364+00, 34.0' RT.
- ⑪ PR INLET TY A, W/
MED INLET (604101)
INV EL. 663.90
TOG EL. 665.73
STA. 364+00, 51.7' RT.



- ⑤ 68 LF PIPE CULVERTS,
RCCP, TY 1, 42"
USFL EL. 663.72
DSFL EL. 663.69
- ⑥ 16 LF PIPE CULVERTS, RCCP
USFL EL. 663.90
DSFL EL. 663.61
- ⑦ 138 LF PIPE CULVERTS, RCCP
USFL EL. 663.59
DSFL EL. 663.20

▨ - HMA SURF REM BJ
▩ - PVMT REMOVAL

DATE	
BY	
SURVEYED	
PLANNED	
NOTED	
NO.	



FILE NAME =	USER NAME = medonievj	DESIGNED -	REVISED -		Allen Henderson & Associates, Inc. Civil and Structural Engineers Springfield, IL 62703 Phone: (217)544-8033 IL Design Firm No. 184-001907	PLAN & PROFILE	F.A.P. RTE.	SECTION	COUNTY	TOTAL SHEETS	SHEET NO.
S:\PROJ ENGR 1 (Nagangard)\Dust Squad\FAP	662 (IL 4) Henderson.pdf\CAAD Sheets\06727	CHECKED -	REVISED -				662	DIW-3,RS-11,CR	MACOUPIN	102	31
PLOT SCALE = 40,0000 / IN.		DRAWN -	REVISED -				CONTRACT NO. 72765				
PLOT DATE = Aug-17-2009 04:05:45PM		CHECKED -	REVISED -				FED. ROAD DIST. NO. ILLINOIS FED. AID PROJECT				