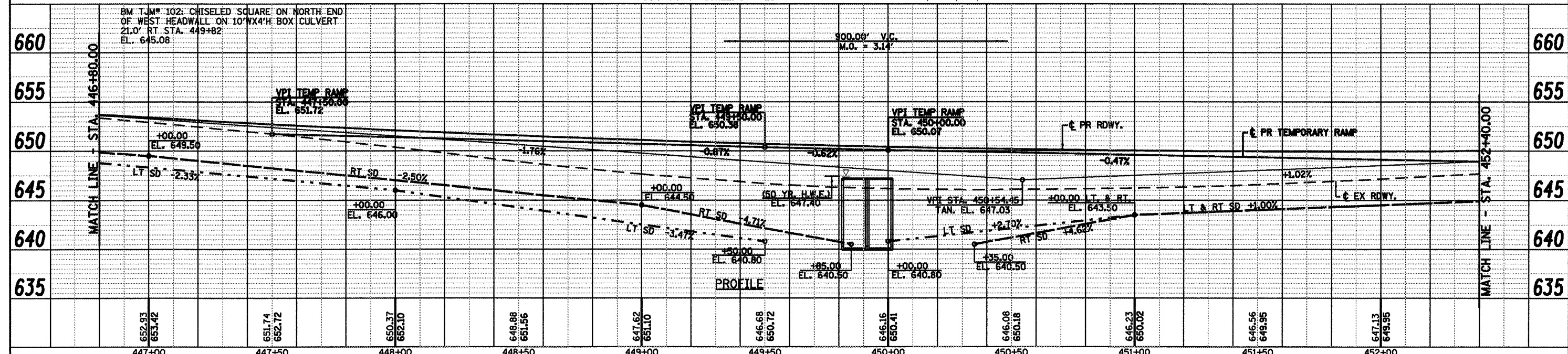
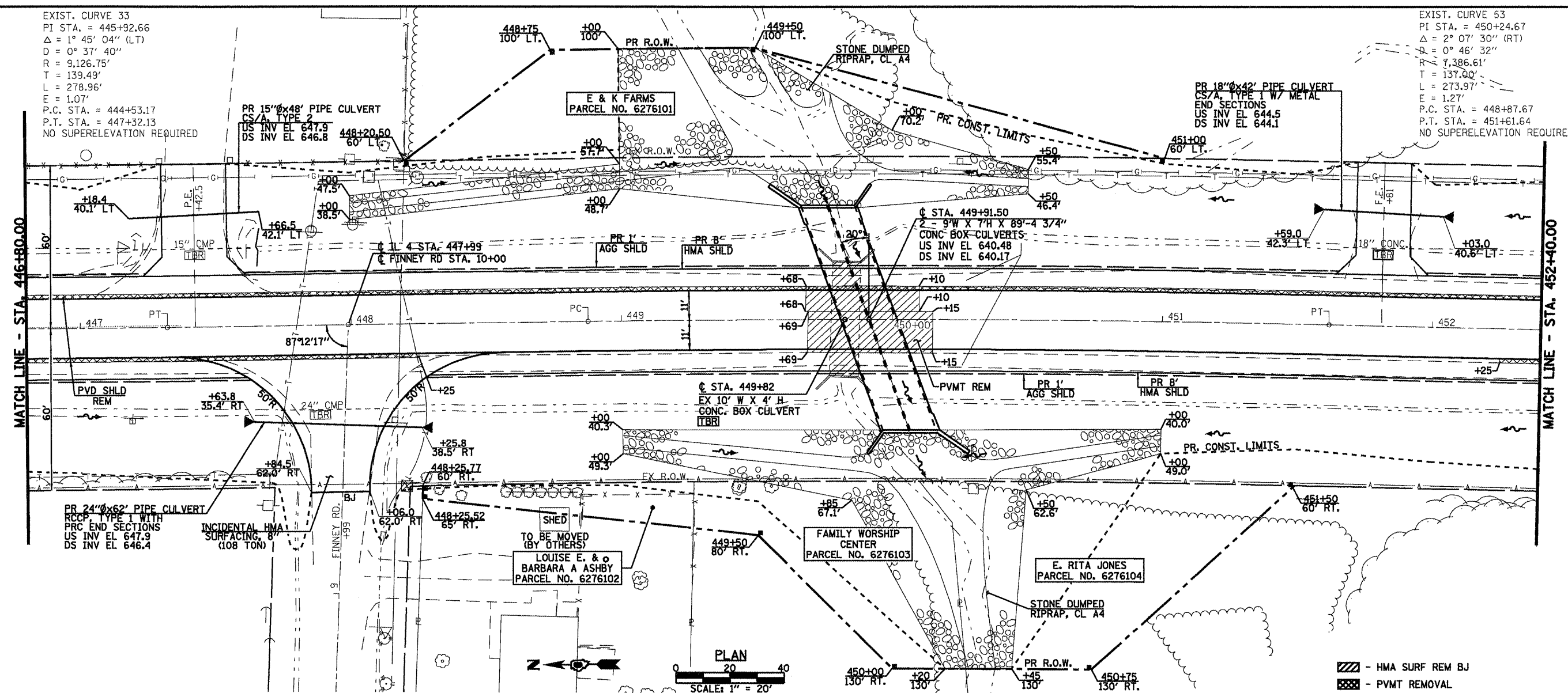


EXIST. CURVE 33
 PI STA. = 445+92.66
 $\Delta = 1^\circ 45' 04''$ (LT)
 $D = 0^\circ 37' 40''$
 $R = 9,126.75'$
 $T = 139.49'$
 $L = 278.96'$
 $E = 1.07'$
 P.C. STA. = 444+53.17
 P.T. STA. = 447+32.13
 NO SUPERELEVATION REQUIRED

EXIST. CURVE 53
 PI STA. = 450+24.67
 $\Delta = 2^\circ 07' 30''$ (RT)
 $D = 0^\circ 46' 32''$
 $R = 7,386.61'$
 $T = 137.00'$
 $L = 273.97'$
 $E = 1.27'$
 P.C. STA. = 448+87.67
 P.T. STA. = 451+61.64
 NO SUPERELEVATION REQUIRED

DATE	
BY	
SURVEYED	
PLOTTED	
CHECKED	
REVISIONS	
NO. DATE	
NO. DATE	
NO. DATE	
NO. DATE	
NO. DATE	

DATE	
BY	
SURVEYED	
PLOTTED	
CHECKED	
REVISIONS	
NO. DATE	
NO. DATE	
NO. DATE	
NO. DATE	
NO. DATE	



FILE NAME =	USER NAME = madonnavj	DESIGNED =	REVISIONS =	<p>Allen Henderson & Associates, Inc. Civil and Structural Engineers Springfield, IL 62703 Phone: (217)544-8033 IL Design Firm No. 184-001907</p>	<p>PLAN & PROFILE</p> <p>SCALE: 1" = 20' SHEET NO. 3 OF 4 SHEETS STA. 446+80.00 TO STA. 452+40.00</p>	F.A.P. RTE. =	SECTION =	COUNTY =	TOTAL SHEETS =	SHEET NO. =
S:\PROJ\ENR 1 (Nagangard)\Dust Squad\FAP	S62 (IL 4) Henderson.pdf\CAAD Sheets\06272	CHECKED =	REVISIONS =			662	DIW-3,RS-11,CR	MACOUPIN	102	37
PLOT SCALE = 48,0000' / IN.		DRAWN =	REVISIONS =			CONTRACT NO. 72765				
PLOT DATE = Aug-17-2009 04:06:02PM		CHECKED =	REVISIONS =			FED. ROAD DIST. NO. ILLINOIS FED. AID PROJECT				