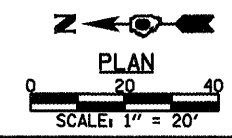
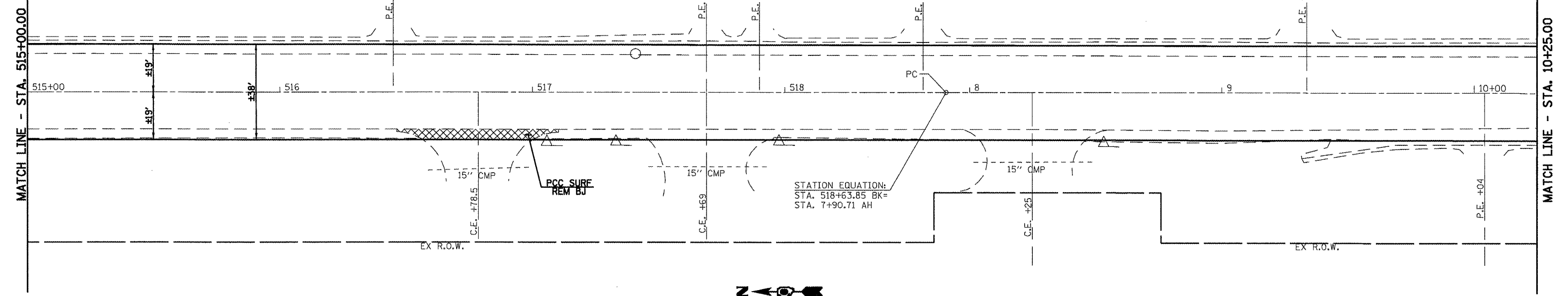
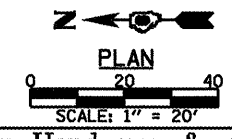
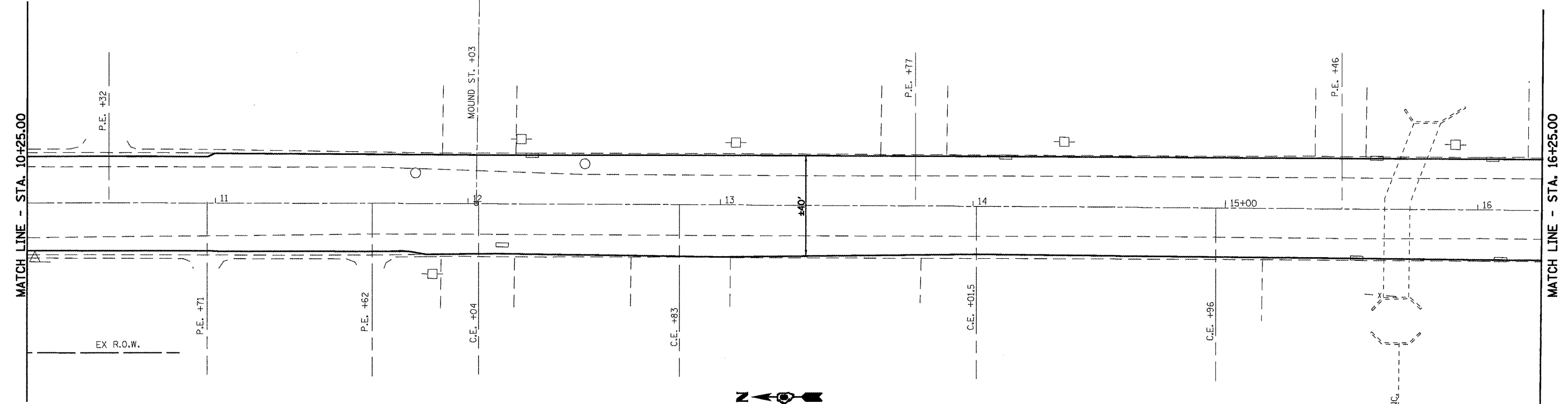


EXIST. CURVE58
 PI STA. =12+74.11
 Δ =0° 28' 33" (RT)
 D =0° 02' 57"
 R =116,392.40'
 T =483.40'
 L =966.79'
 E =1.00'
 e = -----
 T.R. = -----
 S.E. RUN = -----
 P.C. STA. =7+90.71
 P.T. STA. =17+57.51



S.E. RUN = -----
 P.C. STA. =7+90.71
 P.T. STA. =17+57.51



FILE NAME = S:\PROJ ENGR 1 (Negangard)\Dust Squad\VF	USER NAME = medonievj
662 (IL 4) Henderson pdfa\CADD Sheets\067	DESIGNED -
PLOT SCALE = 40.0000' / IN.	CHECKED -
PLOT DATE = Aug-17-2009 04:06:15PM	DATE -

DESIGNED -	REVISED -
CHECKED -	REVISED -
DATE -	REVISED -

Allen Henderson & Associates, Inc.
 Civil and Structural Engineers Springfield, IL.
 62703 Phone: (217)544-8033 IL Design Firm
 No. 184-001907

ROADWAY PLAN
 SCALE: 1" = 20' SHEET NO. 4 OF 6 SHEETS STA. 515+00.00 TO STA. 16+25.00

F.A.P. RTE.	SECTION	COUNTY	TOTAL SHEETS	SHEET NO.
662	DIW-3,RS-11,CR	MACOUPIN	102	42
CONTRACT NO. 72765				
FED. ROAD DIST. NO. ILLINOIS FED. AID PROJECT				