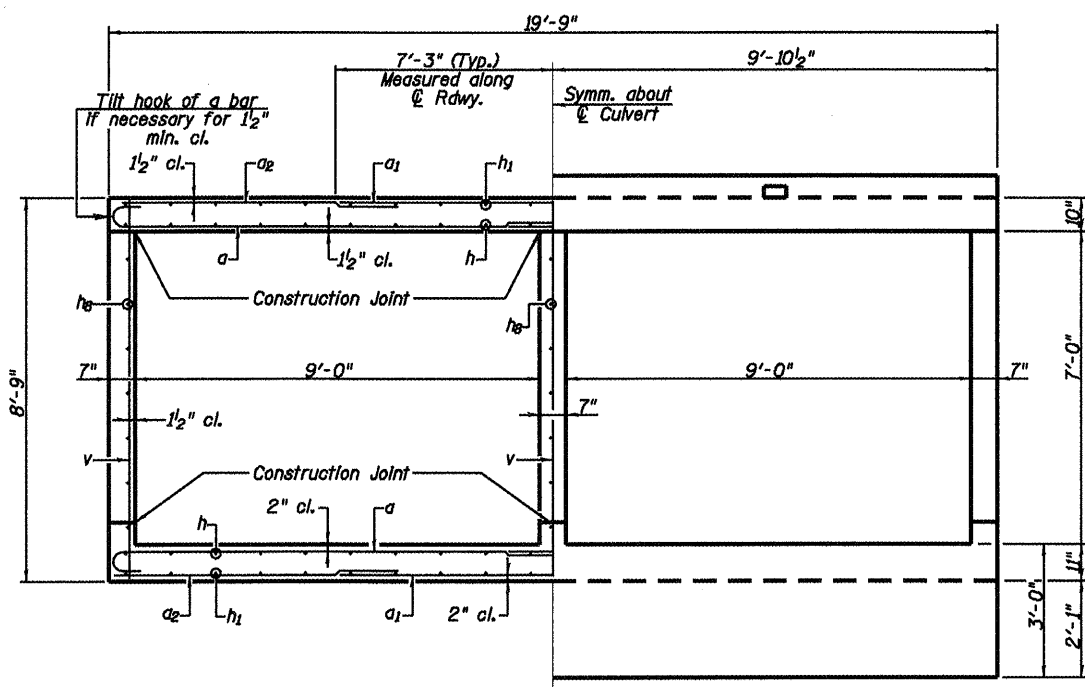


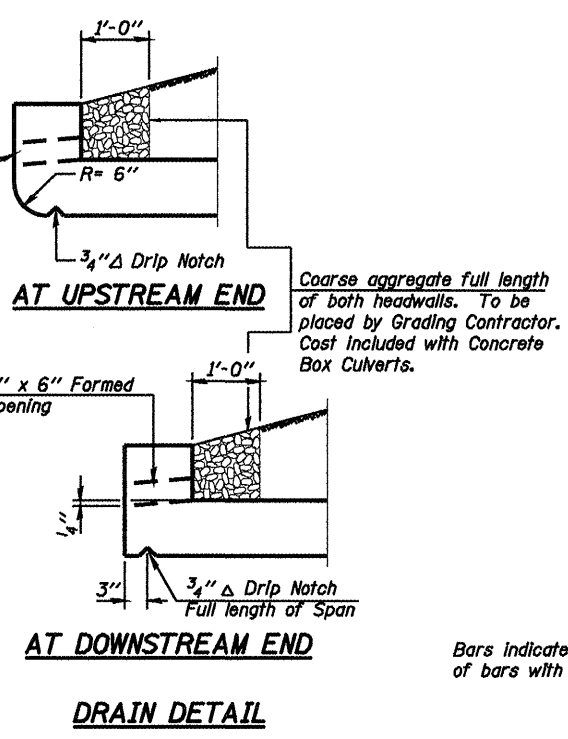
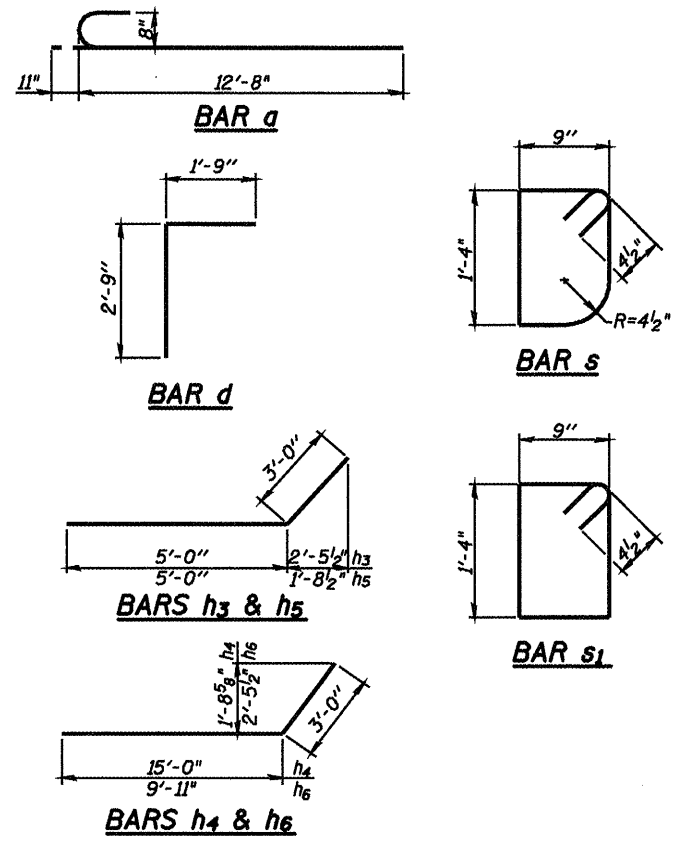
LONGITUDINAL SECTION
 (Dimensions are at Rt. L's to C. Rdwy. at Local Tangent)
 (Looking South)

MIN. BAR LAPS
 #6 bars = 2'-0"



HALF SECTION THRU BARRELS
 (Dimensions are at Rt. L's unless otherwise noted)

HALF END ELEVATION
 (Dimensions are at Rt. L's unless otherwise noted)



BILL OF MATERIAL

Bar	No.	Size	Length	Shape
a	424	#8	13'-7"	C
a1	212	#8	14'-6"	—
a2	214	#5	5'-0"	—
d	60	#4	4'-6"	—
h	160	#5	23'-0"	—
h1	240	#5	16'-6"	—
h2	12	#8	20'-10"	—
h3	26	#8	8'-0"	—
h4	20	#8	18'-0"	—
h5	26	#7	8'-0"	—
h6	20	#7	12'-11"	—
h7	9	#6	20'-10"	—
h8	84	#6	23'-2"	—
s	20	#4	4'-9"	□
s1	40	#4	4'-11"	□
v	328	#4	8'-5"	—
v1	16	#4	11'-3"	—
Concrete Box Culverts			Cu. Yd.	182.3
Reinforcement Bars			Pound	41360

Bars indicated thus 7 x 2 - #6 etc. indicates 7 lines of bars with 2 lengths per line.

**CULVERT DETAILS
 STRUCTURE NO. 059-7101**



Allen Henderson & Associates, Inc.
 Civil and Structural Engineers Springfield, IL.
 62703 Phone: (217)544-8033 IL Design Firm
 No. 184-001907

SHEET NO. 7
 9 SHEETS

F.A.P. RTE.	SECTION	COUNTY	TOTAL SHEETS	SHEET NO.
662	D(W-3,RS-11,CR)	MACOUPIN	102	70
CONTRACT NO. 72765				
FED. ROAD DIST. NO.		ILLINOIS FED. AID PROJECT		