

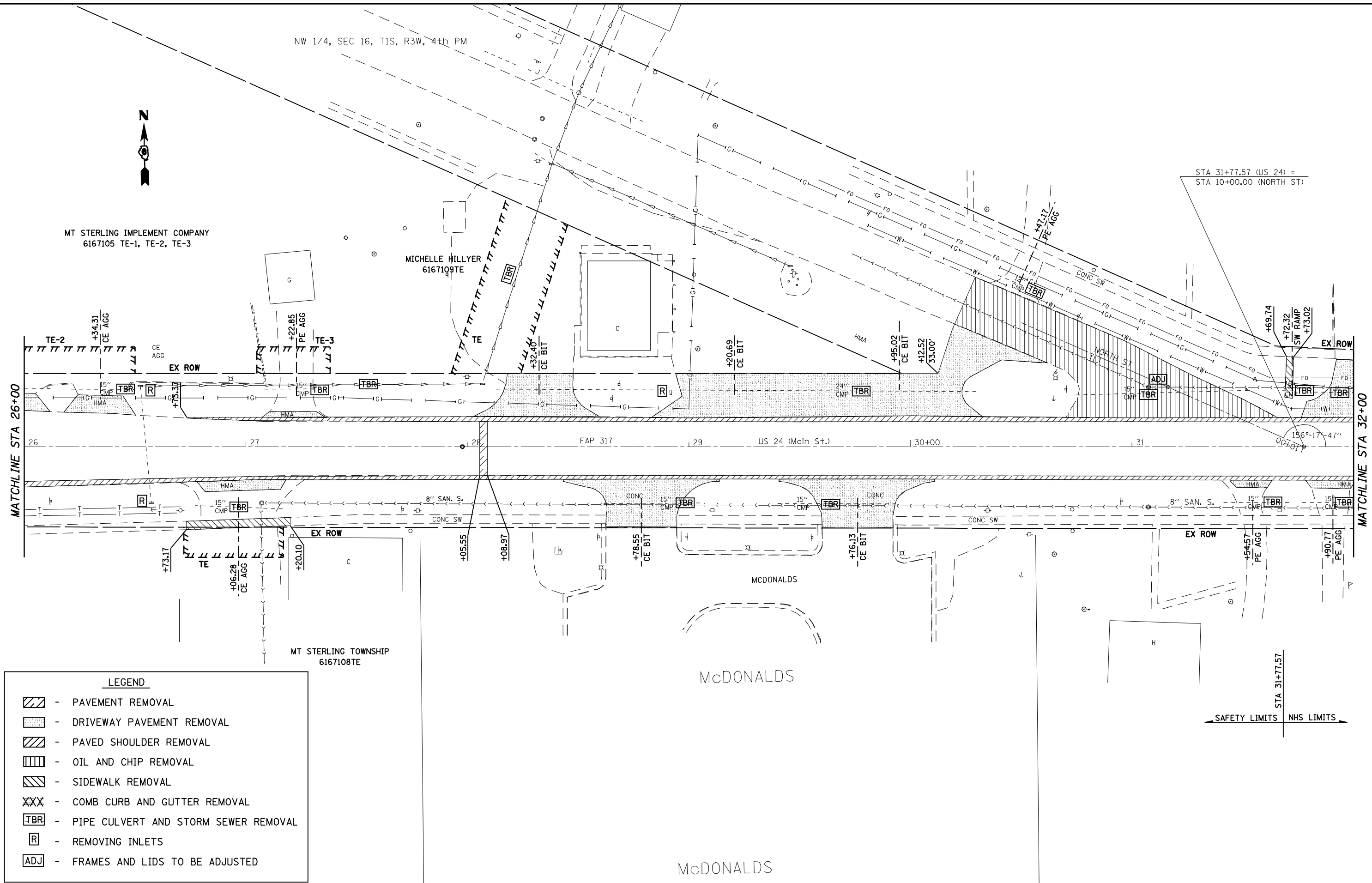
NW 1/4, SEC 16, T1S, R3W, 4th PM



MT STERLING IMPLEMENT COMPANY
6167105 TE-1, TE-2, TE-3

MICHELLE HILLYER
6167109TE

STA 31+77.57 (US 24) =
STA 10+00.00 (NORTH ST)



LEGEND	
	- PAVEMENT REMOVAL
	- DRIVEWAY PAVEMENT REMOVAL
	- PAVED SHOULDER REMOVAL
	- OIL AND CHIP REMOVAL
	- SIDEWALK REMOVAL
	- COMB CURB AND GUTTER REMOVAL
	- PIPE CULVERT AND STORM SEWER REMOVAL
	- REMOVING INLETS
	- FRAMES AND LIDS TO BE ADJUSTED

FILE NAME =	USER NAME = laughlinr1	DESIGNED -	REVISED -
es:\pwork\PWIDOT\LAUGHLINRL\dms20175\672b60-sht-plan.dgn		DRAWN -	REVISED -
		CHECKED -	REVISED -
		DATE -	REVISED -

**STATE OF ILLINOIS
DEPARTMENT OF TRANSPORTATION**

REMOVAL PLAN SHEET

SCALE: 1" = 20' SHEET NO. 4 OF 9 SHEETS STA. 26+00 TO STA. 32+00

F.A.P. RTE.	SECTION	COUNTY	TOTAL SHEETS	SHEET NO.
*	7(W-1,RS-8,N); 9RS-4	BROWN	177	48
CONTRACT NO. 72B60				
FED. ROAD DIST. NO. ILLINOIS FED. AID PROJECT				

* FAP 717 (11C 24) & 550 (11 99)