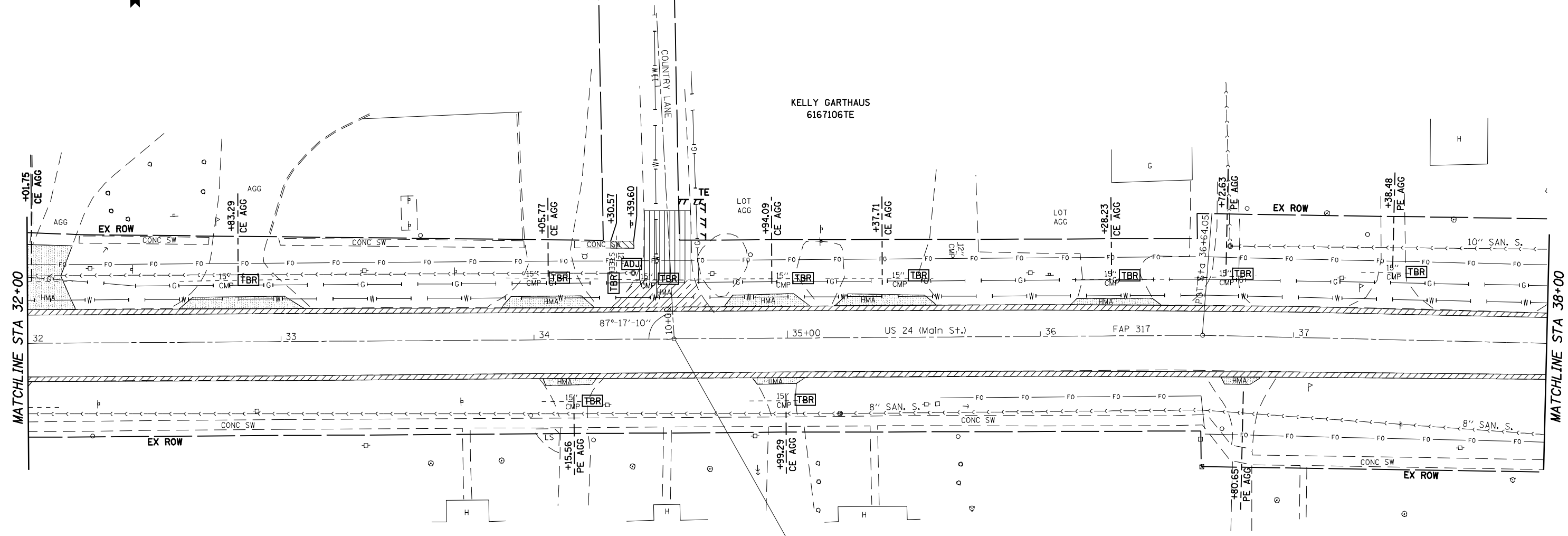


NW 1/4, SEC 16, T1S, R3W, 4th PM



LEGEND	
	PAVEMENT REMOVAL
	DRIVEWAY PAVEMENT REMOVAL
	PAVED SHOULDER REMOVAL
	OIL AND CHIP REMOVAL
	SIDEWALK REMOVAL
	COMB CURB AND GUTTER REMOVAL
	PIPE CULVERT AND STORM SEWER REMOVAL
	REMOVING INLETS
	FRAMES AND LIDS TO BE ADJUSTED

FILE NAME =	USER NAME = laughlinr1	DESIGNED -	REVISED -
et:\pwork\PWIDOT\LAUGHLINRL\dms20175\672b60-sht-plan.dgn		DRAWN -	REVISED -
PLOT SCALE = 40.0000' / IN.		CHECKED -	REVISED -
PLOT DATE = Oct-07-2009 08:52:12AM		DATE -	REVISED -

**STATE OF ILLINOIS  
DEPARTMENT OF TRANSPORTATION**

<b>REMOVAL PLAN SHEET</b>			
SCALE: 1" = 20'	SHEET NO. 5 OF 9 SHEETS	STA. 32+00	TO STA. 38+00

F.A.P. RTE.	SECTION	COUNTY	TOTAL SHEETS	SHEET NO.
*	7(W-1,RS-8,N); 9RS-4	BROWN	177	49
CONTRACT NO. 72B60				
FED. ROAD DIST. NO. ILLINOIS FED. AID PROJECT				

\* FAP 717 (11C 24) & 550 (11 99)