

**TEMPORARY SIGNAL NOTES:**

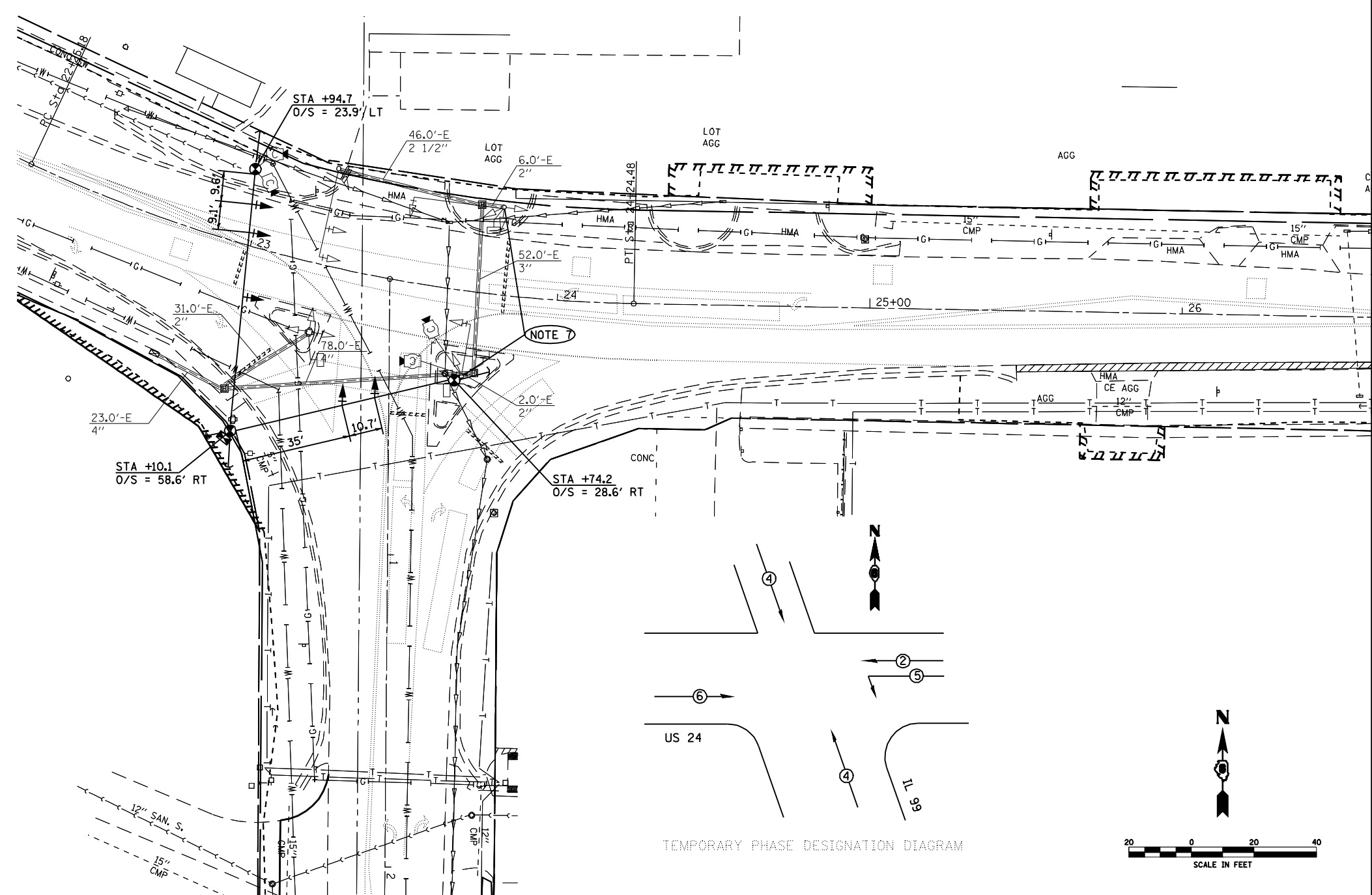
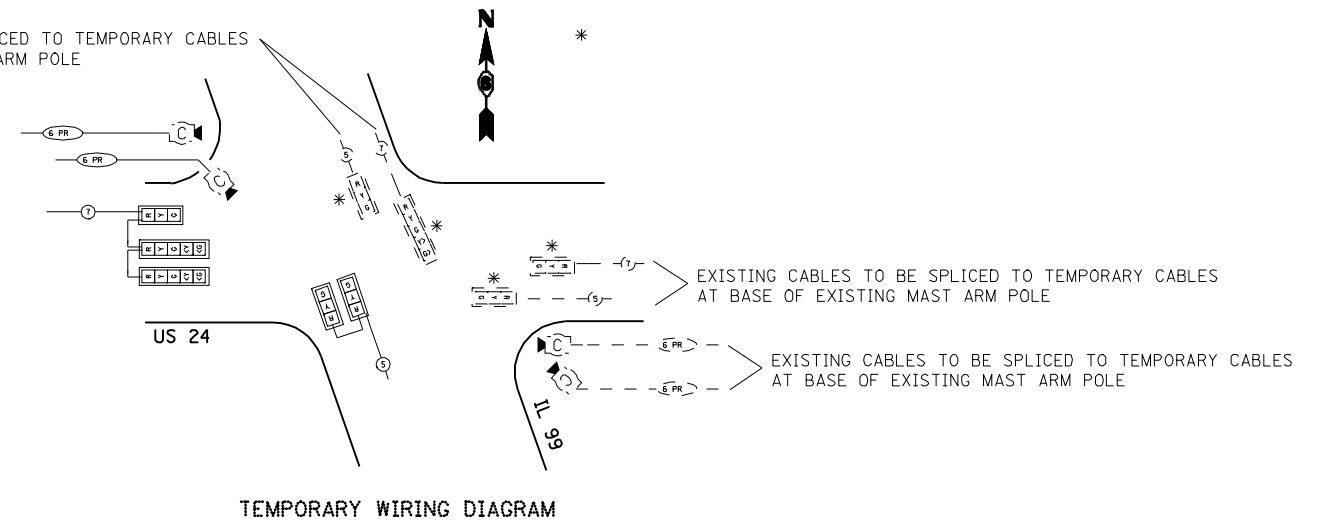
1. TEMPORARY CABINET TO BE FURNISHED BY CONTRACTOR AND EQUIPPED WITH VIDEO DETECTION INTERFACE CABLES.
2. TEMPORARY SIGNALS SHALL BE OPERATIONAL PRIOR TO REMOVAL OF EXISTING SIGNALS.
3. POLES SHALL BE GUYED OR ANCHORED TO THE SATISFACTION OF THE ENGINEER. ANY ADJUSTMENTS SHALL BE CONSIDERED PART OF THE PAY ITEM FOR TEMPORARY TRAFFIC SIGNAL INSTALLATION.
4. EXISTING VIDEO DETECTION SYSTEM SHALL BE UTILIZED TO PROVIDE DETECTION FOR THE TEMPORARY CONTROLLER. THE CAMERAS AND CONTROL UNIT SHALL BE RELOCATED TO THE TEMPORARY TRAFFIC SIGNAL INSTALLATION AND TEMPORARY CABINET. THE CAMERAS AND CONTROL UNIT SHALL BE RELOCATED AGAIN TO THE PERMANENT SIGNAL INSTALLATION AND PERMANENT CABINET. ALL ADJUSTMENTS AND RELOCATION OF VIDEO COMPONENTS ARE TO BE INCLUDED IN THE TEMPORARY TRAFFIC SIGNAL INSTALLATION COST.
5. POLES USED FOR TEMPORARY SIGNAL INSTALLATION SHALL PROVIDE FOR A MINIMUM 35 FT. MOUNTING HEIGHT FOR THE VIDEO CAMERAS.
6. PROPOSED SERVICE TO BE UTILIZED FOR THE TEMPORARY SIGNAL INSTALLATION
7. TEMPORARY CABLES SHALL BE AERIALY STRUNG TO EXISTING SOUTHEAST CORNER MAST ARM ASSEMBLY TO PROVIDE POWER TO EXISTING SIGNAL HEADS TO REMAIN IN OPERATION. TEMPORARY CABLES SHALL BE INSTALLED IN EXISTING CONDUITS TO EXISTING MAST ARM ASSEMBLY IN NORTHEAST CORNER TO PROVIDE POWER TO EXISTING SIGNAL HEADS.
8. ELECTRIC SERVICE TO THE SIGNALS MAY BE DISCONNECTED IN ORDER TO CONVERT THE EXISTING SIGNALS TO THE TEMPORARY SIGNAL SYSTEM. ELECTRIC SERVICE TO THE SIGNALS MAY NOT BE LEFT DISCONNECTED OVERNIGHT.
9. TEMPORARY CABLES MAY BE SPLICED TO EXISTING CABLES AT THE BASE OF EXISTING MAST ARM ASSEMBLIES TO REMAIN IN PLACE AND BE USED AS PART OF THE TEMPORARY SIGNAL INSTALLATION.

**REMOVE EXISTING TRAFFIC SIGNAL EQUIPMENT CONSISTS OF**

- |   |      |                            |
|---|------|----------------------------|
| 1 | EACH | MAST ARM ASSEMBLY          |
| 1 | EACH | TRAFFIC SIGNAL POST        |
| 4 | EACH | SIGNAL HEAD ASSEMBLY       |
| 1 | EACH | PEDESTRIAN PUSHBUTTON POST |

REMOVED EQUIPMENT SHALL BECOME THE PROPERTY OF THE CONTRACTOR

EXISTING CABLES TO BE SPLICED TO TEMPORARY CABLES AT BASE OF EXISTING MAST ARM POLE



FILE NAME =	USER NAME = laughlinr1	DESIGNED -	REVISED -	<b>STATE OF ILLINOIS DEPARTMENT OF TRANSPORTATION</b>	<b>TEMPORARY TRAFFIC SIGNALS</b>			F.A.P. RTE.	SECTION	COUNTY	TOTAL SHEETS	SHEET NO.	
et\pwork\PWIDOT\LAUGHLINRL\dms20188\0672860-sh-t-TS.dgn		DRAWN -	REVISED -		SCALE: 1" = 20'	SHEET NO. 1 OF 6 SHEETS	STA.	TO STA.	*	7(W-1,RS-8,N) 9RS-4	BROWN	177	102
PLOT SCALE = 40.0000 ' / IN.		CHECKED -	REVISED -		CONTRACT NO. 72B60								
PLOT DATE = Oct-07-2009 10:36:11AM		DATE -	REVISED -		ILLINOIS FED. AID PROJECT								

\* FAP 717 (11C 24) & 550 (11 99)