

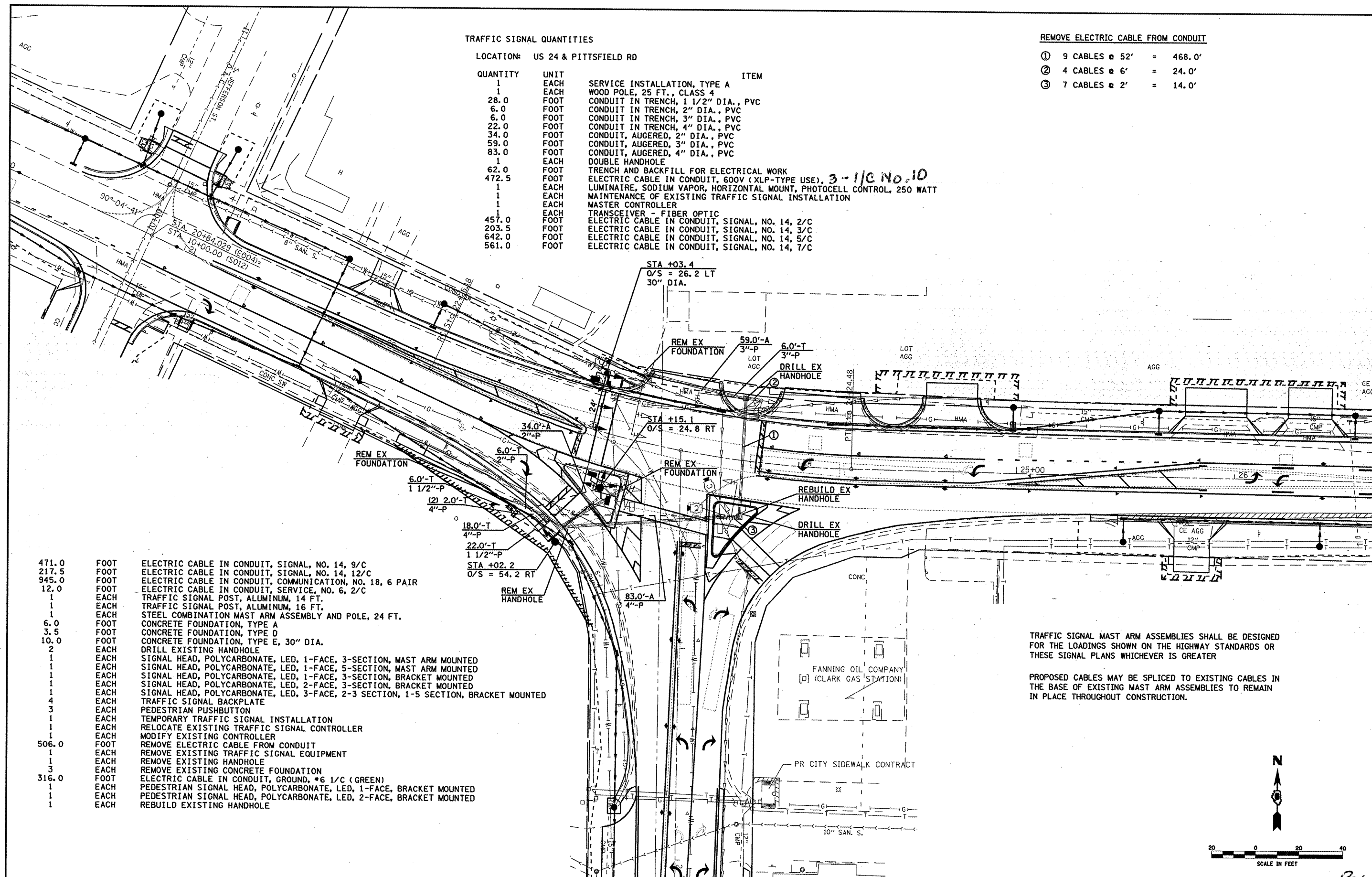
TRAFFIC SIGNAL QUANTITIES

LOCATION: US 24 & PITTSFIELD RD

| QUANTITY | UNIT | SERVICE INSTALLATION, TYPE A ITEM                                      |
|----------|------|--|
| 1        | EACH | WOOD POLE, 25 FT., CLASS 4   |
| 28.0     | FOOT | CONDUIT IN TRENCH, 1 1/2" DIA., PVC                                    |
| 6.0      | FOOT | CONDUIT IN TRENCH, 2" DIA., PVC  |
| 6.0      | FOOT | CONDUIT IN TRENCH, 3" DIA., PVC  |
| 22.0     | FOOT | CONDUIT IN TRENCH, 4" DIA., PVC  |
| 34.0     | FOOT | CONDUIT, AUGERED, 2" DIA., PVC   |
| 59.0     | FOOT | CONDUIT, AUGERED, 3" DIA., PVC   |
| 83.0     | FOOT | CONDUIT, AUGERED, 4" DIA., PVC   |
| 1        | EACH | DOUBLE HANDHOLE  |
| 62.0     | FOOT | TRENCH AND BACKFILL FOR ELECTRICAL WORK                                |
| 472.5    | FOOT | ELECTRIC CABLE IN CONDUIT, 600V (XLP-TYPE USE), 3-1/C No. 10           |
| 1        | EACH | LUMINAIRE, SODIUM VAPOR, HORIZONTAL MOUNT, PHOTOCELL CONTROL, 250 WATT |
| 1        | EACH | MAINTENANCE OF EXISTING TRAFFIC SIGNAL INSTALLATION                    |
| 1        | EACH | MASTER CONTROLLER  |
| 1        | EACH | TRANSCEIVER - FIBER OPTIC  |
| 457.0    | FOOT | ELECTRIC CABLE IN CONDUIT, SIGNAL, NO. 14, 2/C                         |
| 203.5    | FOOT | ELECTRIC CABLE IN CONDUIT, SIGNAL, NO. 14, 3/C                         |
| 642.0    | FOOT | ELECTRIC CABLE IN CONDUIT, SIGNAL, NO. 14, 5/C                         |
| 561.0    | FOOT | ELECTRIC CABLE IN CONDUIT, SIGNAL, NO. 14, 7/C                         |

REMOVE ELECTRIC CABLE FROM CONDUIT

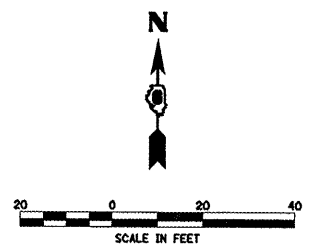
|   |                |          |
|---|----------------|----------|
| ① | 9 CABLES @ 52' | = 468.0' |
| ② | 4 CABLES @ 6'  | = 24.0'  |
| ③ | 7 CABLES @ 2'  | = 14.0'  |



|       |      |  |
|-------|------|--|
| 471.0 | FOOT | ELECTRIC CABLE IN CONDUIT, SIGNAL, NO. 14, 9/C                                     |
| 217.5 | FOOT | ELECTRIC CABLE IN CONDUIT, SIGNAL, NO. 14, 12/C                                    |
| 945.0 | FOOT | ELECTRIC CABLE IN CONDUIT, COMMUNICATION, NO. 18, 6 PAIR                           |
| 12.0  | FOOT | ELECTRIC CABLE IN CONDUIT, SERVICE, NO. 6, 2/C                                     |
| 1     | EACH | TRAFFIC SIGNAL POST, ALUMINUM, 14 FT.  |
| 1     | EACH | TRAFFIC SIGNAL POST, ALUMINUM, 16 FT.  |
| 1     | EACH | STEEL COMBINATION MAST ARM ASSEMBLY AND POLE, 24 FT.                               |
| 6.0   | FOOT | CONCRETE FOUNDATION, TYPE A  |
| 3.5   | FOOT | CONCRETE FOUNDATION, TYPE D  |
| 10.0  | FOOT | CONCRETE FOUNDATION, TYPE E, 30" DIA.  |
| 2     | EACH | DRILL EXISTING HANDHOLE  |
| 1     | EACH | SIGNAL HEAD, POLYCARBONATE, LED, 1-FACE, 3-SECTION, MAST ARM MOUNTED               |
| 1     | EACH | SIGNAL HEAD, POLYCARBONATE, LED, 1-FACE, 5-SECTION, MAST ARM MOUNTED               |
| 1     | EACH | SIGNAL HEAD, POLYCARBONATE, LED, 1-FACE, 3-SECTION, BRACKET MOUNTED                |
| 1     | EACH | SIGNAL HEAD, POLYCARBONATE, LED, 2-FACE, 3-SECTION, BRACKET MOUNTED                |
| 1     | EACH | SIGNAL HEAD, POLYCARBONATE, LED, 3-FACE, 2-3 SECTION, 1-5 SECTION, BRACKET MOUNTED |
| 4     | EACH | TRAFFIC SIGNAL BACKPLATE   |
| 3     | EACH | PEDESTRIAN PUSHBUTTON  |
| 1     | EACH | TEMPORARY TRAFFIC SIGNAL INSTALLATION  |
| 1     | EACH | RELOCATE EXISTING TRAFFIC SIGNAL CONTROLLER  |
| 1     | EACH | MODIFY EXISTING CONTROLLER   |
| 506.0 | FOOT | REMOVE ELECTRIC CABLE FROM CONDUIT   |
| 1     | EACH | REMOVE EXISTING TRAFFIC SIGNAL EQUIPMENT   |
| 1     | EACH | REMOVE EXISTING HANDHOLE   |
| 3     | EACH | REMOVE EXISTING CONCRETE FOUNDATION  |
| 316.0 | FOOT | ELECTRIC CABLE IN CONDUIT, GROUND, #6 1/C (GREEN)                                  |
| 1     | EACH | PEDESTRIAN SIGNAL HEAD, POLYCARBONATE, LED, 1-FACE, BRACKET MOUNTED                |
| 1     | EACH | PEDESTRIAN SIGNAL HEAD, POLYCARBONATE, LED, 2-FACE, BRACKET MOUNTED                |
| 1     | EACH | REBUILD EXISTING HANDHOLE  |

TRAFFIC SIGNAL MAST ARM ASSEMBLIES SHALL BE DESIGNED FOR THE LOADINGS SHOWN ON THE HIGHWAY STANDARDS OR THESE SIGNAL PLANS WHICHEVER IS GREATER

PROPOSED CABLES MAY BE SPliced TO EXISTING CABLES IN THE BASE OF EXISTING MAST ARM ASSEMBLIES TO REMAIN IN PLACE THROUGHOUT CONSTRUCTION.



|                                    |                             |            |           |   |                                 |                         |         |              |              |           |
|------------------------------------|-----------------------------|------------|-----------|---|---------------------------------|-------------------------|---------|--------------|--------------|-----------|
| FILE NAME *                        | USER NAME = laughlinr1      | DESIGNED - | REVISED - | <b>STATE OF ILLINOIS<br/>DEPARTMENT OF TRANSPORTATION</b> | <b>PROPOSED TRAFFIC SIGNALS</b> | F.A.P. RTE.             | SECTION | COUNTY       | TOTAL SHEETS | SHEET NO. |
| 72860-sh1-TS.dgn                   | PLOT SCALE = 40.0000' / IN. | DRAWN -    | REVISED - |   |                                 | 7(W-1,RS-8,N); 9RS-4    | BROWN   | 177          | 104          |           |
| PLOT DATE = Oct-07-2009 10:37:27AM | DATE -                      | CHECKED -  | REVISED - |   |                                 | CONTRACT NO. 72860      |         |              |              |           |
| SCALE: 1" = 20'                    |                             |            |           |   |                                 | SHEET NO. 3 OF 6 SHEETS |         | STA. TO STA. |              |           |

ILLINOIS FED. AID PROJECT