

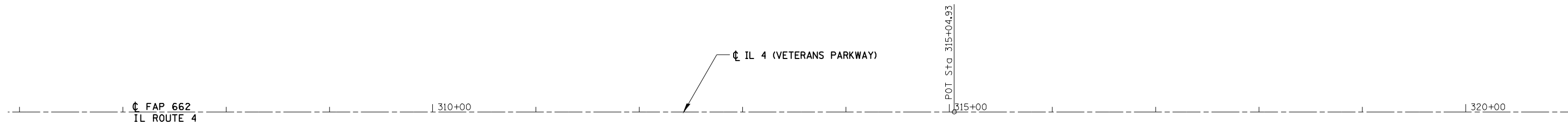
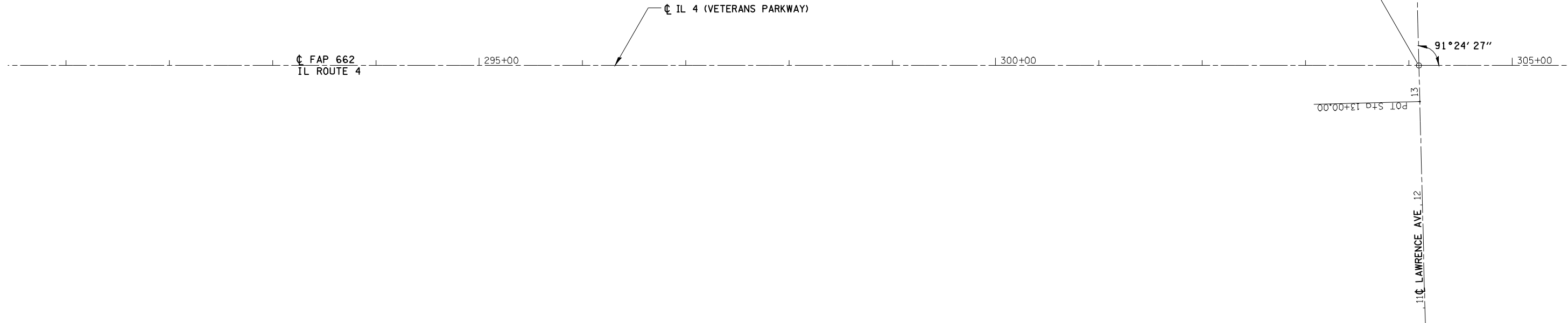
BM 501: SET CHISELED SQUARES IN THE SW CORNER OF SOUTH MAST ARM, EAST OF CL VETERANS PARKWAY AT LAWRENCE AVE. ELEV. 597.61

BM 500: CHISELED SQUARE IN CENTER OF EAST CONCRETE HDWL. NORTH OF OLD JACKSONVILLE RD/MONROE ST. STA 320+22. ELEV. 603.162

BM 502: SET CHISELED SQUARES AT BACK OF CONCRETE DITCH, STA 292+60. BETWEEN TWO DROP INLETS. ELEV. 589.37

BM 503: SET CHISELED SQUARES IN NE CORNER OF THE SOUTH MAST ARM EAST OF CL VETERANS PARKWAY AT WASHINGTON ST. ELEV. 593.28

STA 304+04.31 (IL 4/VETERANS PARKWAY) =
STA 13+35.00 (LAWRENCE AVE)



COORDINATE DATA:

P. O. T.	STA. 315+04.93	NORTH	1, 138, 501.25
		EAST	2, 425, 880.88



JOB = 2200.4
FILE NAME = d672B89-sh1-atb.dgn
PLOT SCALE = 100.0000' / IN.
PLOT DATE = Oct-29-2009 11:33:22AM

DESIGNED - NAK
DRAWN - AJH
CHECKED - NAK
DATE - 10/15/2009

REVISED -
REVISED -
REVISED -
REVISED -

**STATE OF ILLINOIS
DEPARTMENT OF TRANSPORTATION**

IL 4 (VETERANS PARKWAY) ALIGNMENT

SCALE: SHEET NO. OF SHEETS STA. TO STA.

F.A.S. RTE.	SECTION	COUNTY	TOTAL SHEETS	SHEET NO.
662	(2-1-2, 2-2) RS, TS-6	SANGAMON	244	51
CONTRACT NO. 72B99				
FED. ROAD DIST. NO. ILLINOIS FED. AID PROJECT				