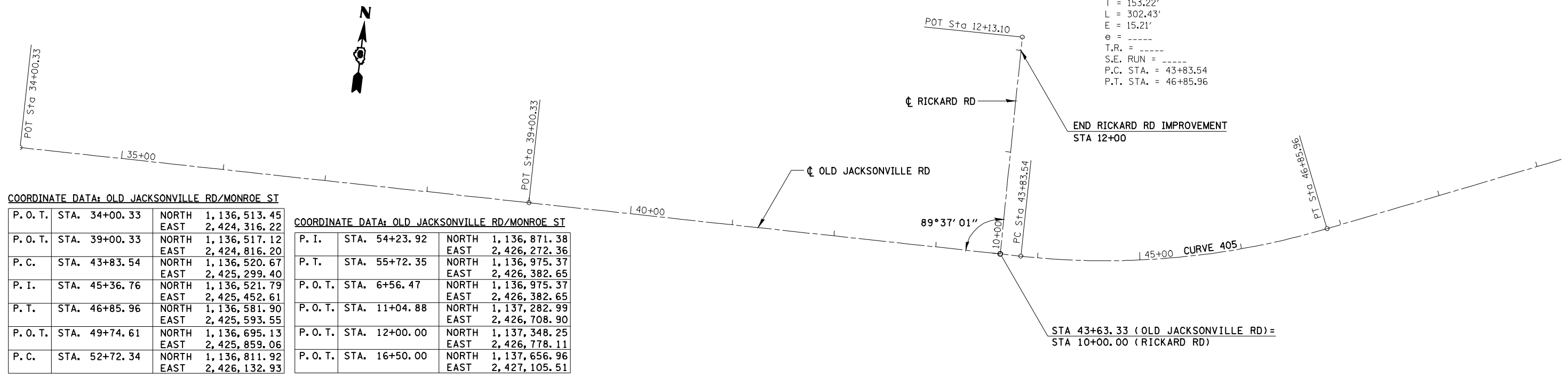


COORDINATE DATA: RICKARD RD

P. O. T.	STA. 10+00.00	NORTH	1, 136, 520.52
		EAST	2, 425, 279.19
P. O. T.	STA. 12+13.10	NORTH	1, 136, 733.60
		EAST	2, 424, 276.21

EXIST. CURVE 405
 PI STA. = 45+36.76
 $\Delta = 22^\circ 40' 33''$ (LT)
 D = 7° 29' 52"
 R = 764.16'
 T = 153.22'
 L = 302.43'
 E = 15.21'
 e = -----
 T.R. = -----
 S.E. RUN = -----
 P.C. STA. = 43+83.54
 P.T. STA. = 46+85.96



COORDINATE DATA: OLD JACKSONVILLE RD/MONROE ST

P. O. T.	STA. 34+00.33	NORTH	1, 136, 513.45
		EAST	2, 424, 316.22
P. O. T.	STA. 39+00.33	NORTH	1, 136, 517.12
		EAST	2, 424, 816.20
P. C.	STA. 43+83.54	NORTH	1, 136, 520.67
		EAST	2, 425, 299.40
P. I.	STA. 45+36.76	NORTH	1, 136, 521.79
		EAST	2, 425, 452.61
P. T.	STA. 46+85.96	NORTH	1, 136, 581.90
		EAST	2, 425, 593.55
P. O. T.	STA. 49+74.61	NORTH	1, 136, 695.13
		EAST	2, 425, 859.06
P. C.	STA. 52+72.34	NORTH	1, 136, 811.92
		EAST	2, 426, 132.93

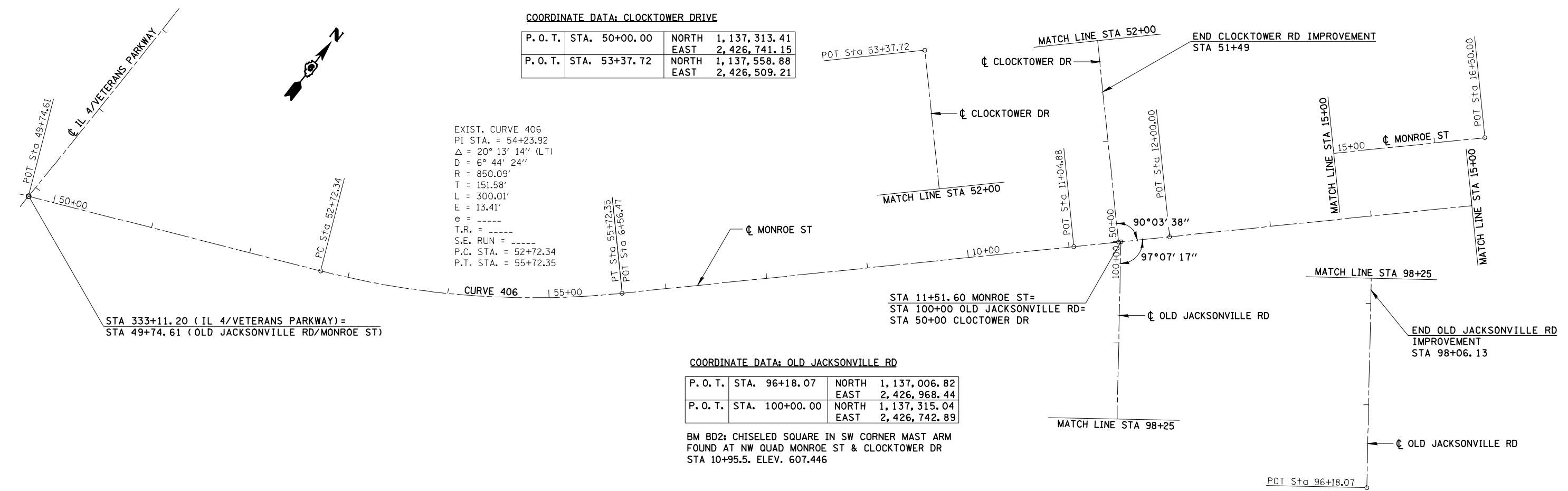
COORDINATE DATA: OLD JACKSONVILLE RD/MONROE ST

P. I.	STA. 54+23.92	NORTH	1, 136, 871.38
		EAST	2, 426, 272.36
P. T.	STA. 55+72.35	NORTH	1, 136, 975.37
		EAST	2, 426, 382.65
P. O. T.	STA. 6+56.47	NORTH	1, 136, 975.37
		EAST	2, 426, 382.65
P. O. T.	STA. 11+04.88	NORTH	1, 137, 282.99
		EAST	2, 426, 708.90
P. O. T.	STA. 12+00.00	NORTH	1, 137, 348.25
		EAST	2, 426, 778.11
P. O. T.	STA. 16+50.00	NORTH	1, 137, 656.96
		EAST	2, 427, 105.51

COORDINATE DATA: CLOCKTOWER DRIVE

P. O. T.	STA. 50+00.00	NORTH	1, 137, 313.41
		EAST	2, 426, 741.15
P. O. T.	STA. 53+37.72	NORTH	1, 137, 558.88
		EAST	2, 426, 509.21

EXIST. CURVE 406
 PI STA. = 54+23.92
 $\Delta = 20^\circ 13' 14''$ (LT)
 D = 6° 44' 24"
 R = 850.09'
 T = 151.58'
 L = 300.01'
 E = 13.41'
 e = -----
 T.R. = -----
 S.E. RUN = -----
 P.C. STA. = 52+72.34
 P.T. STA. = 55+72.35



COORDINATE DATA: OLD JACKSONVILLE RD

P. O. T.	STA. 96+18.07	NORTH	1, 137, 006.82
		EAST	2, 426, 968.44
P. O. T.	STA. 100+00.00	NORTH	1, 137, 315.04
		EAST	2, 426, 742.89

BM BD2: CHISELED SQUARE IN SW CORNER MAST ARM
 FOUND AT NW QUAD MONROE ST & CLOCKTOWER DR
 STA 10+95.5. ELEV. 607.446



JOB = 2200.4
 FILE NAME = d672889-shr-atb.dgn
 PLOT SCALE = 100.0000' / IN.
 PLOT DATE = Oct-29-2009 11:33:33AM

DESIGNED - NAK
 DRAWN - AJH
 CHECKED - NAK
 DATE - 10/15/2009

REVISED -
 REVISED -
 REVISED -
 REVISED -

STATE OF ILLINOIS
 DEPARTMENT OF TRANSPORTATION

IL 4 (VETERANS PARKWAY) ALIGNMENT

SCALE: SHEET NO. OF SHEETS STA. TO STA.

F.A.S. RTE.	SECTION	COUNTY	TOTAL SHEETS	SHEET NO.
662	(2-1-2, 2-2) RS, TS-6	SANGAMON	244	54
CONTRACT NO. 72B99				
FED. ROAD DIST. NO. ILLINOIS FED. AID PROJECT				