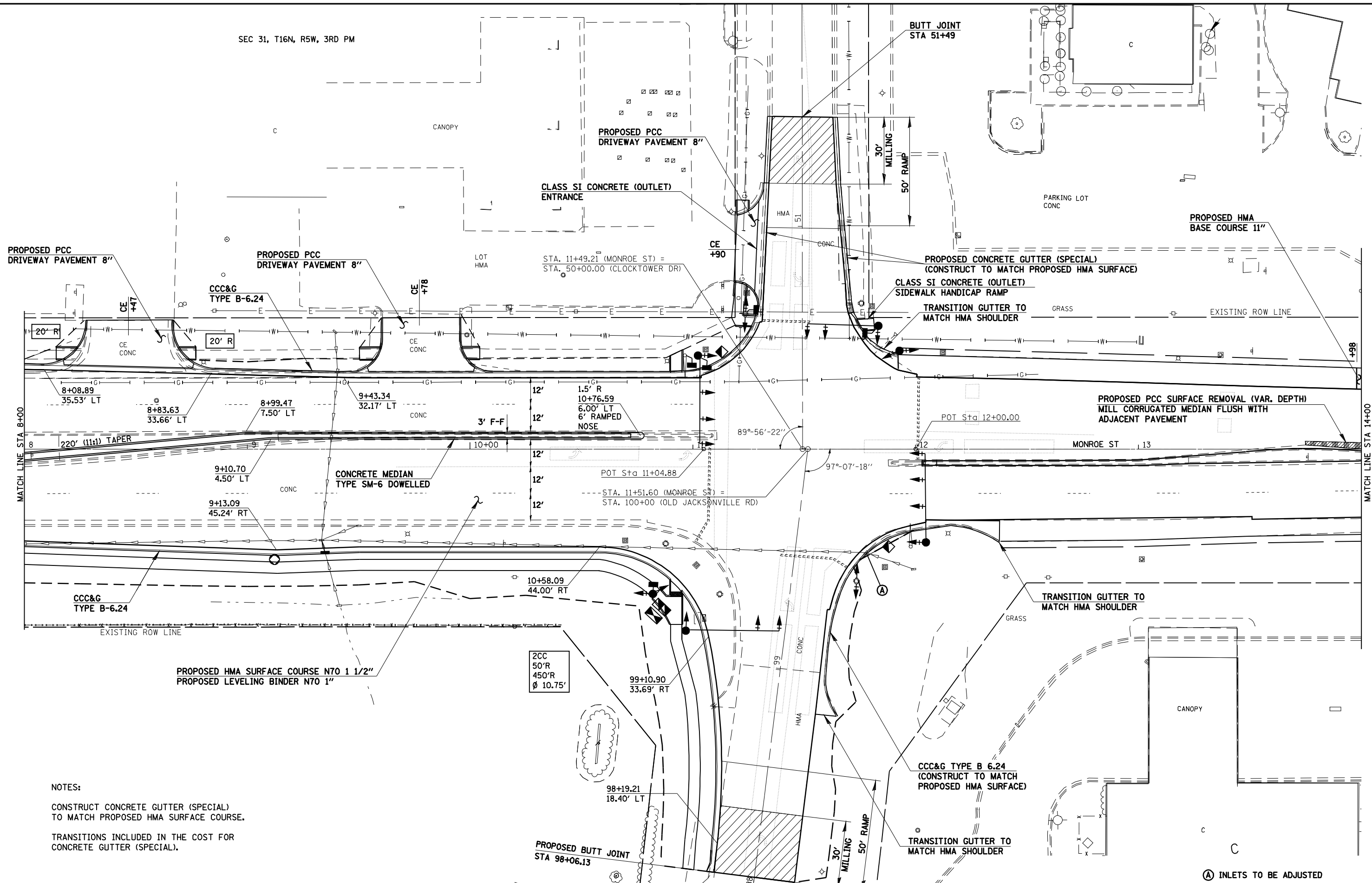


SEC 31, T16N, R5W, 3RD PM



PROPOSED PCC DRIVEWAY PAVEMENT 8"

PROPOSED PCC DRIVEWAY PAVEMENT 8"

PROPOSED PCC DRIVEWAY PAVEMENT 8"

CLASS SI CONCRETE (OUTLET) ENTRANCE

BUTT JOINT STA 51+49

PROPOSED HMA BASE COURSE 11"

PROPOSED CONCRETE GUTTER (SPECIAL) (CONSTRUCT TO MATCH PROPOSED HMA SURFACE)

CLASS SI CONCRETE (OUTLET) SIDEWALK HANDICAP RAMP

TRANSITION GUTTER TO MATCH HMA SHOULDER

PROPOSED PCC SURFACE REMOVAL (VAR. DEPTH) MILL CORRUGATED MEDIAN FLUSH WITH ADJACENT PAVEMENT

CONCRETE MEDIAN TYPE SM-6 DOWELLED

TRANSITION GUTTER TO MATCH HMA SHOULDER

PROPOSED HMA SURFACE COURSE N70 1 1/2" PROPOSED LEVELING BINDER N70 1"

CCC&G TYPE B 6.24 (CONSTRUCT TO MATCH PROPOSED HMA SURFACE)

TRANSITION GUTTER TO MATCH HMA SHOULDER

(A) INLETS TO BE ADJUSTED

NOTES:

CONSTRUCT CONCRETE GUTTER (SPECIAL) TO MATCH PROPOSED HMA SURFACE COURSE.

TRANSITIONS INCLUDED IN THE COST FOR CONCRETE GUTTER (SPECIAL).

SEC 6, T15N, R5W, 3RD PM



JOB = 2200.4
 FILE NAME = *FILES*
 PLOT SCALE = *SCALE*
 PLOT DATE = *DATE*

DESIGNED - NAK
 DRAWN - AJH
 CHECKED - NAK
 DATE - 6/26/2008

REVISED -
 REVISED -
 REVISED -
 REVISED -

STATE OF ILLINOIS DEPARTMENT OF TRANSPORTATION

MONROE ST

SCALE: SHEET NO. OF SHEETS STA. TO STA.

F.A.S. RTE. 662	SECTION (2-1-2, 2-2) RS, TS-6	COUNTY SANGAMON	TOTAL SHEETS 244	SHEET NO. 83
CONTRACT NO. 72B99				
FED. ROAD DIST. NO. [ILLINOIS] FED. AID PROJECT				