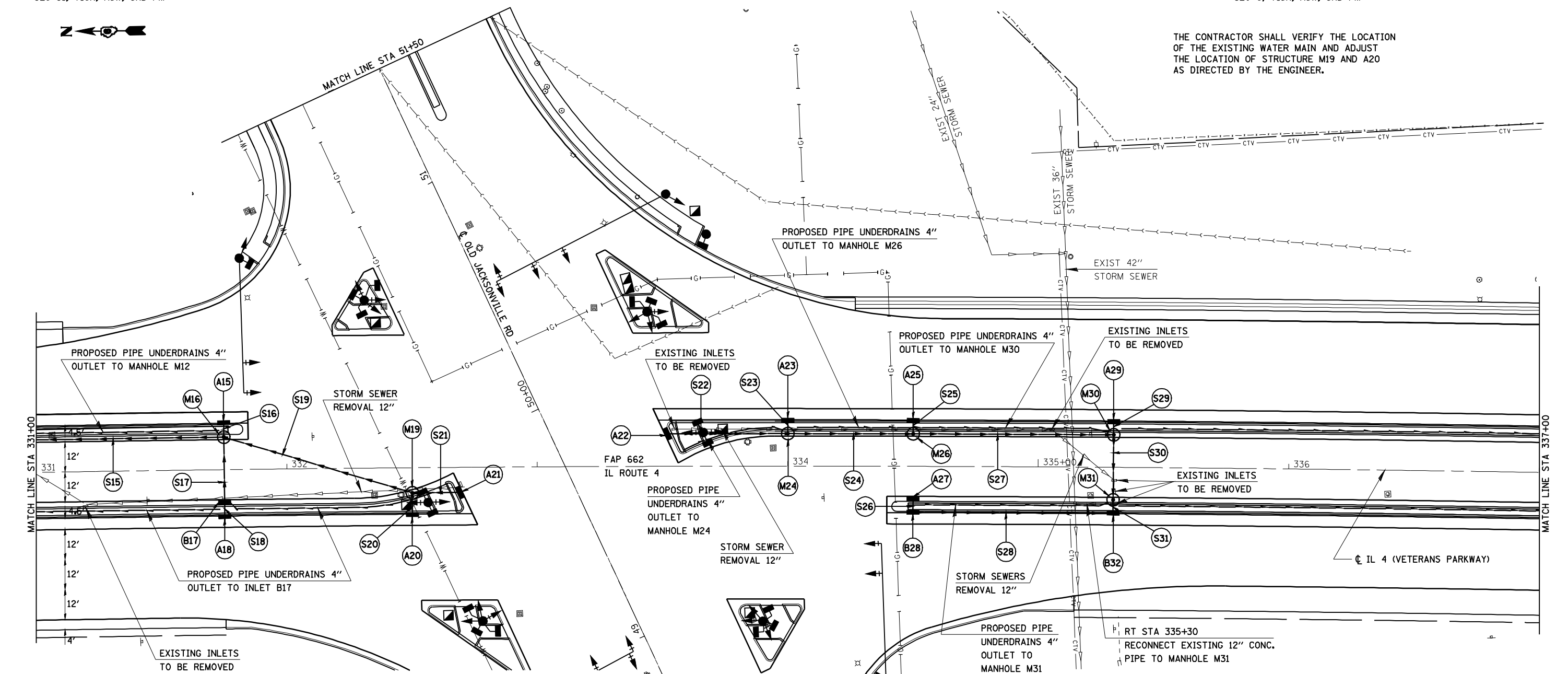


THE CONTRACTOR SHALL VERIFY THE LOCATION OF THE EXISTING WATER MAIN AND ADJUST THE LOCATION OF STRUCTURE M19 AND A20 AS DIRECTED BY THE ENGINEER.



STORM SEWERS		PRECAST REINFORCED CONCRETE FLARED END SECTIONS 12\"	STORM SEWERS, TYPE 1, RCCP, CL 4, 12\"	USFL ELEVATION	DSFL ELEVATION	CLSM
NO.	LOCATION	EACH	FOOT			CU YD
IL4 - EB TURN LANE						
S15	13' LT STA 330+90.1 TO 13' LT STA 331+73.5		83.4	604.0	603.8	10.7
S16	18.25' LT - 14.5' LT STA 331+75		3.75	604.1	604.0	0.3
S17	11.5' LT - 12' RT STA 331+75		23.5	604.2	604.0	3.9
S18	14' RT - 18.25' RT STA 331+75		4.25	604.3	604.2	0.3
S19	13' LT STA 331+76.5 TO 10' RT STA 332+48.5		76	604.4	604.1	9.3
S20	11.5' RT - 18.25' RT STA 332+50		6.75	604.5	604.4	0.8
S21	10' RT STA 332+51.5 TO 10' RT STA 332+68.5		17	604.5	604.4	1.9
IL4 - WB TURN LANE						
S22	13' LT STA 333+51.90 TO 13' LT STA 333+98.5		46.6	605.6	605.3	3.2
S23	18.25' LT - 14.5' LT STA 334+00		3.75	605.5	605.3	0.3
S24	13' LT STA 334+01.5 TO 13' LT STA 334+48.5		47	605.2	604.9	3.7
S25	18.25' LT - 14.5' LT STA 334+50		3.75	605.1	604.9	0.2
S26	13.5' RT - 17.75' RT STA 334+50		4.25	605.1	604.9	0.1
S27	13' LT STA 334+51.5 TO 13' LT STA 335+29.1		77.6	604.8	604.4	8.7
S28	18.75' RT STA 334+51.0 TO 18.75' RT STA 335+29.6		78.6	604.8	604.4	8.8
S29	18.25' LT - 14.5' LT STA 335+30.6		3.75	604.6	604.4	0.4
S30	11.5' LT - 11.5' RT STA 335+30.6		23	604.3	604.1	5.1
S31	14.5' RT - 17.75' RT STA 335+30.6		3.25	604.3	604.1	0.4
SHEET TOTAL		0	506.2			58.1

STRUCTURES		INLETS, TYPE A, TYPE 24 FRAME AND GRATE	INLETS, TYPE B, TYPE 24 FRAME AND GRATE	RESTRICTED DEPTH MANHOLES, 4' DIAMETER, TYPE 24 FRAME AND GRATE	FLOWLINE GRATE	FLOWLINE 12' EAST	FLOWLINE 12' WEST	FLOWLINE 12' NORTH	FLOWLINE 12' SOUTH
NO.	LOCATION								
IL4 - EB TURN LANE									
A15	18.75' LT STA 331+75	1			607.34		604.1		
M16	13.00' LT STA 331+75		1		607.16	604.0	604.0	604.0	
B17	13.00' RT STA 331+75		1		607.16	604.2	604.2		604.1
A18	18.75' RT STA 331+75	1			607.34	604.3			
M19	10.00' RT STA 332+50		1		607.54		604.4	604.4	604.4
A20	18.75' RT STA 332+50	1			607.53	604.5			
A21	10.00' RT STA 332+69	1			607.63		604.5		
IL4 - WB TURN LANE									
A22	13.00' LT STA 333+51.4	1			607.80				605.6
A23	18.75' LT STA 334+00	1			607.77		605.5		
M24	13.00' LT STA 334+00	1			607.61	605.3		605.3	605.2
A25	18.75' LT STA 334+50	1			607.79		605.1		
M26	13.00' LT STA 334+50	1			607.61	604.9		604.9	604.8
A27	13.00' RT STA 334+50	1			607.77		605.1		
B28	18.75' RT STA 334+50		1		607.79	604.9			604.8
A29	18.75' LT STA 335+30.60	1			607.78		604.6		
M30	13.00' LT STA 335+30.60		1		607.60	604.4	604.3	604.4	
M31	13.00' RT STA 335+30.60		1		607.60	604.1	604.1	603.9	
B32	18.75' RT STA 335+30.60		1		607.78	604.3		604.4	
SHEET TOTAL		9	3		6				



JOB = 2200.4
 FILE NAME = d672B99-shd-dra1.dgn
 PLOT SCALE = 48,0000 "/>

DESIGNED - NAK
 DRAWN - AJH
 CHECKED - NAK
 DATE - 10/08/2009

REVISED -
 REVISED -
 REVISED -
 REVISED -

STATE OF ILLINOIS
 DEPARTMENT OF TRANSPORTATION

IL 4 (VETERANS PARKWAY) - DRAINAGE

SCALE: SHEET NO. OF SHEETS STA. TO STA.

F.A.S. RTE. 662	SECTION (2-1-2, 2-2) RS, TS-6	COUNTY SANGAMON	TOTAL SHEETS 244	SHEET NO. 102
CONTRACT NO. 72B99				
FED. ROAD DIST. NO. ILLINOIS FED. AID PROJECT				