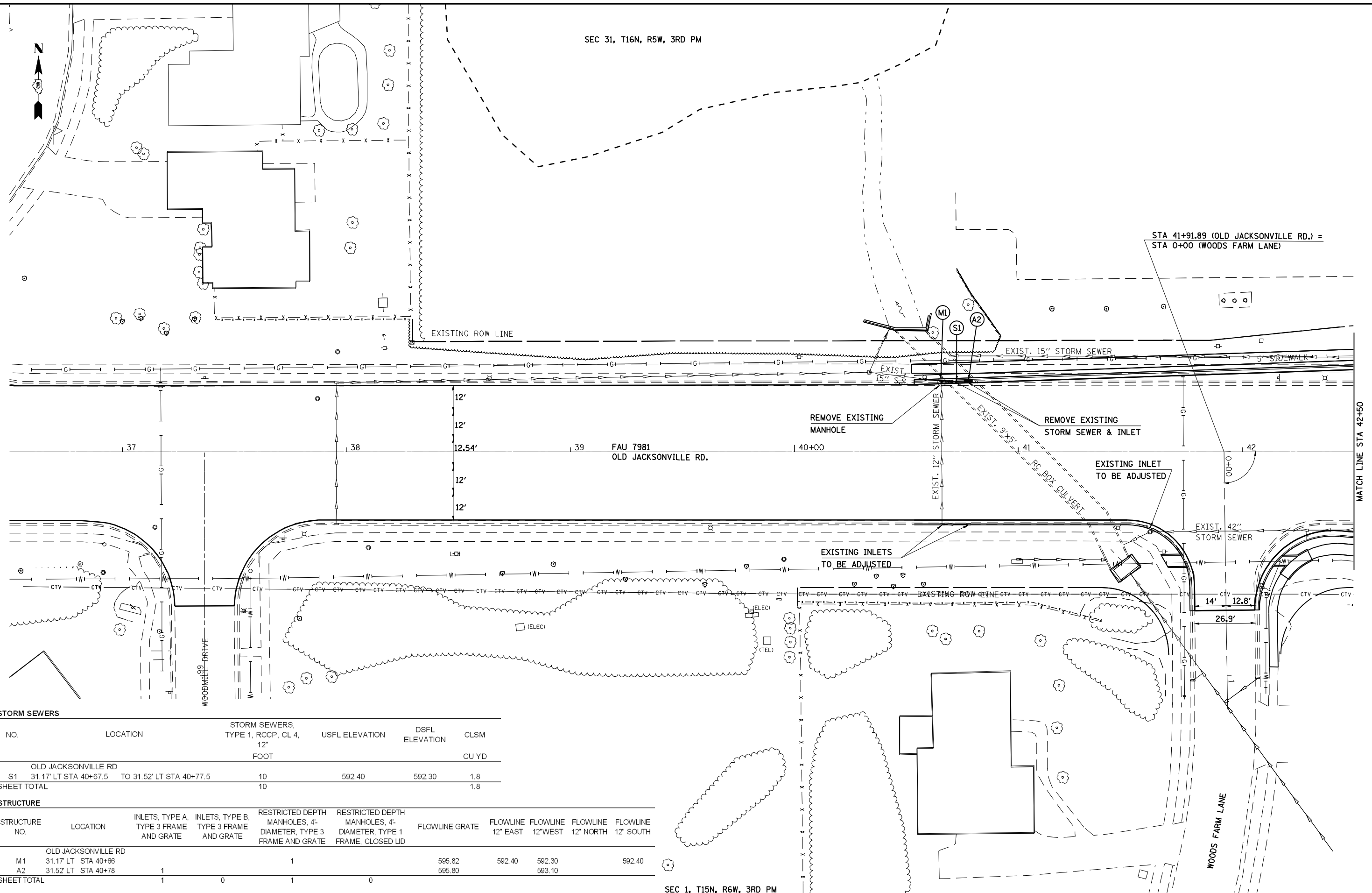


SEC 31, T16N, R5W, 3RD PM



STA 41+91.89 (OLD JACKSONVILLE RD.) =
STA 0+00 (WOODS FARM LANE)

MATCH LINE STA 42+50

STORM SEWERS

NO.	LOCATION	STORM SEWERS, TYPE 1, RCCP, CL 4, 12' FOOT	USFL ELEVATION	DSFL ELEVATION	CLSM CU YD
S1	OLD JACKSONVILLE RD 31.17' LT STA 40+67.5 TO 31.52' LT STA 40+77.5	10	592.40	592.30	1.8
SHEET TOTAL		10			1.8

STRUCTURE

STRUCTURE NO.	LOCATION	INLETS, TYPE A, TYPE 3 FRAME AND GRATE	INLETS, TYPE B, TYPE 3 FRAME AND GRATE	RESTRICTED DEPTH MANHOLES, 4'- DIAMETER, TYPE 3 FRAME AND GRATE	RESTRICTED DEPTH MANHOLES, 4'- DIAMETER, TYPE 1 FRAME, CLOSED LID	FLOWLINE GRATE	FLOWLINE 12" EAST	FLOWLINE 12" WEST	FLOWLINE 12" NORTH	FLOWLINE 12" SOUTH
M1	OLD JACKSONVILLE RD 31.17' LT STA 40+66	1	0	1	0	595.82	592.40	592.30		592.40
A2	31.52' LT STA 40+78	1	0	1	0	595.80		593.10		
SHEET TOTAL		1	0	1	0					

SEC 1, T15N, R6W, 3RD PM



JOB = 2200.4
FILE NAME = d672B99-shd-drain2.dgn
PLOT SCALE = 48,0000 "/>

DESIGNED - NAK
DRAWN - AJH
CHECKED - NAK
DATE - 10/15/2009

REVISED -
REVISED -
REVISED -
REVISED -

**STATE OF ILLINOIS
DEPARTMENT OF TRANSPORTATION**

OLD JACKSONVILLE RD - DRAINAGE

SCALE: SHEET NO. OF SHEETS STA. TO STA.

F.A.S. RTE.	SECTION	COUNTY	TOTAL SHEETS	SHEET NO.
662	(2-1-2, 2-2) RS, TS-6	SANGAMON	244	106
CONTRACT NO. 72B99				
FED. ROAD DIST. NO. [ILLINOIS] FED. AID PROJECT				