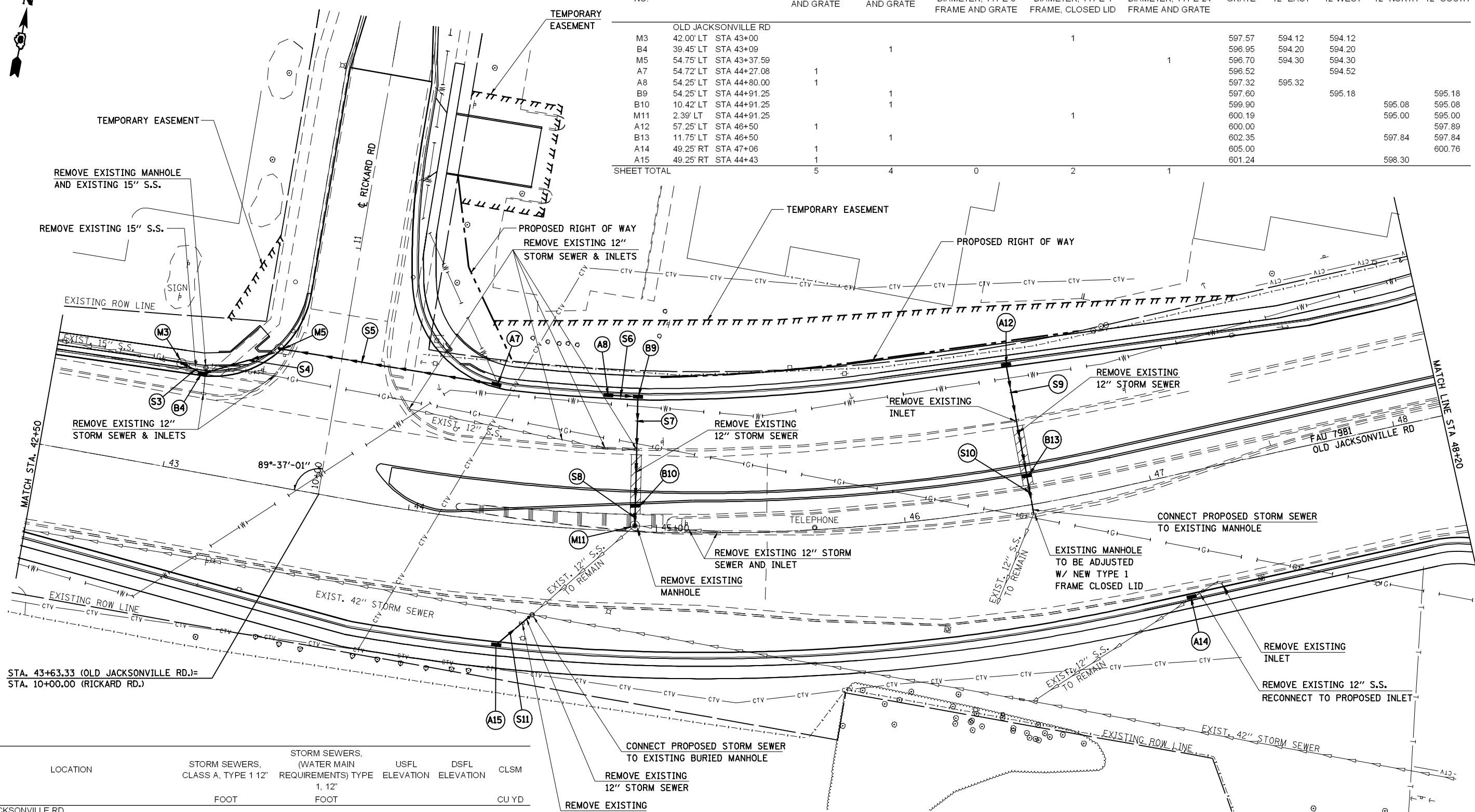


SEC 31, T16N, R5W, 3RD PM



STRUCTURE

STRUCTURE NO.	LOCATION	INLETS, TYPE A, TYPE 3 FRAME AND GRATE	INLETS, TYPE B, TYPE 3 FRAME AND GRATE	RESTRICTED DEPTH MANHOLES, 4'-DIAMETER, TYPE 3 FRAME AND GRATE	RESTRICTED DEPTH MANHOLES, 4'-DIAMETER, TYPE 1 FRAME, CLOSED LID	RESTRICTED DEPTH MANHOLES, 4'-DIAMETER, TYPE 24 FRAME AND GRATE	FLOWLINE GRATE	FLOWLINE 12" EAST	FLOWLINE 12" WEST	FLOWLINE 12" NORTH	FLOWLINE 12" SOUTH
M3	42.00' LT STA 43+00						597.57	594.12	594.12		
B4	39.45' LT STA 43+09		1				596.95	594.20	594.20		
M5	54.75' LT STA 43+37.59					1	596.70	594.30	594.30		
A7	54.72' LT STA 44+27.08	1					596.52		594.52		
A8	54.25' LT STA 44+80.00	1					597.32	595.32			
B9	54.25' LT STA 44+91.25		1				597.60		595.18		595.18
B10	10.42' LT STA 44+91.25		1				599.90			595.08	595.08
M11	2.39' LT STA 44+91.25				1		600.19			595.00	595.00
A12	57.25' LT STA 46+50	1					600.00				597.89
B13	11.75' LT STA 46+50		1				602.35			597.84	597.84
A14	49.25' RT STA 47+06	1					605.00				600.76
A15	49.25' RT STA 44+43	1					601.24			598.30	
SHEET TOTAL		5	4	0	2	1					



STORM SEWERS

NO.	LOCATION	STORM SEWERS, CLASS A, TYPE 1 12"		USFL ELEVATION	DSFL ELEVATION	CLSM
		FOOT	FOOT			
OLD JACKSONVILLE RD						
S3	42' LT STA 43+01.50 TO 39.5' LT STA 43+08.50	7.5		594.20	594.12	1.2
S4	39.50' LT STA 43+10.50 TO 53.50' LT STA 43+36.50	30.5		594.30	594.20	3.3
S5	59.00' LT STA 43+37.5 TO 54.72' LT STA 44+26.58		89.1	594.52	594.30	7.5
S6	54.25' LT STA 44+80.5 TO 54.25' LT STA 44+90.25		9.75	595.32	595.18	0.4
S7	53.25' LT - 11.42' LT STA 44+91.25		41.83	595.18	595.08	8.6
S8	9.4' LT - 3.9' LT STA 44+91.25	5.5		595.08	595.00	2.0
S9	56.75' LT - 12.75' LT STA 46+50		44	597.89	597.84	8.1
S10	10.75' LT - 2.25' RT STA 46+50	23.5		597.84	597.40	8.8
S11	49.25' RT STA 44+43 TO 35.86' RT STA 44+55.58	16.8		598.30	597.60	3.4
SHEET TOTAL		83.8	184.68			43.3

SEC 1, T15N, R6W, 3RD PM



JOB = 2200.4	DESIGNED - NAK	REVISED -
FILE NAME = d672B99-shd-drain2.dgn	DRAWN - AJH	REVISED -
PLOT SCALE = 48,0000 "/>		
PLOT DATE = Oct-29-2009 11:49:02AM	DATE - 10/15/2009	REVISED -

STATE OF ILLINOIS
DEPARTMENT OF TRANSPORTATION

OLD JACKSONVILLE RD - DRAINAGE

SCALE:	SHEET NO.	OF	SHEETS	STA.	TO STA.
--------	-----------	----	--------	------	---------

F.A.S. RTE. 662	SECTION (2-1-2, 2-2) RS, TS-6	COUNTY SANGAMON	TOTAL SHEETS 244	SHEET NO. 107
FED. ROAD DIST. NO. [ILLINOIS] FED. AID PROJECT			CONTRACT NO. 72B99	