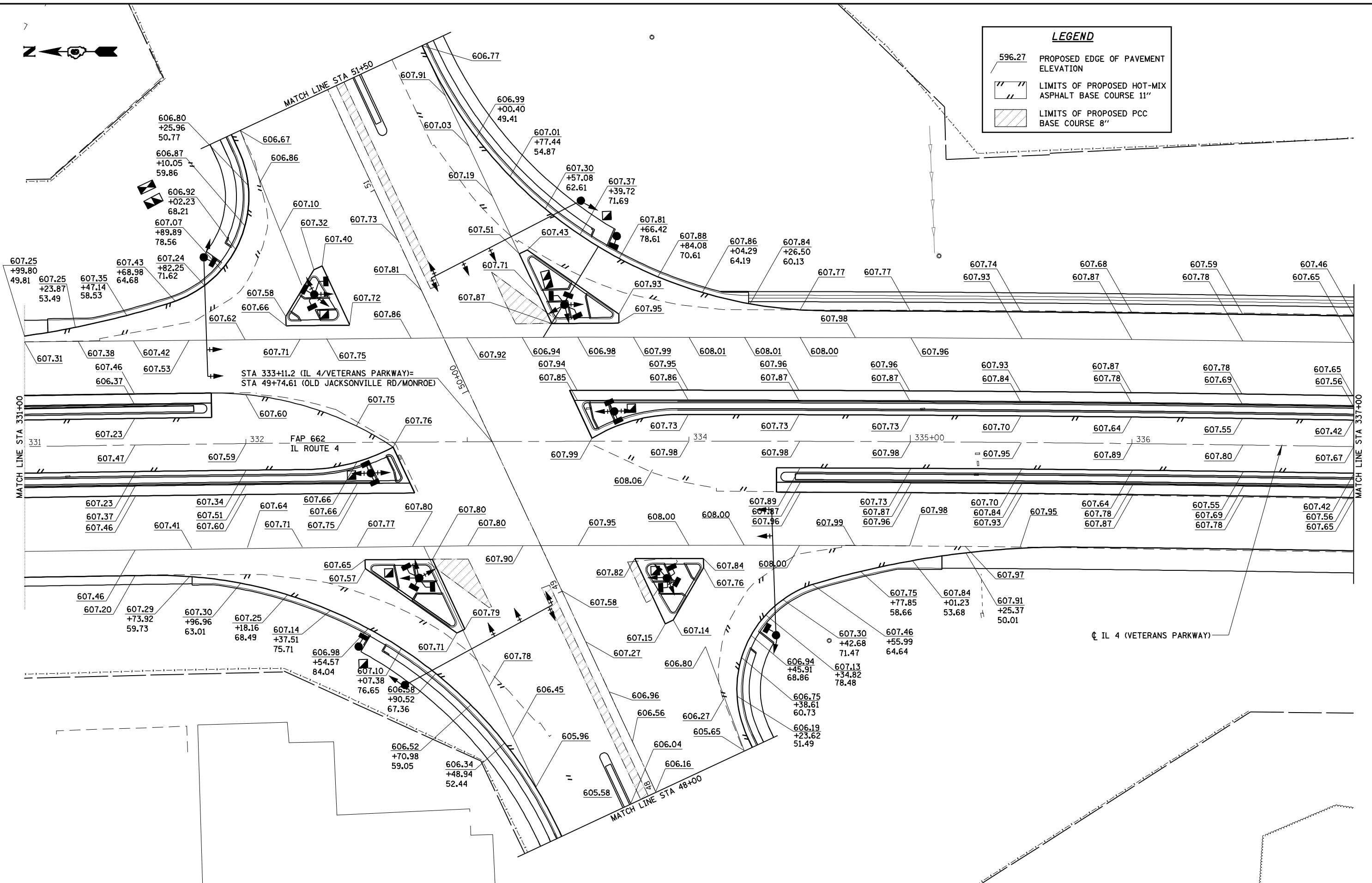




LEGEND	
596.27	PROPOSED EDGE OF PAVEMENT ELEVATION
	LIMITS OF PROPOSED HOT-MIX ASPHALT BASE COURSE 11"
	LIMITS OF PROPOSED PCC BASE COURSE 8"



CEC Cummins Engineering Corporation
Civil and Structural Engineering

JOB = 2200.4
FILE NAME = D672B99-shd-elev-1.dgn
PLOT SCALE = 48,0000 "/> IN.
PLOT DATE = Oct-29-2009 11:49:49AM

DESIGNED - NAK
DRAWN - AJH
CHECKED - NAK
DATE - 10/15/2009

REVISED -
REVISED -
REVISED -
REVISED -

**STATE OF ILLINOIS
DEPARTMENT OF TRANSPORTATION**

IL 4 (VETERANS PARKWAY) - ELEVATIONS

SCALE: SHEET NO. OF SHEETS STA. TO STA.

F.A.S. RTE.	SECTION	COUNTY	TOTAL SHEETS	SHEET NO.
662	(2-1-2, 2-2) RS, TS-6	SANGAMON	244	112
CONTRACT NO. 72B99				
FED. ROAD DIST. NO. ILLINOIS FED. AID PROJECT				