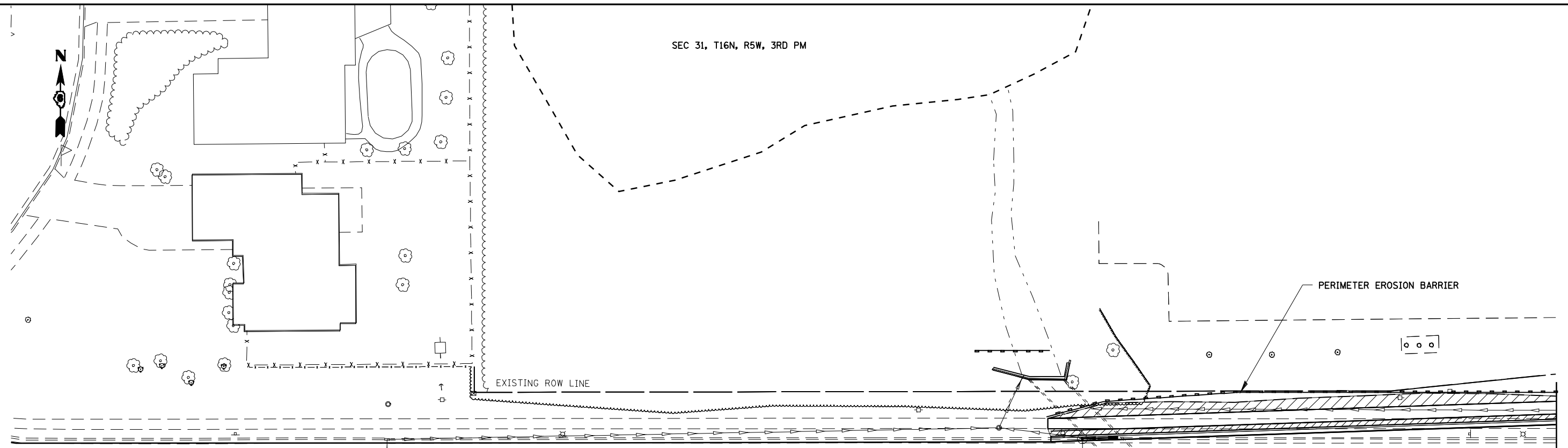
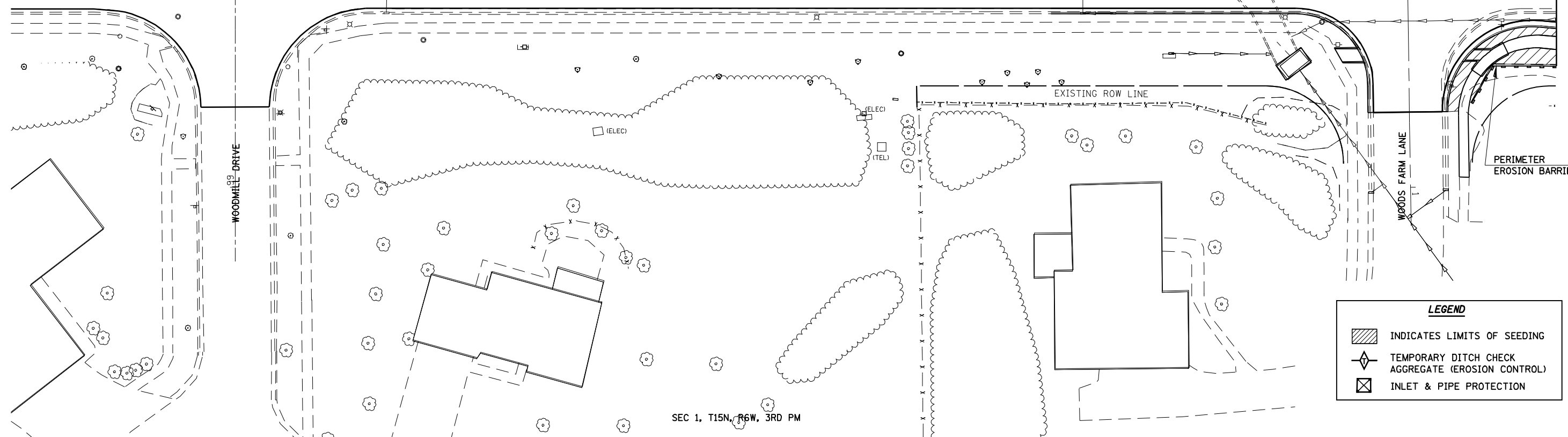


SEC 31, T16N, R5W, 3RD PM


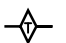



FAU 7981
OLD JACKSONVILLE RD.



SEC 1, T15N, R6W, 3RD PM

LEGEND

-  INDICATES LIMITS OF SEEDING
-  TEMPORARY DITCH CHECK AGGREGATE (EROSION CONTROL)
-  INLET & PIPE PROTECTION

CEC Cummins
Engineering
Corporation
Civil and Structural Engineering

JOB = 2200.4
FILE NAME = d672B99-shr-erosion4.dgn
PLOT SCALE = 48,0000 "/> IN.
PLOT DATE = Oct-29-2009 11:55:33AM

DESIGNED - NAK
DRAWN - AJH
CHECKED - NAK
DATE - 10/12/2009

REVISED -
REVISED -
REVISED -
REVISED -

STATE OF ILLINOIS
DEPARTMENT OF TRANSPORTATION

OLD JACKSONVILLE RD - EROSION CONTROL

SCALE: SHEET NO. OF SHEETS STA. TO STA.

F.A.S. RTE.	SECTION	COUNTY	TOTAL SHEETS	SHEET NO.
662	(2-1-2, 2-2) RS, TS-6	SANGAMON	244	165
FED. ROAD DIST. NO. ILLINOIS FED. AID PROJECT			CONTRACT NO. 72B99	