

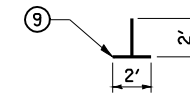
PAVEMENT MARKING LEGEND

- ① PR PREFORMED PLASTIC PAVEMENT MARKING, TYPE B (INLAID), LINE 5" (30' SKIP, 10' DASH)
- ② PR URETHANE PAVEMENT MARKING, DOUBLE LINE 5" (SOLID YELLOW)
- ③ PR URETHANE PAVEMENT MARKING, LINE 5" (SOLID YELLOW)
- ④ PR URETHANE PAVEMENT MARKING, LINE 5" (SOLID WHITE)
- ⑤ PR URETHANE PAVEMENT MARKING, LINE 6" (SOLID WHITE)
- ⑥ PR PREFORMED PLASTIC PAVEMENT MARKING, TYPE B (INLAID), LINE 5" (6' SKIP, 2' DASH)
- ⑦ PR PREFORMED PLASTIC PAVEMENT MARKING, TYPE B (INLAID), LINE 8" (SOLID WHITE)
- ⑧ PR PREFORMED PLASTIC PAVEMENT MARKING, TYPE B (INLAID), LINE 12" (SOLID YELLOW)
- ⑨ PR PREFORMED PLASTIC PAVEMENT MARKING, TYPE B (INLAID), LINE 12" (SOLID WHITE)
- ⑩ PR PREFORMED PLASTIC PAVEMENT MARKING, TYPE B (INLAID), LINE 24" (SOLID WHITE)
- ⑪ PR PREFORMED PLASTIC PAVEMENT MARKING, TYPE B (INLAID), LETTERS & SYMBOLS (SOLID WHITE)

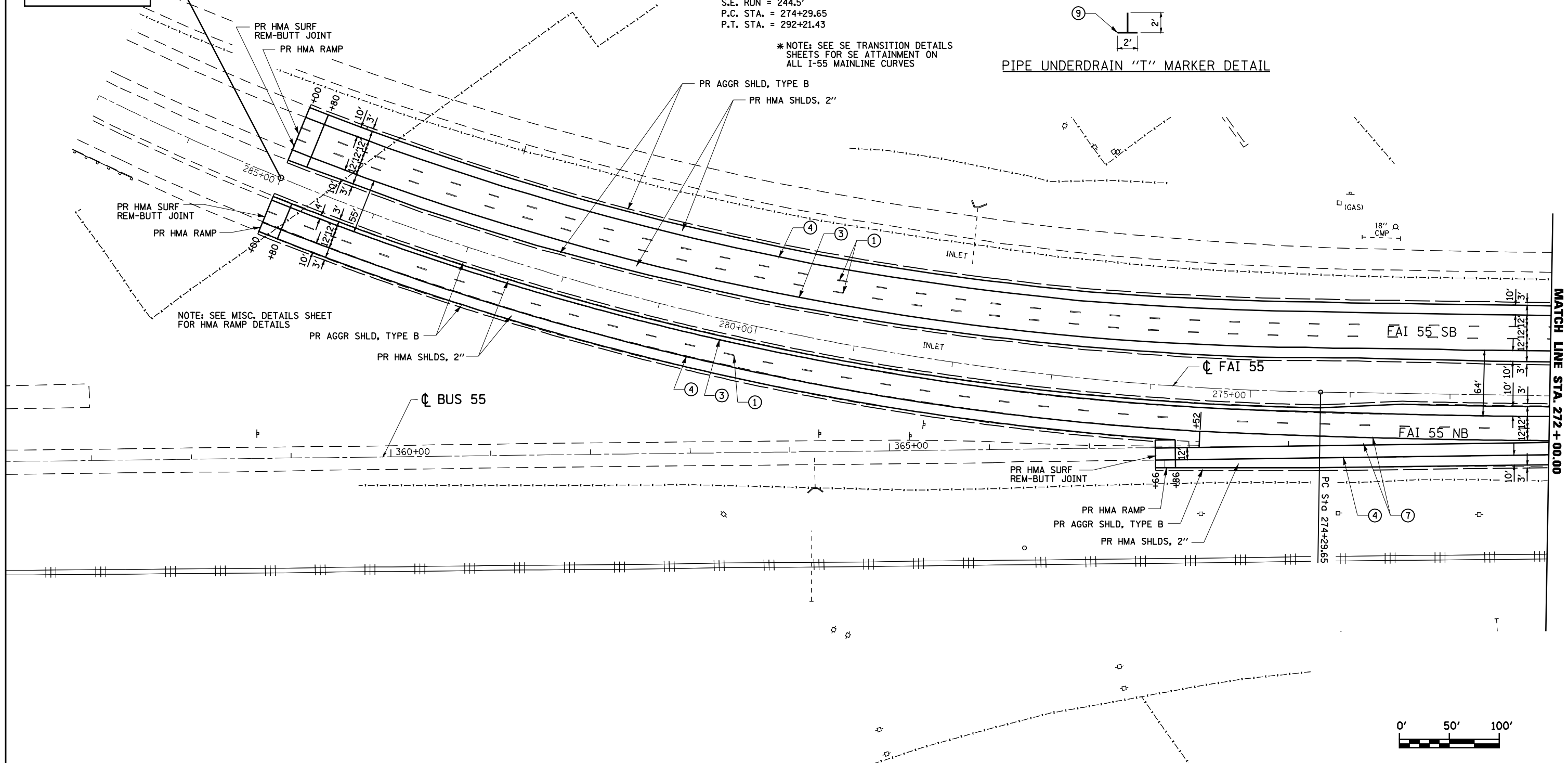
\* EXIST. CURVE 283  
 PI STA. = 283+55.91  
 $\Delta = 35^\circ 49' 17''$  (RT)  
 $D = 1^\circ 59' 57''$   
 $R = 2,865.93'$   
 $T = 926.26'$   
 $L = 1,791.78'$   
 $E = 145.97'$   
 $e = 5.44\%$   
 $T.R. = 90.0'$   
 $S.E. RUN = 244.5'$   
 $P.C. STA. = 274+29.65$   
 $P.T. STA. = 292+21.43$

\* NOTE: SEE SE TRANSITION DETAILS SHEETS FOR SE ATTAINMENT ON ALL I-55 MAINLINE CURVES

PIPE UNDERDRAIN "T" MARKER DETAIL

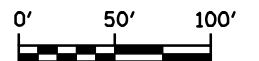


BEGIN IMPROVEMENT STA. 285+00.00



NOTE: SEE MISC. DETAILS SHEET FOR HMA RAMP DETAILS

MATCH LINE STA. 272+00.00



FILE NAME =	USER NAME = laughlinr1	DESIGNED - R.A.W.	REVISED -
et:\pwork\pwork\LAUGHLINRL\0169970\0672C38-RPT-Plan I-55.dgn		DRAWN - R.A.W.	REVISED -
	PLOT SCALE = 100.0000' / IN.	CHECKED - J.S.A.	REVISED -
	PLOT DATE = Oct-28-2009 08:45:54AM	DATE - 7/24/09	REVISED -

STATE OF ILLINOIS  
 DEPARTMENT OF TRANSPORTATION

PLAN SHEET			
STA. 285+00 TO 272+00			
SCALE: 1"=50'	SHEET NO.	OF SHEETS	STA. TO STA.

F.A.I. RTE.	SECTION	COUNTY	TOTAL SHEETS	SHEET NO.
I-55	84-1-2RS4150RS1	SANGAMON	65	16
CONTRACT NO. 72C38				
ILLINOIS FED. AID PROJECT				