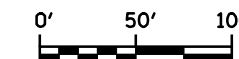


**PAVEMENT MARKING LEGEND**

- ① PR PREFORMED PLASTIC PAVEMENT MARKING, TYPE B (INLAID), LINE 5" (30' SKIP, 10' DASH)
- ② PR URETHANE PAVEMENT MARKING, DOUBLE LINE 5" (SOLID YELLOW)
- ③ PR URETHANE PAVEMENT MARKING, LINE 5" (SOLID YELLOW)
- ④ PR URETHANE PAVEMENT MARKING, LINE 5" (SOLID WHITE)
- ⑤ PR URETHANE PAVEMENT MARKING, LINE 6" (SOLID WHITE)
- ⑥ PR URETHANE PAVEMENT MARKING, LINE 5" (6' SKIP, 2' DASH)
- ⑦ PR PREFORMED PLASTIC PAVEMENT MARKING, TYPE B (INLAID), LINE 8" (SOLID WHITE)
- ⑧ PR PREFORMED PLASTIC PAVEMENT MARKING, TYPE B (INLAID), LINE 12" (SOLID YELLOW)
- ⑨ PR PREFORMED PLASTIC PAVEMENT MARKING, TYPE B (INLAID), LINE 12" (SOLID WHITE)
- ⑩ PR PREFORMED PLASTIC PAVEMENT MARKING, TYPE B (INLAID), LINE 24" (SOLID WHITE)
- ⑪ PR PREFORMED PLASTIC PAVEMENT MARKING, TYPE B (INLAID), LETTERS & SYMBOLS (SOLID WHITE)



FILE NAME =	USER NAME = laughlinr1	DESIGNED - R.A.W.	REVISED -
es:\pwork\pwork\LAUGHLINRL\0169970\0672C38-RPT-Plan I-55.dgn		DRAWN - R.A.W.	REVISED -
	PLOT SCALE = 100.0000' / IN.	CHECKED - J.S.A.	REVISED -
	PLOT DATE = Oct-28-2009 08:47:10AM	DATE - 7/24/09	REVISED -

**STATE OF ILLINOIS  
DEPARTMENT OF TRANSPORTATION**

<b>PLAN SHEET</b>			
<b>STA. 356+00 TO 371+00</b>			
SCALE: 1"=50'	SHEET NO.	OF SHEETS	STA. TO STA.

F.A.I. RTE.	SECTION	COUNTY	TOTAL SHEETS	SHEET NO.
I-55	84-1-2RS4150RS1	SANGAMON	65	31
CONTRACT NO. 72C38				
ILLINOIS FED. AID PROJECT				