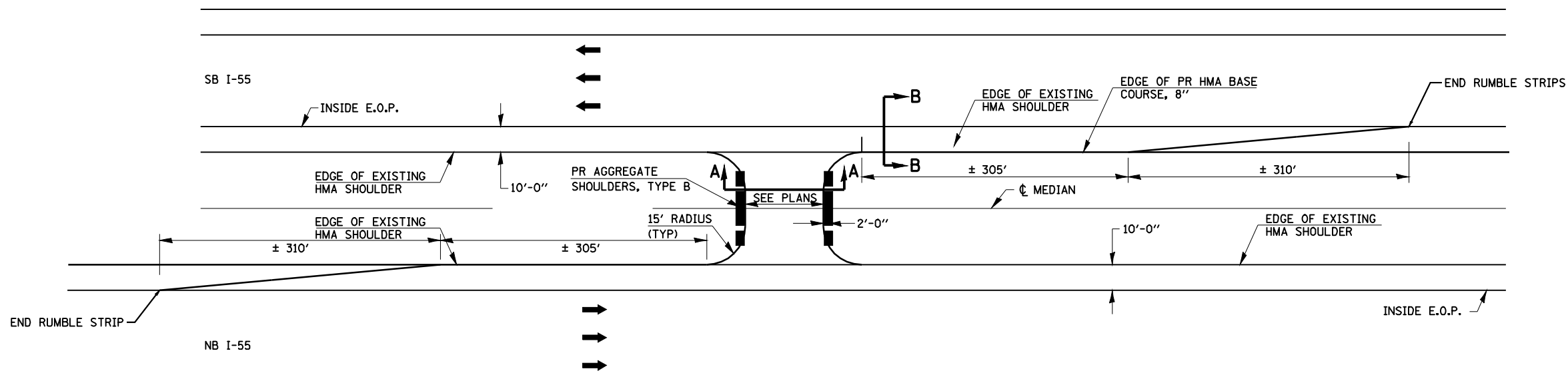
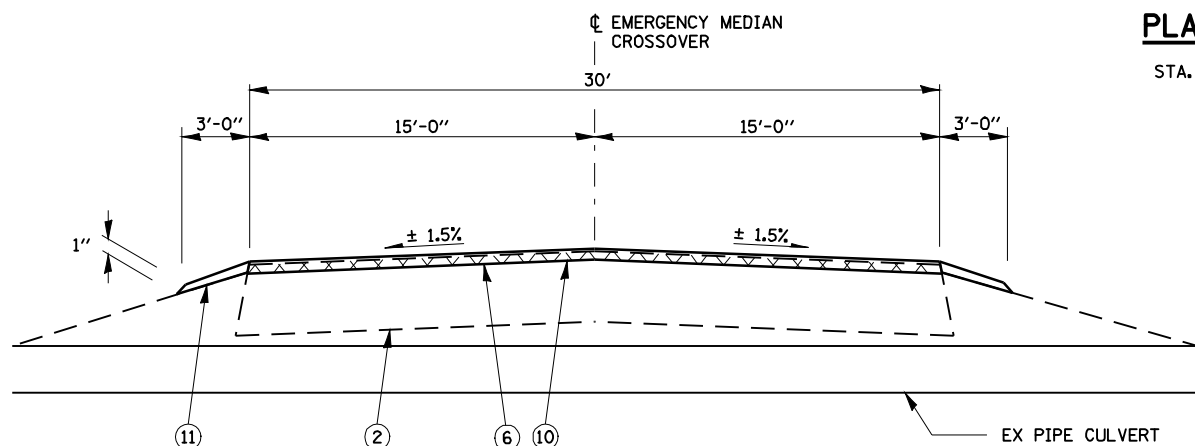


EMERGENCY MEDIAN CROSSOVER  
I-55

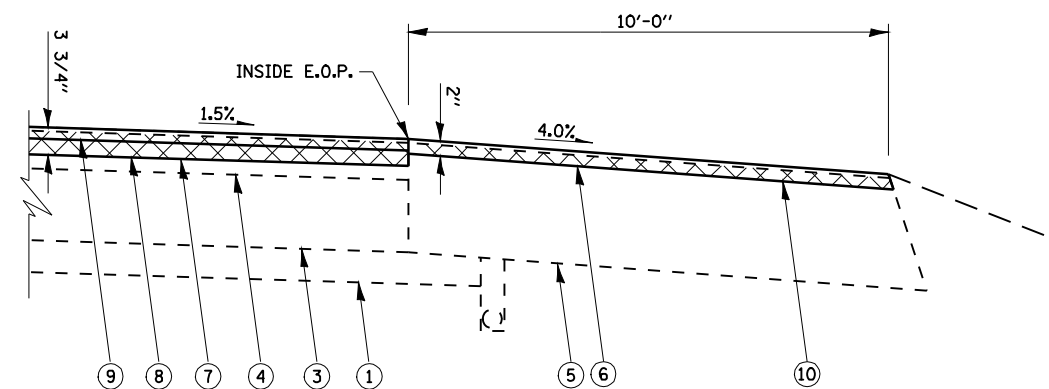


**PLAN VIEW**

STA. 259+45.02



**SECTION A - A**



**SECTION B - B**

\* - MAINTAIN SLOPES AWAY FROM MAINLINE PAVEMENT TO ENSURE PROPER DRAINAGE INTO MEDIAN DITCHES.

**LEGEND**

- ① EX AGGREGATE SUB-BASE, 4"
- ② EX AGGREGATE BASE COURSE
- ③ EX P.C.C. PAVEMENT
- ④ EX HOT-MIX ASPHALT OVERLAY
- ⑤ EX HOT-MIX ASPHALT SHOULDER
- ⑥ PR HOT-MIX ASPHALT SURFACE REMOVAL 1 1/2"
- ⑦ PR HOT-MIX ASPHALT SURFACE REMOVAL 3 1/4"
- ⑧ PR POLYMERIZED HOT-MIX ASPHALT BINDER COURSE, 2 1/4"
- ⑨ PR POLYMERIZED HOT-MIX ASPHALT SURFACE COURSE, 1 1/2"
- ⑩ PR HOT-MIX ASPHALT SHOULDERS, 2"
- ⑪ PR AGGREGATE SHOULDERS, TYPE B

FILE NAME =	USER NAME = laughlinr1	DESIGNED - R.A.W.	REVISED -	<b>STATE OF ILLINOIS DEPARTMENT OF TRANSPORTATION</b>	<b>EMERGENCY MEDIAN CROSS OVER DETAIL</b>			F.A.I. RTE.	SECTION	COUNTY	TOTAL SHEETS	SHEET NO.
et:\pwork\pwork\LAUGHLINRL\0169970\0672C38-Sht-Misc02.dgn		DRAWN - R.A.W.	REVISED -					I-55	84-1-2RS4150RS1	SANGAMON	65	55
PLOT SCALE = 2.0000' / IN.		CHECKED - J.S.A.	REVISED -					CONTRACT NO. 72C38				
PLOT DATE = Oct-28-2009 08:48:57AM		DATE - 7/24/09	REVISED -					ILLINOIS FED. AID PROJECT				
				SCALE:	SHEET NO.	OF SHEETS	STA.	TO STA.				