

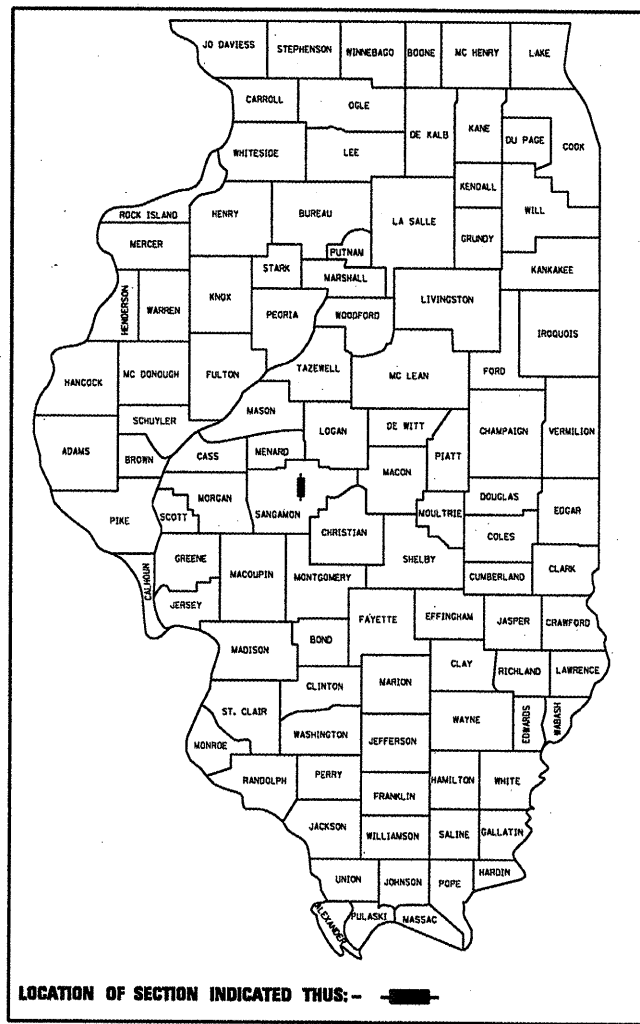
F.A.P. RTE.	SECTION	COUNTY	TOTAL SHEETS	SHEET NO.
666	103Z (RS-2)	SANGAMON	13	1
		ILLINOIS	CONTRACT NO. 72C59	

STATE OF ILLINOIS
DEPARTMENT OF TRANSPORTATION
DIVISION OF HIGHWAYS

PROPOSED
HIGHWAY PLANS
FAP ROUTE 666 (BUS I-55 /NINTH ST.)
SECTION 103Z (RS-2)

THE RESURFACING & RESTRIPIING FOR 9TH ST.
SANGAMON COUNTY
C-96-038-09

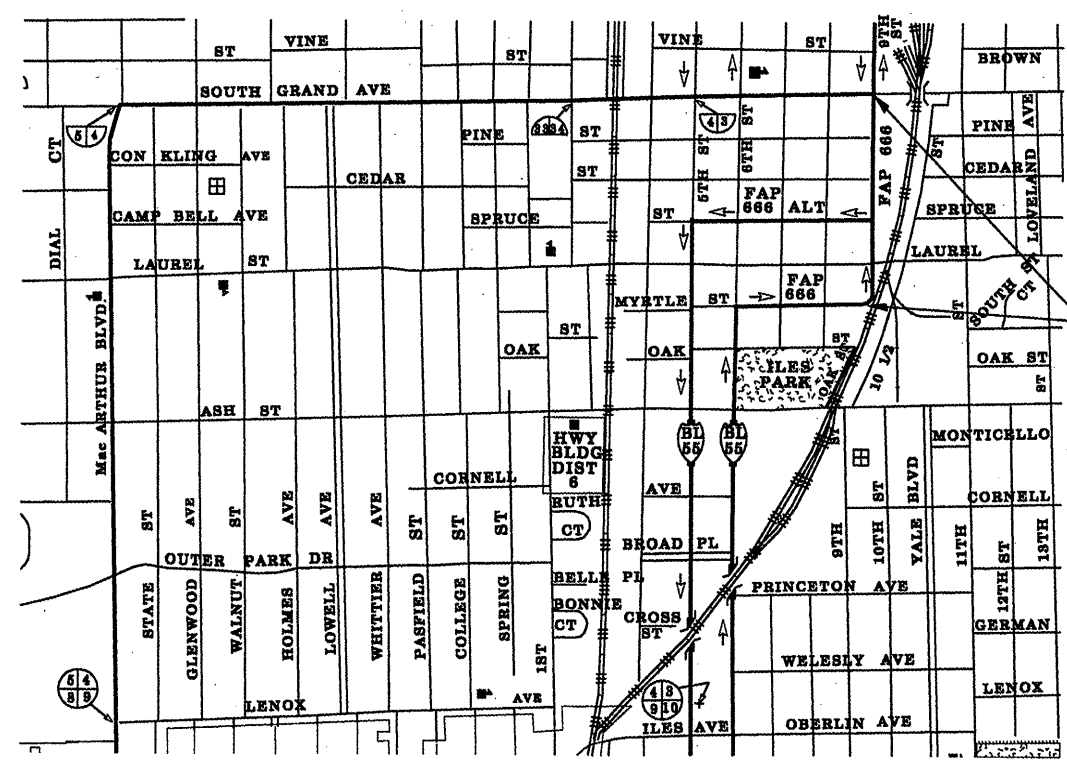
D-96-038-09



- INDEX OF SHEETS**
- 1 COVER SHEET
 - 2 GENERAL NOTES
 - 3-4 SUMMARY OF QUANTITIES
 - 5 TYPICAL CROSS SECTION
 - 6 SCHEDULE OF QUANTITIES
 - 7-9 NINTH ST. PLAN SHEETS
 - 10-13 PLAN DETAILS (DETECTOR LOOPS)

STANDARDS

000001-05	701901-01
667101-01	780001-02
668001-01	781001-03
701602-04	886001-01
701701-06	886006-01

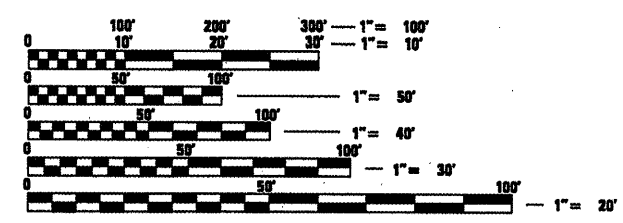


PROPOSED RESURFACING & STRIPING FOR 9TH ST.
BEGIN: STA. 41+02.80
END: STA. 55+98.27



LOCATION MAP

GROSS LENGTH (NINTH ST. RESURFACING) = 1,495.47 FT. = 0.283 MILE
NET LENGTH (NINTH ST. RESURFACING) = 1,495.47 FT. = 0.283 MILE



FULL SIZE PLANS HAVE BEEN PREPARED USING STANDARD ENGINEERING SCALES. REDUCED SIZED PLANS WILL NOT CONFORM TO STANDARD SCALES. IN MAKING MEASUREMENTS ON REDUCED PLANS, THE ABOVE SCALES MAY BE USED.

J.U.L.I.E.
 JOINT UTILITY LOCATION INFORMATION FOR EXCAVATION
 1-800-892-0123
 OR 811

STATE OF ILLINOIS
 DEPARTMENT OF TRANSPORTATION
 DIVISION OF HIGHWAYS

SUBMITTED OCTOBER 15 2009
Reg. Z. Dink
 DEPUTY DIRECTOR OF HIGHWAYS, REGION ENGINEER

December 4, 2009
Charles J. Ingersoll
 ENGINEER OF DESIGN AND ENVIRONMENT

December 4, 2009
Christine M. Reed
 DIRECTOR OF HIGHWAYS, CHIEF ENGINEER

PRINTED BY THE AUTHORITY
OF THE STATE OF ILLINOIS

CONTRACT NO. 72C59

PROJECT ENGINEER: SAL MADONIA (217) 782-4761
 PROJECT SQUAD LEADER: MARCUS BRUCE (217) 524-0946

GENERAL NOTES

1. ANY REFERENCE TO A STANDARD IN THESE PLANS SHALL BE INTERPRETED TO MEAN THE EDITION AS INDICATED BY THE SUB NUMBER LISTED IN THE INDEX OF SHEETS OR THE COPY OF THE STANDARD INCLUDED IN THESE PLANS.
2. IN ADDITION TO FIELD SURVEYS, PLAN DIMENSIONS AND DETAILS RELATIVE TO THE EXISTING FACILITIES HAVE BEEN TAKEN FROM EXISTING PLANS AND ARE SUBJECT TO CONSTRUCTION VARIATIONS. IT SHALL BE THE CONTRACTOR'S RESPONSIBILITY TO VERIFY SUCH DIMENSIONS AND DETAILS IN THE FIELD. SUCH VARIATIONS SHALL NOT BE A CAUSE FOR ADDITIONAL COMPENSATION DUE TO A CHANGE IN THE SCOPE OF WORK, HOWEVER, THE CONTRACTOR WILL BE PAID FOR THE QUANTITY ACTUALLY FURNISHED AT THE UNIT PRICE BID FOR THE WORK.
3. ACCESS TO ALL ENTRANCES AND SIDE ROADS SHALL BE MAINTAINED AT ALL TIMES.
4. THE CONTRACTOR SHALL BE RESPONSIBLE FOR PROTECTING UTILITY PROPERTY FROM CONSTRUCTION OPERATIONS, AS OUTLINED IN ARTICLE 107.31 OF THE STANDARD SPECIFICATIONS. THE J.U.L.I.E. NUMBER IS 1-800-892-0123. A MINIMUM OF 48 HOURS ADVANCE NOTICE IS REQUIRED.
5. THE THICKNESS OF BITUMINOUS MIXTURES SHOWN ON THE PLANS IS THE NOMINAL THICKNESS. DEVIATIONS FROM THE NOMINAL THICKNESS WILL BE PERMITTED WHEN SUCH DEVIATIONS OCCUR DUE TO IRREGULARITIES IN THE EXISTING SURFACE OR BASE ON WHICH THE BITUMINOUS MIXTURE IS PLACED.
6. ALL SAW CUTS, NECESSARY TO COMPLETE THE WORK DETAILED IN THESE PLANS, SHALL BE INCLUDED IN THE COST FOR THE VARIOUS PAY ITEMS INVOLVED.
7. UNLESS DIRECTED BY THE ENGINEER, PAVEMENT MARKING LINES SHALL NOT BE LAID DIRECTLY OVER A LONGITUDINAL CRACK OR JOINT NOR OVER A TAR OR ASPHALT PAINTED LINE. THE EDGE OF A CENTERLINE OR LANE LINE SHALL BE OFFSET A MINIMUM DISTANCE OF 2" FROM A LONGITUDINAL CRACK OR JOINT. EDGE LINES SHALL BE APPROXIMATELY 2" FROM THE EDGE LINE OF PAVEMENT. SEE SECTION 780 OF THE STANDARD SPECIFICATIONS FOR TRAFFIC CONTROL ITEMS.
8. THE FOLLOWING RATES OF APPLICATION HAVE BEEN USED TO CALCULATE THE PLAN QUANTITIES:
 BITUMINOUS MATERIALS (PRIME COAT) 0.00038 TON/SQ. YD. (ON PAVEMENT)
 BITUMINOUS MATERIALS (PRIME COAT) 0.001425 TON/SQ.YD. (ON AGG)
 AGGREGATE PRIME COAT 0.002 TON/SQ. YD.
 BITUMINOUS CONCRETE SURFACE / BINDER 0.056 TON/SQ. YD. PER 1"
 AGGREGATE MATERIAL 2.05 TON/CU. YD.
9. THE EXISTING ROAD SIGNS THAT INTERFERE WITH CONSTRUCTION WILL BE REMOVED OR RELOCATED AS DIRECTED BY THE ENGINEER. AFTER THE CONSTRUCTION IS COMPLETED, THE CONTRACTOR WILL REPLACE THE SIGNS AS DIRECTED BY THE ENGINEER. THIS WORK WILL NOT BE PAID SEPARATELY BUT SHALL BE CONSIDERED INCLUDED IN THE CONTRACT, AND NO COMPENSATION WILL BE ALLOWED.
10. WHERE SECTION OR SUB-SECTION MARKERS ARE ENCOUNTERED, THE ENGINEER SHALL BE NOTIFIED BEFORE SUCH MONUMENTS ARE REMOVED. THE CONTRACTOR SHALL PROTECT AND CAREFULLY PRESERVE ALL PROPERTY MARKERS AND MONUMENTS UNTIL THE OWNER, AN AUTHORIZED AGENT OR LAND SURVEYOR HAS WITNESSED OR OTHERWISE REFERENCED THEIR LOCATION.
11. LIMITS OF CONSTRUCTION ALONG SIDE ROADS SHALL BE VERIFIED AND APPROVED BY THE ENGINEER BEFORE WORK BEGINS. LIMITS MAY BE ADJUSTED FROM PROPOSED PLAN LAYOUT IF ENGINEER DEEMS NECESSARY.
12. EXISTING MANHOLES AND INLET FRAMES & LIDS DAMAGED BY THE CONTRACTOR'S OPERATION SHALL BE REPLACED WITH NEW FRAMES AND LIDS AT THE CONTRACTOR'S EXPENSE.

THE FOLLOWING MIXTURE REQUIREMENTS ARE APPLICABLE FOR THIS PROJECT:

FAP 666 (NINTH STREET)	
MIXTURE USE(S):	HMA SURF CSE
AC/PG:	SBS PG 70-22
DESIGN AIR VOIDS:	4.0% @ N DESIGN = 70
MIXTURE COMPOSITION: (GRADATION MIXTURE)	IL 9.5 OR 12.5
FRICTION AGREGATE:	MIX "D"

DISTRICT SIX	
EXAMINED <u>October 13</u> 20 <u>09</u> <i>Samir A. Hossain</i>	OPERATIONS ENGINEER
EXAMINED <u>October 13</u> 20 <u>09</u> <i>Samir A. Hossain</i>	PROGRAM IMPLEMENTATION ENGINEER
EXAMINED <u>October 13</u> 20 <u>09</u> <i>Samir A. Hossain</i>	PROGRAM DEVELOPMENT ENGINEER

FILE NAME =	USER NAME = turnerg	DESIGNED - RTS	REVISED - RTS 03-30-09
c:\pwork\PWIDOT\TURNERGO\0122419\0672059-shit-gennote.dgn		DRAWN - RTS	REVISED -
		CHECKED -	REVISED -
		DATE - 01-09-09	REVISED -

**STATE OF ILLINOIS
DEPARTMENT OF TRANSPORTATION**

GENERAL NOTES

SCALE: SHEET NO. 1 OF 1 SHEETS STA. TO STA.

F.A.P. RTE.	SECTION	COUNTY	TOTAL SHEETS	SHEET NO.
666	103Z(RS-2)	SANGAMON	13	2
CONTRACT NO. 72C59			ILLINOIS FED. AID PROJECT	

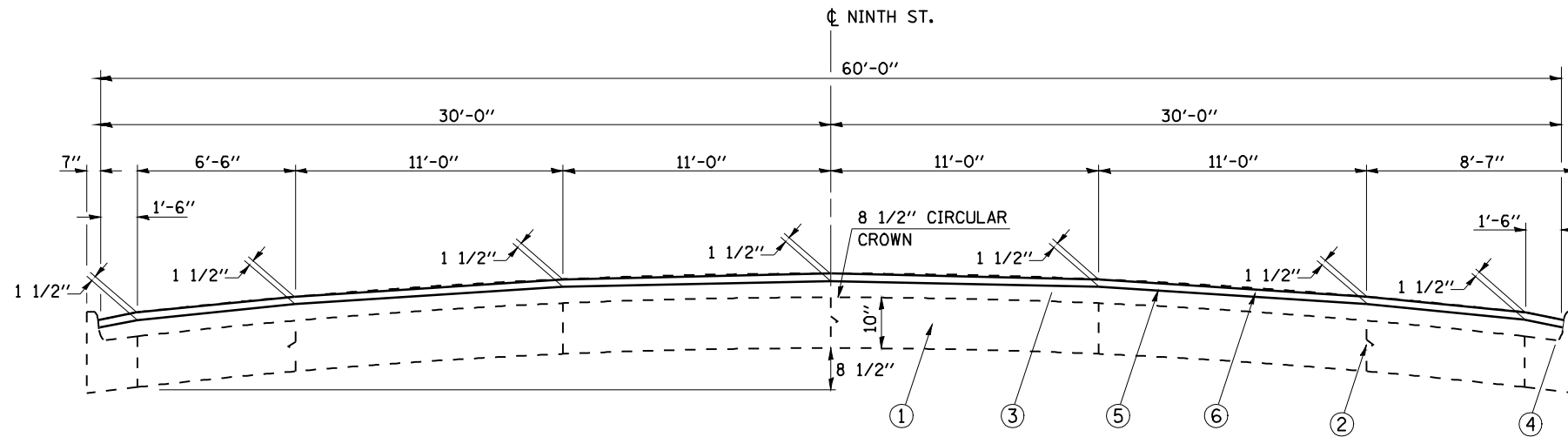
SUMMARY OF QUANTITIES

CODE NO.	PAY ITEM	UNITS	SFTY - 1D QUANTITY	100% STATE	50% CITY/50% STATE
				NINTH STREET QUANTITY	PARKING LANE QUANTITY
44000155	HOT-MIX ASPHALT SURFACE REMOVAL, 1 1/2"	SQ YD	10,285	9,956	329
40600200	BITUMINOUS MATERIALS (PRIME COAT)	TON	3.93	3.8	0.13
40600990	TEMPORARY RAMP	SQ YD	147	147	
40603540	POLYMERIZED HOT-MIX ASPHALT SURFACE COURSE, MIX "D", N70	TON	864	836	28
56109210	<i>WATER VALVES TO BE ADJUSTED</i>	<i>EACH</i>	<i>4</i>	<i>4</i>	
67100100	MOBILIZATION	L SUM	1	1	
70102632	TRAFFIC CONTROL AND PROTECTION, STANDARD 701602	L SUM	1	1	
70102635	TRAFFIC CONTROL AND PROTECTION, STANDARD 701701	L SUM	1	1	
70300100	SHORT-TERM PAVEMENT MARKING	FOOT	1224	1224	
* 78000300	THERMOPLASTIC PAVEMENT MARKING - LINE 5"	FOOT	2,706	2,706	
* 78000400	THERMOPLASTIC PAVEMENT MARKING - LINE 6"	FOOT	267		267
* 78000500	<i>THERMOPLASTIC PAVEMENT MARKING - LINE 8"</i>	<i>FOOT</i>	<i>199</i>		<i>199</i>
* 78000600	THERMOPLASTIC PAVEMENT MARKING - LINE 12"	FOOT	100		100
* 78004200	PREFORMED PLASTIC PAVEMENT MARKING, TYPE B - INLAID - LETTERS AND SYMBOLS	SQ FT	421.2	421.2	
* 78004220	PREFORMED PLASTIC PAVEMENT MARKING, TYPB B - INLAID - LINE 5"	FOOT	604	604	
* 78004230	PREFORMED PLASTIC PAVEMENT MARKING, TYPB B - INLAID - LINE 6"	FOOT	1,248	1,248	
* 78004280	PREFORMED PLASTIC PAVEMENT MARKING, TYPB B - INLAID - LINE 24"	FOOT	94	94	
* 78100100	RAISED REFLECTIVE PAVEMENT MARKER	EACH	95	95	
78300100	PAVEMENT MARKING REMOVAL	SQ FT	339	339	

**Specialty Items*

FILE NAME =	USER NAME = loughlinr1	DESIGNED -	REVISED -	STATE OF ILLINOIS DEPARTMENT OF TRANSPORTATION	SUMMARY OF QUANTITIES	F.A.P. RTE.	SECTION	COUNTY	TOTAL SHEETS	SHEET NO.	
ca\pw_work\PWIDOT\LAUGHLINRL\08122419\0	72C59-shc-S00.dgn	DRAWN -	REVISED -			•	103Z(RS-2)	SANGAMON	14	3	
PLOT SCALE = 48.0000' / IN.	CHECKED -	REVISED -				CONTRACT NO. 72C59					
PLOT DATE = Oct-16-2009 09:58AM	DATE -	REVISED -				ILLINOIS FED. AID PROJECT					

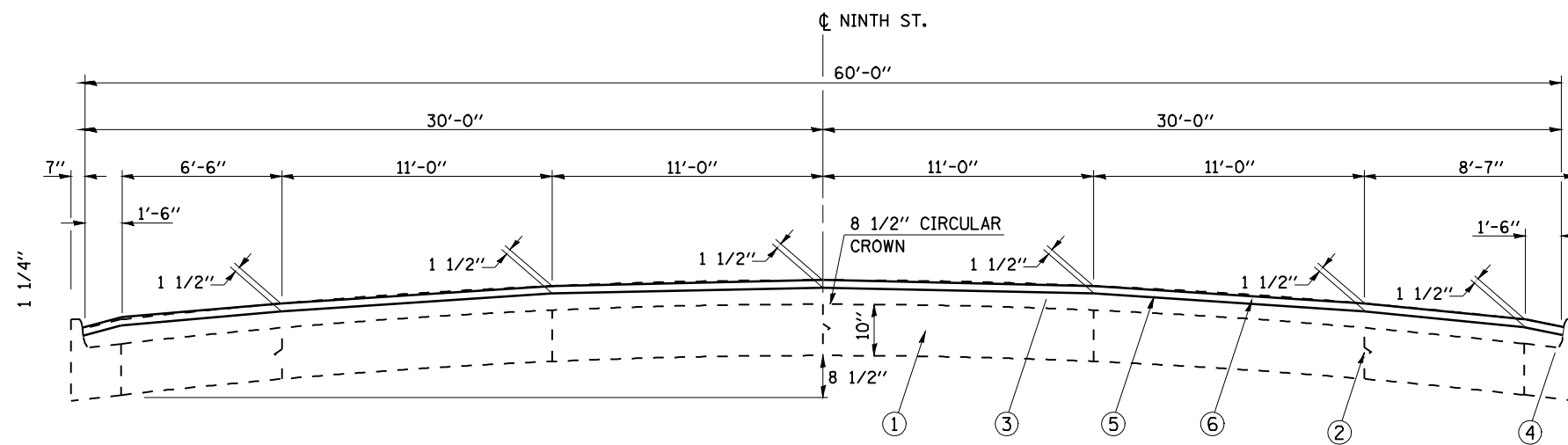
*- 664 (MAC ARTHUR BLVD.), 666 (NINTH ST.) *Rev.*



FAP 666 (NINTH STREET)
STA. 41+02.80 TO STA. 41+43.35
STA. 42+42.86 TO STA. 55+98.27

LEGEND

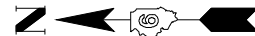
- ① EXISTING P.C.C. PAVEMENT
- ② EXISTING PAVEMENT JOINT
- ③ EXISTING BITUMINOUS CONCRETE SURFACE, 2 1/2"
- ④ EXISTING B-6.18 COMBINATION CONCRETE CURB & GUTTER
- ⑤ PROPOSED HOT MIX ASPHALT REMOVAL, 1 1/2" (1 1/2" DEPTH AT PAVEMENT JOINTS)
- ⑥ PROPOSED POLYMERIZED HOT MIX ASPHALT SURFACE COURSE, MIX "D", N70



FAP 666 (NINTH STREET)
STA. 41+43.35 TO STA. 42+42.86

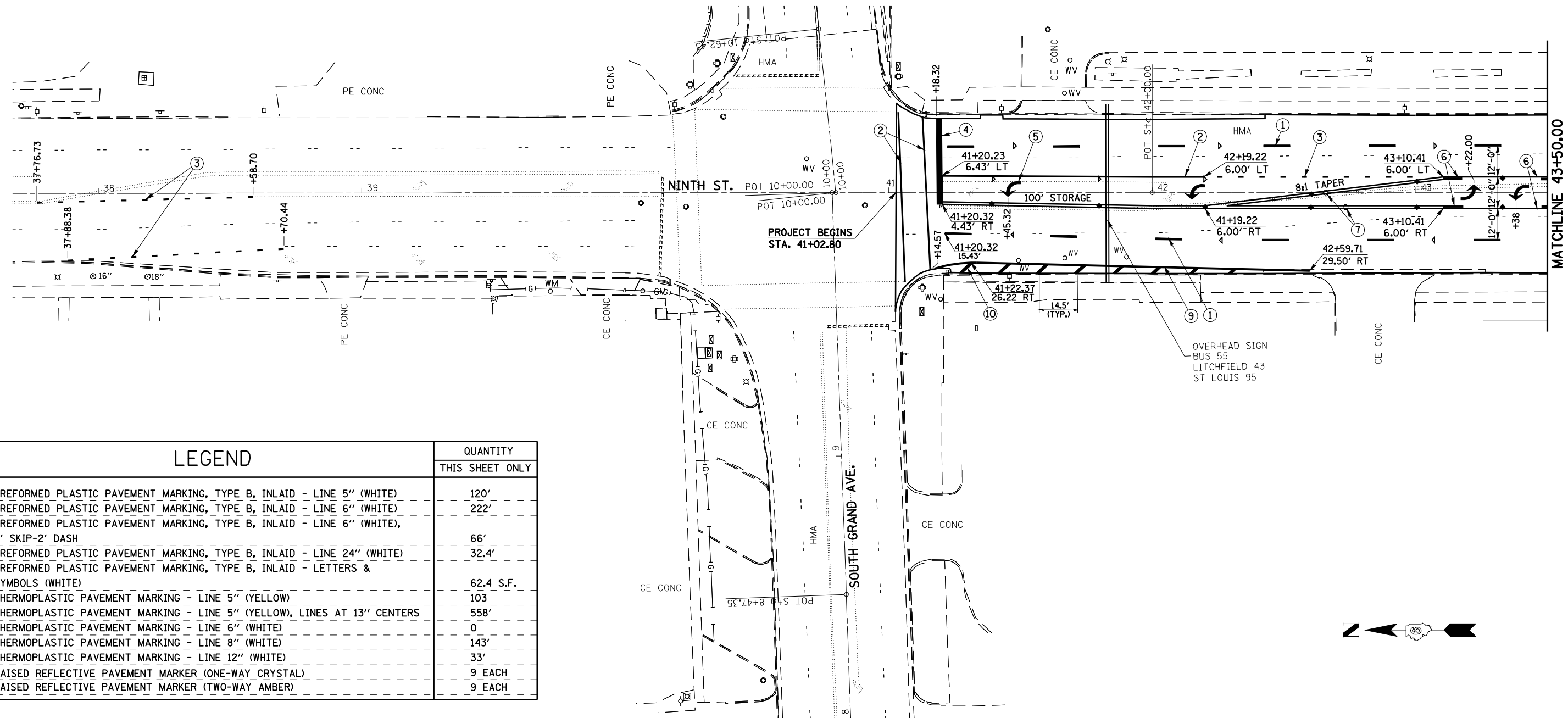
FILE NAME =	USER NAME = #USER#	DESIGNED - RTS	REVISED -	STATE OF ILLINOIS DEPARTMENT OF TRANSPORTATION	TYPICAL CROSS SECTION FAP 664 (NINTH STREET)			F.A.P. RTE.	SECTION	COUNTY	TOTAL SHEETS	SHEET NO.
#FILE#		DRAWN - RTS	REVISED -		666	103Z(RS-2)	SANGAMON	13	5			
	PLOT SCALE = #SCALE#	CHECKED -	REVISED -		SCALE: SHEET NO. 1 OF 1 SHEETS STA. TO STA.			CONTRACT NO. 72C59				
	PLOT DATE = #DATE#	DATE - 01-09-09	REVISED -		ILLINOIS FED. AID PROJECT							

<i>PAVING SCHEDULE</i>			
LOCATION	HMA SURFACE REMOVAL, 1 1/2"	BITUMINOUS MATERIALS (PRIME COAT)	POLYMERIZED HMA SURFACE COURSE, MIX "D", N70
	(SQ YD)	(TON)	(TON)
41+02.80 TO 43+50.00	1,619	0.62	136
43+50.00 TO 47+50.00	2,668	1.01	224
47+50.00 TO 52+00.00	2,996	1.14	252
52+00.00 TO 56+02.25	2,360	.90	198
SUB TOTALS =	<i>9,643</i>	<i>3.67</i>	<i>810</i>
PINE STREET	79	0.03	6.6
CEDAR STREET	77	0.03	6.5
SPRUCE STREET	157	0.06	13.2
SUB TOTALS =	<i>313</i>	<i>.12</i>	<i>26.3</i>
PARKING LANE			
52+71.00 TO 55+92.67	<i>329</i>	<i>.13</i>	<i>28</i>
OVERALL TOTALS	<i>10,285</i>	<i>3.92</i>	<i>864</i>



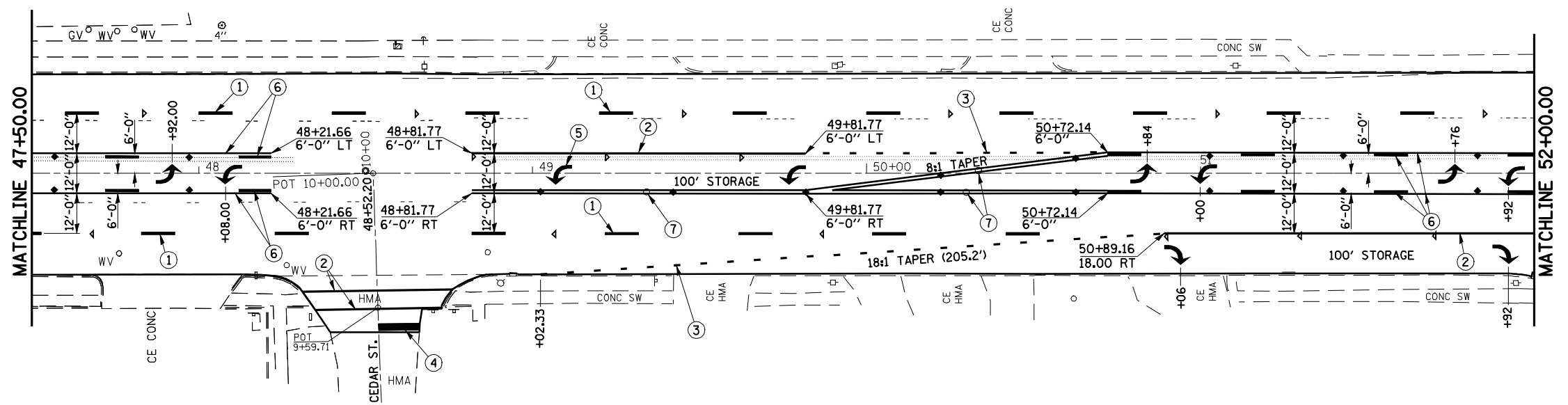
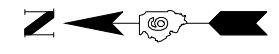
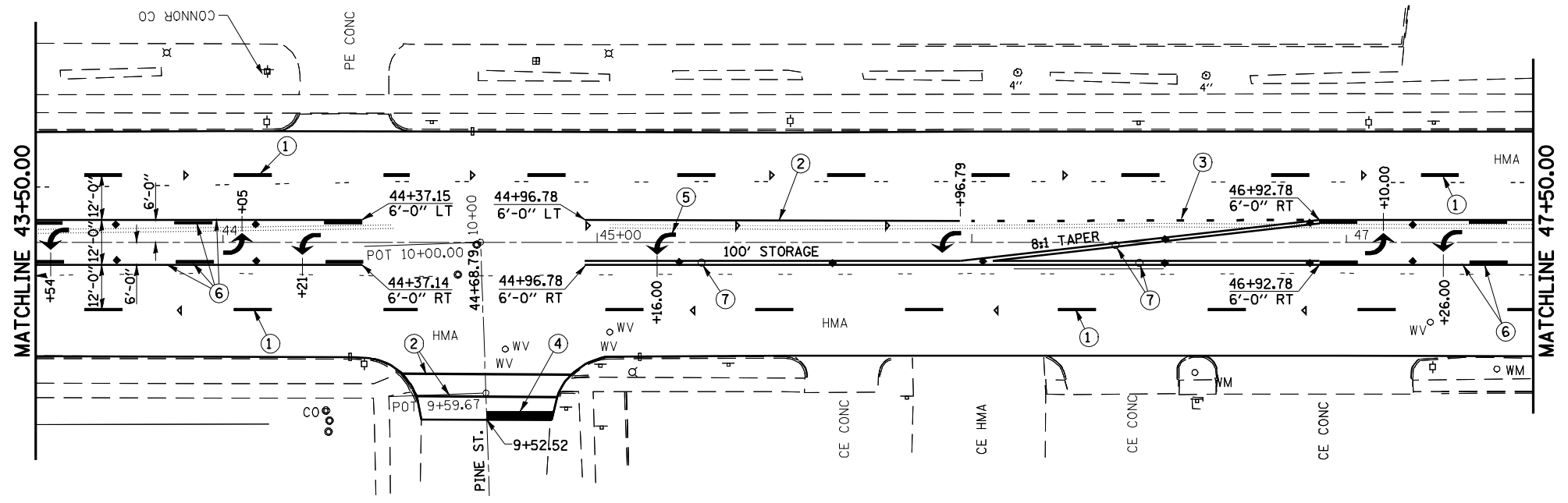
NOTES:

THE PROPOSED PAVEMENT STRIPING FOR NINTH STREET SOUTH OF SOUTH GRAND SHALL LINE UP WITH THE EXISTING PAVEMENT STRIPING NORTH OF SOUTH GRAND.
 THE PROPOSED STRIPING LAYOUT FOR THESE PLAN SHEETS SHALL BE REFERENCED OFF OF THE CENTERLINE OF PAVEMENT FOR NINTH STREET.



LEGEND		QUANTITY
		THIS SHEET ONLY
①	PREFORMED PLASTIC PAVEMENT MARKING, TYPE B, INLAID - LINE 5" (WHITE)	120'
②	PREFORMED PLASTIC PAVEMENT MARKING, TYPE B, INLAID - LINE 6" (WHITE)	222'
③	PREFORMED PLASTIC PAVEMENT MARKING, TYPE B, INLAID - LINE 6" (WHITE), 6' SKIP-2' DASH	66'
④	PREFORMED PLASTIC PAVEMENT MARKING, TYPE B, INLAID - LINE 24" (WHITE)	32.4'
⑤	PREFORMED PLASTIC PAVEMENT MARKING, TYPE B, INLAID - LETTERS & SYMBOLS (WHITE)	62.4 S.F.
⑥	THERMOPLASTIC PAVEMENT MARKING - LINE 5" (YELLOW)	103
⑦	THERMOPLASTIC PAVEMENT MARKING - LINE 5" (YELLOW), LINES AT 13" CENTERS	558'
⑧	THERMOPLASTIC PAVEMENT MARKING - LINE 6" (WHITE)	0
⑨	THERMOPLASTIC PAVEMENT MARKING - LINE 8" (WHITE)	143'
⑩	THERMOPLASTIC PAVEMENT MARKING - LINE 12" (WHITE)	33'
▷	RAISED REFLECTIVE PAVEMENT MARKER (ONE-WAY CRYSTAL)	9 EACH
◆	RAISED REFLECTIVE PAVEMENT MARKER (TWO-WAY AMBER)	9 EACH

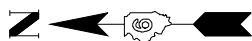




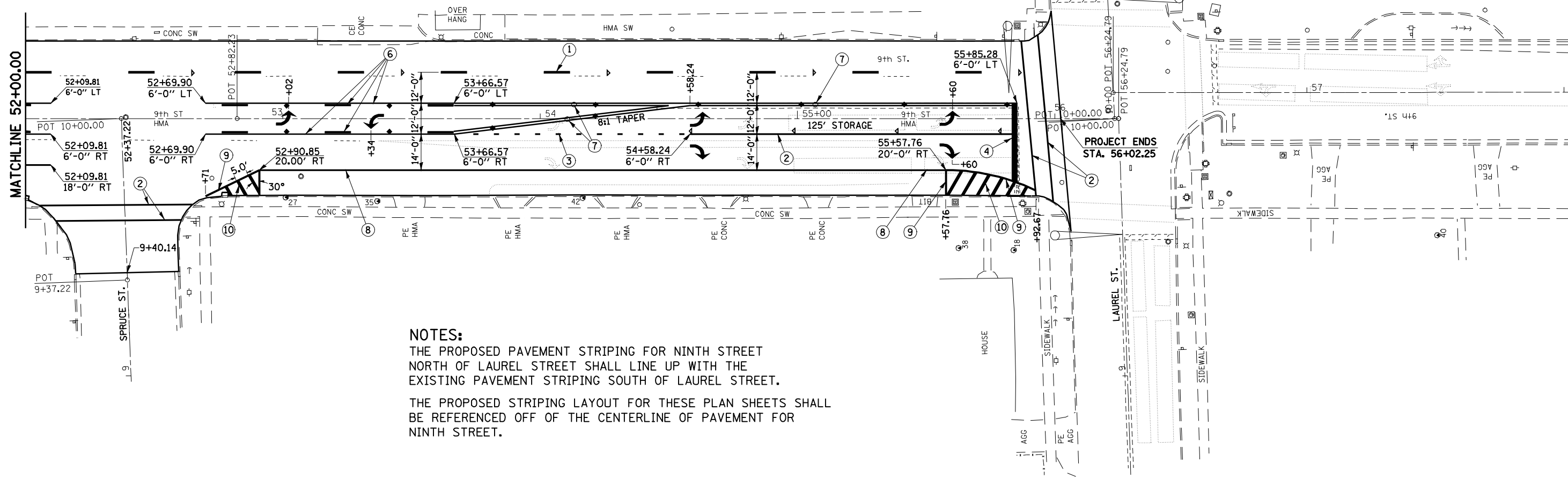
NOTE:
 THE PROPOSED STRIPING LAYOUT FOR THESE PLAN SHEETS SHALL BE REFERENCED OFF OF THE CENTERLINE OF PAVEMENT FOR NINTH STREET.

LEGEND		QUANTITY
		THIS SHEET ONLY
①	PREFORMED PLASTIC PAVEMENT MARKING, TYPE B, INLAID - LINE 5" (WHITE)	380'
②	PREFORMED PLASTIC PAVEMENT MARKING, TYPE B, INLAID - LINE 6" (WHITE)	477'
③	PREFORMED PLASTIC PAVEMENT MARKING, TYPE B, INLAID - LINE 6" (WHITE), 6' SKIP-2' DASH	94'
④	PREFORMED PLASTIC PAVEMENT MARKING, TYPE B, INLAID - LINE 24" (WHITE)	30.3'
⑤	PREFORMED PLASTIC PAVEMENT MARKING, TYPE B, INLAID - LETTERS & SYMBOLS (WHITE)	265.2 S.F.
⑥	THERMOPLASTIC PAVEMENT MARKING - LINE 5" (YELLOW)	888'
⑦	THERMOPLASTIC PAVEMENT MARKING - LINE 5" (YELLOW), LINES AT 13" CENTERS	290'
⑧	THERMOPLASTIC PAVEMENT MARKING - LINE 6" (WHITE)	0
⑨	THERMOPLASTIC PAVEMENT MARKING - LINE 8" (WHITE)	0
⑩	THERMOPLASTIC PAVEMENT MARKING - LINE 12" (WHITE)	0
▷	RAISED REFLECTIVE PAVEMENT MARKER (ONE-WAY CRYSTAL)	26 EACH
◆	RAISED REFLECTIVE PAVEMENT MARKER (TWO-WAY AMBER)	30 EACH

LEGEND	QUANTITY
	THIS SHEET ONLY
① PREFORMED PLASTIC PAVEMENT MARKING, TYPE B, INLAID - LINE 5" (WHITE)	104'
② PREFORMED PLASTIC PAVEMENT MARKING, TYPE B, INLAID - LINE 6" (WHITE)	367'
③ PREFORMED PLASTIC PAVEMENT MARKING, TYPE B, INLAID - LINE 6" (WHITE), 6' SKIP-2' DASH	22'
④ PREFORMED PLASTIC PAVEMENT MARKING, TYPE B, INLAID - LINE 24" (WHITE)	31.0
⑤ PREFORMED PLASTIC PAVEMENT MARKING, TYPE B, INLAID - LETTERS & SYMBOLS (WHITE)	93.6 S. F.
⑥ THERMOPLASTIC PAVEMENT MARKING - LINE 5" (YELLOW)	257'
⑦ THERMOPLASTIC PAVEMENT MARKING - LINE 5" (YELLOW), LINES AT 13" CENTERS	610'
⑧ THERMOPLASTIC PAVEMENT MARKING - LINE 6" (WHITE)	267'
⑨ THERMOPLASTIC PAVEMENT MARKING - LINE 8" (WHITE)	56'
⑩ THERMOPLASTIC PAVEMENT MARKING - LINE 12" (WHITE)	67'
▷ RAISED REFLECTIVE PAVEMENT MARKER (ONE-WAY CRYSTAL)	26 EACH
◆ RAISED REFLECTIVE PAVEMENT MARKER (TWO-WAY AMBER)	30 EACH



EXIST. CURVE95
 PI STA. =11+12.34
 $\Delta = 4^\circ 55' 54''$ (LT)
 $D = 9^\circ 50' 15''$
 $R = 582.42'$
 $T = 25.08'$
 $L = 50.13'$
 $E = 0.54'$
 $e =$ -----
 $T.R. =$ -----
 $S.E. RUN =$ -----
 $P.C. STA. = 10+87.25$
 $P.T. STA. = 11+37.39$

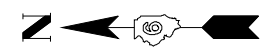
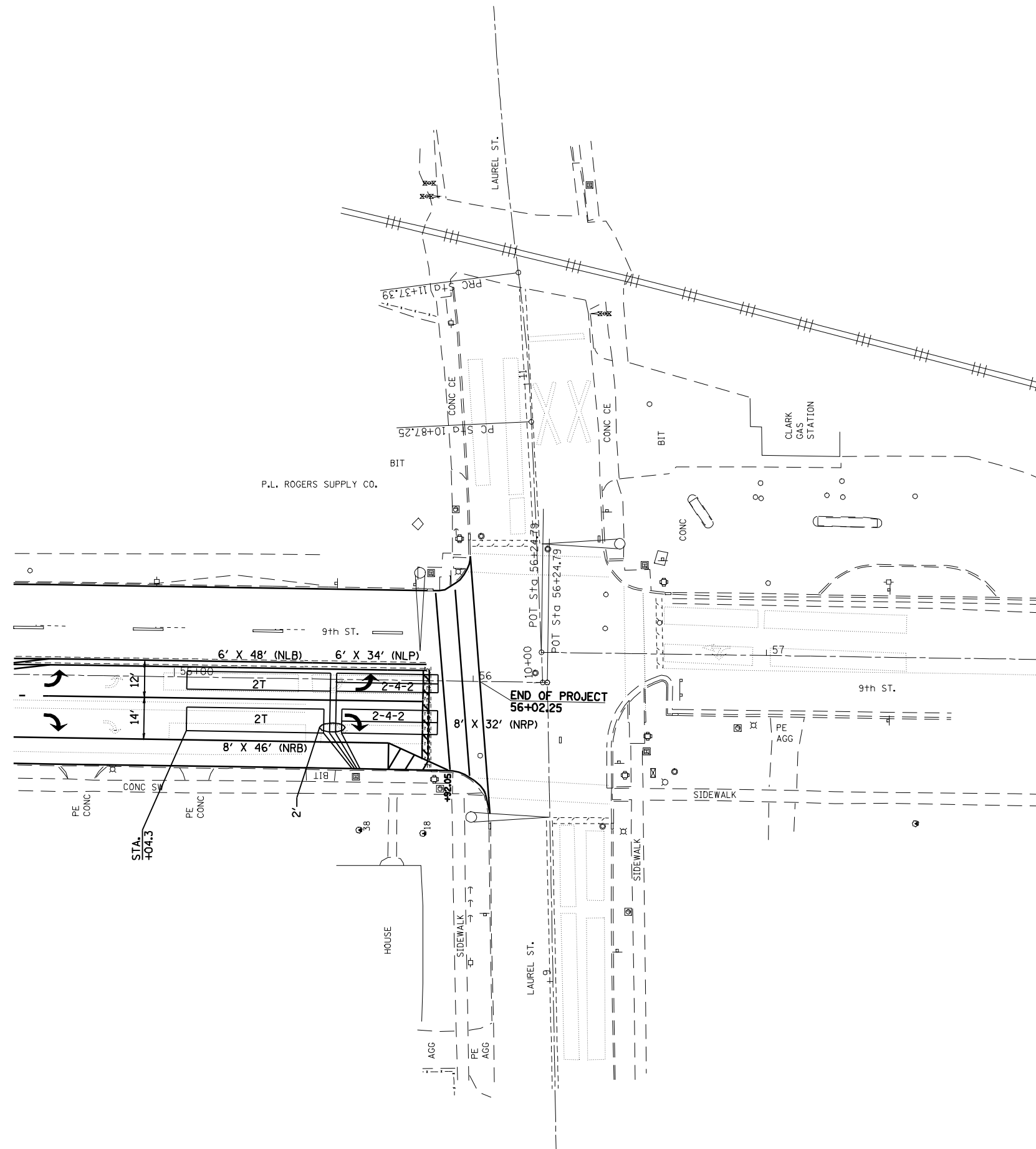


NOTES:
 THE PROPOSED PAVEMENT STRIPING FOR NINTH STREET NORTH OF LAUREL STREET SHALL LINE UP WITH THE EXISTING PAVEMENT STRIPING SOUTH OF LAUREL STREET.
 THE PROPOSED STRIPING LAYOUT FOR THESE PLAN SHEETS SHALL BE REFERENCED OFF OF THE CENTERLINE OF PAVEMENT FOR NINTH STREET.

TRAFFIC SIGNAL QUANTITIES

QUANTITY	UNIT	ITEM
526.0	FOOT	DETECTOR LOOP, TYPE I

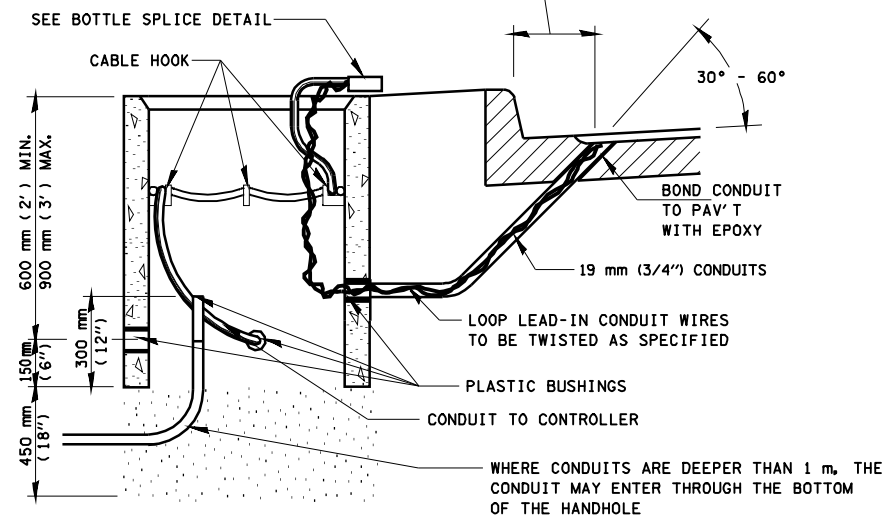
LOOPS NLF AND NRF SHALL NOT BE REPLACED



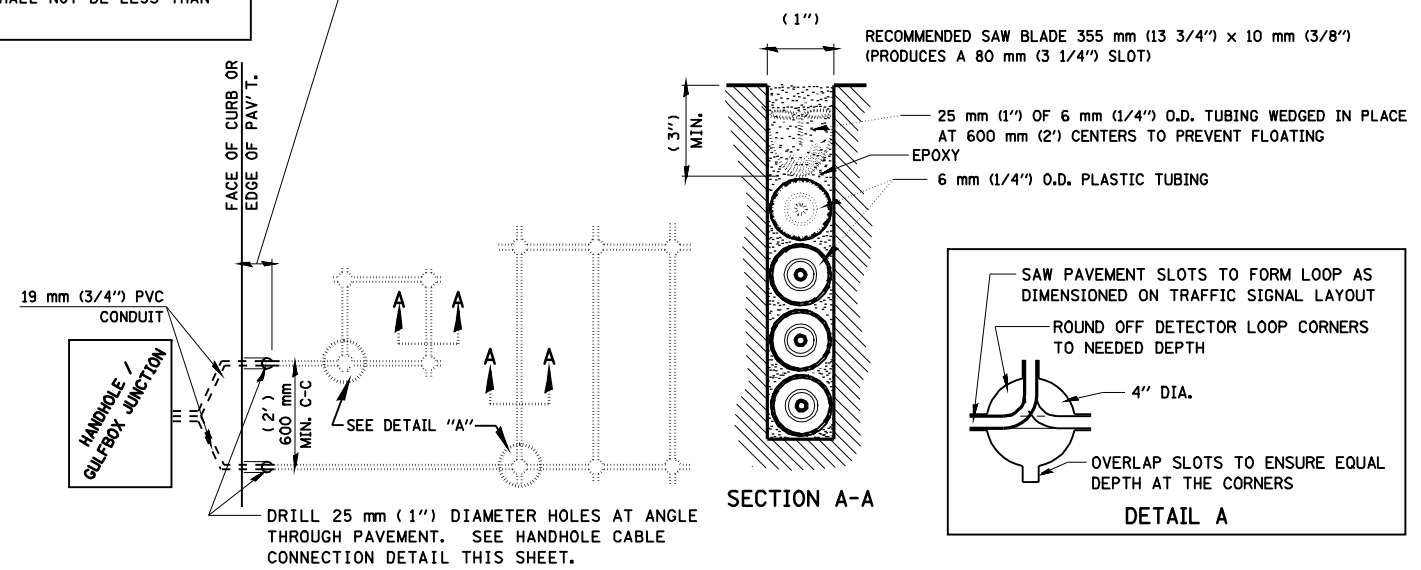
FILE NAME = *FILEL*	USER NAME = *USER*	DESIGNED -	REVISED -	STATE OF ILLINOIS DEPARTMENT OF TRANSPORTATION	DETECTOR LOOPS FOR 9TH ST.		F.A.P. RTE. 666	SECTION 103Z(RS-2)	COUNTY SANGAMON	TOTAL SHEETS 13	SHEET NO. 10	
	PLOT SCALE = *SCALE*	DRAWN -	REVISED -		SCALE:	SHEET NO. 1 OF 4 SHEETS	STA.	TO STA.	CONTRACT NO. 72C59			
	PLOT DATE = *DATE*	CHECKED -	REVISED -									
		DATE -	REVISED -		FED. ROAD DIST. NO. ILLINOIS FED. AID PROJECT							

LENGTH OF SLACK FOR LOOP LEAD-INS SHALL PROVIDE FOR MAKING THE SPLICE ON TOP OF THE HANDHOLE AND ONE COMPLETE LOOP OF THE INTERIOR OF THE HANDHOLE, THE SPLICE SHALL BE SUPPORTED BY A CABLE HOOK.

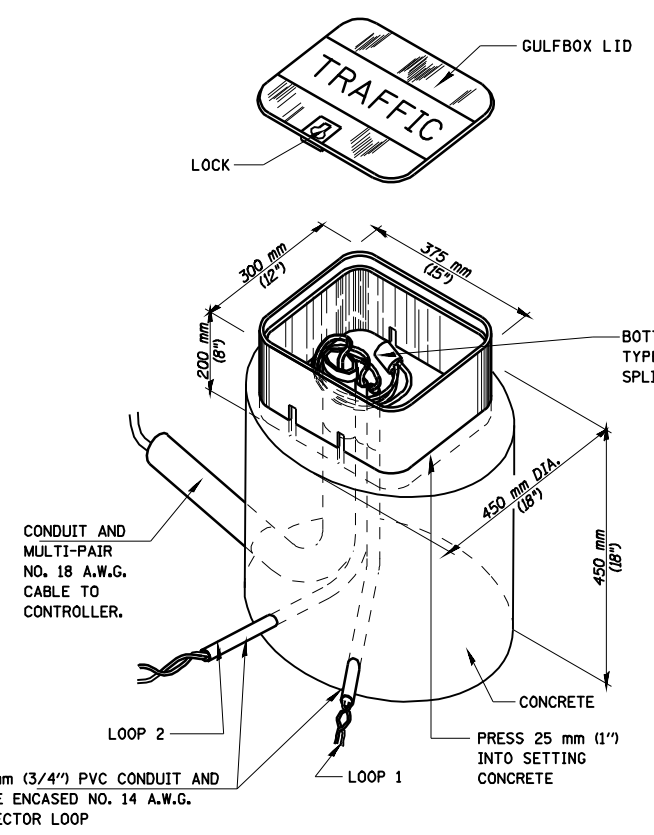
THE LOOP LEAD-IN CONDUIT HOLES SHALL BE PLACED AS CLOSE TO THE CURB AS POSSIBLE TO PERMIT SAW OVERLAP WITHOUT SCARRING FACE OF CURB.
IN NON-CURB LOCATIONS THE DISTANCE SHALL NOT BE LESS THAN 150 mm (6").



HANDHOLE CABLE CONNECTIONS

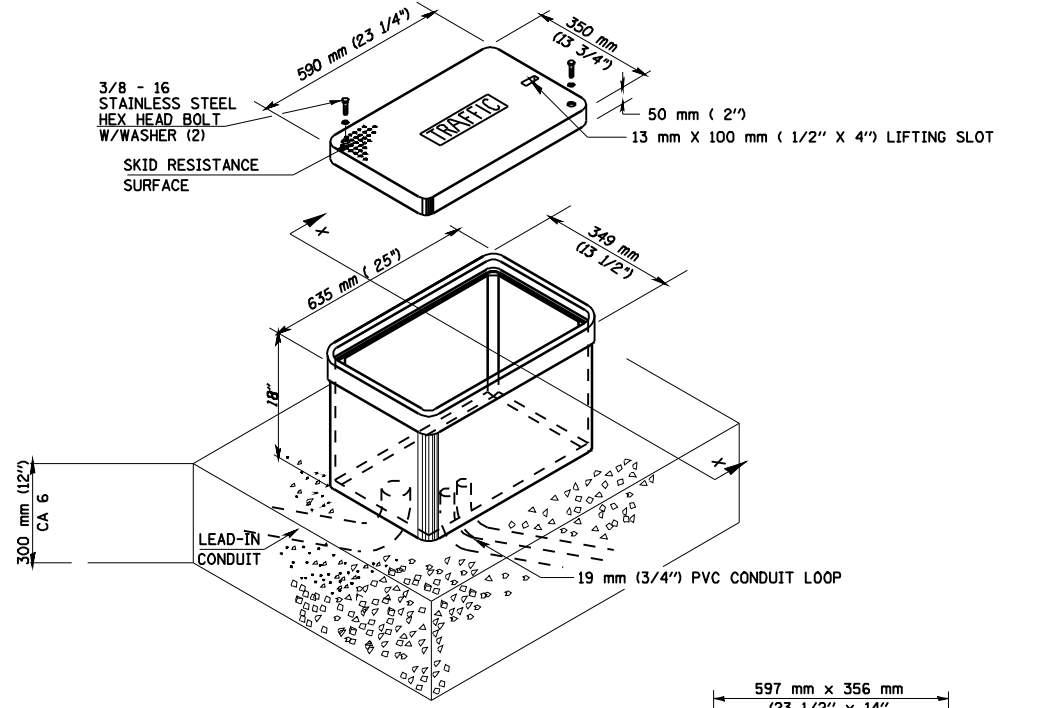


PAVEMENT SAWING DETAIL FOR TUBE ENCASED DETECTOR LOOP WIRE

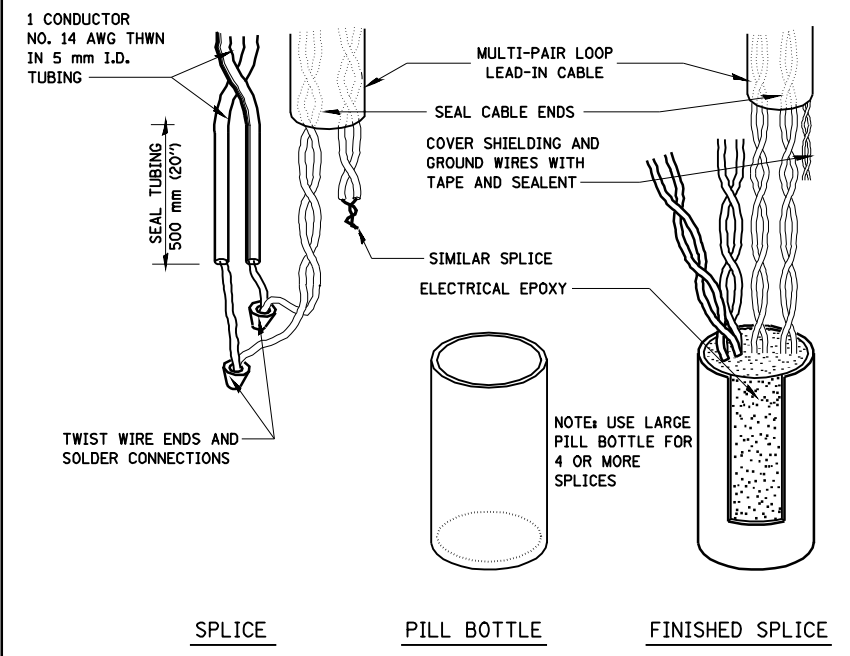
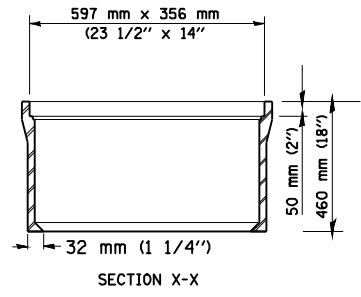


GULFBOX JUNCTION DETAIL

(SHOWING CONNECTION OF TUBE-ENCASED DETECTOR LOOP TO MULTI-PAIR LEAD-IN CABLE)



JUNCTION BOX (SPECIAL)



BOTTLE SPLICE DETAIL

TRAFFIC SIGNAL PLAN LEGEND

EXISTING	PROPOSED	DESCRIPTION
		SIGNAL HEAD
		SIGNAL HEAD WITH BACKPLATE
		TEMPORARY SIGNAL HEAD
		PEDESTRIAN SIGNAL HEAD
		PEDESTRIAN PUSHBUTTON DETECTOR
		DETECTOR LOOP
		QUADRAPOLE DETECTOR LOOP
		SIGNAL POST
		ALUMINUM MAST ARM ASSEMBLY AND POLE
		STEEL MAST ARM ASSEMBLY AND POLE
		WOOD POLE
		WOOD POLE WITH GUY
		SERVICE INSTALLATION
		CONTROLLER
		HANDHOLE
		HEAVY DUTY HANDHOLE
		DOUBLE HANDHOLE
		JUNCTION BOX
		GULFBOX JUNCTION
		AERIAL CABLE
		CONDUIT LENGTH - CONSTRUCTION (T=TRENCH P=PUSHED A=AUGERED E=EXISTING) SIZE - TYPE (S=STEEL P=PVC F=FIBER DUCT U=UNI-DUCT)
		CONDUIT SPLICE
		SPAN WIRE / TETHER WIRE
		21 SIDEWALK REMOVAL IN SQ M (SQ FT)
		9 PC CONC SDWLK 100 mm IN SQ M (SQ YD)
		12 PC CONC SDWLK 100 mm SPECIAL IN SQ M (SQ YD)

TRAFFIC SIGNAL WIRING DIAGRAM LEGEND

EXISTING	PROPOSED	DESCRIPTION
		200 mm (8") SIGNAL SECTION
		300 mm (12") SIGNAL SECTION
		DIRECTIONAL SIGNAL SECTION
		225 mm (9") PEDESTRIAN SIGNAL FACE
		300 mm (12") PEDESTRIAN SIGNAL FACE
		SIGNAL FACE WITH BACKPLATE
		PROGRAMMED SIGNAL SECTION
		SIGNAL SECTION WITH LOUVRE
		DUAL-INDICATION SIGNAL SECTION
		INDUCTION DETECTOR LOOP
		QUADRAPOLE DETECTOR LOOP
		DIRECT-CONNECTED LOOP LEAD-IN (TWISTED)
		ELECTRIC CABLE DENOTING NUMBER OF CONDUCTORS
		ELECTRIC CABLE TO BE REMOVED
		ELECTRIC CABLE IDENTIFIER TAPE CODES (R= RED W= WHITE Y= YELLOW G= GREEN B= BLUE O= ORANGE)
		PEDESTRIAN PUSHBUTTON DETECTOR
		VIDEO DETECTION CAMERA
		EMERGENCY VEHICLE PREEMPTOR

