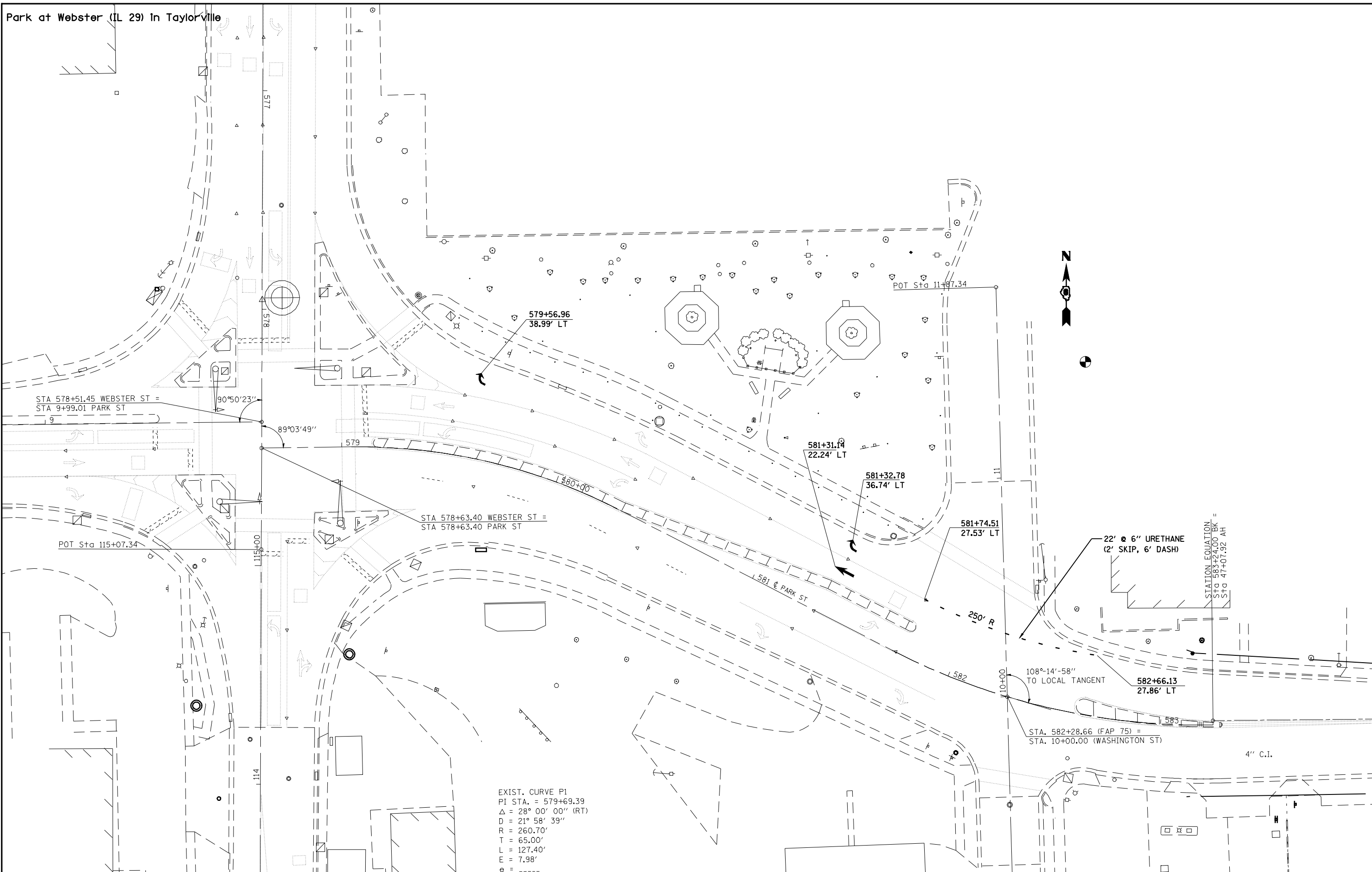


Park at Webster (IL 29) In Taylorville



EXIST. CURVE P1
 PI STA. = 579+69.39
 Δ = 28° 00' 00'' (RT)
 D = 21° 58' 39''
 R = 260.70'
 T = 65.00'
 L = 127.40'
 E = 7.98'

FILE NAME =	USER NAME = laughlinr1
e:\pwork\PWIDOT\LAUGHLINRL\0150723\0672C99-sht-intersections.dgn	
PLOT SCALE = 40.0000' / IN.	
PLOT DATE = Oct-22-2009 09:21:08AM	

DESIGNED -	REVISED -
DRAWN -	REVISED -
CHECKED -	REVISED -
DATE -	REVISED -

STATE OF ILLINOIS
 DEPARTMENT OF TRANSPORTATION

PAVEMENT MARKING DETAILS			
CHRISTIAN COUNTY, LOCATION #5			
SCALE:	SHEET NO.	OF SHEETS	STA. TO STA.

F.A. RTE.	SECTION	COUNTY	TOTAL SHEETS	SHEET NO.
VAR	D-6 PAVT MARKING 2010	VARIOUS	37	24
CONTRACT NO. 72C99			ILLINOIS FED. AID PROJECT	