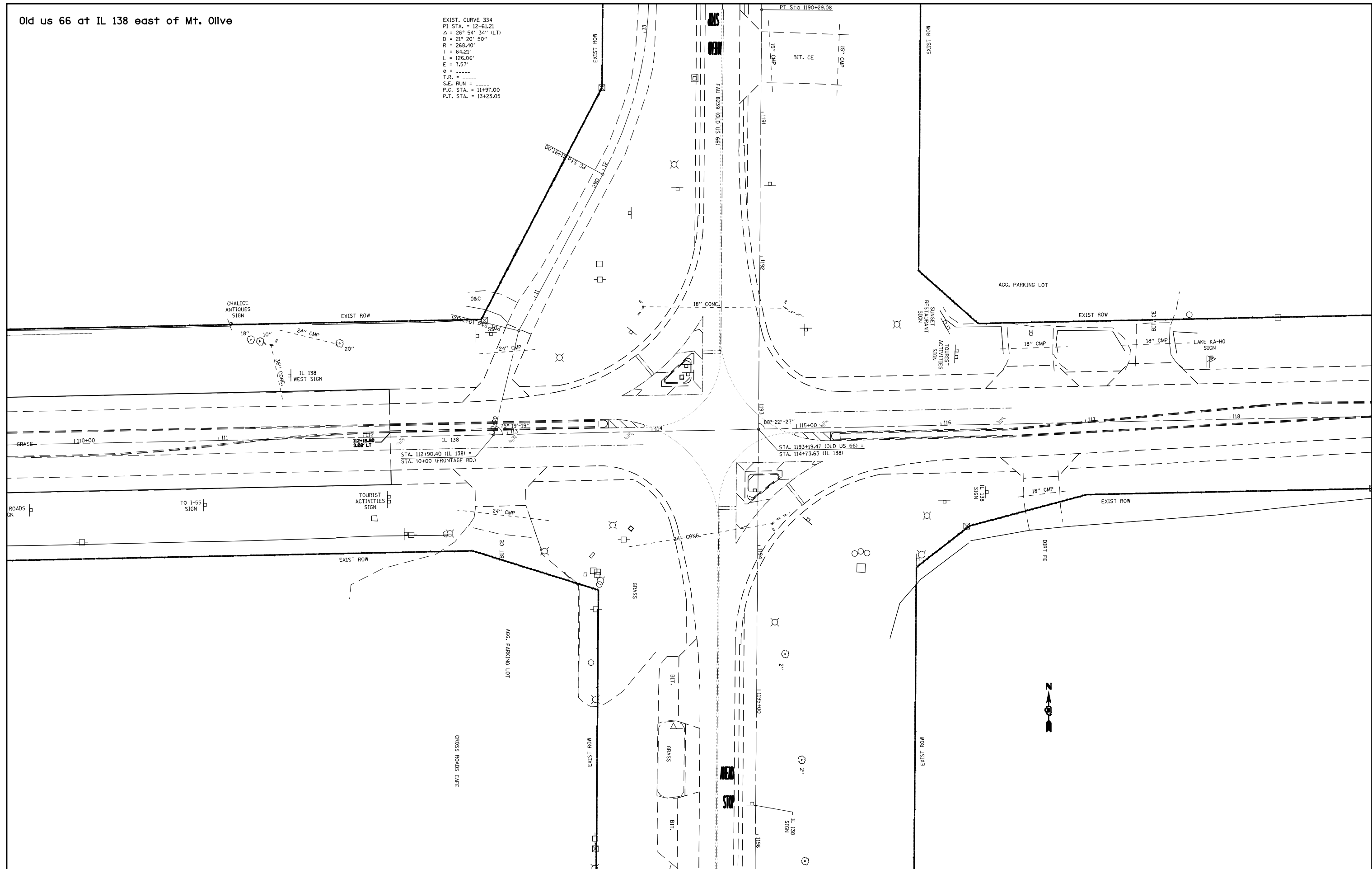


Old us 66 at IL 138 east of Mt. Olive

EXIST. CURVE 334
 PI STA. = 12+61.21
 $\Delta = 26^\circ 54' 34''$ (LT)
 $D = 21^\circ 20' 50''$
 $R = 268.40'$
 $T = 64.21'$
 $L = 126.06'$
 $E = 7.57'$
 $\theta = \dots$
 $T.R. = \dots$
 $S.E. RUN = \dots$
 $P.C. STA. = 11+97.00$
 $P.T. STA. = 13+23.05$



FILE NAME =	USER NAME = laughlinr1	DESIGNED -	REVISED -
e:\pwork\pwork\LAUGHLINRL\0150723\0672C99-sht-intersections.dgn		DRAWN -	REVISED -
PLOT SCALE = 60.0000' / IN.		CHECKED -	REVISED -
PLOT DATE = Oct-22-2009 09:21:41AM		DATE -	REVISED -

**STATE OF ILLINOIS
 DEPARTMENT OF TRANSPORTATION**

**PAVEMENT MARKING DETAILS
 MACOUPIN COUNTY; LOCATION #8**

F.A. RTE.	SECTION	COUNTY	TOTAL SHEETS	SHEET NO.
VAR	D-6 PAVT MARKING 2010	VARIOUS	37	27
CONTRACT NO. 72C99				
ILLINOIS FED. AID PROJECT				

SCALE: SHEET NO. OF SHEETS STA. TO STA.