

STATE OF ILLINOIS
DEPARTMENT OF TRANSPORTATION
DIVISION OF HIGHWAYS

**PROPOSED
HIGHWAY PLANS**

FAP ROUTE 761 (IL 108)
SECTION 107BR-7

MACOUPIN COUNTY
C-96-151-10

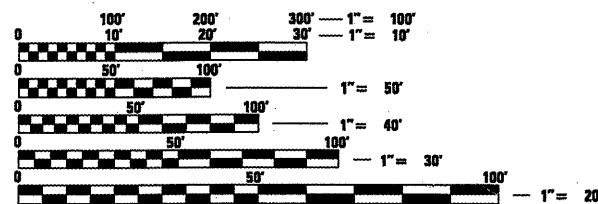
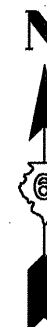
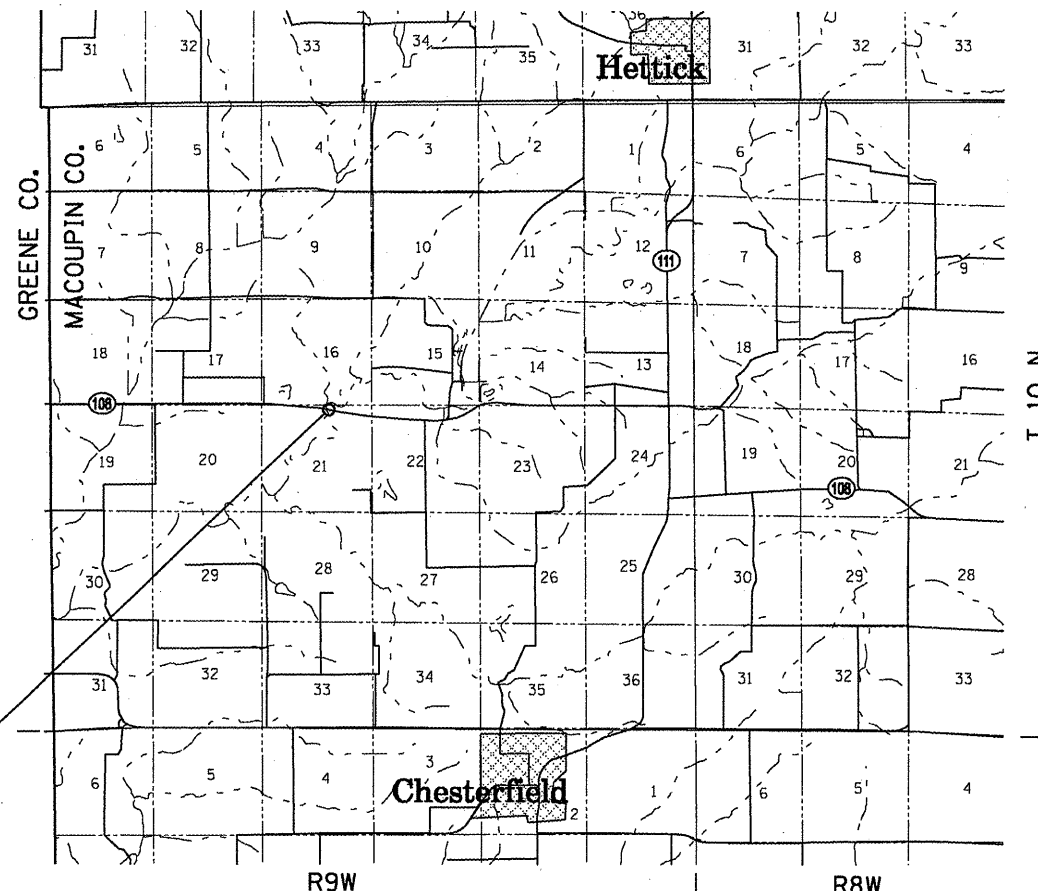
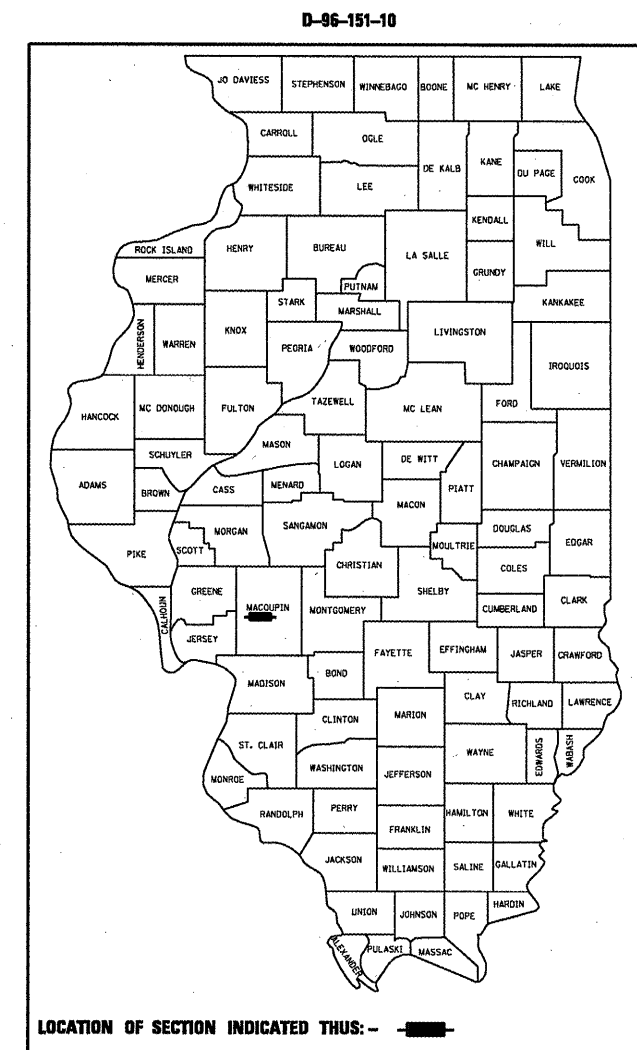
F.A.P. RTE.	SECTION	COUNTY	TOTAL SHEETS	SHEET NO.
761	107BR-7	MACOUPIN	8	1
		ILLINOIS	CONTRACT NO. 72D27	

INDEX OF SHEETS

- 1 COVER SHEET
- 2 GENERAL NOTES
- 3 SUMMARY OF QUANTITIES
- 4-6 EXISTING TRAFFIC CONTROL
- 7-8 BRIDGE PLANS

STANDARDS

- 701001-02
- 701006-03
- 701201-03
- 701311-03
- 701901-01



FULL SIZE PLANS HAVE BEEN PREPARED USING STANDARD ENGINEERING SCALES. REDUCED SIZED PLANS WILL NOT CONFORM TO STANDARD SCALES. IN MAKING MEASUREMENTS ON REDUCED PLANS, THE ABOVE SCALES MAY BE USED.

J.U.L.I.E.
JOINT UTILITY LOCATION INFORMATION FOR EXCAVATION
1-800-992-0123
OR 811

EX. SN 059-0034
IL 108 OVER HODGES CREEK

LOCATION MAP

NET LENGTH OF PROJECT = 561.28 FEET = 0.106 MILES



PROJECT ENGINEER: SAL MADONIA (217) 782-4761
PROJECT MANAGER: KEN ANDERSON (217) 5247546

CONTRACT NO. 72D27

STATE OF ILLINOIS
DEPARTMENT OF TRANSPORTATION
DIVISION OF HIGHWAYS

SUBMITTED *October 9, 2009*
Ray E. Duda
DEPUTY DIRECTOR OF HIGHWAYS, REGION ENGINEER

December 4, 2009
Charles J. Ingrosso
ENGINEER OF DESIGN AND ENVIRONMENT

December 4, 2009
Christine M. Reed
DIRECTOR OF HIGHWAYS, CHIEF ENGINEER

**PRINTED BY THE AUTHORITY
OF THE STATE OF ILLINOIS**

GENERAL NOTES

1. PLAN DIMENSIONS AND DETAILS RELATIVE TO EXISTING STRUCTURE HAVE BEEN TAKEN FROM EXISTING PLANS AND ARE SUBJECT TO NOMINAL CONSTRUCTION VARIATIONS. IT SHALL BE THE CONTRACTOR'S RESPONSIBILITY TO VERIFY SUCH DIMENSIONS AND DETAILS IN THE FIELD AND MAKE NECESSARY APPROVED ADJUSTMENTS PRIOR TO CONSTRUCTION OR ORDERING OF MATERIALS. SUCH VARIATIONS SHALL NOT BE CAUSE FOR ADDITIONAL COMPENSATION OR A CHANGE IN THE SCOPE OF THE WORK. HOWEVER, THE CONTRACTOR WILL BE PAID FOR THE QUANTITY ACTUALLY FURNISHED AT THE UNIT PRICE FOR THE WORK.

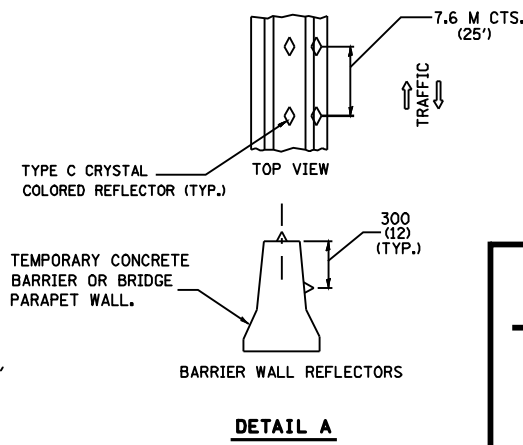
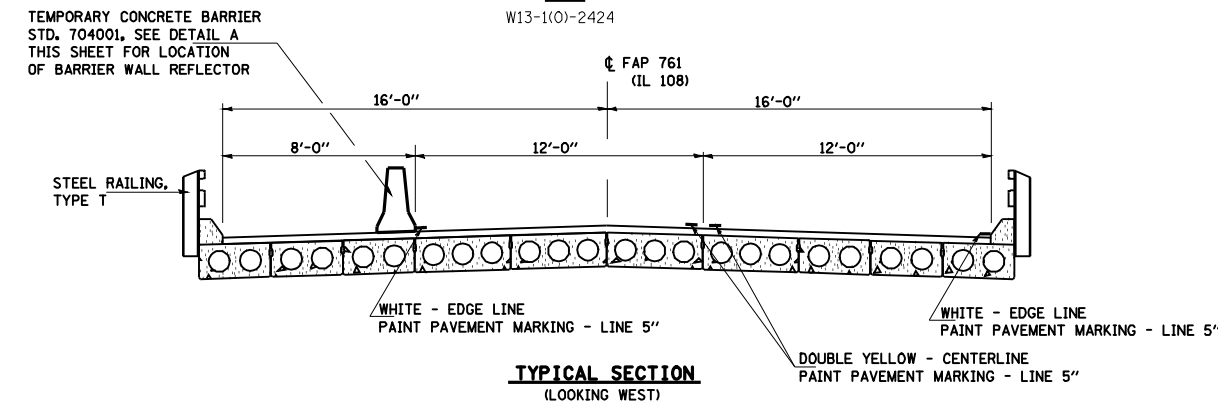
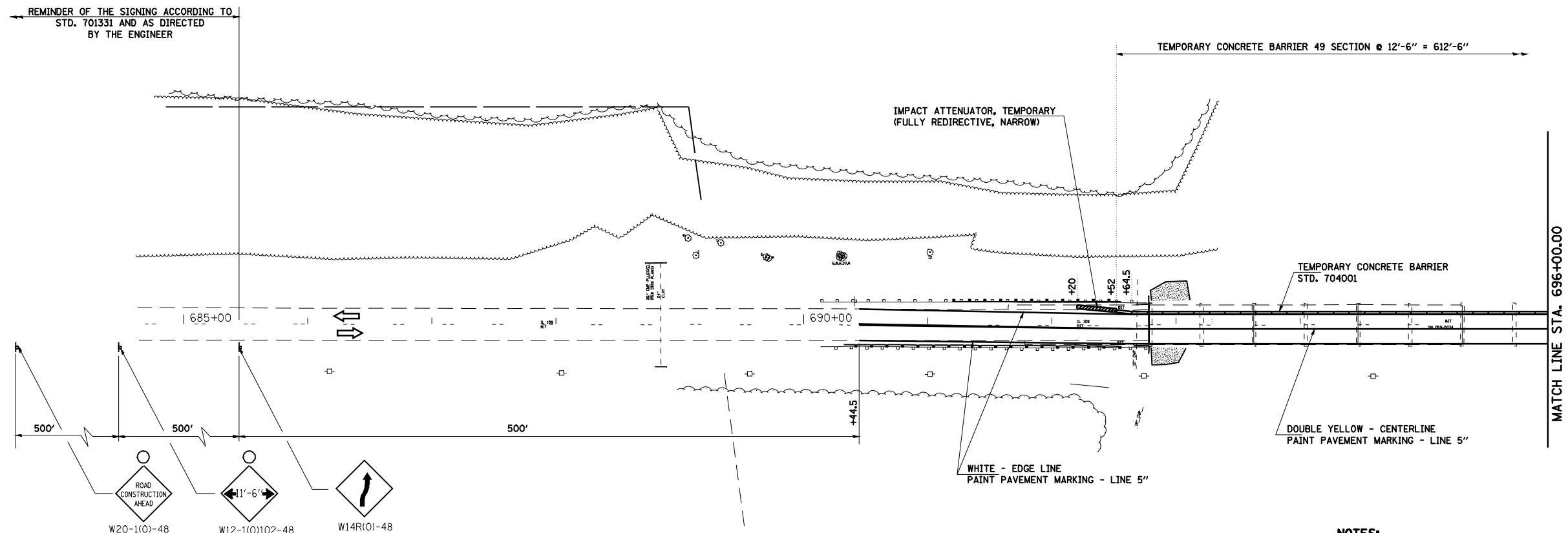
DISTRICT SIX	
EXAMINED	<u><i>Sam & Haring</i></u> 20 <u>09</u>
OPERATIONS ENGINEER	
EXAMINED	<u><i>Sam & Haring</i></u> 20 <u>09</u>
PROGRAM IMPLEMENTATION ENGINEER	
EXAMINED	<u>10/7/09</u> 20 <u>09</u>
<u><i>ARML</i></u>	
PROGRAM DEVELOPMENT ENGINEER	

ILLINOIS DEPARTMENT OF TRANSPORTATION
SUMMARY OF QUANTITIES

CODED PAY ITEM	ITEM	UNITS	100% STATE SFTY-2A	TOTAL QUANTITY
50500405	FURNISHING AND ERECTING STRUCTURAL STEEL	POUND	29530	29530
67100100	MOBILIZATION	L SUM	1	1
70103700	TRAFFIC CONTROL COMPLETE	L SUM	1	1

NOTE:
THIS SHEET FOR INFORMATION ONLY

- SYMBOLS**
- ⊞ SIGN ON PORTABLE OR PERMANENT SUPPORT
 - ⊙ DRUM WITH STEADY BURNING LIGHT
 - ▬ TEMPORARY CONCRETE BARRIER WALL
 - ▬▬▬ IMPACT ATTENUATOR, NARROW



NOTES:
ALL TRAFFIC CONTROL DEVICES PLACED UNDER THIS CONTRACT SHALL BE LEFT IN PLACE AT COMPLETION OF THIS PROJECT AND SHALL BECOME PROPERTY OF THE STATE OF ILLINOIS. ALL TRAFFIC CONTROL DEVICES SHALL BE NEW WHEN INSTALLED AND SHALL BE IN GOOD CONDITION AT THE COMPLETION OF THE PROJECT. ANY DEVICES THAT ARE DAMAGED DURING THE PROJECT OR IN LESS THAN GOOD CONDITION SHALL BE REPLACED AT THE CONTRACTOR'S EXPENSE.

NOTE:
EXISTING TRAFFIC CONTROL IN PLACE AT THIS TIME TO REMAIN IN PLACE DURING AND AFTER REPAIRS ARE COMPLETED TO THE STRUCTURE.

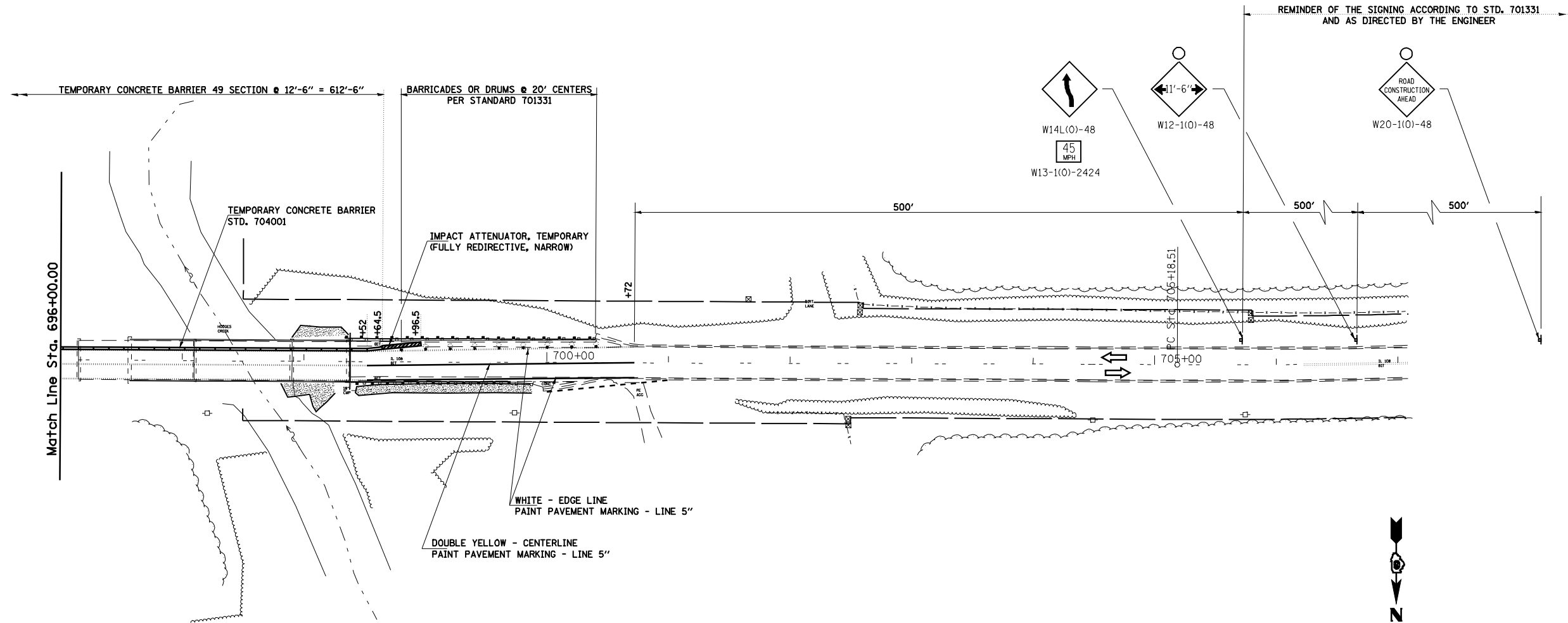
FILE NAME =	USER NAME = laughlinr1	DESIGNED -	REVISED -	STATE OF ILLINOIS DEPARTMENT OF TRANSPORTATION	EXISTING TRAFFIC CONTROL				F.A.P. RTE.	SECTION	COUNTY	TOTAL SHEETS	SHEET NO.
e:\pwork\pwork\LAUGHLINRL\0162470\0672D27-shsStage_1108.dgn		DRAWN -	REVISED -		761	107BR-7	MACOUPIN	8	4				
PLOT SCALE = 100.0000' / IN.		CHECKED -	REVISED -		CONTRACT NO. 72D27				ILLINOIS FED. AID PROJECT				
PLOT DATE = Oct-13-2009 11:19:30AM		DATE -	REVISED -		SCALE:	SHEET NO.	OF SHEETS	STA.	TO STA.				

NOTE:

THIS SHEET FOR INFORMATION ONLY

SYMBOLS

- ⊥ SIGN ON PORTABLE OR PERMANENT SUPPORT
- DRUM WITH STEADY BURNING LIGHT
- ▬ TEMPORARY CONCRETE BARRIER WALL
- ▬▬▬ IMPACT ATTENUATOR



NOTE:

EXISTING TRAFFIC CONTROL IN PLACE AT THIS TIME TO REMAIN IN PLACE DURING AND AFTER REPAIRS ARE COMPLETED TO THE STRUCTURE.

FILE NAME =	USER NAME = laughlinr1	DESIGNED -	REVISED -
er:\pwork\PWIDOT\LAUGHLINRL\0162470\0672D27-sh1Stage-1108.dgn		DRAWN -	REVISED -
	PLOT SCALE = 100.0000' / IN.	CHECKED -	REVISED -
	PLOT DATE = Oct-13-2009 11:19:32AM	DATE -	REVISED -

**STATE OF ILLINOIS
DEPARTMENT OF TRANSPORTATION**

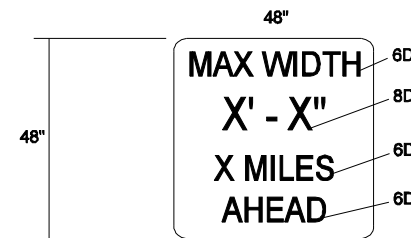
EXISTING TRAFFIC CONTROL

SCALE: SHEET NO. OF SHEETS STA. TO STA.

F.A.P. RTE.	SECTION	COUNTY	TOTAL SHEETS	SHEET NO.
761	107BR-7	MACOUPIN	8	5
CONTRACT NO. 72D27				
ILLINOIS FED. AID PROJECT				

NOTE:

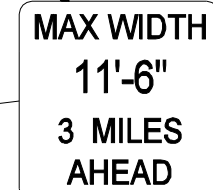
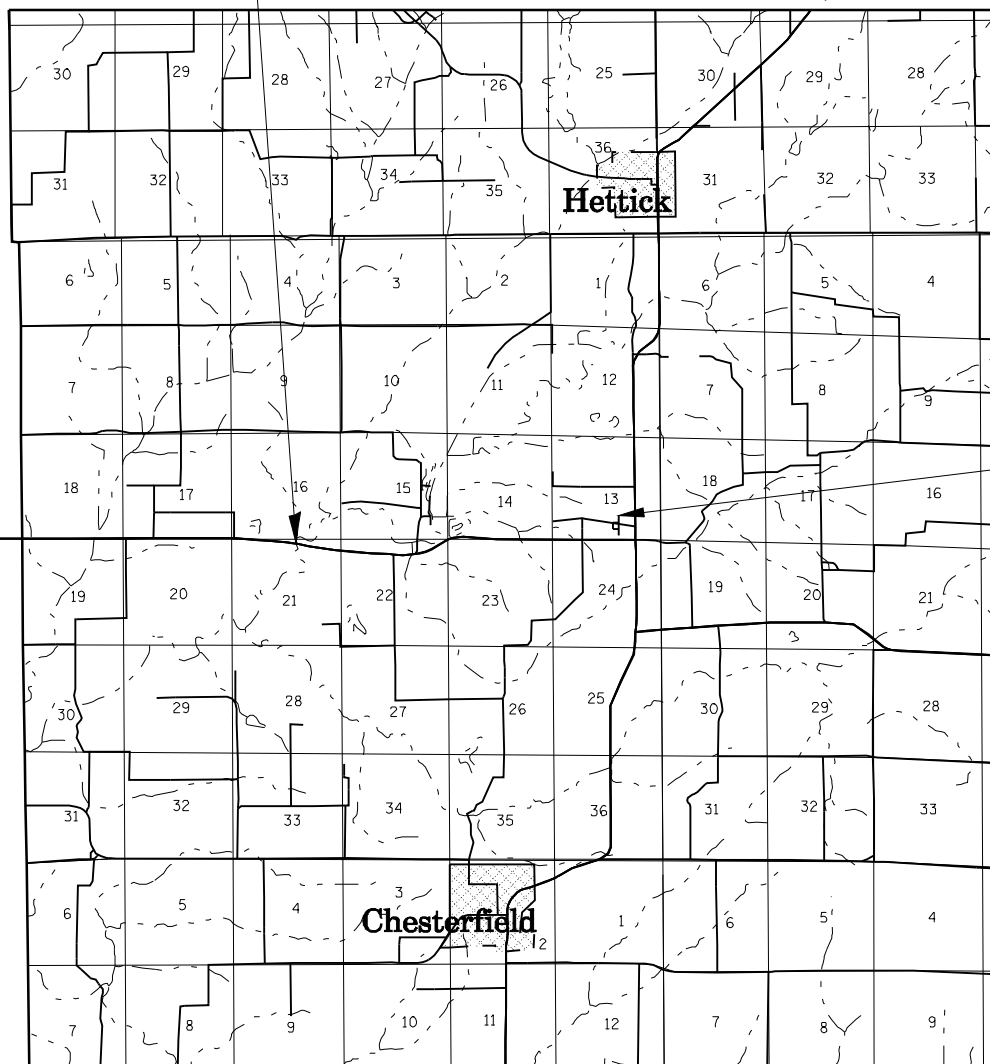
THIS SHEET FOR INFORMATION ONLY



MAX WIDTH
DETAIL



IL 108 OVER HODGES CREEK



7' Ft. (Min.)



TO CARROLLTON IL 108

7' Ft. (Min.)

GREENE COUNTY
MACOUPIN COUNTY

IL 111

NOTE:

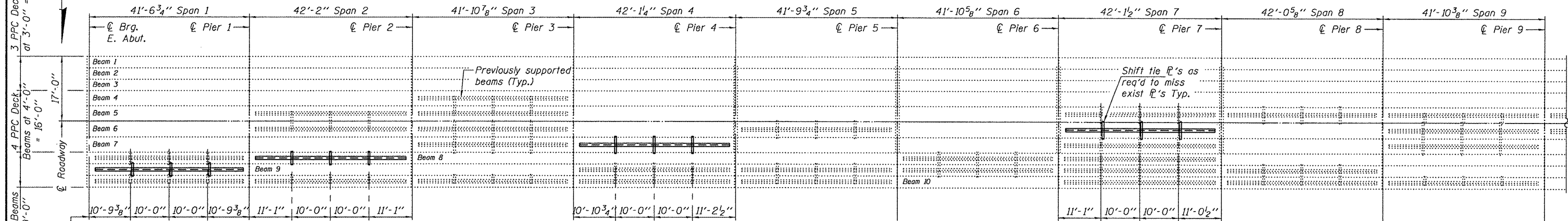
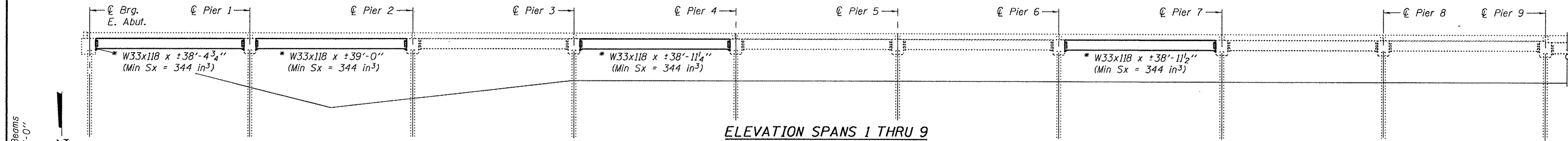
EXISTING MAX WIDTH SIGNS IN PLACE AT THIS TIME AND ARE TO BE LEFT IN PLACE AT THE COMPLETION OF THE PROJECT.

FILE NAME =	USER NAME = laughlinr1	DESIGNED -	REVISED -	STATE OF ILLINOIS DEPARTMENT OF TRANSPORTATION	EXISTING TRAFFIC CONTROL				F.A.P. RTE.	SECTION	COUNTY	TOTAL SHEETS	SHEET NO.	
er\pwork\PWIDOT\LAUGHLINRL\0162470\0672D27-Sht-TrafCtl.dgn		DRAWN -	REVISED -		SCALE:	SHEET NO.	OF SHEETS	STA.	TO STA.	761	107BR-7	MACOUPIN	8	6
		CHECKED -	REVISED -											
		DATE -	REVISED -											
											CONTRACT NO. 72D27			
											ILLINOIS FED. AID PROJECT			

STATE OF ILLINOIS
DEPARTMENT OF TRANSPORTATION

* Contractor is to verify beam length prior to ordering material. Other sections meeting the section modulus requirements shown may be allowed subject to approval by the Bureau of Bridges and Structures. Maximum Girder depth = 36". No additional payment will be allowed if the contractor chooses a heavier steel section than the one specified in the plans

** ϕ Transverse tie ℓ 's (3 per span). Place additional shims at midpoints between tie ℓ 's. Securely weld shims to top flange of support beam. Minimum shim size is 6" x flange width.



** Transverse Tie ℓ 's

GENERAL NOTES

All structural steel shall conform to AASHTO Classification M-270 Gr. 36, unless otherwise noted.

Plan dimensions and details relative to existing plans are subject to nominal construction variations. The Contractor shall field verify existing dimensions and details affecting new construction and make necessary approved adjustments prior to construction or ordering of materials. Such variations shall not be cause for additional compensation for a change in scope of the work, however, the Contractor will be paid for the quantity actually furnished at the unit price bid for the work.

The contractor is advised that the existing PPC Deck Beams are in a deteriorated condition with reduced load carrying capacity. It is the contractor's responsibility to account for the condition of the beams when developing construction procedures.

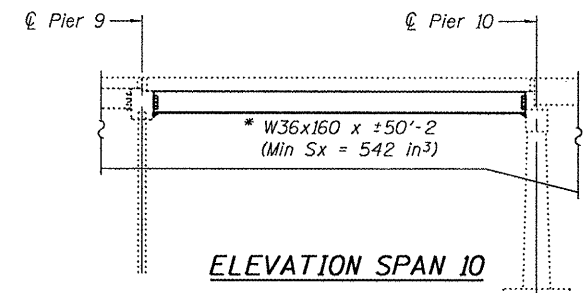
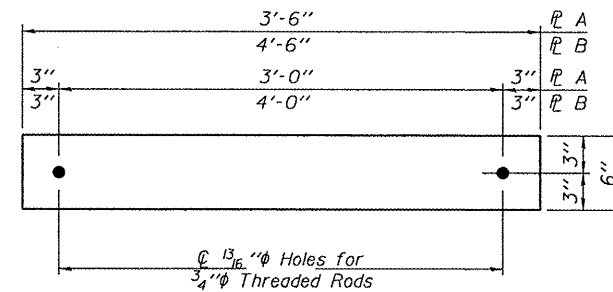
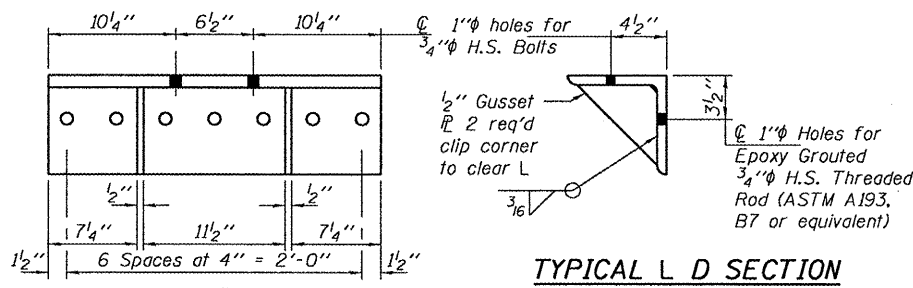
See Section 584 of the Standard Specifications for Epoxy Grouting of Threaded Rods; Minimum embedment 9".

If the contractor's procedure for placement of beams involves placement of cranes or other heavy equipment on the bridge, a detailed procedure shall be submitted to the Engineer for approval. The procedure shall include calculations, prepared and sealed by an Illinois Licensed Structural Engineer, verifying that the equipment and procedure used will not overstress the existing beams. To distribute load to multiple beams and protect the existing surface, in all cases a double layer mat of heavy timbers shall be used at all times under crane tracks or wheels and any outriggers in the down position. If necessary, shims shall be used under the crane mat to ensure uniform contact with the underlying beams.

The cost of epoxy grouting threaded rods shall be included with Furnishing and Erecting Structural Steel.

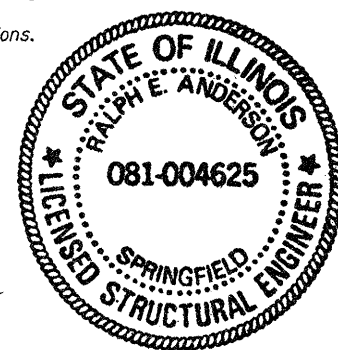
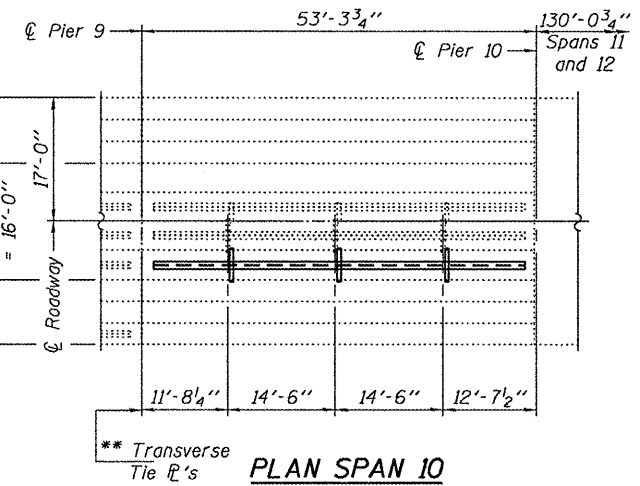
The Contractor has the option of using used steel. See Special Provisions.

The cost of riprap relocation required to attach support beams to abutment face shall be included with Furnishing and Erecting Structural Steel.



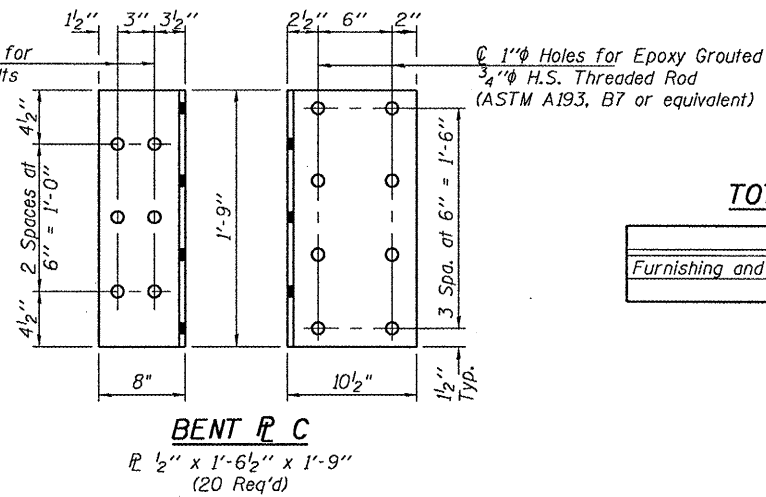
TOTAL BILL OF MATERIAL

ITEM	UNIT	QUANTITY
Furnishing and Erecting Structural Steel	Pound	29,530



DESIGNED: [Signature]
CHECKED: Victor H. Veliz
DRAWN: Kyle M. Steffen
CHECKED: [Signature]

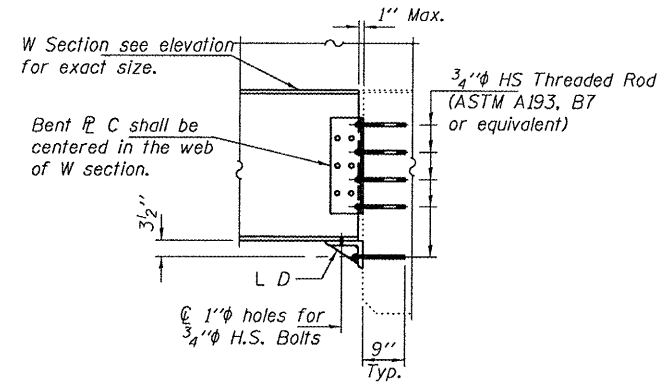
OCTOBER 29, 2009
EXAMINED: [Signature]
PASSED: [Signature]



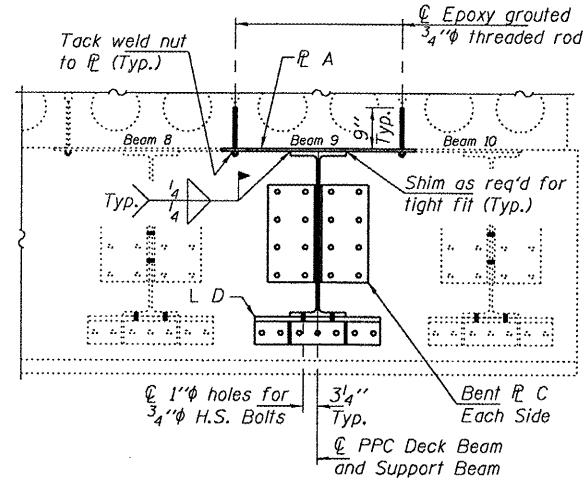
SHEET NO. 1 2 SHEETS	F.A.P. RTE.	SECTION	COUNTY	TOTAL SHEETS	SHEET NO.
	761	107BR-7	MACOUPIN	8	7
FED. ROAD DIST. NO.			ILLINOIS FED. AID PROJECT		
CONTRACT NO. 72D27					

Expires: November 30, 2010

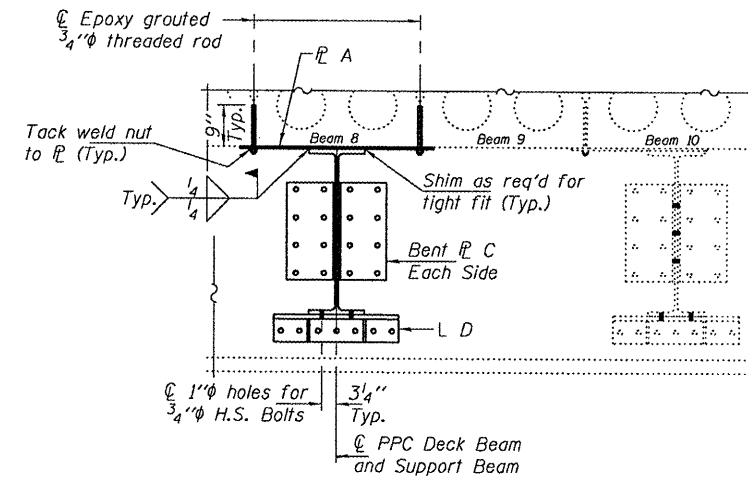
STATE OF ILLINOIS
DEPARTMENT OF TRANSPORTATION



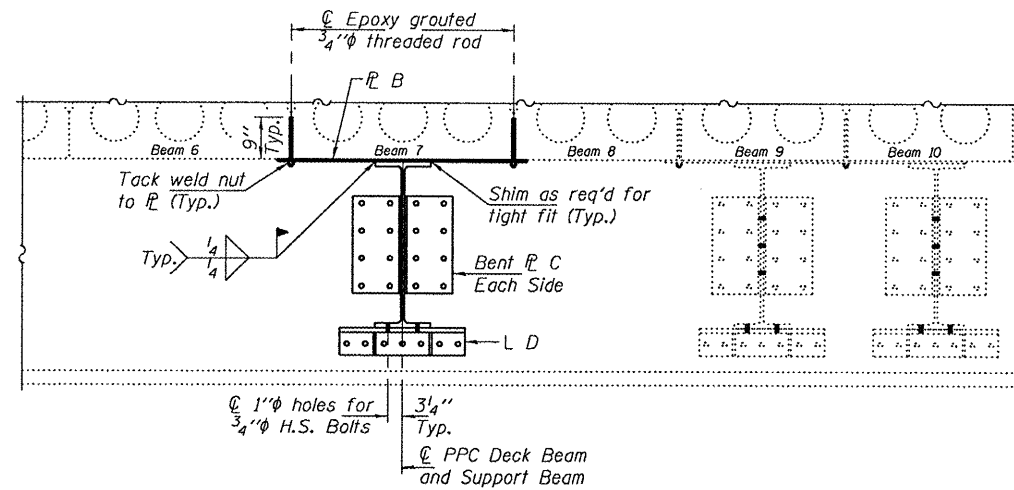
TYPICAL CONNECTION SECTION



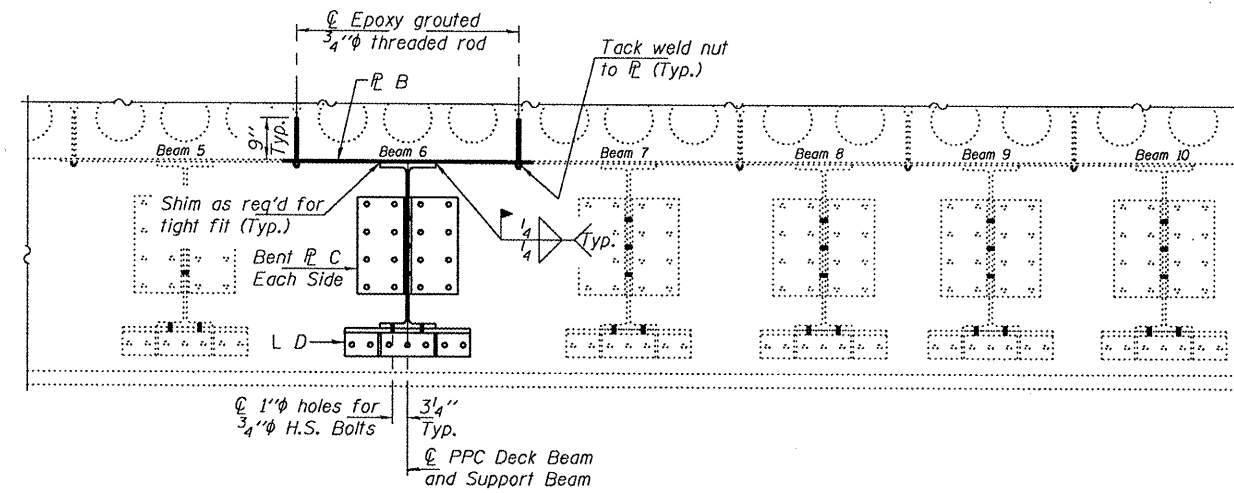
PARTIAL SPAN 1 CROSS SECTION
(Looking West)



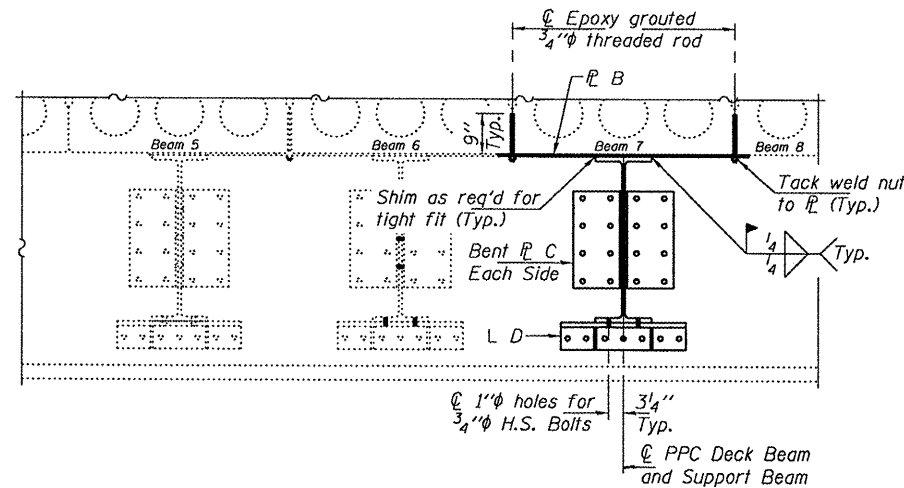
PARTIAL SPAN 2 CROSS SECTION
(Looking West)



PARTIAL SPAN 4 CROSS SECTION
(Looking West)



PARTIAL SPAN 7 CROSS SECTION
(Looking West)



PARTIAL SPAN 10 CROSS SECTION
(Looking West)

DESIGNED	DAB
CHECKED	VHV
DRAWN	Kyle M. Steffen
CHECKED	DAB VHV

OCTOBER 29, 2009
 EXAMINED *Carl Hoyer*
 ENGINEER OF STRUCTURAL SERVICES
 PASSED *Ralph E. Anderson*
 ENGINEER OF BRIDGES AND STRUCTURES

DECK CROSS SECTIONS
SN 059-0034

SHEET NO. 2 2 SHEETS	F.A.P. RTE.	SECTION	COUNTY	TOTAL SHEETS	SHEET NO.
	761	107BR-7	MACOUPIN	8	8
FED. ROAD DIST. NO.			ILLINOIS FED. AID PROJECT		
CONTRACT NO. 72D27					