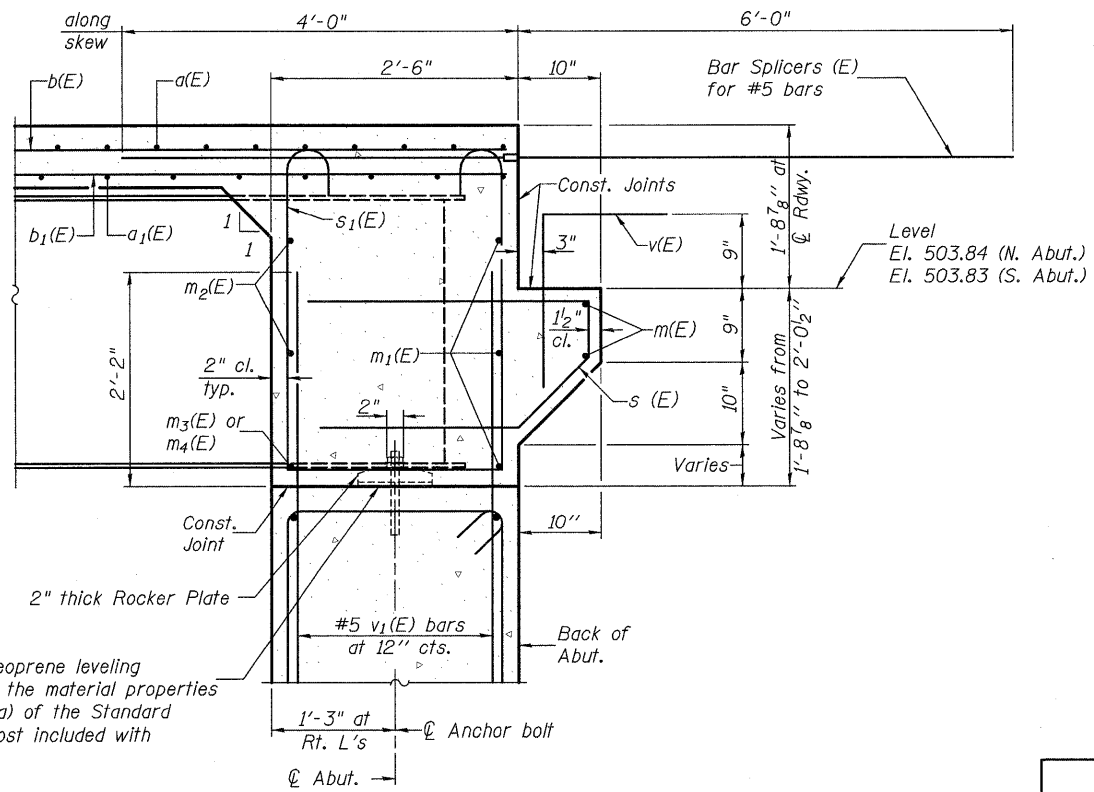


DIAPHRAGM ELEVATION AT NORTH ABUTMENT
(Looking North)

Notes:
 Reinforcement bars in diaphragm are billed with superstructure on sheet 11 of 21.
 Concrete in diaphragm is included with Concrete Superstructure on sheet 11 of 21.
 For details of bars s(E) & s₁(E) see sheet 11 of 21.
 The s(E) and s₁(E) bars shall be placed parallel to the beams. Spacing for these bars shall be at right angles to the beams.

MIN. BAR LAP
 #6 bar = 2'-7"



SECTION A-A

Dimensions at right angles to abutment, except as shown.

DESIGNED	B.G.H.
CHECKED	L.D.G.
DRAWN	K.H.L.
CHECKED	B.G.H.

INTEGRAL ABUTMENT DIAPHRAGM DETAILS

SHEET NO. 12	F.A.P. RTE.	SECTION	COUNTY	TOTAL SHEETS	SHEET NO.
	328	(4BR-1)B	CLAY	42	30
21 SHEETS	S.N. 013-0039		CONTRACT NO. 74310		
FED. ROAD DIST. NO.		ILLINOIS	FED. AID PROJECT		