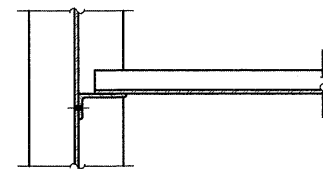
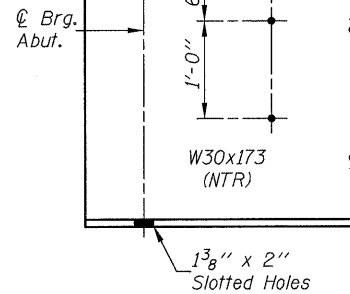
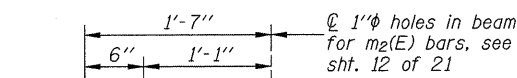


DIAPHRAGM D
(18 Required)

* Alternate channel C12x30 is permitted to facilitate material acquisition. Calculated weight of structural steel is based on the lighter section.

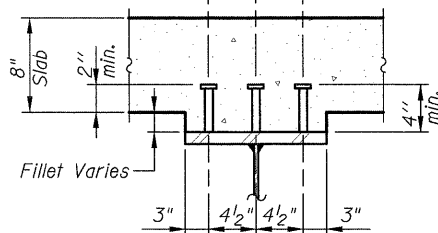


SECTION B-B

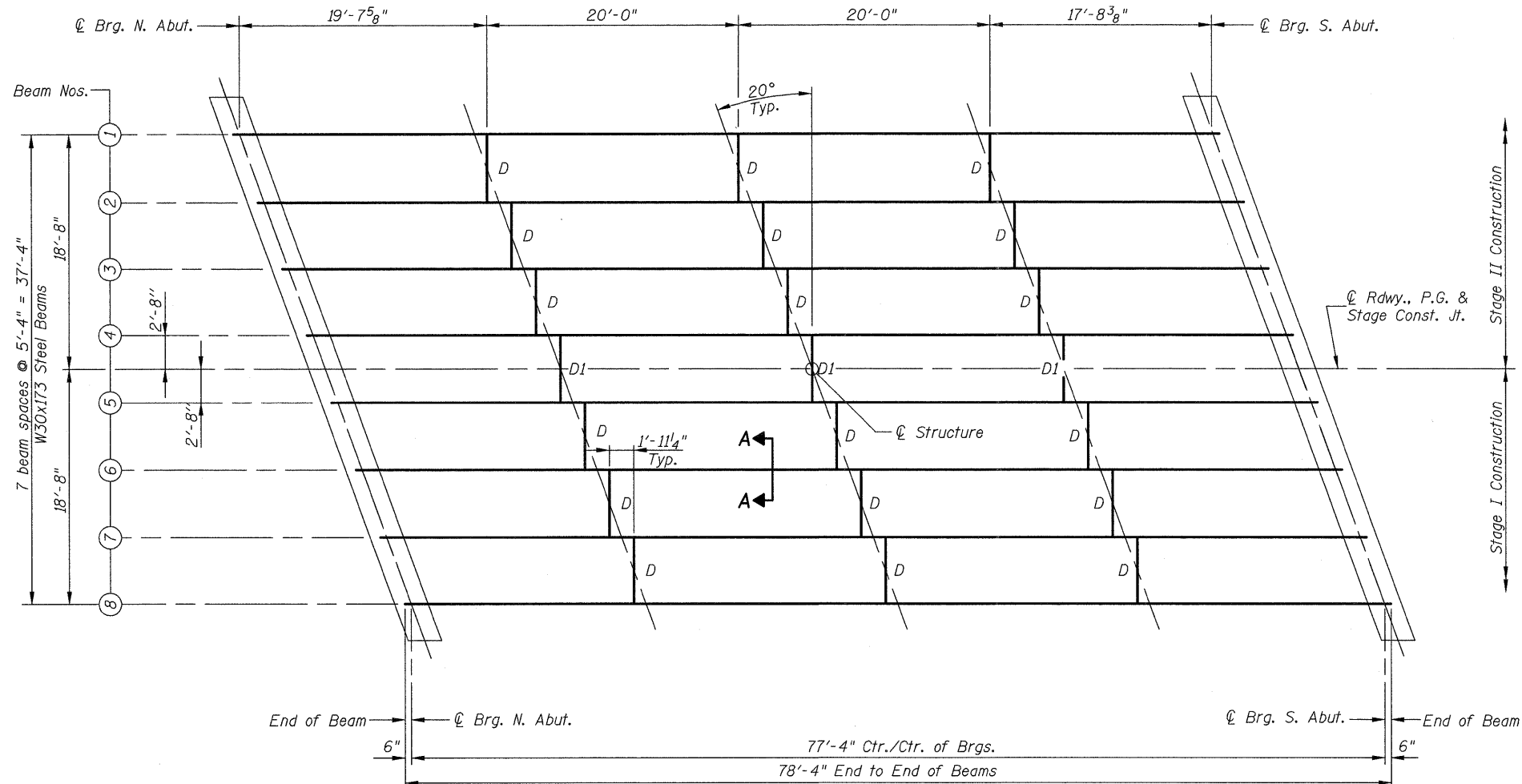


TYP. END OF BEAM ELEVATION

3/4" Granular or solid flux filled headed studs automatically end welded to flange.
(No. Req'd. = 2,256)

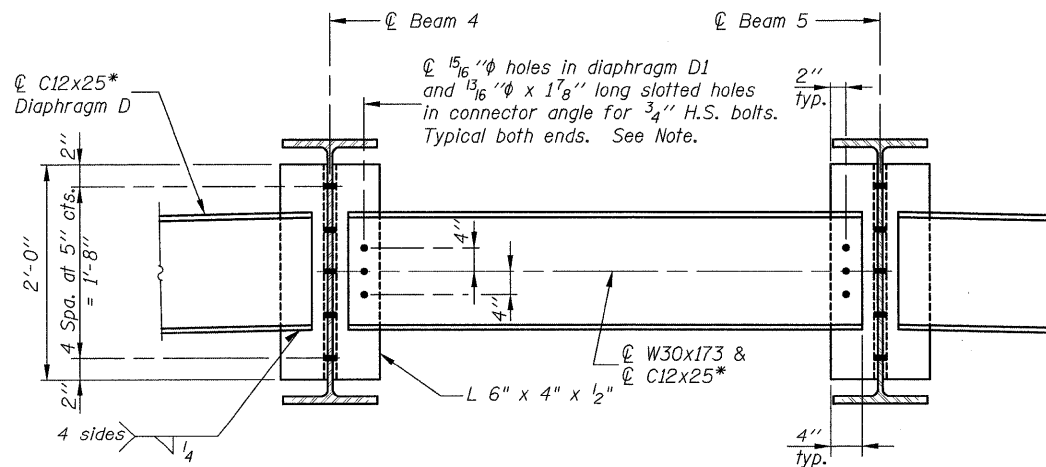


SECTION A-A



FRAMING PLAN ← N

All Beams are W30x173 (NTR) and AASHTO M270, Gr. 50.



DIAPHRAGM D1
(3 Required)

Notes:

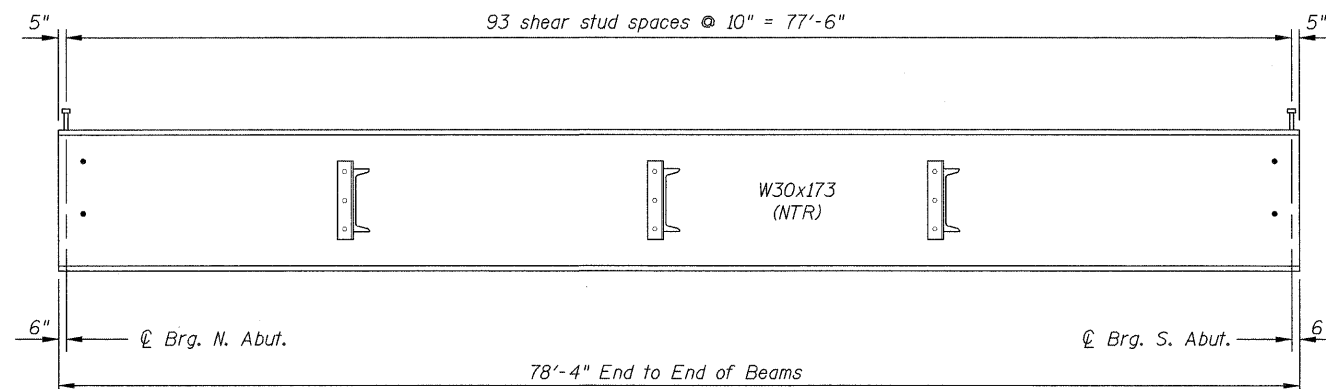
Two hardened washers required for each set of oversized holes.

All cross frames or diaphragms between beams or girders shall be installed with erection pins and bolts in accordance with the erection plan approved by the Engineer. Individual cross frames or diaphragms at supports may be temporarily disconnected to install bearing anchor rods.

Load carrying components designated "NTR" shall conform to the Supplemental Requirements for Notch Toughness, Zone 2.

All diaphragms and connecting angles shall conform to the requirements of AASHTO M270, Gr. 50.

Bolts in slots shall be finger tight until the second stage pour is complete. Position slots so bolts start at one end with no concrete load and finish near the opposite end under deck load allowing maximum displacement without laterally stressing main members. All holes shall have appropriate hardened or plate washers.



BEAM ELEVATION

DESIGNED	B.G.H.
CHECKED	L.D.G.
DRAWN	K.H.L.
CHECKED	B.G.H.

STRUCTURAL STEEL

SHEET NO. 15	F.A.P. RTE.	SECTION	COUNTY	TOTAL SHEETS	SHEET NO.
	328	(4BR-1)B	CLAY	42	33
21 SHEETS	S.N. 013-0039		CONTRACT NO. 74310		
	FED. ROAD DIST. NO.	ILLINOIS	FED. AID PROJECT		