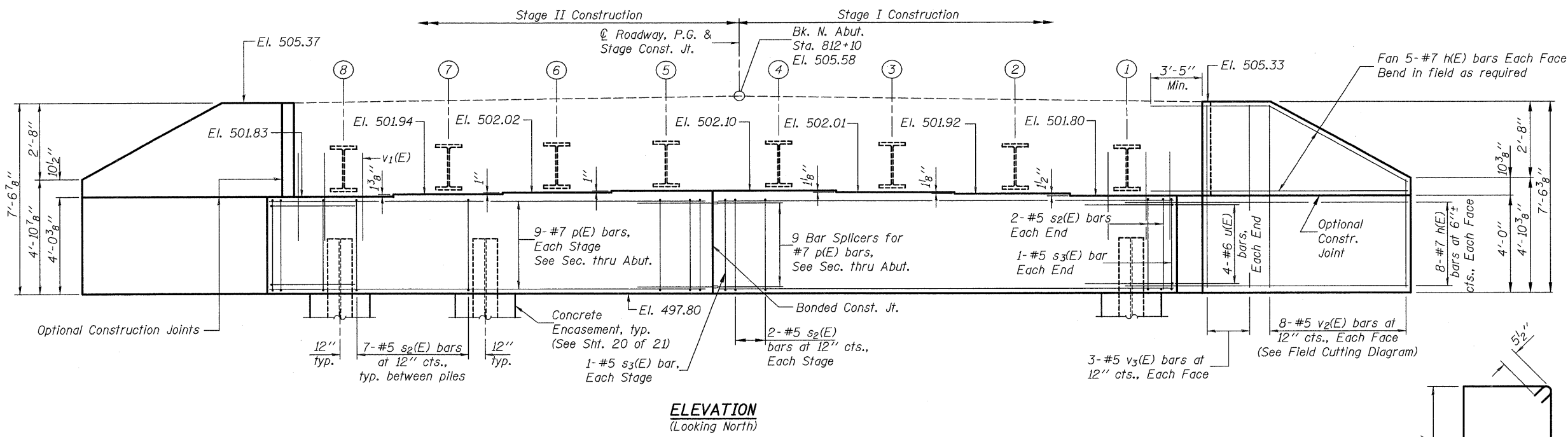
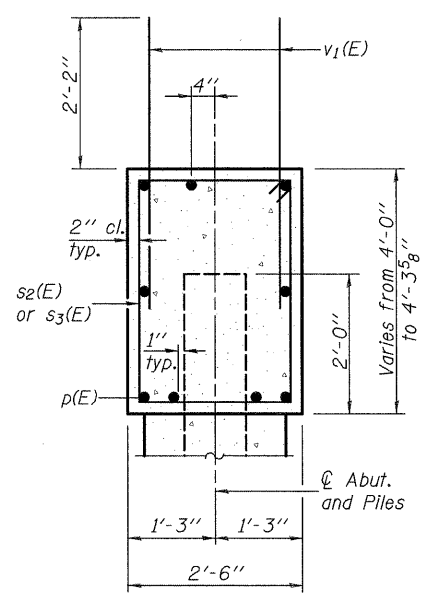


0130039-74310-JT-WABT.DGN MAY 26, 2009

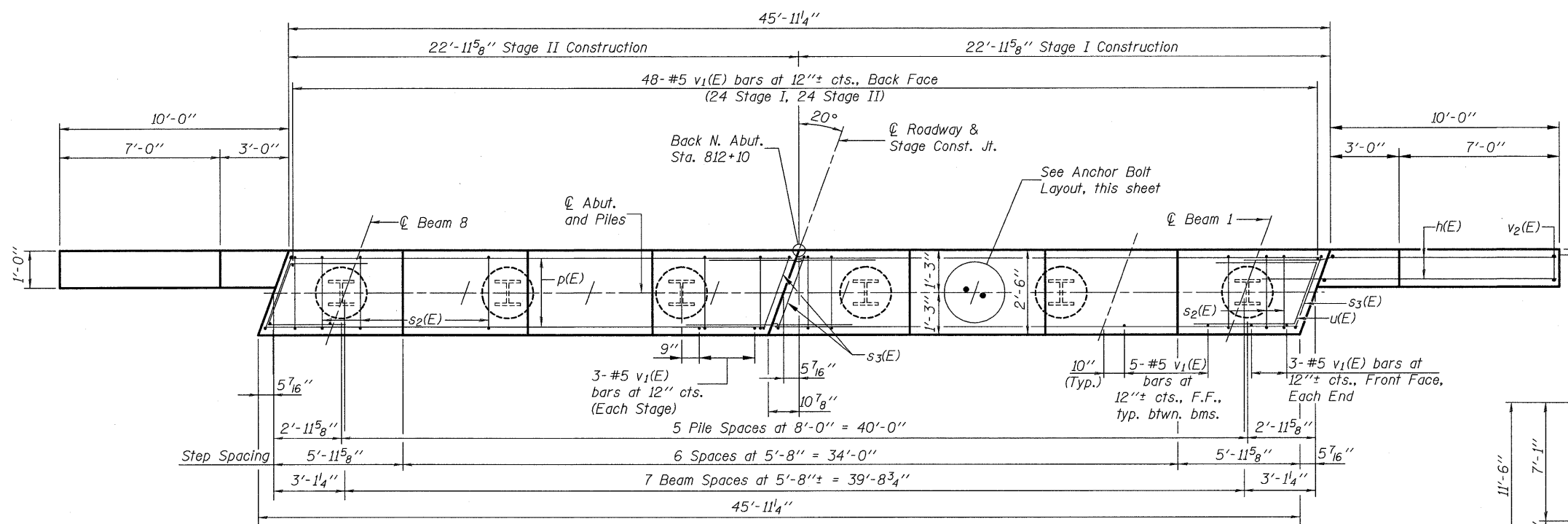
Note: Four steps monolithically with cap.



ELEVATION
(Looking North)

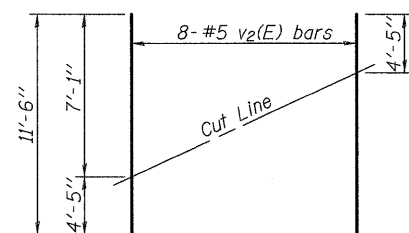


SEC. THRU ABUT.



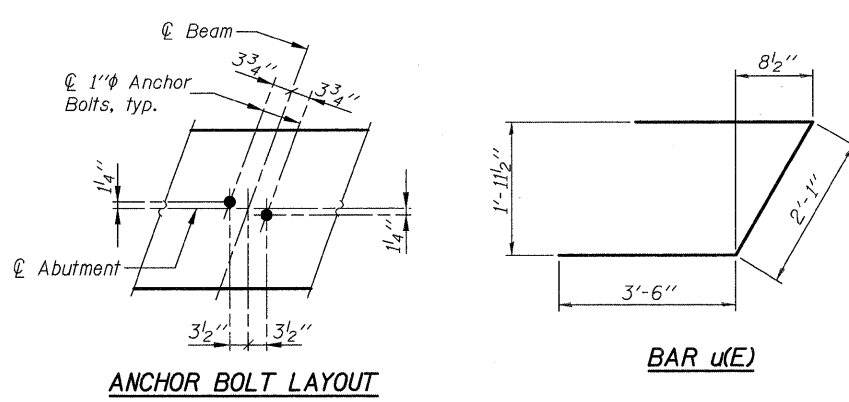
PLAN

BARS s2(E) & s3(E)



FIELD CUTTING DIAGRAM

Order v2(E) full length. Cut as shown and use remainder of bars in opposite face.



ANCHOR BOLT LAYOUT

BILL OF MATERIAL

Bar	No.	Size	Length	Shape
h(E)	52	#7	14'-3"	
p(E)	18	#7	22'-7"	
s2(E)	36	#5	12'-7"	□
s3(E)	4	#5	12'-9"	□
u(E)	8	#6	9'-1"	∟
v1(E)	90	#5	4'-4"	—
v2(E)	16	#5	11'-6"	—
v3(E)	12	#5	7'-1"	—
Structure Excavation		Cu. Yd.	114	
Concrete Structures		Cu. Yd.	22.5	
Reinforcement Bars, Epoxy Coated		Pound	3,670	
Furnishing Steel Piles HP 12x74		Foot	126	
Concrete Encasement		Cu. Yd.	2.1	
Setting Piles in Rock		Each	6	

For details of Bar Splicers see sheet 19 of 21.
For details of piles and Concrete Encasement see sheet 20 of 21.

PILE DATA

Type: HP 12x74
Nominal Required Bearing: 589 kips
Factored Resistance Available: 294 kips
Est. Length: 21 feet
No. Production Piles: 6
No. Test Piles: 0

DESIGNED	B.G.H.
CHECKED	L.D.G.
DRAWN	K.H.L.
CHECKED	B.G.H.

NORTH ABUTMENT

SHEET NO. 17	F.A.P. RTE.	SECTION	COUNTY	TOTAL SHEETS	SHEET NO.
	328	(4BR-1)B	CLAY	42	35
21 SHEETS	S.N. 013-0039		CONTRACT NO. 74310		
FED. ROAD DIST. NO. _		ILLINOIS	FED. AID PROJECT		

H.M.G. NO. 4915.19